

Spinney Memorial Library

Onset Village
Wareham, Massachusetts

Architecture

Interiors

Engineering



Basement Plan

Library & Community Services

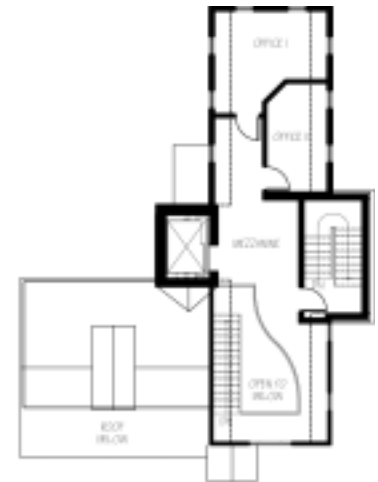
- > Public Internet Access
- > Reading Room
- > Meeting Space
- > Children's Activities
- > Satellite Town Services

- > This project supported in part by Wareham Community Preservation Act funds

- > A project of Friends of the Wareham Free Library, a 501(c)(3) tax-exempt organization



First Floor Plan



Mezzanine Plan

Located in the heart of Onset Village, the proposed branch library will be created from the renovation and addition to the existing Spinney Memorial Building.

Basic library service and outreach activities will be available to both the residents of Onset and East Wareham and summer visitors through the renovation and addition to this historically significant building on Onset Avenue. An important landmark in the village, the building will undergo a needed physical and historical renovation with two new wings and a new basement to accommodate library and community services.

When completed, the facility will be fully handicapped accessible, open to the community, and retain the historic and charming character of the jewel, Onset Village.

*Donations may be sent to
Spinney Memorial Library Fund
P.O. Box 868, Onset, MA 02558
www.wareham.ma.us*