

MINUTES OF MEETING OF THE BOARD OF SELECTMEN

Date of Meeting: November 9, 2021
Date of Transcription: November 29, 2021
Transcribed by: Cassandra Slaney

1. CALL MEETING TO ORDER BY CHAIRMAN

Remote meeting due to COVID 19

2. ROLL CALL

Selectmen Present: Judith Whiteside, Chairman
Patrick G. Tropeano, Clerk
James M. Munise
Alan H. Slavin
Peter W. Teitelbaum, Esq.

Also Present: Rich Bowen, Town Counsel
Derek Sullivan, Town Administrator

3. PLEDGE OF ALLEGIANCE

4. ANNOUNCEMENTS

GATRA will be displaying recently purchased electric busses on Saturday, November 20th at 1:00 p.m. on Oak Street in Taunton.

Smithers has passed all cannabis regulations and should be fully operational by February 2022.

The VFW in Onset is holding a Veterans Day celebration on Thursday, November 11th starting at 11:00 a.m.

The Wareham Tigers have three playoff games at Spillane Field on Saturday, November 13th starting at 5:00 p.m.

5. CITIZEN'S COMMENTS

None.

6. BOARD'S COMMENTS

The Cape Cod Commission will be meeting November 15th to go over the final study for the Cape Rail. There are two alternatives that will be discussed.

The WRA will be meeting November 10th and may vote to recommend the Selectmen to endorse the land disposition agreement that has been negotiated with the Bentley Companies.

7. APPOINTMENTS/REAPPOINTMENTS/INTERVIEWS

- a. Wareham Veterans Council
 - i. Jesse Walsh

SELECTMEN MEETING MINUTES-11/9/2021 (CONT'D)

Present before the Board: Jesse Walsh

MOTION: Selectman Slavin moved to appoint Jesse Walsh to the Wareham Veterans Council to a term to expire no later than June 30, 2024. Selectman Teitelbaum seconded. Roll Call: Selectman Slavin-yes, Selectman Tropeano-yes, Selectman Munise-yes, Selectman Teitelbaum-yes, Selectman Whiteside-yes.

VOTE: 5-0-0 (Unanimous)

8. LICENSES AND PERMITS

- a. Application from Wareham Village Association for use of Town roads for the Christmas Parade taking place on Saturday, December 4, 2021 at 3pm.

MOTION: Selectman Tropeano moved to approve the application from Wareham Village Association for use of Town roads for the Annual Christmas Parade taking place Saturday, December 4, 2021 at 3:00 pm. Selectman Slavin seconded. Roll Call: Selectman Slavin-yes, Selectman Tropeano-yes, Selectman Munise-yes, Selectman Teitelbaum-yes, Selectman Whiteside-yes.

VOTE: 5-0-0 (Unanimous)

9. TOWN BUSINESS

- a. Proclamation-Austin Tripp.

Present before the Board: Austin Tripp, JROTC Cadet; Tammy Tripp and Matt Stanton, Director of the Wareham JROTC program.

Selectman Whiteside read the proclamation into record. *(See attached)*

- b. Discussion and possible vote to authorize the placement of signs for Southcoast Health, Tobey Emergency Center and other signage on public ways.

Present before the Board: Ian Trombly-Government Affairs Specialist at Southcoast Health; Phil Oliveira-Vice President of Support Services for Southcoast Health; Tracy McNeil-Executive Director of brand for Southcoast Health; Matt Lauretano-Lauretano Sign Group

A presentation was provided showing the locations of the signage requested. The signs would be emergency signs to provide adequate direction to the emergency department and would be placed around the perimeter of the Tobey Hospital campus.

(See attachment, which shows location of each of the approved signs)

MOTION: Selectman Slavin moved to authorize the placement of signs for Southcoast Health, Tobey Emergency Center on public ways. Selectman Teitelbaum seconded. Roll Call: Selectman Slavin-yes, Selectman Tropeano-yes, Selectman Munise-yes, Selectman Teitelbaum-yes, Selectman Whiteside-yes.

VOTE: 5-0-0 (Unanimous)

- c. Quarterly review of Constable Remittance.

Quarterly remittance was provided to the Board. There was no further discussion.

- d. Discussion and possible vote regarding policy 03-3, class II license holders.
Discussion will include but not be limited to a new license format, and requirements to be printed on license.

Selectman Whiteside explained that the license format on the Class 2 licenses will be revised to include more information such as the vehicle limit and the Map and Lot #s.

Selectman Whiteside also stated Supreme Motor Corp. was licensed for fifty vehicles, but was approved for 117 by the Zoning Board of Appeals in 2017. It was researched and found that the license was approved for 117 by the Board of Selectmen as well, but asked that the Board reconfirm this vehicle limit in order to update the current license.

SELECTMEN MEETING MINUTES-11/9/2021 (CONT'D)

MOTION: Selectman Slavin moved to reconfirm the approval of a limit of 117 vehicles for Supreme Motor Corp, 2371 Cranberry Hwy, W. Wareham. Selectman Tropeano seconded. Roll Call: Selectman Slavin-yes, Selectman Tropeano-yes, Selectman Munise-yes, Selectman Teitelbaum-yes, Selectman Whiteside-yes.

VOTE: 5-0-0 (Unanimous)

10. TOWN ADMINISTRATOR'S REPORT

Mr. Sullivan stated that the new elementary school is 99% complete and suggested the BOS take formal action to accept it and turn it over to the school department.

Unpaid trash bills will be added to the tax bills in December. If trash service has been received, but payment has not been made, citizens are asked to contact the Collector's office.

Mr. Sullivan wanted to thank all who were involved in getting the \$45,000.00 Community Compact grant for an urban renewal plan for downtown Wareham.

11. LIAISON REPORTS/INITIATIVE REPORTS

The House and Senate have not finalized the ARPA funds.

12. CONSENT AGENDA

- a. Authorization to sign bills and documents, etc.
- b. Approval of meeting minutes: October 25, 2021.

MOTION: Selectman Tropeano moved to approve the meeting minutes of October 25, 2021. Selectman Slavin seconded. Roll Call: Selectman Slavin-yes, Selectman Teitelbaum-yes, Selectman Tropeano-yes, Selectman Munise-yes, Selectman Whiteside-yes.

VOTE: 5-0-0 (Unanimous)

13. SIGNING OF DOCUMENTS APPROVED BY THE BOARD

14. EXECUTIVE SESSION

MOTION: Selectman Tropeano moved to enter executive session at 8:21 p.m. for M.G.L. 30A §21 (6) Re: Little Harbor-purchase of property To consider the purchase, exchange, lease of value of real property if the chair declares that an open meeting may have a detrimental effect on the negotiating position of the public body. Selectman Slavin seconded. Roll Call: Selectman Slavin-yes, Selectman Teitelbaum-yes, Selectman Tropeano-yes, Selectman Munise-yes, Selectman Whiteside-yes.

VOTE: 5-0-0 (Unanimous)

15. ADJOURNMENT

MOTION: Selectman Teitelbaum moved to exit executive session. Selectman Slavin seconded. Roll call: Selectman Slavin-yes, Selectman Teitelbaum-yes, Selectman Munise-yes, Selectman Whiteside-yes.

VOTE: 5-0-0 (Unanimous)

MOTION: Selectman Slavin moved to adjourn the meeting at 8:33 p.m. Selectman Teitelbaum seconded. Roll call: Selectman Slavin-yes, Selectman Teitelbaum-yes, Selectman Munise-yes, Selectman Whiteside-yes.

VOTE: 5-0-0 (Unanimous)

SELECTMEN MEETING MINUTES-11/9/2021 (CONT'D)

Respectfully submitted
Cassandra Slaney
Department Assistant

The foregoing minutes were submitted to the Board of Selectmen on:

Attest:  Date Signed: 1-27-22
Patrick G. Tropeano, Clerk

Documents reviewed and/or used in meeting.

1. Appointment for Jesse Walsh.
2. Application and supporting documents from Wareham Village Association for use of Town roads for the annual Christmas Parade.
3. Proclamation for Austin Tripp.
4. Tobey Emergency Center sign request documentation.
5. Constable remittance.
6. Meeting minutes for October 25, 2021.

Date sent to Town Clerk: 1-27-22

THE BOARD OF SELECTMEN



Wareham, Massachusetts

Awards This

Certificate of Recognition

To

AUSTIN TRIPP-CADET LIEUTENANT COLONEL

This national JROTC award is being presented to Cadet Lieutenant Colonel Austin Tripp, an exceptional student and the JROTC Cadet Battalion Commander at Wareham High School. The award represents countless hours of service to his community, excellence in academics, and demonstrated exceptional leadership which define his character. The award is the Legion of Valor with Bronze Cross for Achievement and is given to a select group of young men and women across the nation. This is the 2nd year in a row that a Wareham High Student has achieved this honor. Austin is the only JROTC Cadet in Massachusetts to receive this honor this year.

The Legion of Valor organization is composed of veterans who have distinguished themselves by earning either the Medal of Honor or their respective service's highest award for gallantry — the Navy Cross, Army Distinguished Service Cross or Air Force Cross. This award is open to all high school JROTC and college ROTC Cadets. The Legion of Valor - Bronze Cross is awarded to JROTC cadets who demonstrate outstanding performance, dependability and good character, adherence to military discipline, and leadership ability. The criteria for this award make it exceptionally difficult to earn as only the most dedicated cadets are chosen. Austin was one of 33 JROTC cadets selected nationally this year from over 3,390 JROTC programs with over 553,000 cadets from around the world.

It is with great pleasure and humility that the Board of Selectmen award our certificate of appreciation to Austin Tripp.

Presented this 9th day of November, 2021.

WAREHAM BOARD OF SELECTMEN

Judith Whiteside, Chair

Patrick G. Tropeano, Clerk

James M. Munise

Alan H. Slavin

Peter W. Teitelbaum, Esq.

Good afternoon Derek,

I hope all is well! The Tobey Emergency Center is coming along nicely, and we are now preparing to install new signage around the Tobey campus, directing drivers to the new Emergency Center. This is my first time going through this process in Wareham, so any guidance is greatly appreciated.

Below is a list of our suggested sign locations. With your permission, our team will purchase and install the signs. They will all be 18"x24" with arrows directing drivers in the correct direction. When possible, we also suggested using existing poles to avoid unnecessary digging. It appears the only support we'll need is the removal of bushes and brush on the South-East Corner of High St. and Center St. (sign 6). I have listed the ten signs we plan to install that correspond with the attached document.

The Southern corner of Center St. & Main St.

- a. Directing drivers heading South-East on Main St. to continue straight on Main St.
- b. Existing pole to be used (street light)

The Southern corner of Cedar St. and Main St.

- a. Directing Drivers heading east on Cedar St. to turn left onto Main St.
- b. Existing Pole (Cedar St. Sign)

The Northern Corner of High St. and Cedar St.

- a. Directing Drivers heading South on High St. to turn left onto Cedar St.
- b. Existing Pole (High St Sign)

On the East side of High St. at the Tobey Maine Entrance

- a. Directing Drivers heading South on High to continue South
- b. New Pole to be installed

On the East side of High St. at the Tobey Maine Entrance

- a. Directing Drivers heading North on High St. to continue North
- b. New Pole to be installed

The South-East corner of High St & Center St. (In front of the Tobey Hall Community Building)

- a. Directing Drivers heading North on High St. to turn right at Center St.
- b. Directing drivers heading South on High St. to turn left at Center St.
- c. The brush will need to be cleared in order to install the sign
- d. New pole to be installed

(Removed)

On the East side of High St. (Across the St. from 62 High St.)

- a. Directing Drivers heading North on High St. to continue North
- b. New pole to be installed

On the East Side of High St. (Across the St. from 18 High St.)

- a. Directing Drivers heading South on High St. to remain straight
- b. New pole to be installed

The East side of Main St. (across from the Kendrick Lot)

- a. Directing drivers heading North on Main to continue straight
- b. Existing pole with no sign currently on it.

The West corner Main St. and Sandwich Rd.

- a. Directing drivers heading west on Sandwich Rd to turn right onto Main St.
- b. Existing pole to be used
- c. Removal of all other existing hospital signs

Please let me know if you have any questions or concerns, and I look forward to hearing from you regarding next steps.

Thanks!

Ian A. Trombly | Government Affairs Specialist
External Affairs & Government Affairs
Southcoast Health | 101 Page Street | New Bedford, MA 02740
phone: 508-971-9407 | fax: 508-973-5511
Tromblyi@southcoast.org | www.southcoast.org
[facebook](#) | [instagram](#) | [linkedin](#) | [twitter](#)



More than medicine.



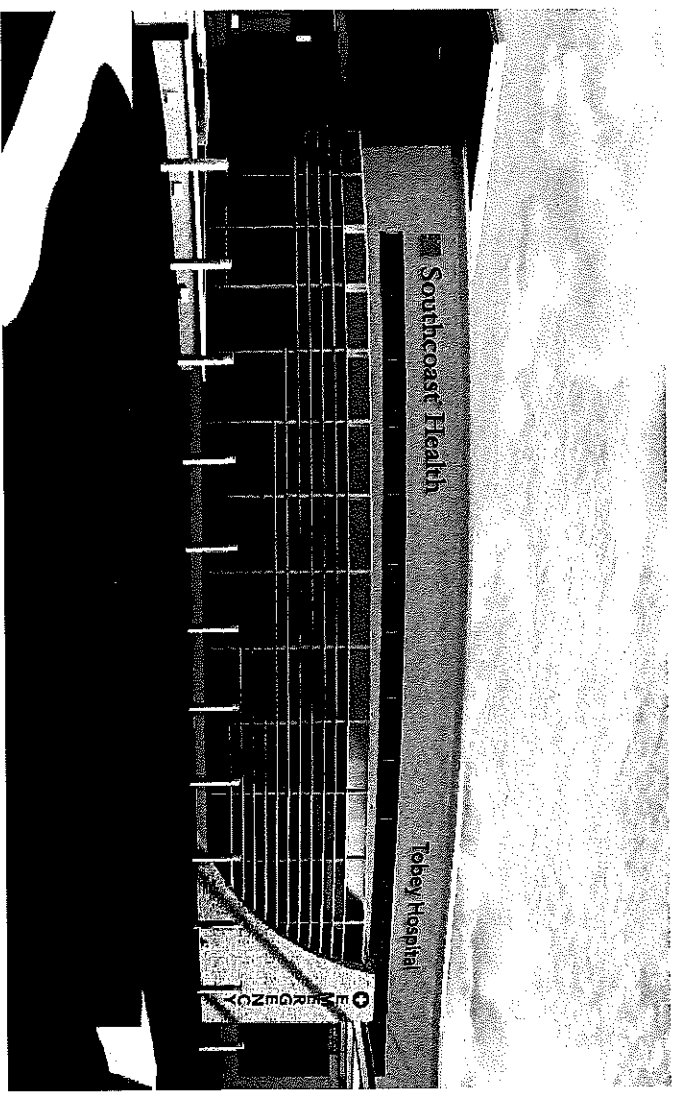
Southcoast Hospitals Group, which includes Charlton Memorial Hospital, St. Luke's Hospital and Tobey Hospital, is a 2020 Newsweek's World's Best Hospital.

CONFIDENTIALITY NOTICE: This email (including any attachments) may contain confidential, privileged or otherwise protected information. It is intended for a particular recipient. If you are not the intended recipient, please immediately notify the sender by reply email, delete this email and destroy any copies of the email and its attachments. Any unauthorized use or disclosure of this email and its attachments is strictly prohibited. The recipient has full responsibility for protecting its systems from viruses and other breaches of the system's integrity and Southcoast accepts no liability for any damage caused by any virus transmitted by this email or its attachments.

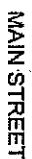


Tobey Hospital

43 High Street, Wareham, MA 02571



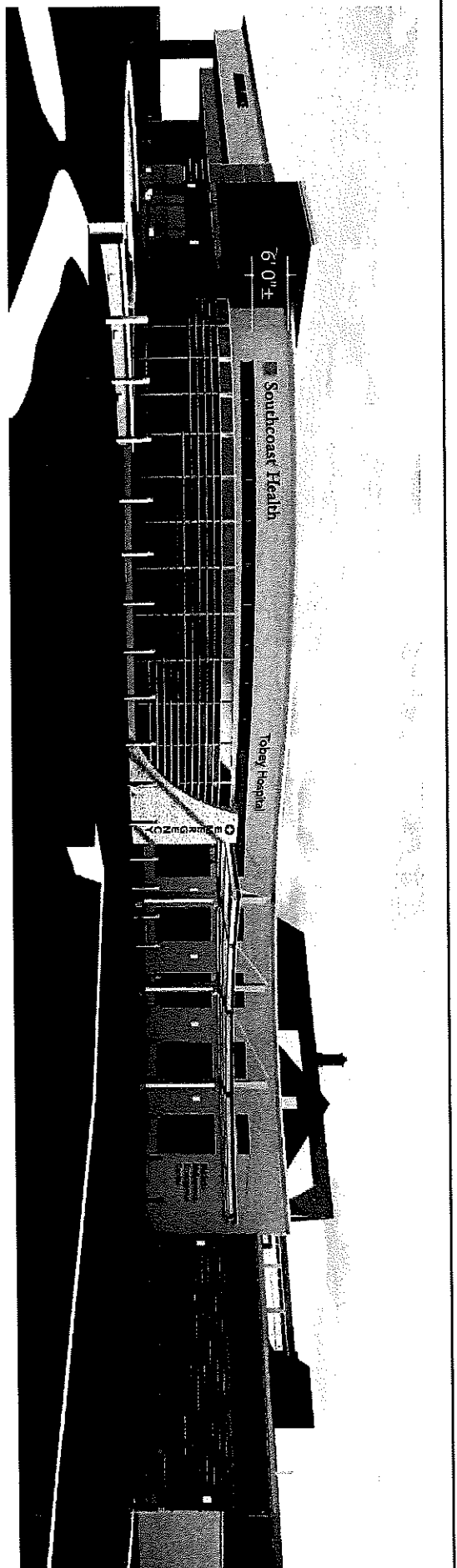
- Door Vinyl Graphics
Print# 4404JK
- ID & Hours Plaque
Print# 4403JK (tbd)
- Building Sign
Print# 4358JK-10
Print# 4339JK-4
Print# 44628JK-2
Print# 1097JK
Print# 1165JK-5
- Directional Sign
Print# 4629JK-3
Print# 1096JK-2
Print# 1098JK-2
Print# 1472JK



(A) Sign Location Plan
Not to Scale

Print	9404JK-5	Date	10/18/21	OG#40841	Line	Line#	SP	MGL	Sign Type	Various
CLIENT APPROVAL										
					Title	Southcoast Healthcare			Location	101 Page Street
					City/State	New Bedford, MA				New Bedford MA 02740
					Customer	Southcoast Healthcare			Description	Site Plan
AUTHORIZED SIGNATURE										
					DATE	Int. Note				
1 of 1	This drawing contains original elements created by Lauretano Sign Group, Inc. and is property of Lauretano Sign Group, Inc. and is subject to all applicable copyright laws. This drawing may not be used in any way until full payment is received by Lauretano Sign Group, Inc. It is intended for review and approval purposes only, and is not to be reproduced, copied, transmitted by electronic means, or exhibited in any fashion to anyone outside your organization without the expressed written consent of Lauretano Sign Group, Inc.									

LAURETANO
SIGN GROUP
1 Tremco Drive, Terryville, CT 06786
phone: 860.582.0233 fax: 860.553.0949
signs@lauretano.com www.lauretano.com



Signage Placement

Print	4398JK-10	Date	10/18/21
CLIENT APPROVAL	ES#	40841	Line 5 SP ML
	Title	Southcoast Health Care	
	City/State	Wareham, MA	
	Customer	Southcoast Health Care	
AUTHORIZED SIGNATURE		DATE	Int Note
<p>1 of 2</p> <p>This drawing contains original elements created by Lauretano Sign Group, Inc., is property of Lauretano Sign Group, Inc., and is subject to all applicable copyright laws. This drawing may not be used in any way until full payment is received by Lauretano Sign Group, Inc. It is intended for review and approval purposes only, and is not to be reproduced, copied, transmitted by electronic media, or exhibited in any fashion to anyone outside your organization without the expressed written consent of Lauretano Sign Group, Inc.</p>		<p>Sign Type 17714.12A-R2-Custom</p> <p>Location As Illustrated</p> <p>Size Refer to Diagram (104.59 sq. ft. Total)</p> <p>Description Trimless Channel Letter</p>	

LAURETANO

S I G N G R O U P

1 Tremco Drive, Terryville, CT 06786
 phone: 860.582.0233 fax: 860.583.0949
 signs@lauretano.com www.lauretano.com

2' 2" 2' 0" 25' 9" 18' 5" 2' 7.8" 2' 0"

Southcoast® Health Tobey Hospital

Scale: 3/16" = 1'

Front View

Southcoast Health: 2' 2" X 25' 9" = 55.79

Tobey Hospital: 2' 7.8" X 18' 5" = 48.80

COLORS / MATERIALS

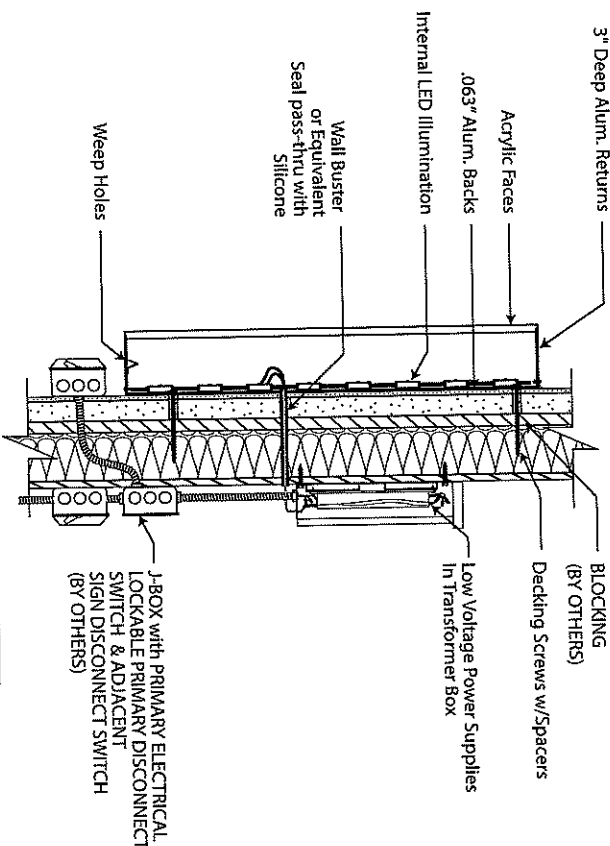
Trimless Channel Letters (Steelart Edgelit 102 or Equivalent):

Logo Face: White Acrylic with 1st Surface Applied 3M 3630-236 Teal Trans. PSV.
 Letter Faces: White Acrylic with 1st Surface Applied 3M 3650-114 with Digitally
 Printed Gray to Match PMS 425C. (Gray Day/White Night)
 Returns: 3" Deep Brushed Aluminum Painted PMS 425C (Satin Finish)
 Backs: .063" Thk. Aluminum Backs.
 Illumination: 6500K "White Prism" Sloan LED Illumination
 Registered Mark: 1/2" White Acrylic with 1st Surface Applied 3M 3650-114 with
 Digitally Printed Gray to Match PMS 425C.

NOTES

Primary Electrical By Others.

Volt: 120 - Power is based off 120 volt.
 If signs use anything other than 120 volt,
 then a difference in price will apply or a step
 down transformer will need to be used.



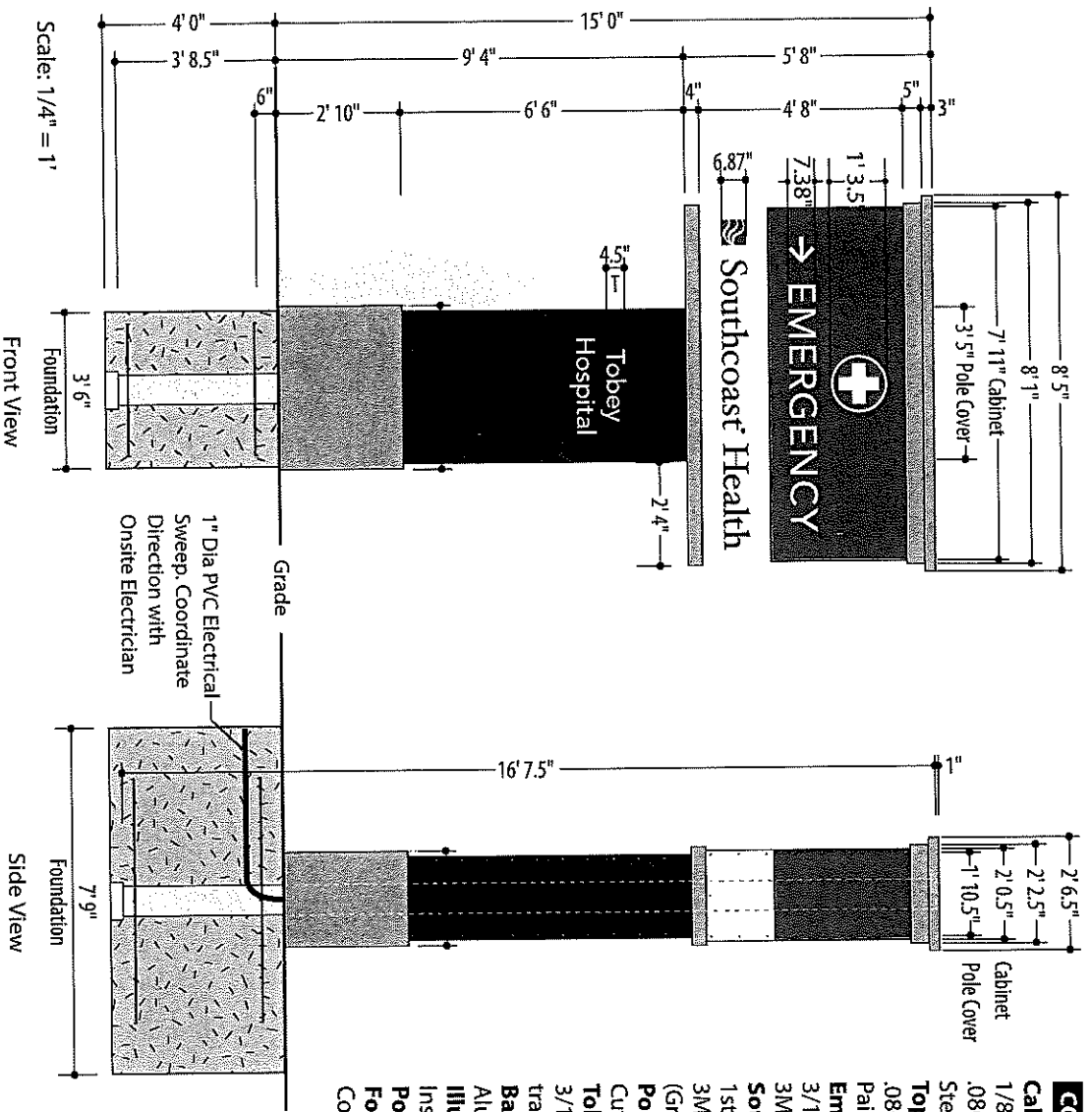
Typical Channel Letter Mounting (NTS)

PROCEED TO PRODUCTION

Print	4398JK-10	Date	10/18/21	Installation Method	
ES#	40841	Line	5	Decking Screws w/Silicone	
G = Critical Dimension for Internal Quality Control				UL FILE NO. E70436	
AUTHORIZED SIGNATURE				Amps	Volts

LAURETANO
 SIGN GROUP

1 Tremco Drive, Terryville, CT 06786 • Phone: 860.582.0233
 signs@lauretno.com www.lauretno.com



COLORS / MATERIALS

Cabinet: Fabricated 1.5" x 1.5" Alum. Angle Frame with 1/8" Thk. Cut-Thru Alum. Faces & .080" Thk. Alum. Removable Returns. Steel Angle for Pole Runners.

Top & Bottom Trim: 3" x 3" x 2" & 4" x 4" Alum. Tube .080" Thk. Aluminum Cladding.

Emergency Band: Cut Thru Graphics backed up with 3/16" Thk. Clear Acrylic. Acrylic to receive 1st surface 3M 3630-20 trans. white PSV & 2nd surface 3M 3635-70 diffusion film.

Southcoast Health: Push-Thru 1/2" Clear Acrylic (1/4" Proud From Face) 1st surface applied 3M 3630-236 Teal Trans. PSV & 3M 3650-114 with Digitally Printed Gray to match PMS 425c (Gray Day/White Night)

Pole Cladding: 1.5" x 1.5" Alum. Angle Frame with 1/8" Thk. Alum. Cut-Thru Face & .080" Thk. Alum. Returns. Paint to match PMS 425c Gray.

Tobey Hospital: Cut-Thru Graphics backed up with 3/16" Thk. Clear Acrylic. Acrylic to receive 1st surface 3M 3630-20 trans. white PSV & 2nd surface 3M 3635-70 diffusion film.

Base Cover: 1.5" x 1.5" Alum. Angle Frame with .063" Thk. Aluminum Cladding. Paint to match PMS Cool Gray 6c.

Illumination: Sloan LED "White Prism" 6500K.

Inside upper cabinet and cladding behind "Tobey Hospital" Copy.

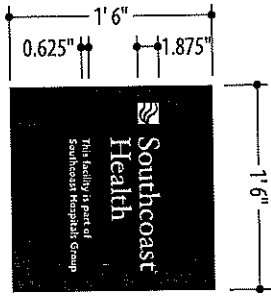
Poles: (1) 8" X 8" X 3/16" Thk. Square Steel Pole.

Footings: (1) 4'-0" Deep X 3'-6" Wide X 7'-9" #3000 Concrete Foundation with #4 Rebar 12" OC Top and Bottom.

Print 4396JK-3	Date 10/18/21	ES# 40841	Line 3	SP ML	Sign Type 17714.18B
CLIENT APPROVAL		Title	Southcoast Health Care		Location As Illustrated
		City/State	Wareham, MA		Size 15' 0" x 8' 5" (126.25 sqft)
		Customer	Southcoast Health Care		Description D/F Internally Illuminated Pylon Sign
AUTHORIZED SIGNATURE		DATE	Int. Note		
<p>1 of 1 This drawing contains original elements created by Lauretano Sign Group, Inc. and is subject to all applicable copyright laws. This drawing may not be used in any way until full payment is received by Lauretano Sign Group, Inc. It is intended for review and approval purposes only, and is not to be reproduced, copied, transmitted by electronic media, or exhibited in any fashion to anyone outside your organization without the expressed written consent of Lauretano Sign Group, Inc.</p>					

LAURETANO
SIGN GROUP

1 Tremco Drive, Terryville, CT 06786
phone: 860.582.0233 fax: 860.583.0949
signs@lauretano.com www.lauretano.com



Scale: 3/4" = 1' Front View



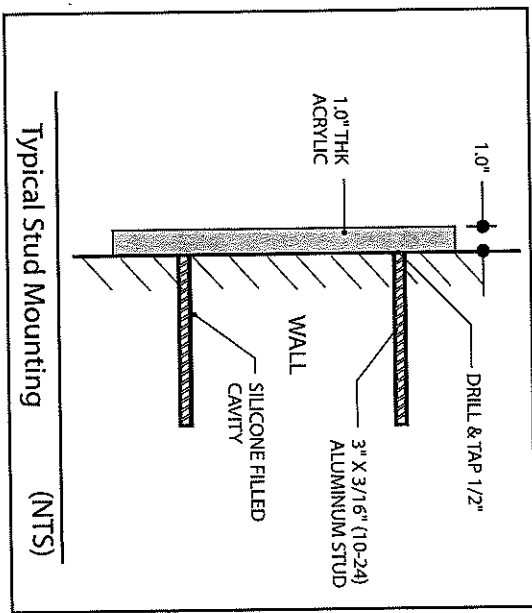
Side View

COLORS / MATERIALS

Face: 1" Deep Acrylic Painted PMS 425C (Satin Finish) Akzo Nobel.
 UV Resistant Satin Clear Coat on All Paint Finishes.
 Graphics: White Opaque 3M 180C-10 Vinyl Applied to 1st Surface
 Mountings: Blind Stud Mount to Wall or Column. Drill Holes in Field and Fill With Adhesive.

NOTES

Please provide location photos



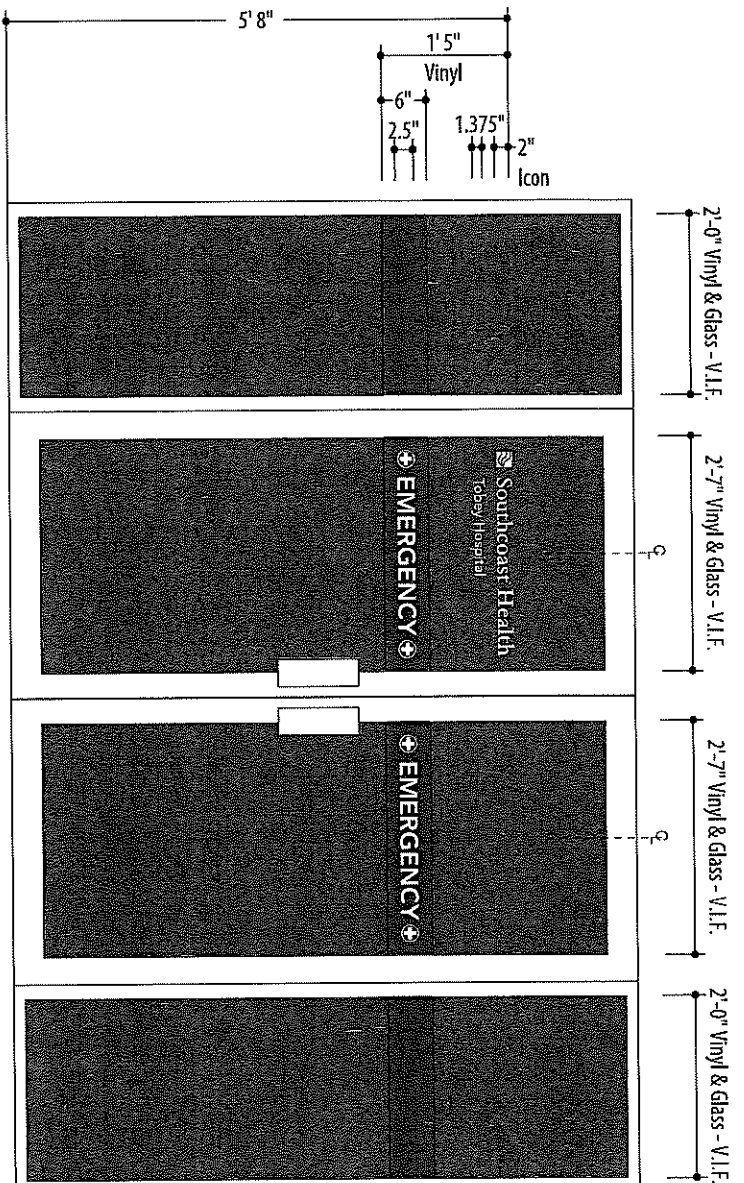
Typical Stud Mounting (NTS)

Print 4403PK	Date 05/24/21	ES# 40841	Line 10	SP ML	Sign Type 17714.10A
CLIENT APPROVAL		Title	Southcoast Health Care		Location As Illustrated
		City/State	New Bedford, MA		Size 1' 6" x 1' 6" (2.25 sqft)
		Customer	Southcoast Health Care		Description Single Face Non Illuminated
AUTHORIZED SIGNATURE		DATE	Int Note		ID Plaque

The drawing contains original elements created by Lauretano Sign Group, Inc. and is subject to all applicable copyright laws. This drawing may not be used in any way until full payment is received by Lauretano Sign Group, Inc. It is intended for review and approval purposes only, and is not to be reproduced, copied, transmitted by electronic media, or exhibited in any fashion to anyone outside your organization without the expressed written consent of Lauretano Sign Group, Inc.

LAURETANO
 SIGN GROUP

1 Tremco Drive, Terryville, CT 06786
 phone: 860.582.0233 fax: 860.583.0949
 signs@lauretano.com www.lauretano.com



Scale: 1/2" = 1'

Front View

SCOPE OF WORK

Install New Single Face Non Illuminated Door Vinyl Graphics.

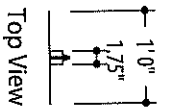
COLORS / MATERIALS

White Opaque Arlon 02 Vinyl and Arlon 2100-73 Poppy Red Vinyl
Applied to 1st Surface to Glass Doors

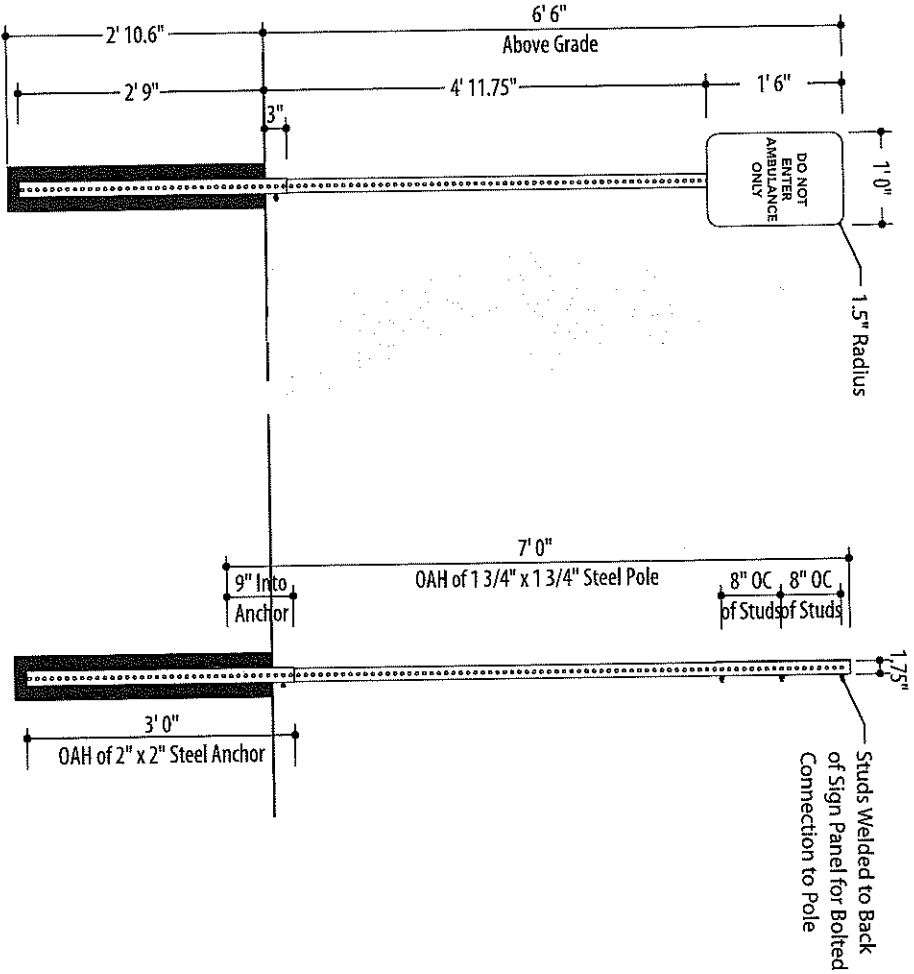
NOTES

Clean Glass Prior to Installation
All Glass Measurements (Height and Width)
Please provide location photos

Print	4404PK	Date	05/24/21	ES#	40841	Line	11	SP	ML	Sign Type	17714.9A-R2
CLIENT APPROVAL											
				Title	Southcoast Health Care				Location	As Illustrated	
				City/State	New Bedford, MA				Size	Various	
				Customer	Southcoast Health Care				Description	Single Face Non Illuminated	
AUTHORIZED SIGNATURE				DATE	Inc. Note						
1 of 1 This drawing contains original elements created by Lauretano Sign Group, Inc., and is subject to all applicable copyright laws. This drawing may not be used in any way until full payment is received by Lauretano Sign Group, Inc. It is intended for review and approval purposes only, and is not to be reproduced, copied, transmitted by electronic media, or exhibited in any fashion to anyone outside your organization without the expressed written consent of Lauretano Sign Group, Inc.											



Top View



Scale: 1/2" = 1' Front View

Side View

COLORS / MATERIALS

Face: .090" Thk. Aluminum Sign Face with 1st surface applied 3M 680-10 White Reflective Vinyl Background.
Copy: Black Opaque Aclon 2100-03 Vinyl Applied to 1st Surface
Pole: Pole to be 1 3/4" X 1 3/4" Galvanized 14 Gauge Square Steel Pole with 7/16" Holes 1" on Center and 7'-0" OAH.
 Pole to be Attached to 2" X 2" Galvanized 12 Gauge Steel Square Anchor with 7/16" Holes 1" on Center and 36" OAH.
 Drive Anchor into Ground/soil Leaving Approx. 3" Exposed.
 Use a Corner Bolt to Secure the Post to the Sleeve through the back of post.

NOTES

Please confirm locations are in landscaping
 Please provide location photos

Print 4400PK Date 05/24/21

ES# 40841 Line 7 SP ML
 Title Southcoast Health Care
 City/State New Bedford, MA
 Customer Southcoast Health Care

Sign Type 17714.1A
 Location As Illustrated
 Size 6' 6" x 1' 0" (1.5 sqft)

Description Single Face Non Illuminated

AUTHORIZED SIGNATURE

DATE

Int. Note

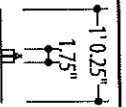
Regulatory Sign

1 of 1

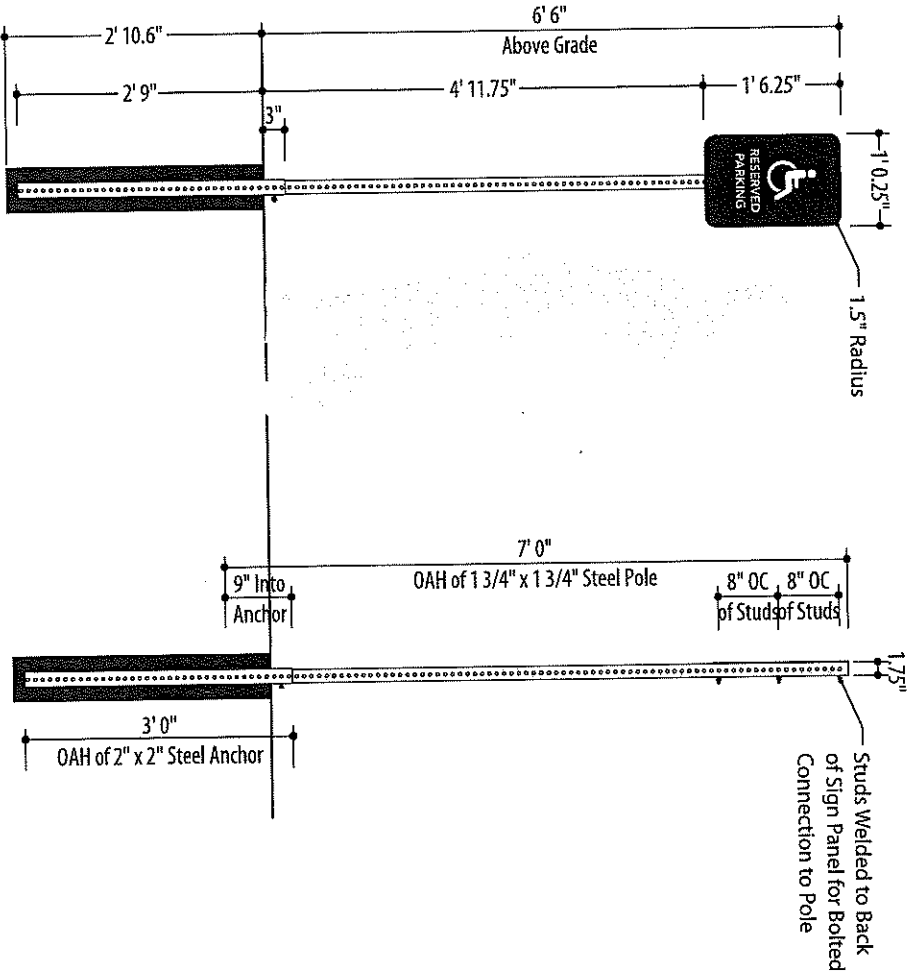
This drawing contains original elements created by Lauretano Sign Group, Inc. and is subject to all applicable copyright laws. This drawing may not be used in any way until full payment is received by Lauretano Sign Group, Inc. It is intended for review and approval purposes only, and is not to be reproduced, copied, transmitted by electronic media, or exhibited in any fashion to anyone outside your organization without the expressed written consent of Lauretano Sign Group, Inc.

LAURETANO
 SIGN GROUP

1 Tremco Drive, Terryville, CT 06786
 phone: 860.582.0233 fax: 860.583.0949
 signs@lauretano.com www.lauretano.com



Top View



COLORS / MATERIALS

Face: .090" Thk. Aluminum Sign Face with 1st surface applied Bristol Blue 3M 3630-97 Vinyl Applied to 1st Surface

Copy & Handicap Symbol:
 3M 680-10 White Reflective Vinyl Background Applied to 1st Surface

Pole: Pole to be 1 3/4" X 1 3/4" Galvanized 14 Gauge Square Steel Pole with 7/16" Holes 1" on Center and 7'-0" OAH. Pole to be Attached to 2" X 2" Galvanized 12 Gauge Steel Square Anchor with 7/16" Holes 1" on Center and 36" OAH. Drive Anchor Into Ground/soil Leaving Approx. 3" Exposed. Use a Corner Bolt to Secure the Post to the Sleeve through the back of post.

NOTES

Please confirm locations are in landscaping
 Please provide location photos

Scale: 1/2" = 1' Front View

Side View

Print 4401JK-2	Date 8/23/21	ES# 40841	Line 8	SP ML	Sign Type 17714.1A
----------------	--------------	-----------	--------	-------	--------------------

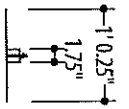
CLIENT APPROVAL

Title	Southcoast Health Care	Location	As Illustrated
City/State	New Bedford, MA	Size	6' 6" x 1' 0" (1.5 sqft)
Customer	Southcoast Health Care	Description	Single Face Non Illuminated

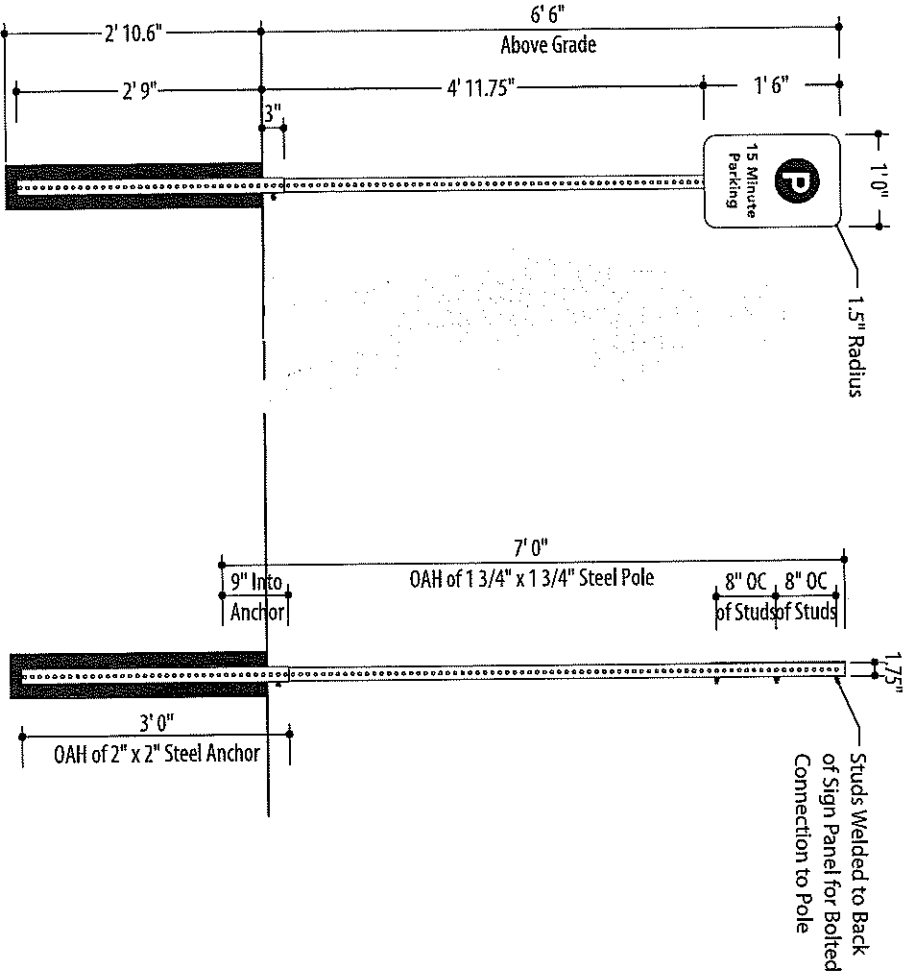
AUTHORIZED SIGNATURE _____ DATE _____

Int. Note

Regulatory Sign



Top View



Scale: 1/2" = 1' Front View

Side View

COLORS / MATERIALS

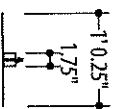
Face: .090" Thk. Aluminum Sign Face with 1st surface applied 3M 680-10 White Reflective Vinyl Background.
Copy & Handicap Symbol: Bristol Blue (Handicapped) 3M 3630-97 Vinyl Applied to 1st Surface
Pole: Pole to be 1 3/4" X 1 3/4" Galvanized 14 Gauge Square Steel Pole with 7/16" Holes 1" on Center and 7'-0" OAH.
 Pole to be Attached to 2" X 2" Galvanized 12 Gauge Steel Square Anchor with 7/16" Holes 1" on Center and 36" OAH.
 Drive Anchor Into Ground/soil Leaving Approx. 3" Exposed.
 Use a Corner Bolt to Secure the Post to the Sleeve through the back of post.

NOTES

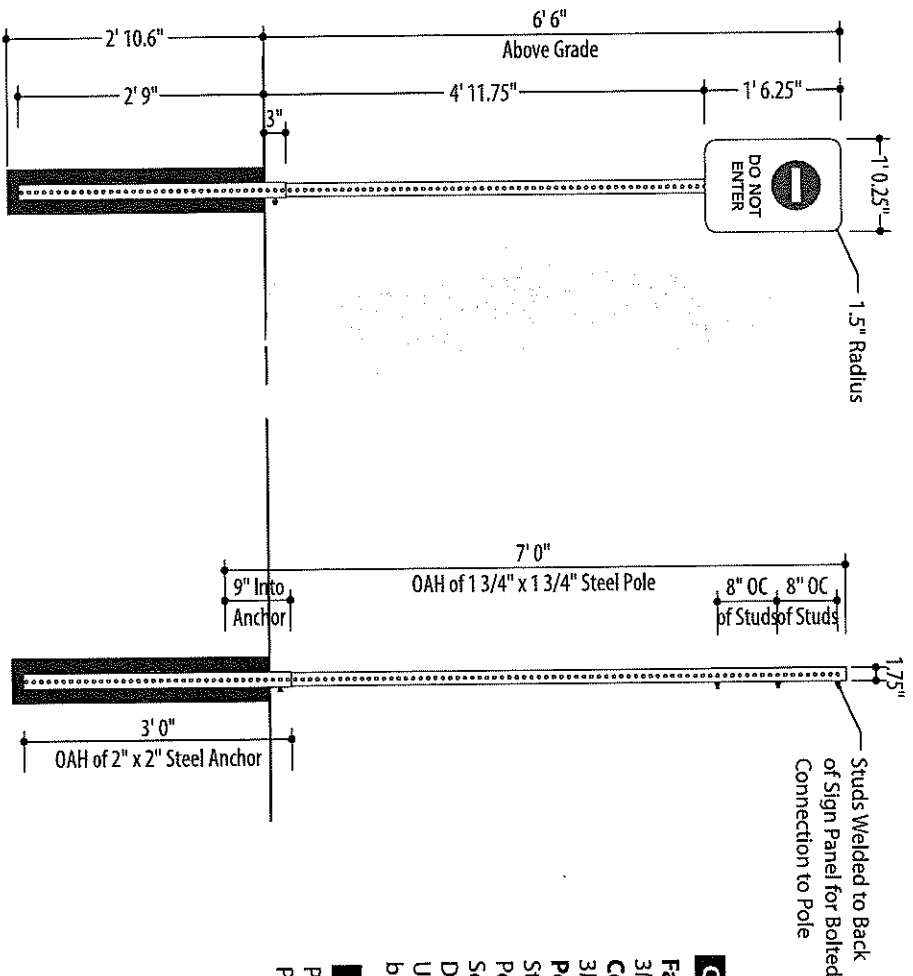
Please confirm locations are in landscaping
 Please provide location photos

Print 4402PK	Date 05/24/21	ES# 40841	Line 8	SP ML	Sign Type 17714.1A
CLIENT APPROVAL		Title	Southcoast Health Care		Location As Illustrated
		City/State	New Bedford, MA		Size 6' 6" x 1' 0" (1.5 sqft)
		Customer	Southcoast Health Care		Description Single Face Non Illuminated
AUTHORIZED SIGNATURE		DATE	Int Note		Regulatory Sign

LAURETANO
 S I G N S
 1 Tremco Drive, Terryville, CT 06786
 phone: 860.582.0233 fax: 860.583.0949
 signs@laureitano.com www.laureitano.com



Top View



COLORS / MATERIALS

Face: .090" Thk. Aluminum Sign Face with 1st surface applied
3M 680-10 White Reflective Vinyl Background.

COPY & DNE Symbol:

3M HP Black PSV Copy & 3M 480-72 Reflective Symbol Applied 1st Surface
Pole: Pole to be 1 3/4" X 1 3/4" Galvanized 14 Gauge Square
Steel Pole with 7/16" Holes 1" on Center and 7'-0" OAH.
Pole to be Attached to 2" X 2" Galvanized 12 Gauge Steel
Square Anchor with 7/16" Holes 1" on Center and 36" OAH.
Drive Anchor Into Ground/soil Leaving Approx. 3" Exposed.
Use a Corner Bolt to Secure the Post to the Sleeve through the
back of post.

NOTES

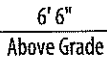
Please confirm locations are in landscaping
Please provide location photos

Scale: 1/2" = 1' Front View

Side View

Print 1095JK	Date 8/23/21	OO#40841	Line Line#	SP MGL	Sign Type 17714.1A
CLIENT APPROVAL		Title	Southcoast Health		Location As Illustrated
		City/State	Wareham, MA		Size 6'6" x 1'0" (1.5 sqft)
		Customer	Southcoast Health		Description Single Face Non Illuminated
AUTHORIZED SIGNATURE		DATE	Int. Note		Regulatory Sign

LAURETANO
SIGN GROUP
1 Tremco Drive, Terryville, CT 06786
phone: 860.582.0233 fax: 860.583.0949
signs@lauretano.com www.lauretano.com



Face: .090" Thk. Aluminum Sign Face with 1st surface applied 3M 680-10 White Reflective Vinyl Background.

NOTES

Please confirm locations are in landscaping
Please provide location photos

Scale: 1/2" = 1' Front View

Side View

CLIENT APPROVAL

AUTHORIZED SIGNATURE

DATE _____

Int. Note

.....

Regulatory

Sign

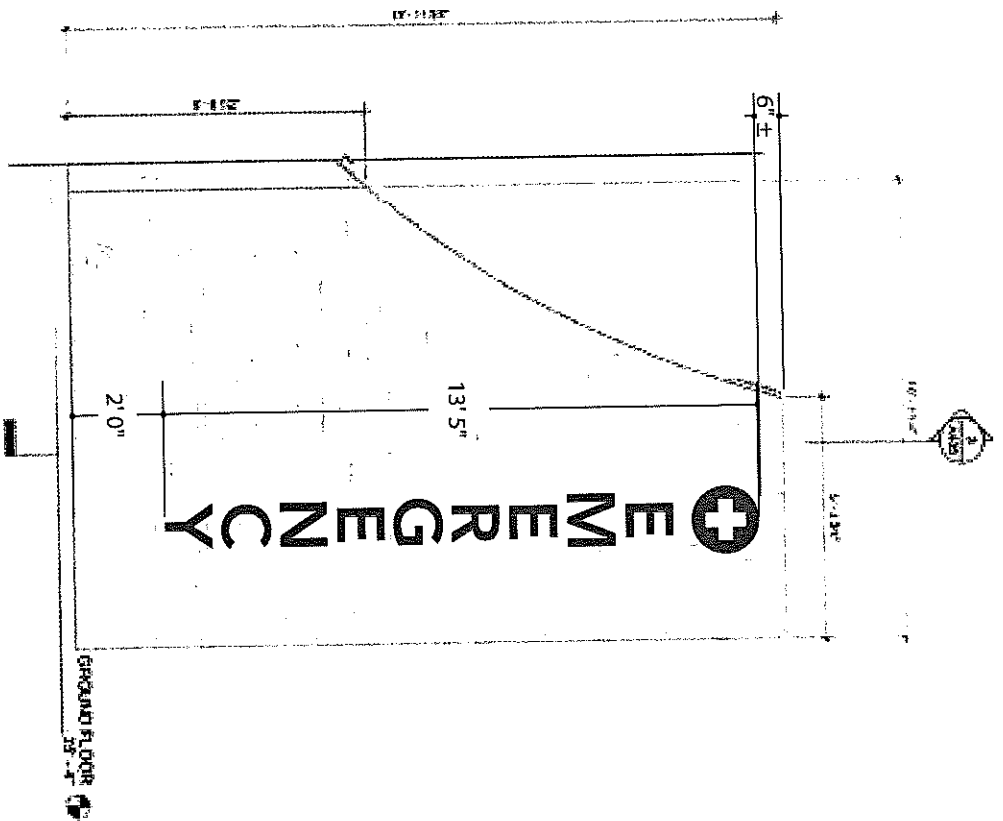
LAURETANO

0
1
2
3
4
5
6
7
8
9

1 Tremco Drive, Terryville, CT 06786

phone: 860.582.0233 fax: 860.583.0949

signs@lauretano.com www.lauretano.com



Scale: 1/4" = 1'

PROPOSED SIGNAGE

Print 4399JK-4 Date 10/18/21

CLIENT APPROVAL

ES# 40841 Line 6 SP ML
Title Southcoast Health Care
City/State New Bedford, MA
Customer Southcoast Health Care

Int. Note

AUTHORIZED SIGNATURE

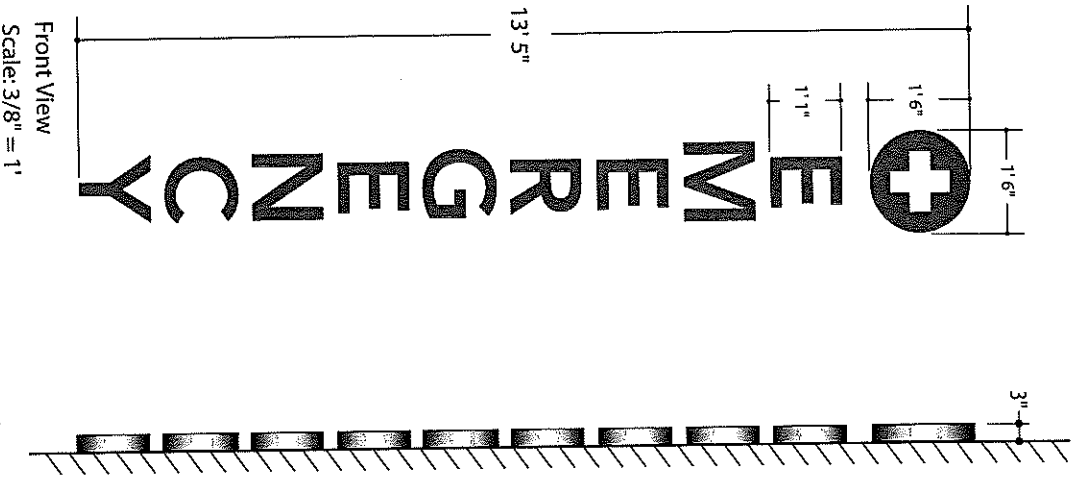
DATE

1 of 2

This drawing contains original elements created by Lauretano Sign Group, Inc. and is subject to all applicable copyright laws. This drawing may not be used in any way until full payment is received by Lauretano Sign Group, Inc. It is intended for review and approval purposes only and is not to be reproduced, copied, transmitted by electronic media, or exhibited in any fashion to anyone outside your organization without the expressed written consent of Lauretano Sign Group, Inc.

LAURETANO
SIGN GROUP

1 Tremco Drive, Terryville, CT 06786
phone: 860.582.0233 fax: 860.583.0949
signs@lauretano.com www.lauretano.com

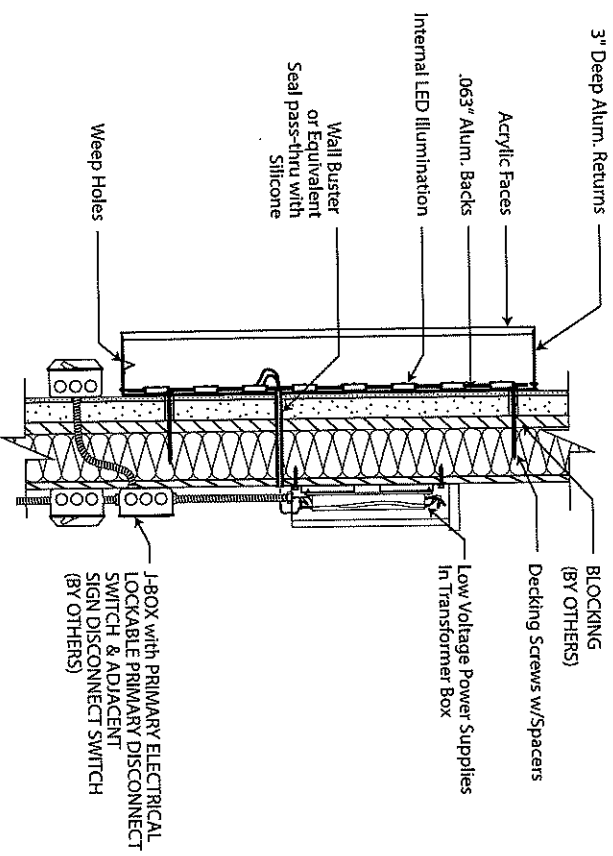


COLORS / MATERIALS

Trimless Channel Letters (Steelart Edgelit 102 or Equivalent) :
 Faces: Clear Acrylic Faces with 1st surface applied 3M 3630-143 Poppey Red PSV.
 and 2nd surface Diffuser Film 3M 3635-70.
 Returns: 3" Deep Brushed Aluminum (Satin Finish)
 Backs: .063" Thk. Aluminum Back.
 Illumination: Sloan Red LED Illumination

NOTES

**Primary Electrical By Others.
 Survey Required.**



Typical Channel Letter Mounting (NTS)

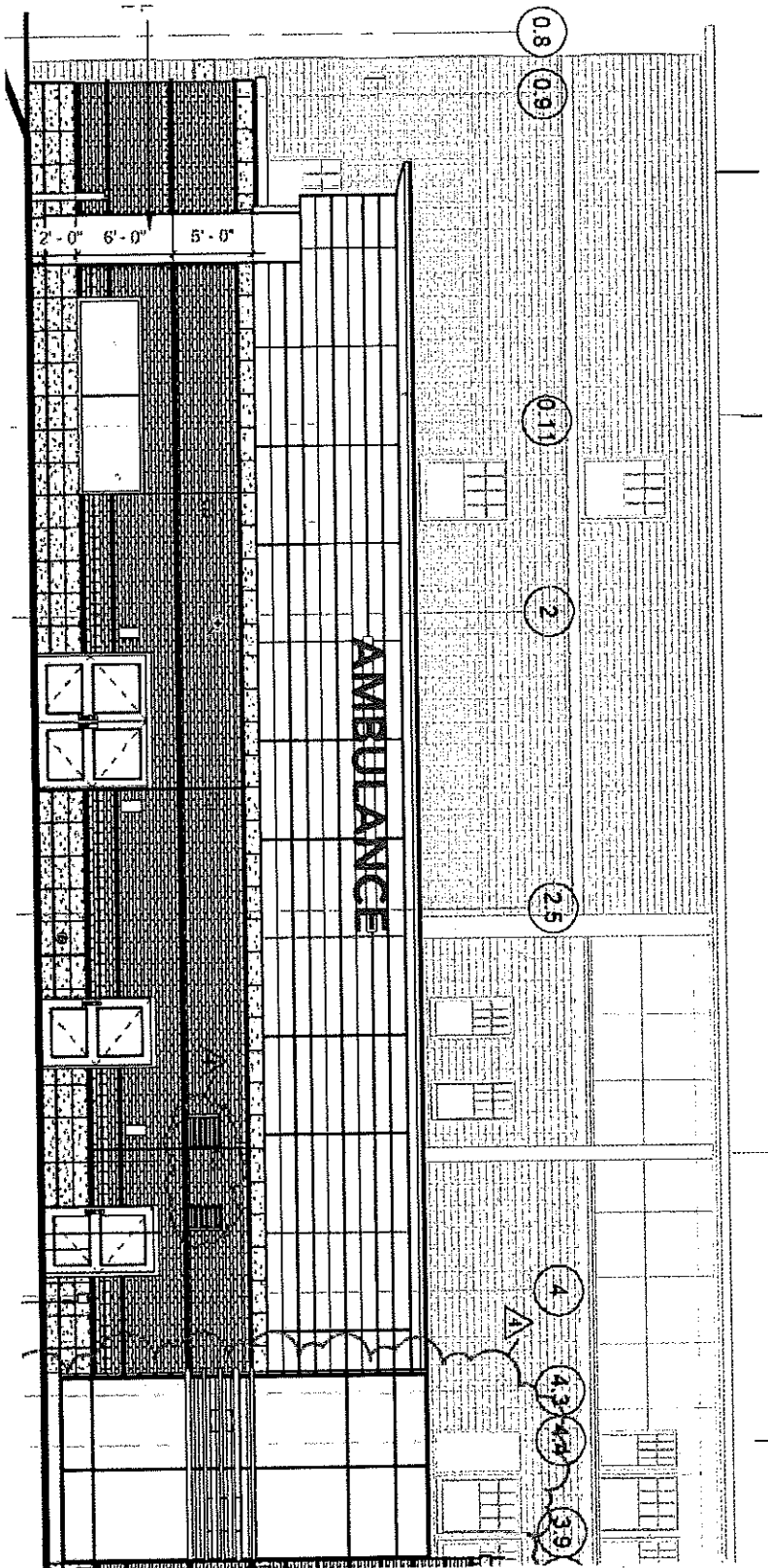
Note: For preliminary design purposes only.
 Accurate field survey and dimension verification required before beginning construction.
☐ Survey and Verification Complete

Volt: 120 - Power is based off 120 volt.
 If signs use anything other than 120 volt, then a difference in price will apply or a step down transformer will need to be used.

PROCEED TO PRODUCTION		Print 4399JK-4	Date 10/18/21	Installation Method
		ES# 40841	Line 6	Decking Screws & Silicone
AUTHORIZED SIGNATURE		G = Critical Dimension for Internal Quality Control		
DATE		UL FILE NO. E70436		
		Amps		
		Volts		

2 of 2 This drawing contains original elements created by Lauretano Sign Group, Inc. and is subject to all applicable copyright laws. This drawing may not be used in any way until full payment is received by Lauretano Sign Group, Inc. It is intended for review and approval purposes only, and is not to be reproduced, copied, transmitted by electronic media, or exhibited in any fashion to anyone outside your organization without the expressed written consent of Lauretano Sign Group, Inc.

LAURETANO
 SIGN GROUP
 1 Tremco Drive, Terryville, CT 06786 - Phone: 860.582.0233
 signs@lauretano.com www.lauretano.com



Scale: 3/32" = 1'

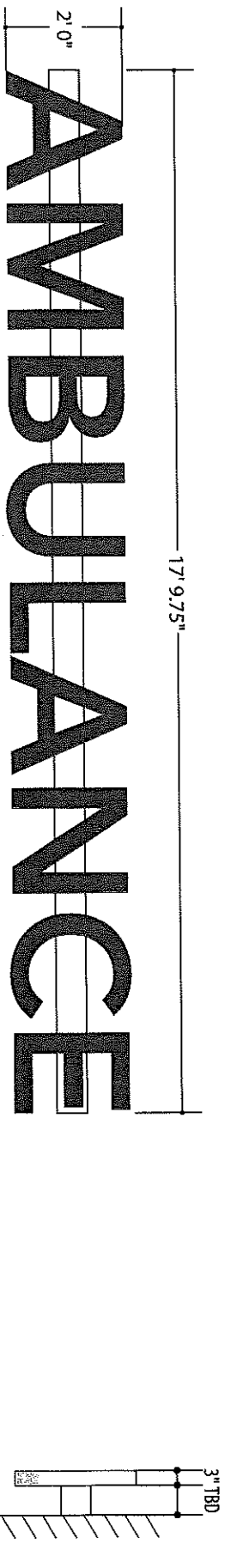
Print	4628JK-2	Date	8/23/21
CLIENT APPROVAL			
ES# 40841		Line 14	SP ML
Title		Southcoast Health Care	
City/State		Wareham, MA	
Customer		Southcoast Health Care	
Sign Type		Channel Letters on Raceway	
Location		As Illustrated	
Size		2'0" x 17'9.75" (35.62 sqft)	
Description		Channel Letters on Raceway	
AUTHORIZED SIGNATURE		DATE	
Int. Note			

1 of 2

This drawing contains original elements created by Lauretano Sign Group, Inc., and is subject to all applicable copyright laws. This drawing may not be used in any way until full payment is received by Lauretano Sign Group, Inc. It is intended for review and approval purposes only, and is not to be reproduced, copied, transmitted by electronic media, or exhibited in any fashion to anyone outside your organization without the expressed written consent of Lauretano Sign Group, Inc.

LAURETANO
SIGN GROUP
1 Tremco Drive, Terryville, CT 06786
phone: 860.582.0233 fax: 860.583.0949
signs@lauretano.com www.lauretano.com

1 of 2 The drawing contains original elements created by Lauretano Sign Group, Inc. and is subject to all applicable copyright laws. This drawing may not be used in any way until full payment is received by Lauretano Sign Group, Inc. It is intended for review and approval purposes only and is not to be reproduced, copied, transmitted by electronic media, or exhibited in any fashion to anyone outside your organization without the expressed written consent of Lauretano Sign Group, Inc.



Scale: 3/8" = 1'

Front View

Side View

COLORS / MATERIALS

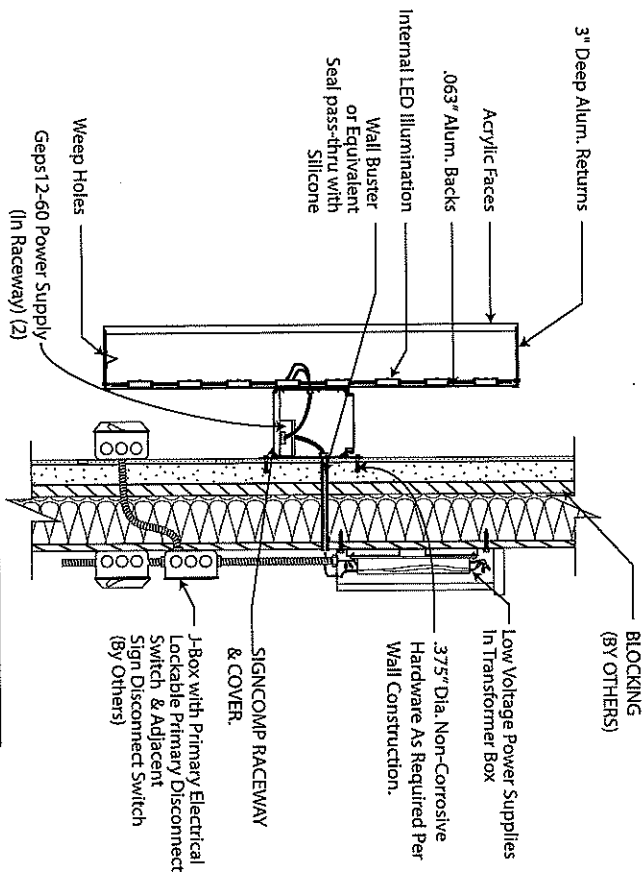
Channel Letters (Steelart Edgeit 102 or Equivalent) :

Faces: Clear Acrylic Faces with 1st Surface Applied 3M 3630-143 Poppey Red PSV.
and 2nd Surface Diffuser Film 3M 3635-70.
Returns: 3" Deep Brushed Aluminum (Satin Finish)
Backs: .063" Thk. Aluminum Back.
Illumination: Sloan Red LED Illumination
Channel Letters Mount on Raceway, Painted to Match Building Color.

NOTES

BLOCKING (BY OTHERS) REQUIRED
PRIMARY ELECTRICAL PROVIDED TO SIGN BY CUSTOMER'S ELECTRICIAN.
DESIGNED FOR 120V. IF PRIMARY POWER IS NOT 120V, ADDITIONAL CHARGES MAY APPLY.
FINAL CONNECTION MADE BY SIGN CONTRACTOR AS DETERMINED PER LOCAL SIGN ORDINANCES
UL FILE NO#E70436 - UL LABELS REQUIRED - INSTALL IN ACCORDANCE WITH NEC

Note: For preliminary design purposes only.
Accurate field survey and dimension verification
required before beginning construction.
☐ Survey and Verification Complete



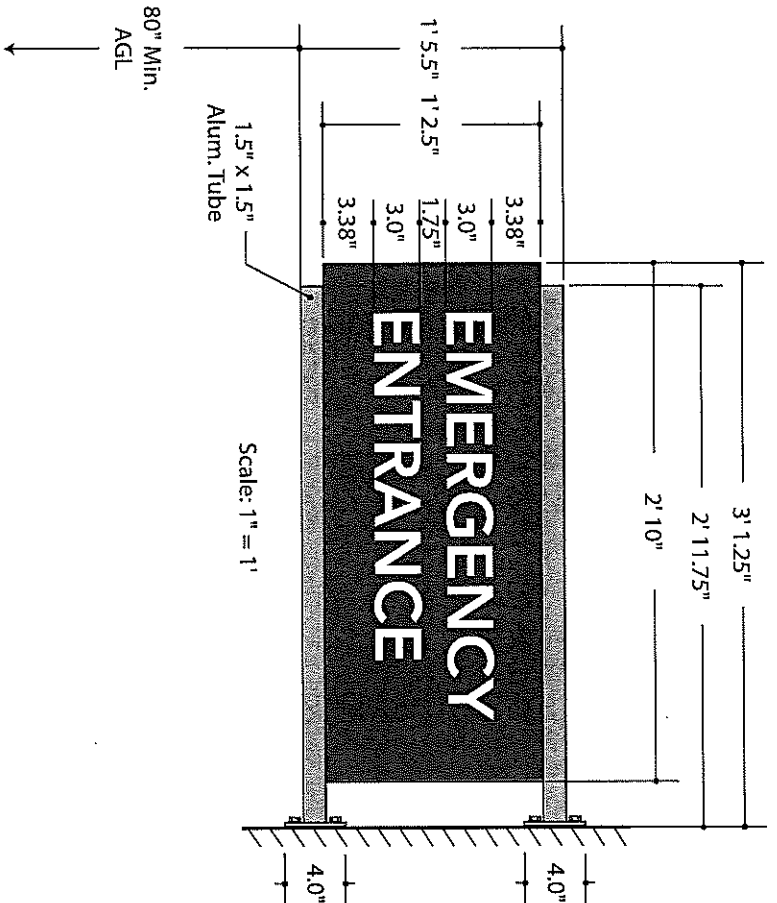
Typical Channel Letter Mounting (NTS)

PROCEED TO PRODUCTION

Print	4628JK-2	Date	8/23/21	Installation Method	ANCHORS
ES#	40841	Line	14		
6 = Critical Dimension for Internal Quality Control		UL FILE NO. E70436		Amps	Volts 120

AUTHORIZED SIGNATURE

DATE



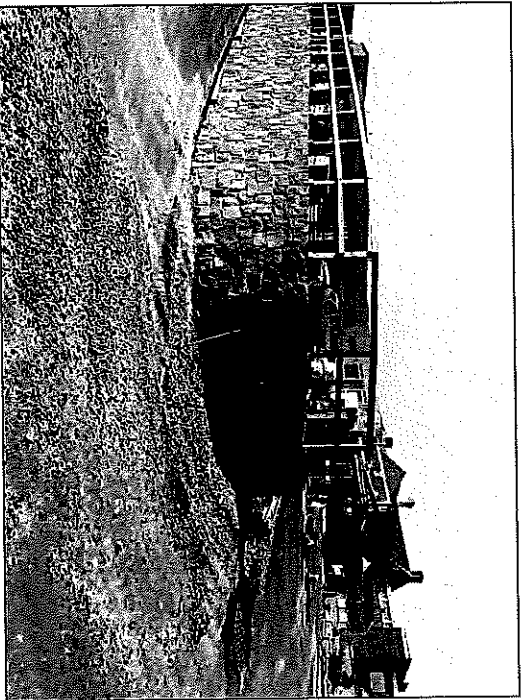
COLORS / MATERIALS

NOTES

Print	1097JK	Date	8/23/21	OO#40841	Line	18	SP	MGL	Sign Type	W12.C.1
CLIENT APPROVAL										
				Title	Southcoast Health				Location	Refer to Site Plan
				City/State	Wareham, MA				Size	1' 5.5" x 3' 1.25"
				Customer	Southcoast Health				Description	Double Sided Non-Illuminated
AUTHORIZED SIGNATURE				DATE	Int. Note		Flag Mounted Wall Sign			
This drawing contains original elements created by Lauretano Sign Group, Inc., and is subject to all applicable copyright laws. This drawing may not be used in any way until full payment is received by Lauretano Sign Group, Inc. It is intended for review and approval purposes only, and is not to be reproduced, copied, transmitted by electronic means, or exhibited in any fashion, to anyone outside your organization without the expressed written consent of Lauretano Sign Group, Inc.										

LAURETANO
S I G N G R O U P

1 Tremco Drive, Terryville, CT 06786
phone: 860.582.0233 fax: 860.553.0949
signs@lauretano.com www.lauretano.com

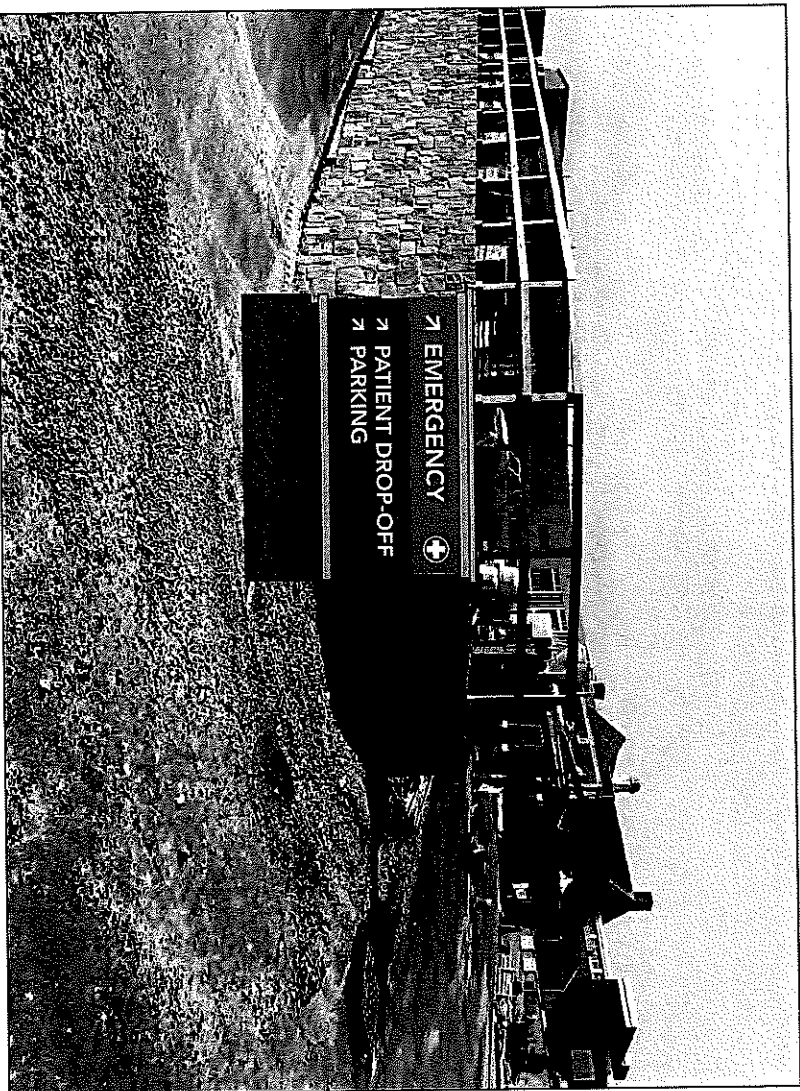


EXISTING CONDITION

SCOPE OF WORK

Install New Illuminated Directional Monument

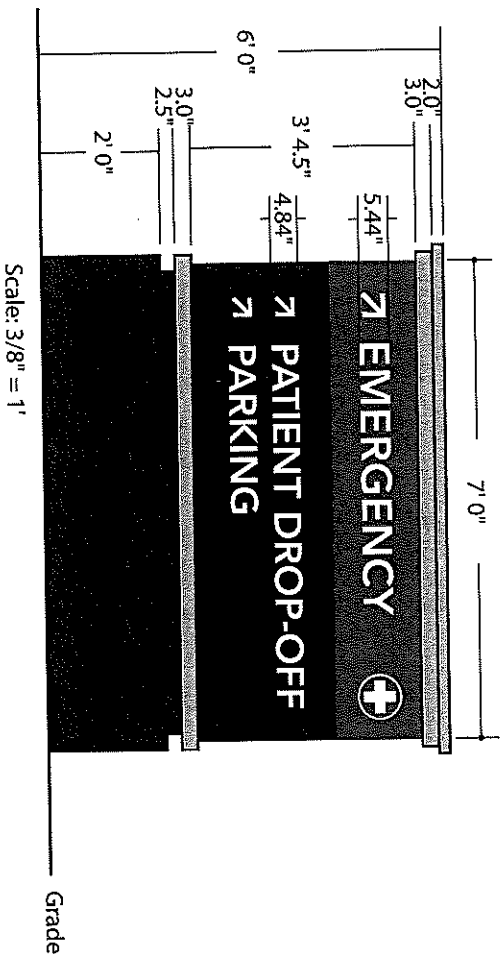
Note: For preliminary design purposes only.
Accurate field survey and dimension verification
required before beginning construction.
☐ Survey and Verification Complete



PROPOSED CONDITION

Print 4629JK-3	Date 10/18/21	ES# 40841	Line 25	SP ML	Sign Type MN2.C.EX.1 - Custom
CLIENT APPROVAL		Title	Southcoast Health Care		Location As Illustrated
		City/State	Wareham, MA		Size 3' 4.5" x 10' 0" (33.75 sqft), 8' 0" OAH
		Customer	Southcoast Health Care		Description Illuminated Directional Monument
AUTHORIZED SIGNATURE		DATE	Int. Note		

This drawing contains original elements created by Lauretano Sign Group, Inc., is property of Lauretano Sign Group, Inc., and is subject to all applicable copyright laws. This drawing may not be used in any way until full payment is received by Lauretano Sign Group, Inc. It is intended for review and approval purposes only, and is not to be reproduced, copied, transmitted by electronic media, or exhibited in any fashion to anyone outside your organization without the expressed written consent of Lauretano Sign Group, Inc.



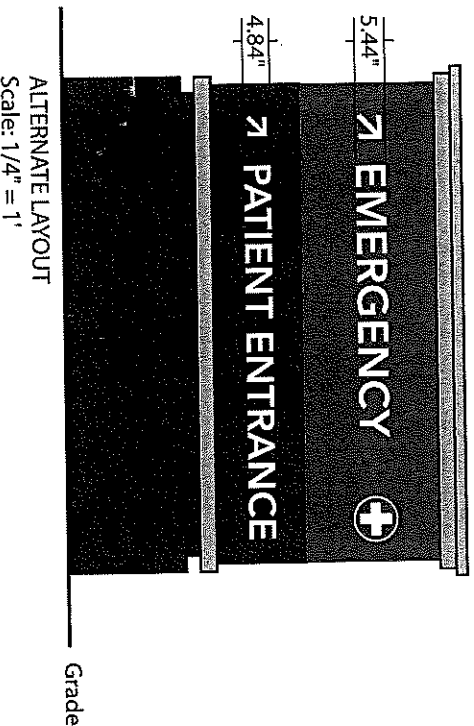
COLORS / MATERIALS

Aluminum Cap: To be Built from 0.125" Thk. Aluminum Tube, Paint to Match PMS Cool Gray 6c.
Sign Cabinet: Aluminum Tube Frame with 0.125" Thk. Faces & Returns
Emergency Panel: Aluminum Panel Painted to Match Red PMS 485 C
Cut-Thru Copy Backed up with Translucent White Acrylic.
Message Panel: Aluminum Panel Painted to Match Gray PMS 425 C
Cut-Thru Copy Backed up with Translucent White Acrylic.
Illumination: Sloan LED White Prism 6500k
Reveal: 2.5" Aluminum Tube Painted to match PMS Cool Gray 6c
Cladding: 1" x 1" Alum. Tube Frame with .080" Aluminum Cladding
Posts: (2) 3" x 3" Steel Posts.
Footing: Direct Burial 2' 0" Dia. x 3' 6" Deep #3000 Concrete

NOTES

Primary Electrical By Others

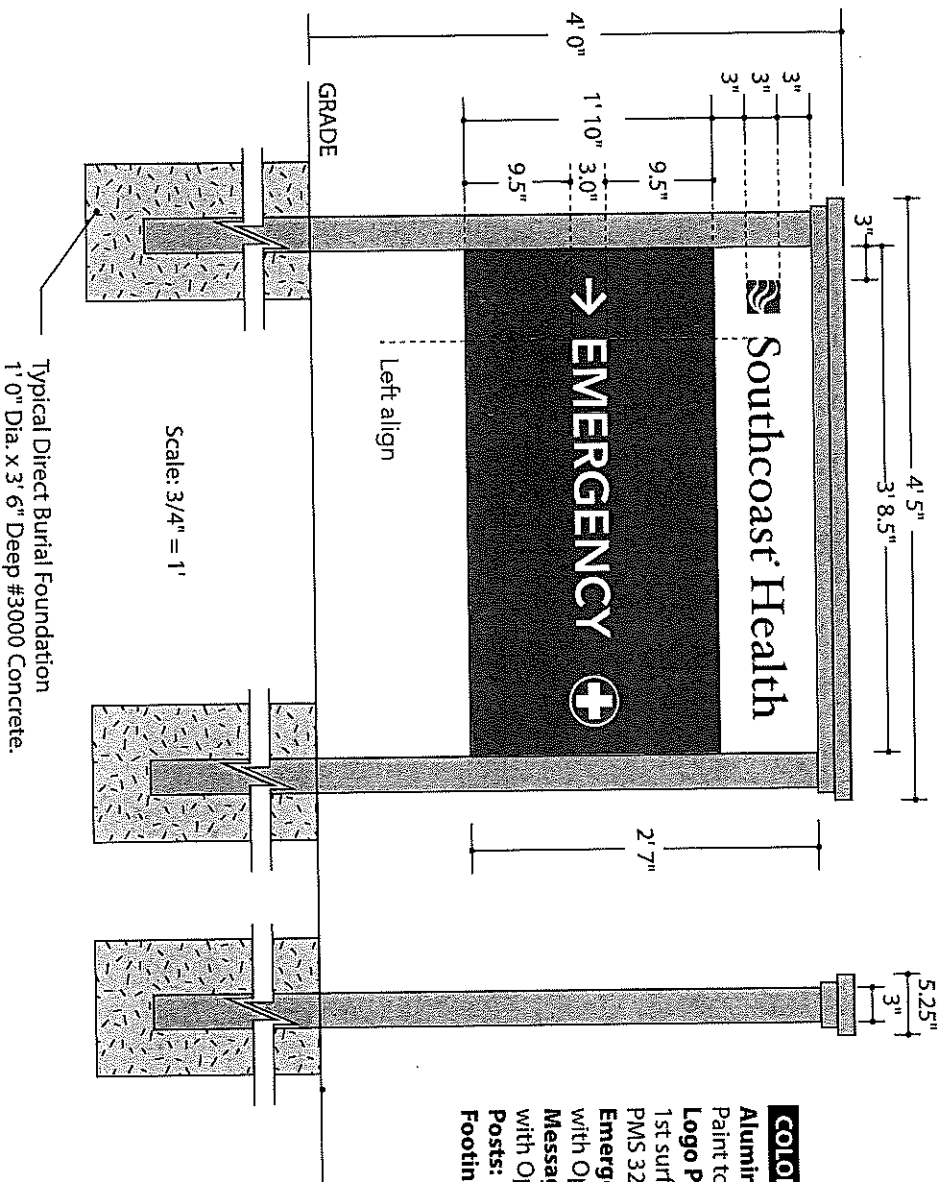
Volt: 120 - Power is based off 120 volt.
 If signs use anything other than 120 volt,
 then a difference in price will apply or a step
 down transformer will need to be used.



ALTERNATE LAYOUT
 Scale: 1/4" = 1'

PROCEED TO PRODUCTION

AUTHORIZED SIGNATURE	DATE		INSTALLATION METHOD	
	Print	4629JK-3	Date	10/18/21
6" = Critical Dimension for Internal Quality Control	ES#	40841	Line	25
	UL FILE NO. E70436		Direct Burial	
		Amps	Volts	



COLORS / MATERIALS

Aluminum Cap: Cornice to be Built from 0.125" Thk Aluminum Tube, Paint to Match PMS Cool Gray 6c.

Logo Panel & Logo: 0.125" Thk Aluminum Panel Painted White with 1st surface applied HP PSV digitally printed PSV to Match PMS 3282c Turquoise & PMS 425c Gray.

Emergency Panel: Aluminum Panel Painted to Match Red PMS 485 C with Opaque White 3M Vinyl 180C-10 (White) Applied 1st Surface.

Message Panel: Aluminum Panel Painted to Match Gray PMS 425 C with Opaque White 3M Vinyl 180C-10 (White) Applied 1st Surface.

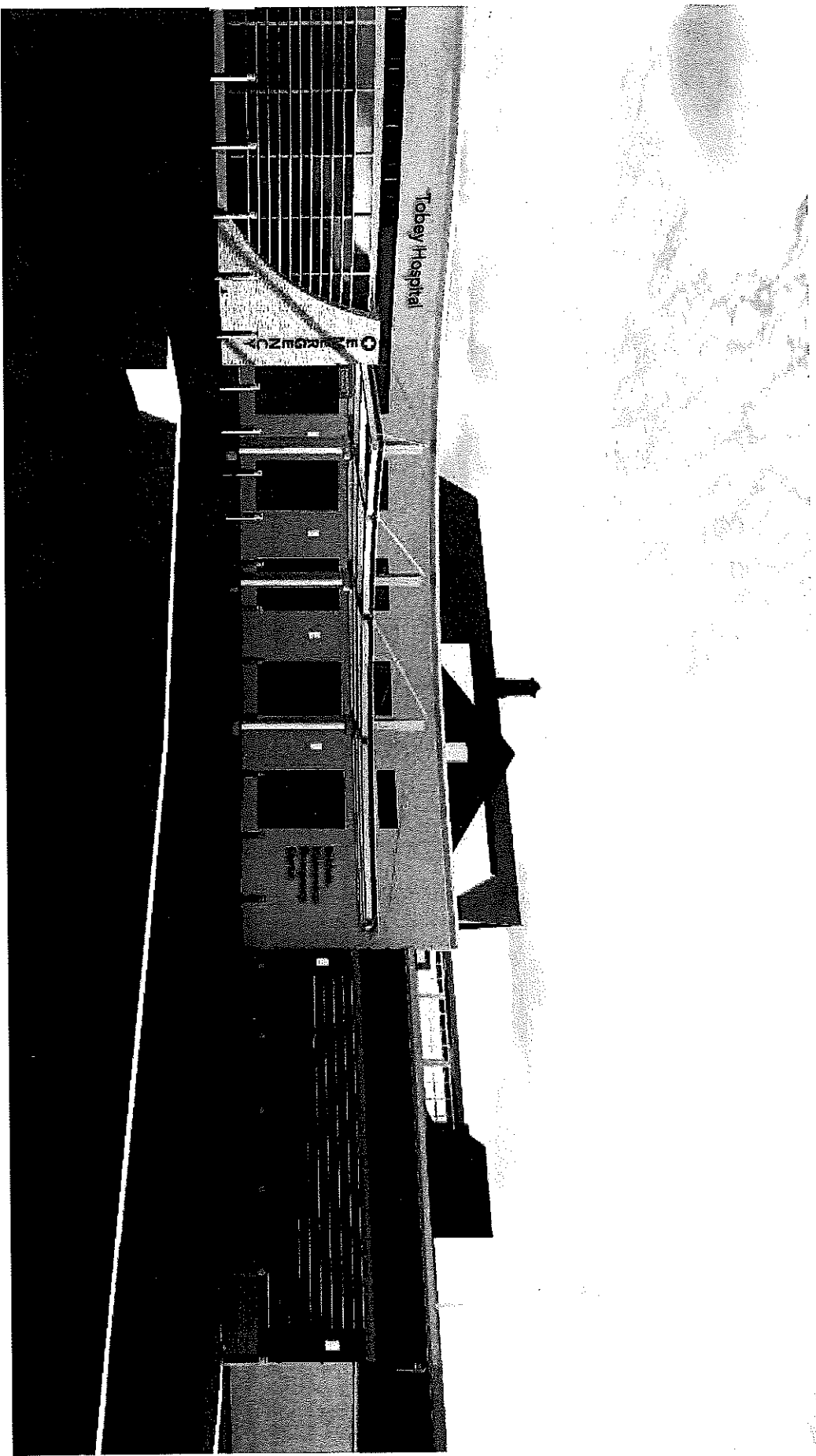
Posts: (2) 3" x 3" Aluminum Post Paint to Match PMS Cool Gray 6c.

Footing: Direct Burial 1' 0" Dia. x 3' 6" Deep #3000 Concrete

Print	1096JK-2	Date	8/30/21	OG#40841	Line	17	SP	MGL	Sign Type	Directional Sign
CLIENT APPROVAL										
				Title	Southcoast Health			Location		
				City/State	Wareham, MA			Size		
				Customer	Southcoast Health			Description		
				Post and Panel Branded Directional			Sign			
AUTHORIZED SIGNATURE				DATE						
				Int. Note						

This drawing contains original elements created by Lauretano Sign Group, Inc., is property of Lauretano Sign Group, Inc. and is subject to all applicable copyright laws. This drawing may not be used in any way, until full payment is received by Lauretano Sign Group, Inc. It is intended for review and approval purposes only, and is not to be reproduced, copied, transmitted by electronic media, or exhibited in any fashion to anyone outside your organization without the expressed written consent of Lauretano Sign Group, Inc.

This drawing contains original elements created by Lauretano Sign Group, Inc. and is subject to all applicable copyright laws. This drawing may not be used in any way until full payment is received by Lauretano Sign Group, Inc. It is intended for review and approval purposes only, and is not to be reproduced, copied, transmitted by electronic media, or exhibited in any fashion to anyone outside your organization without the expressed written consent of Lauretano Sign Group, Inc.



Print 1165JK-5 Date 10/18/21

CLIENT APPROVAL

OO#40841	Line 21	SP MGL	Sign Type	Plate Letters
Title	Southcoast Health		Location	As Illustrated
City/State	Wareham, MA		Size	6' 2.4" X 7' 0" (31.2 sqft)
Customer	Southcoast Health		Description	1/4" Thk. Alum. Plate Letters
AUTHORIZED SIGNATURE	DATE	Int. Note		

1 of 2 This drawing contains original elements created by Lauretano Sign Group, Inc., and is subject to all applicable copyright laws. This drawing may not be used in any way until full payment is received by Lauretano Sign Group, Inc. It is intended for review and approval purposes only, and is not to be reproduced, copied, transmitted by electronic media, or exhibited in any fashion to anyone outside your organization without the expressed written consent of Lauretano Sign Group, Inc.

LAURETANO
SIGN GROUP

1 Tremco Drive, Terryville, CT 06786
phone: 860.582.0233 fax: 860.583.0949
signs@lauretano.com www.lauretano.com

7' 0"

1' 0"

Baldwin Makepeace Emergency Center

6' 2.4"

Scale: 1/2" = 1'

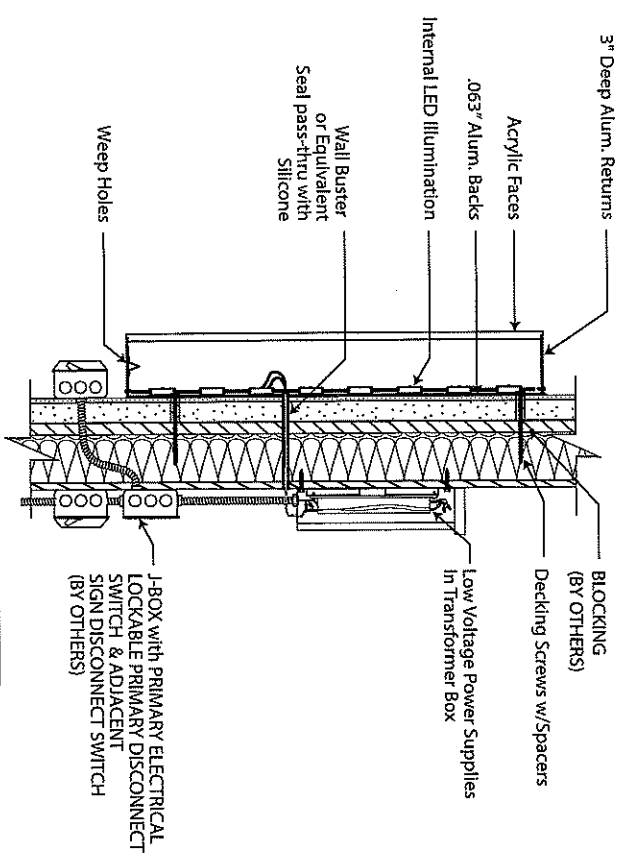
COLORS / MATERIALS

Trimless Channel Letters (Steelart Edgelite 102 or Equivalent):
 Letter Faces: White Acrylic with 1st Surface Applied 3M 3650-114 with Digitally Printed Gray to Match PMS 425C. (Gray Day/White Night)
 Returns: 3" Deep Brushed Aluminum Painted PMS 425C (Satin Finish)
 Backs: .063" Thk. Aluminum Backs.
 Illumination: 6500K "White Prism" Sloan LED Illumination

NOTES

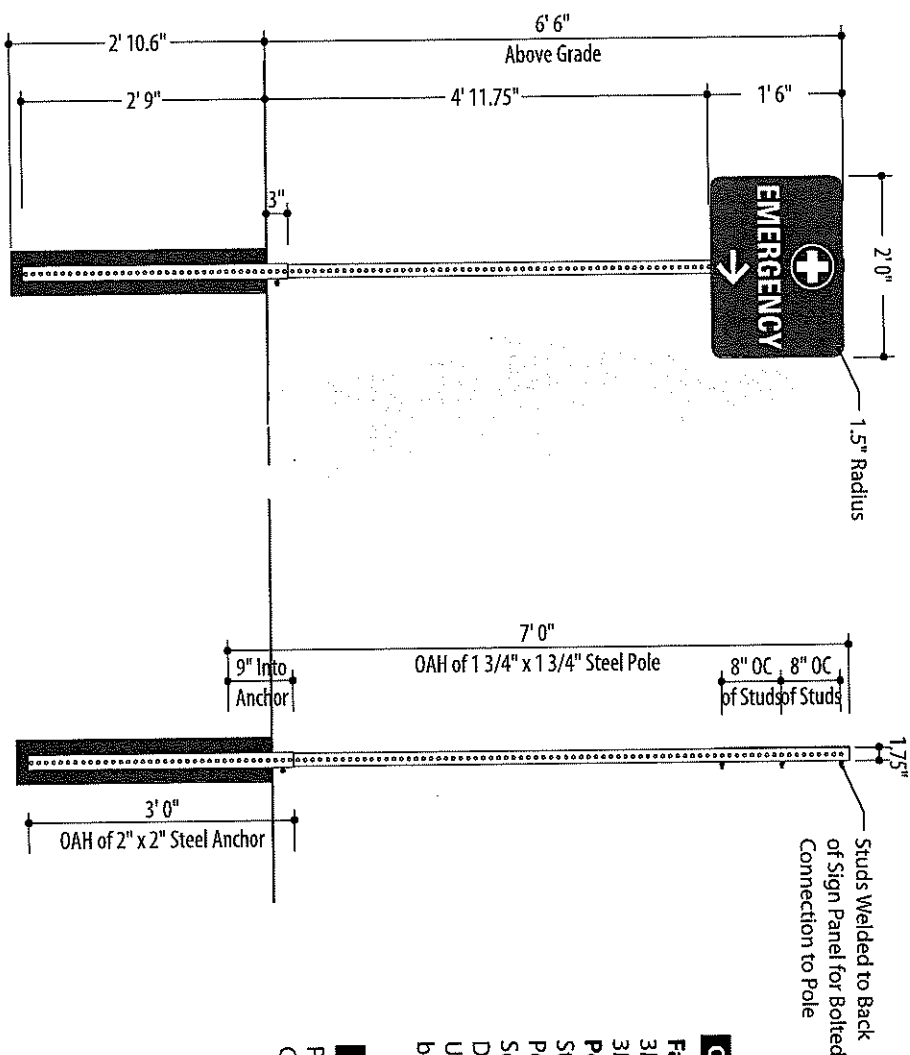
Primary Electrical By Others.

Volt: 120 - Power is based off 120 volt.
 If signs use anything other than 120 volt,
 then a difference in price will apply or a step
 down transformer will need to be used.



Typical Channel Letter Mounting (NTS)

PROCEED TO PRODUCTION		Installation Method	
Print	1165JK-5	Date	10/18/21
ES#	40841	Line	21
AUTHORIZED SIGNATURE _____ DATE _____ G = Critical Dimension for Internal Quality Control		UL FILE NO. E70436	Amps _____ Volts _____
2 of 2 This drawing contains original elements created by Lauretano Sign Group, Inc., is property of Lauretano Sign Group, Inc. and is subject to all applicable copyright laws. This drawing may not be used in any way until full payment is received by Lauretano Sign Group, Inc. It is intended for review and approval purposes only, and is not to be reproduced, copied, transmitted by electronic media, or exhibited in any fashion to anyone outside your organization without the expressed written consent of Lauretano Sign Group, Inc.		LAURETANO SIGN GROUP 1 Tremco Drive, Terryville, CT 06786 • Phone: 860.582.0233 signs@lauretano.com www.lauretano.com	

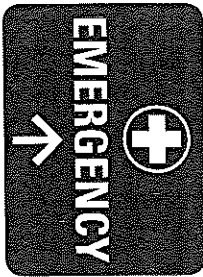


Face: .090" Thk. Aluminum Sign Face with 1st surface applied 3M 480-72 Reflective Red Background & 3M 680-10 White Reflective Vinyl Copy.

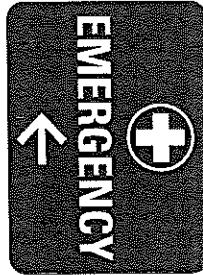
Pole: Pole to be 1 3/4" X 1 3/4" Galvanized 14 Gauge Square Steel Pole with 7/16" Holes 1" on Center and 7'-0" OAH. Pole to be Attached to 2" X 2" Galvanized 12 Gauge Steel Square Anchor with 7/16" Holes 1" on Center and 36" OAH. Drive Anchor Into Ground/soil Leaving Approx. 3" Exposed. Use a Corner Bolt to Secure the Post to the Sleeve through the back of post.

Please confirm locations are in landscaping
Confirm Arrow Direction and Locations prior to production.

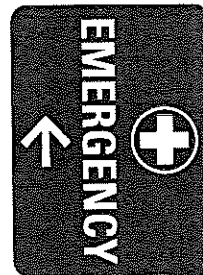
Print	1266JK-4	Date	10/18/21	QQ#4084.1	Line	22	SP	MGL	Sign Type	RS Custom
CLIENT APPROVAL										
				Title	Southcoast Health			Location	As Illustrated	
				City/State	Wareham, MA			Size	1' 6" x 2' 0" (3 sqft)	
				Customer	Southcoast Health			Description	Traffic Control Sign	
AUTHORIZED SIGNATURE				DATE						
				Int. Note						
<small>This drawing contains original elements created by Lauretano Sign Group, Inc. and is property of Lauretano Sign Group, Inc. and is subject to all applicable copyright laws. This drawing may not be used in any way until full payment is received by Lauretano Sign Group, Inc. It is intended for review and approval purposes only, and is not to be reproduced, copied, transmitted by electronic media, or exhibited in any fashion to anyone outside your organization without the expressed written consent of Lauretano Sign Group, Inc.</small>										
LAURETANO SIGN GROUP 1 Tremco Drive, Terryville, CT 06786 phone: 860.582.0233 fax: 860.583.0949 signs@lauretano.com www.lauretano.com										



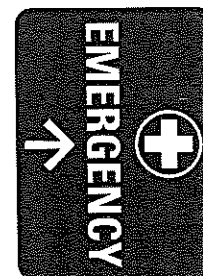
Sign 1



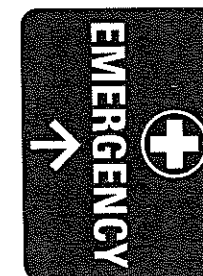
Sign 2



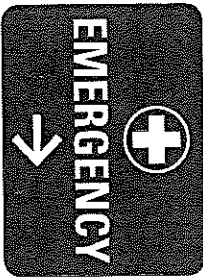
Sign 3



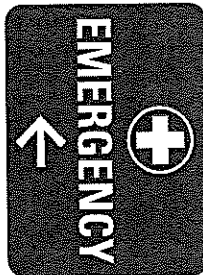
Sign 4



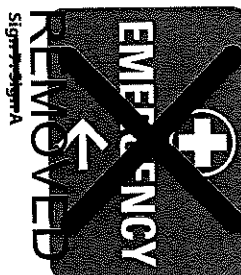
Sign 5



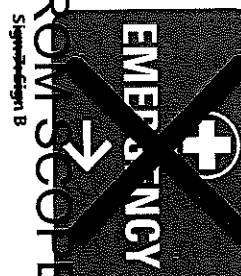
Sign 6: Side A



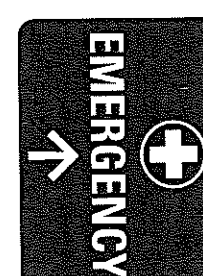
Sign 6: Side B



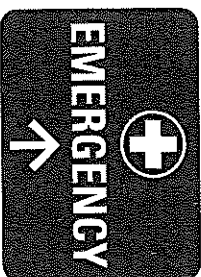
Sign 7: Side A



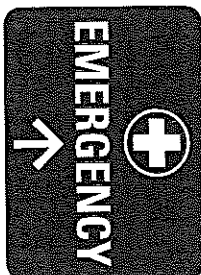
Sign 8: Side B



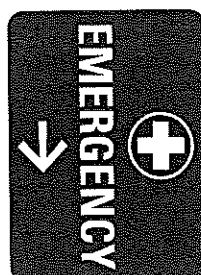
Sign 8



Sign 9



Sign 10



Sign 11

Scale: 3/4" = 1'

PROCEED TO PRODUCTION

Print 1266JK-4
ES# 40841

Date 10/18/21
Line 22

Installation Method
Direct Burial

AUTHORIZED SIGNATURE

DATE

6 = Critical Dimension for
Internal Quality Control

UL FILE NO. E70436

Amps

Volts

LAURETANO
SIGN GROUP

1 Tremco Drive, Terryville, CT 06786 • Phone: 860.582.0233
signs@lauretano.com www.lauretano.com

