

MERCHANT'S WAY IMPROVEMENTS

Town of Wareham





Team

Town of Wareham - Community
Economic Development Authority
(CEDA)



together with

Southeastern Regional Planning & Economic
Development District
(SRPEDD)



Greater Attleboro-Taunton Regional
Transit Authority
(GATRA)



WDG | WATERFIELD DESIGN GROUP





Goals

- Create a more vibrant Wareham Village thru improvements to Merchant's Way
- Create a healthy balance between automobiles, buses, trains, bikes and pedestrians
- Create a more livable, pedestrian friendly area where people feel safe and comfortable – meeting, shopping & living
- Create opportunities to connect to the Waterfront and improve the water quality



Process

Series of Meetings & Workshops

- April 4th Department Heads
- April 10th Town Boards & Commissions
- May 13th Business & Property Owners
- May 18th General Public
- July 8th Business & Property Owners
- March thru July CEDA, GATRA & SRPEDD
- August 20th Board of Selectmen Meeting
Conceptual Plan Presentation



Focus Area — 1 / 3 mile length





Context - Connections





Challenges

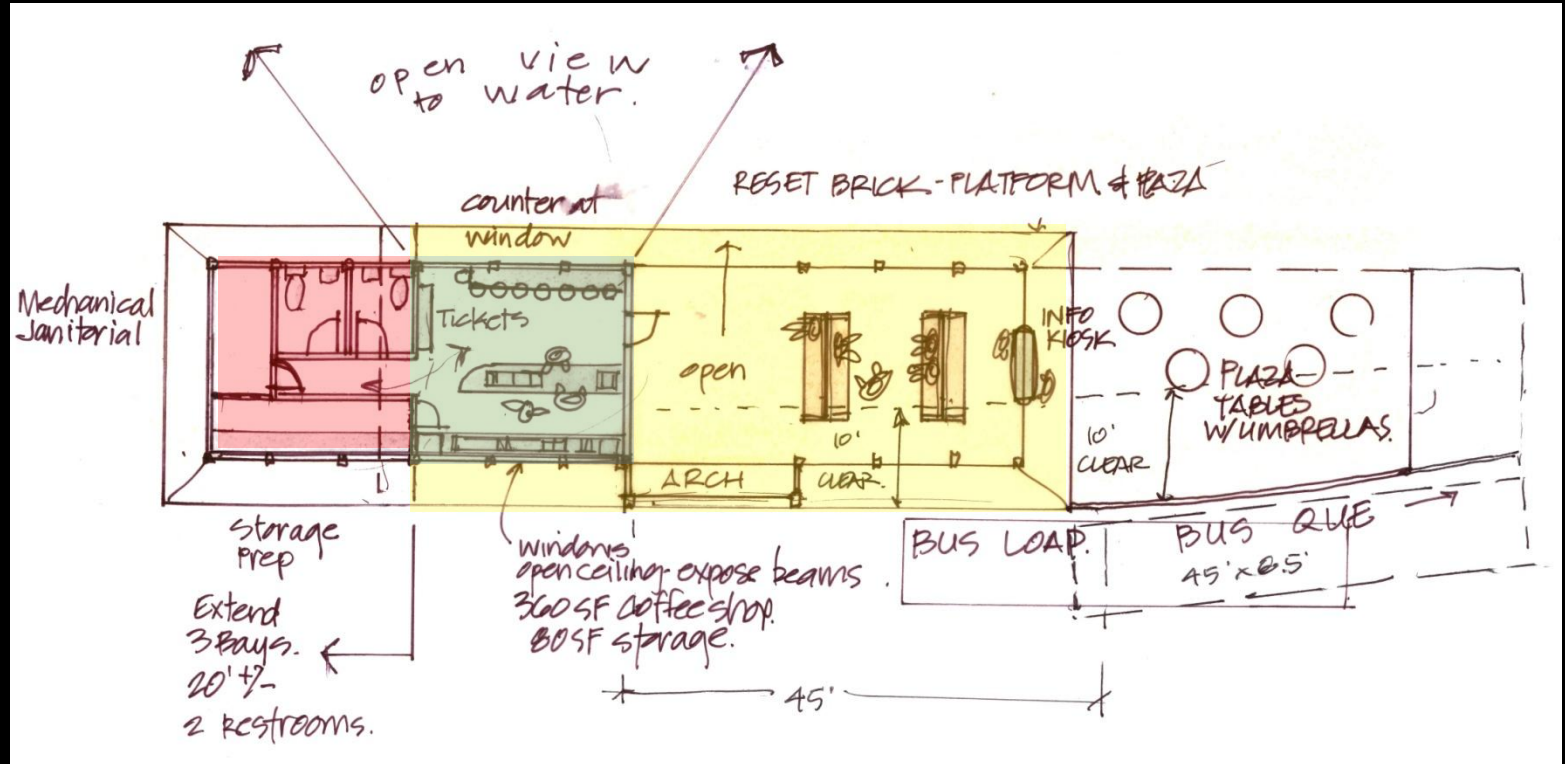
- Train Depot Renovation
 - *expand* Transportation Options
- Parking Needs
 - *balance with* Streetscape & Water Quality Improvements
- Waterfront Access
 - *balance with* Protection
- Shared Vision
 - *improve* both Public and Private Property



Opportunities

Renovate Train Depot *and* Expand Transportation Options

- Renovated Depot & Restrooms
- Coffee Shop / Café, Seating, Information Kiosk
- Bus Passenger Transfer Facility
 - GATRA OWL - Service to New Bedford
 - Peter Pan / Bonanza – P&B
- Bike Facilities







Opportunities

Explored changes to traffic direction -
roadway widths – Main Street & Merchant's
Way

- One-way or two-way ?
- Convert extra pavement to green space ?
- Calm traffic :
reduction in speed = increased safety
- Create short and highly visible pedestrian
cross-walks



Opportunities

Create a Vibrant Streetscape

- Improved parking, wayfinding signage & pedestrian scale lighting – underground utilities
- Sidewalks and small plazas - café's, street trees, landscaping, and furnishings
- Areas for festivals, farmer's markets, cart vendors, public art
- Green Infrastructure / stormwater infiltration to improve water quality
- Consolidated & Screened Dumpsters
- Separate Shared Use Path / Bikeway / Boardwalk











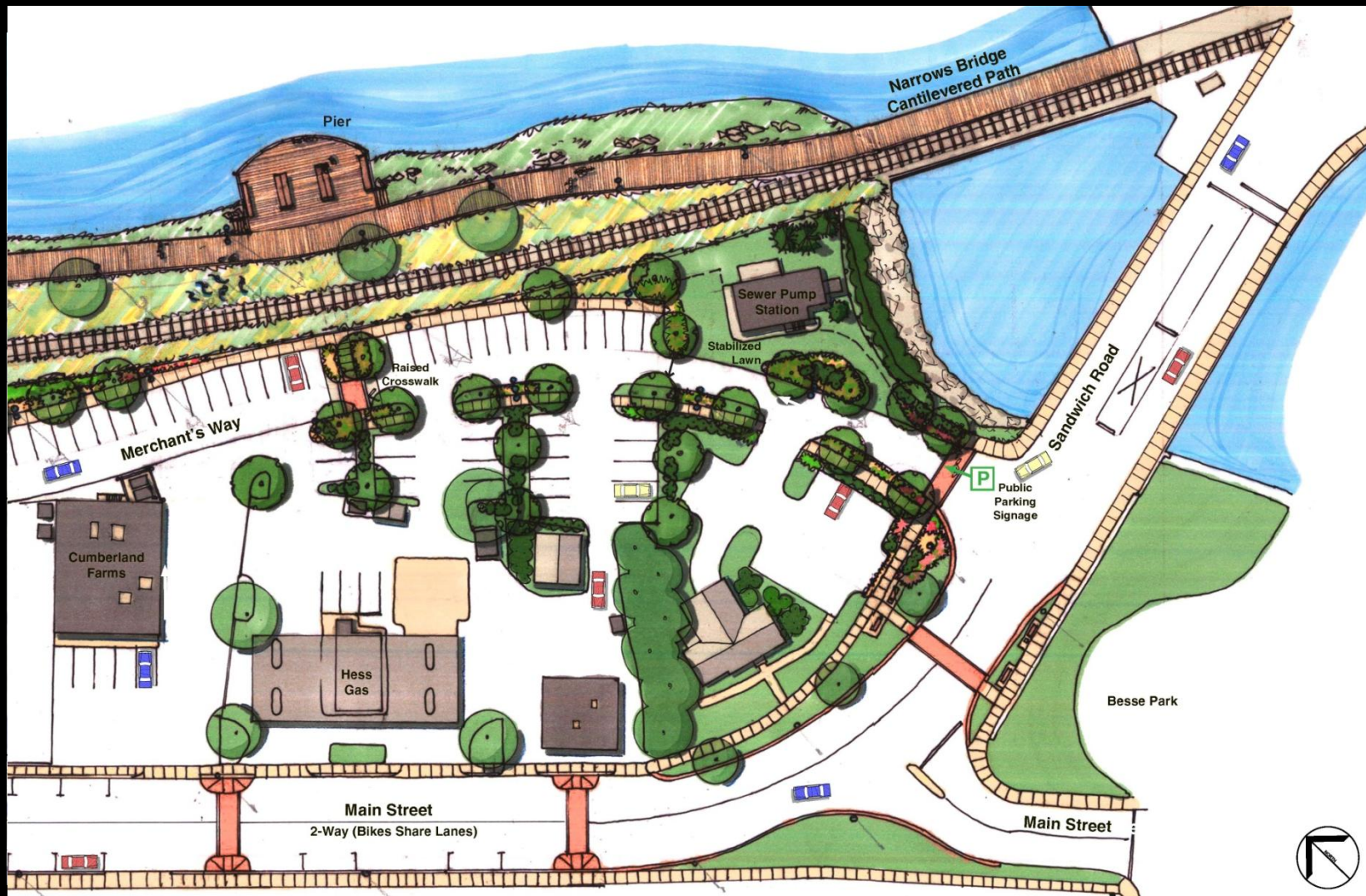


Opportunities

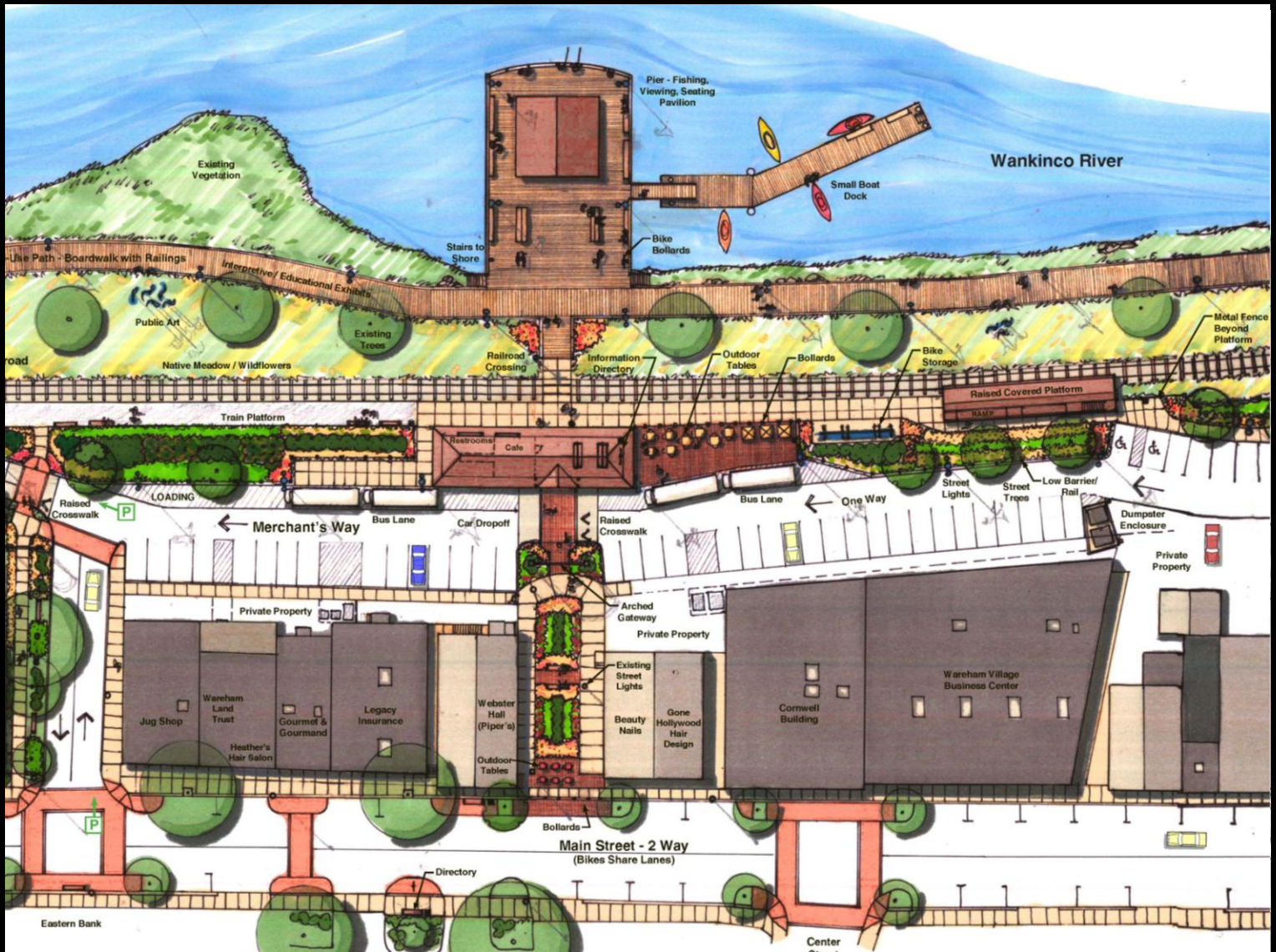
Access the Waterfront

- Create / License a Restricted Rail Crossing
- Develop a Shared Use Pathway / Boardwalk
- Create Seating Nodes and Viewing Areas
- Provide dock for canoes, kayaks, small boats
- Provide access for Blue Crab Harvesting, Fishing, Swan Boat Festival
- Enhance Views & Pedestrian Connections from Main Street









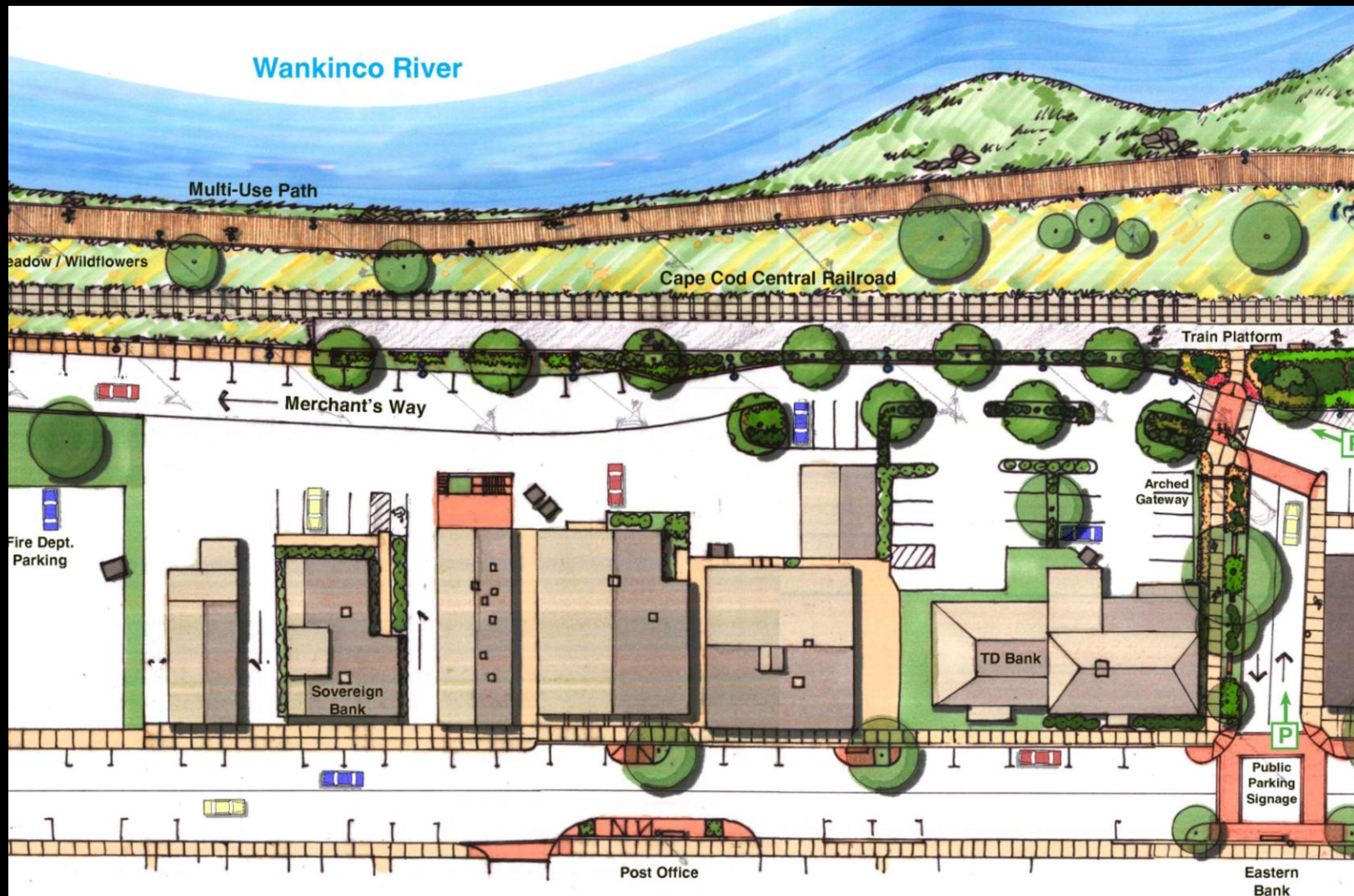


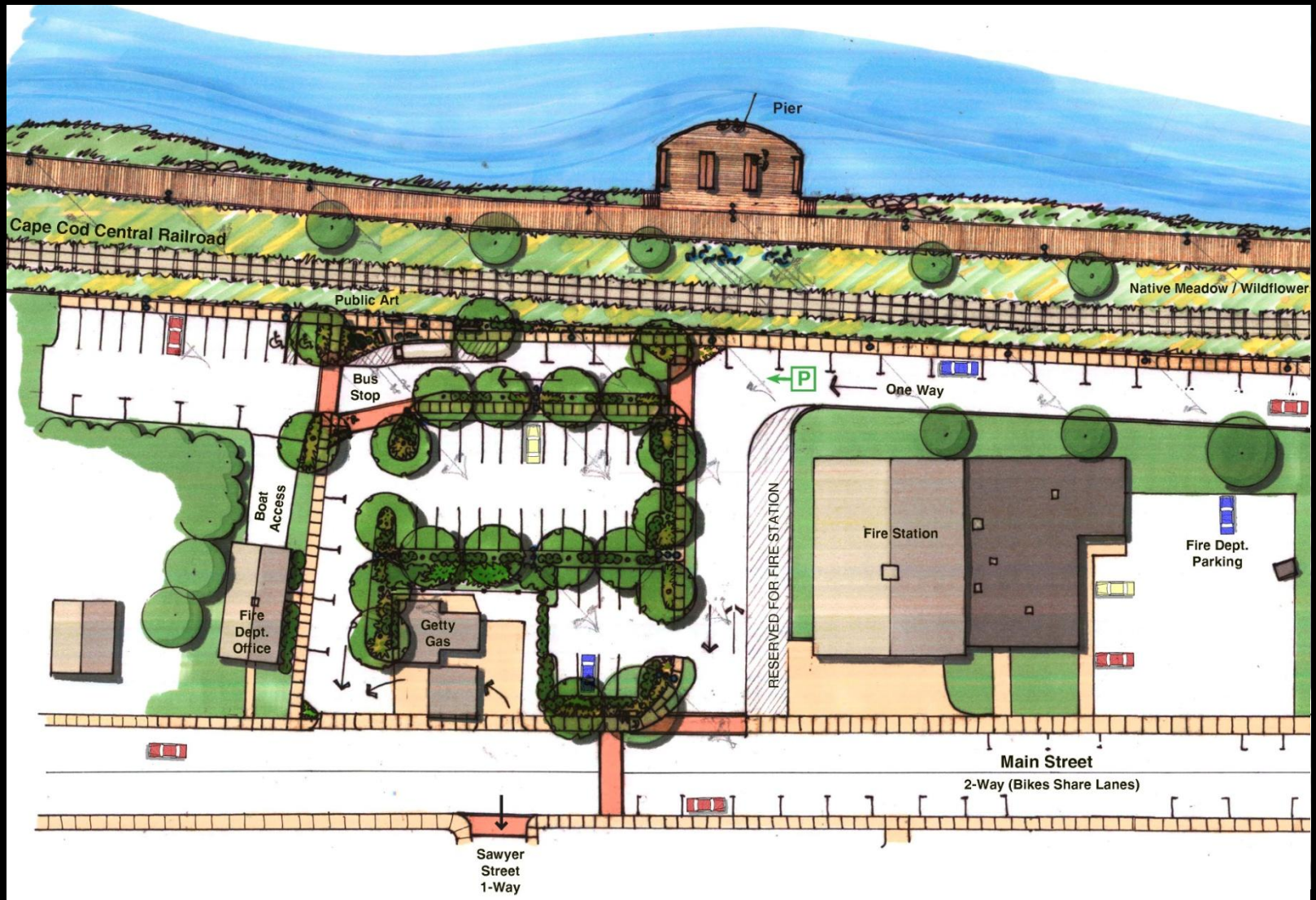






Wankinco River







Feedback

and

Next Steps