

March 9, 2023

Town of Wareham Zoning Board
C/O Ken Buckland, Director of Planning and Community Development
54 Marion Road
Wareham, MA 02571

Re: True Storage Facility
ZBA Case 4-23
2400 & 2402 Cranberry Highway
Wareham, MA

Dear Ken,

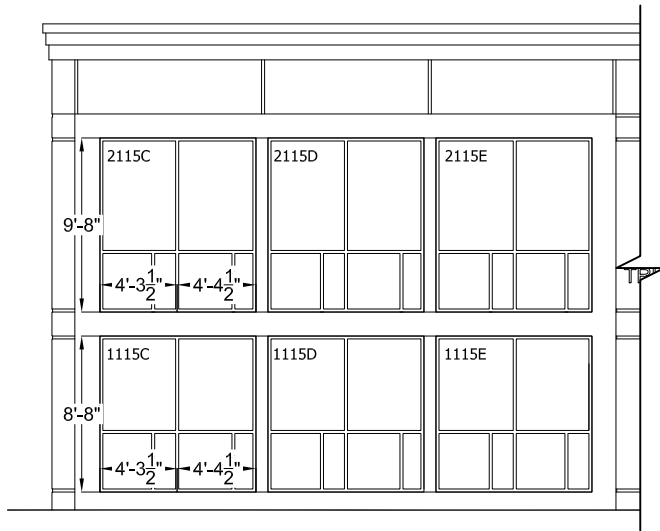
I am writing to respond to comment number 4 in the letter from the Initial Peer Review performed by Allen & Major dated February 15, 2023. This comment pertains to the building façade complying with Zoning By-Law, Article 750, subsection 752.12.

The façade of the proposed building that faces the public way has an area of approximately 6,915 SF, with approximately 1,369 SF of this area as glazing. This equates to 20% of the area of the façade being windows and entry doors, which exceeds the 15% required by the zoning by-law. Each storefront glazing system is composed of two window units, each measuring from approximately 4'-4" wide by 8'-8" high to 4'-4" wide by 9'-8" wide. Attached to this letter is a drawing which provides the dimensions for the windows along this elevation. The height of these window units exceeds the required 1.5 times with width. Also, all storage lockers that were previously accessible through this front façade have been updated to be accessed from the interior of the building, removing the overhead locker doors from the front of the building. Therefore, the proposed building is in compliance with zoning by-law, article 750, subsection 752.12.

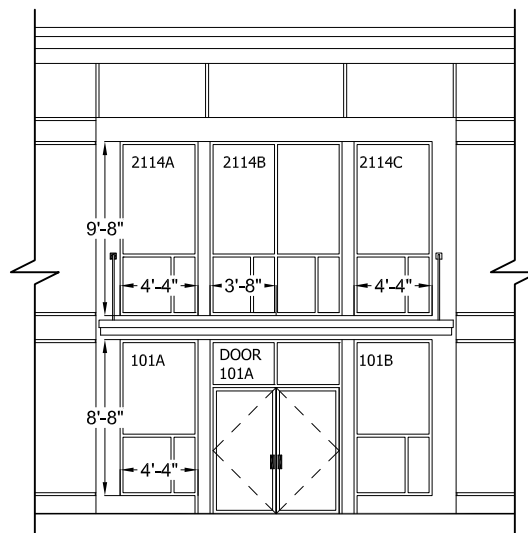
Sincerely,

Christopher Lewis
Director of Architecture and Design
True Storage
670 N. Commercial St.
Manchester, NH
P: 603.231.1936
E: clewis@bradysullivan.com

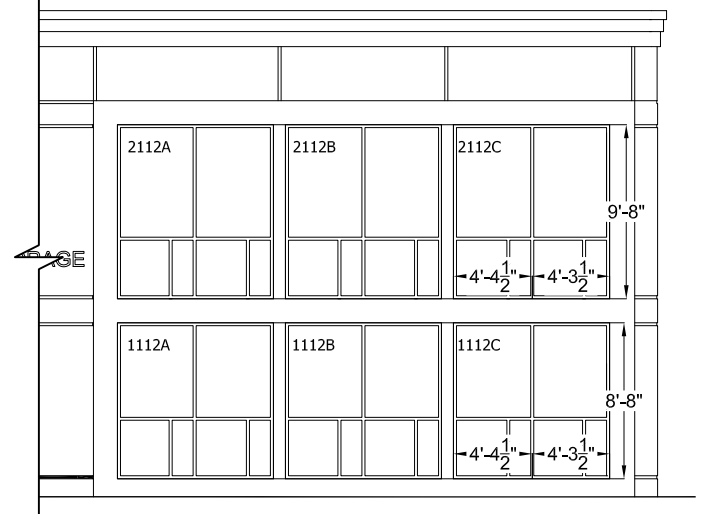




NORTHWEST FACADE



CENTER WEST FACADE



SOUTHWEST FACADE



670 N. COMMERCIAL ST.
MANCHESTER, NH 03101
P: 866.229.0498
F: 603.622.7342
WWW.TRUESTORAGE.COM

**TRUE
STORAGE
WAREHAM**
2400 & 2402
CRANBERRY HWY
WAREHAM, MA

WEST ELEVATION

Date: 3-9-23

Drawn by: MU

Checked by: CL

SK2-0

Scale: 3/32" = 1'0"