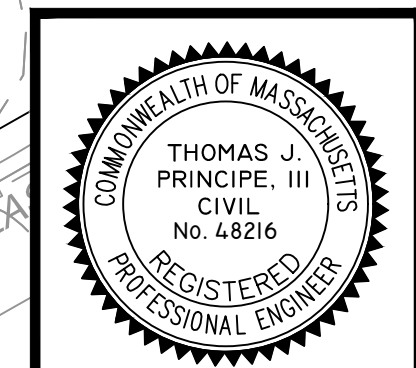


WATERSHED MAP - POST



**PRINCIPE COMPANY, INC.**  
 ENGINEERING DIVISION  
 PO BOX 298  
 TIVERTON, RI 02878  
 401.816.5385  
 PRINCIPLEENGINEERING@GMAIL.COM

REVISIONS				
No.	DATE	DRWN	CHKD	
1.	7-14-21	JAR	TJP	
2.	9-30-21	KAB	TJP	
3.	12-29-21	KAB	TJP	
4.	01-11-22	KAB	TJP	

MODIFICATION TO SPECIAL USE PERMIT & SITE PLAN APPROVAL & DEFINITIVE SUBDIVISION PLAN APPROVAL DEFINITIVE PLAN SUBMISSION for BAY POINTE CLUB MIXED USE DEVELOPMENT PHASE II & III in WAREHAM, MASSACHUSETTS

SCALE: 1"=40' SHEET NO: 2 OF 2  
 DRAWN BY: TJP DESIGN BY: TJP CHECKED BY: TJP  
 DATE: 5/26/21 PROJECT NO.: LD13-1 PH II/III