



ADDENDUM NO. 3 TO CONTRACT DOCUMENTS

Project	Equalization Basin No 3 and 4	Project No.	11206142
Owner	Town of Wareham, MA	Federal Project No.	
Contract No.	2020-001	Date	August 18, 2020

To All Contractors:

Contractors submitting proposals for the above-named project shall take note of the following changes, additions, deletions, clarifications, etc., in the Contract Documents, which shall become a part of and have precedence over anything contrarily shown or described in the Contract Documents, and all such shall be taken into consideration and be included in the Contractor's bid proposal.

Please see attached pages.

The return receipt requested with this communication is to be deemed evidence that the bidder has received this addendum and has followed the instructions outlined therein.



Marc Drainville, P.E., BCEE
 Marc R. Drainville, Principa



ITEM NO. 1.

- A. **DELETE** the first paragraph in its entirety and **REPLACE** with the following paragraph:

“Sealed Bids for General Contractors for the construction of the Equalization Basin No. 3 and 4 for the Town of Wareham, MA will be received by the Wareham Water Pollution Control Facility, 6 Tony’s Lane, Wareham, Massachusetts, Attn: Guy Campinha, Director of Water Pollution Control until 2:00 p.m. local time on Tuesday, August 25th, 2020 and at that place and time will be publicly opened and read aloud.

ITEM NO. 2.

Drawing 112-06142-G001 – VICINITY AND LOCATION MAPS AND DRAWING LIST

- A. In the drawing list **DELETE** “C006 SITE SECTIONS” and **REPLACE** with “C006 SITE SECTIONS AND PIPE PROFILES”

ITEM NO. 3.

Drawing 112-06142-G002 – ABBREVIATIONS, LEGENDS AND SYMBOLS

- A. Under Legend, **ADD** the following entry:

 Guiderail

- B. Under Legend, **ADD** the following entry:

 Guardrail

- C. Under General Notes **DELETE** NOTE 3 in its entirety and **REPLACE** with “ALL EXISTING FACILITY LOCATIONS AND ELEVATIONS SHOULD BE CONSIDERED APPROXIMATE AND ARE IN NEED OF FIELD VERIFICATIONS FOR ELEVATION AND LOCATION. CONTRACTOR SHALL PERFORM TEST PITS TO LOCATE EXISTING BURIED UTILITIES AT LOCATIONS CALLED OUT ON SITE PLANS AND AT ANY OTHER LOCATIONS WHERE EXISTING FACILITIES AND NEW FACILITIES CROSS EACH OTHER OR ARE WITHIN 2 FEET OF EACH OTHER PRIOR TO PURCHASING MATERIALS.”

ITEM NO. 4.

Drawing 112-06142-G004 – HYDRAULIC PROFILES I AND II

- A. In HYDRAULIC PROFILE – I (SECONDARY CLARIFIER TO EQUALIZATION BASINS 3 AND 4) **DELETE** the ‘12” DI’ pipe between Equalization Basin No 3 and Equalization Basin No 4 and **REPLACE** with ‘20” DI’ pipe.
- B. In HYDRAULIC PROFILE – II (EXISTING EQUALIZATION BASINS 1 AND 2 TO PROPOSED EQUALIZATION BASINS 3 AND 4) **DELETE** the “12” DI” pipe between Equalization Basin No 3 and Equalization Basin No 4 and **REPLACE** with “20” DI” pipe.



- C. **DELETE** table titled “LIST OF PIPING DESIGNATIONS” and **REPLACE** with:

LIST OF PIPING DESIGNATIONS	
PIPE DESIGNATION	PIPE DESCRIPTION
EQI	EQUALIZATION BASIN INFLUENT
EQE	EQUALIZATION BASIN EFFLUENT
EQO	EQUALIZATION BASIN OVERFLOW
SCE	SECONDARY CLARIFIER EFFLUENT
DFI	DENITRIFICATION FILTER INFLUENT
EFW	EFFLUENT FLUSHING WATER
D, DRN	DRAIN
S	SANITARY SEWER
G	NATURAL GAS
FSE	FINAL SETTLING TANK EFFLUENT
FIL	VACUUM FILTER FILTRATE

ITEM NO. 5.

Drawing 112-06142-G005 – HYDRAULIC PROFILE III

- A. **DELETE** table titled “VALVE DESIGNATION TABLE” in its entirety.
- B. **DELETE** table titled “LIST OF PIPING DESIGNATIONS” and **REPLACE** with:

LIST OF PIPING DESIGNATIONS	
PIPE DESIGNATION	PIPE DESCRIPTION
EQI	EQUALIZATION BASIN INFLUENT
EQE	EQUALIZATION BASIN EFFLUENT
EQO	EQUALIZATION BASIN OVERFLOW
SCE	SECONDARY CLARIFIER EFFLUENT
DFI	DENITRIFICATION FILTER INFLUENT
EFW	EFFLUENT FLUSHING WATER
D, DRN	DRAIN
S	SANITARY SEWER
G	NATURAL GAS
FSE	FINAL SETTLING TANK EFFLUENT
FIL	VACUUM FILTER FILTRATE



ITEM NO. 6.

Drawing 112-06142-C002 - SITE PLAN - PROPOSED

- A. **ADD** Figure 1, "ADD3.C002.01".
- B. Under Legend, **ADD** the following entry:

 Guiderail

- C. Under Legend, **ADD** the following entry:

 Guardrail

ITEM NO. 7.

Drawing 112-06142-C003 – LAYOUT PLAN

- A. **ADD** Figure 2, "ADD3.C003.01".
- B. **ADD** Figure 3, "ADD3.C003.02".
- C. **ADD** two bollards, one centered on either side of the ends of the walking path between Equalization Basin No 3 and Equalization Basin No 4 per Figure ADD3.C003.02.
- D. **ADD** Note "ROAD B SHALL BE GRAVEL, NEW PORTION OF ROAD A SHALL BE GRAVEL, DISTURBED AREAS OF EXISTING PAVED ROAD A AND ROAD C SHALL BE RETURNED TO PREVIOUS CONDITION AND PAVED."

ITEM NO. 8.

Drawing 112-06142-C004 – GRADING PLAN

- A. **ADD** Figure 4, "ADD3.C004.01".
- B. **ADD** Figure 5, "ADD3.C004.02".
- C. **ADD** two bollards, one centered on either side of the ends of the walking path between Equalization Basin No 3 and Equalization Basin No 4 per Figure ADD3.C004.01.
- D. **DELETE** "TIMBER GUIDERAIL (TYP)" and **REPLACE** with "WOOD GUIDERAIL (TYP)"
- E. **DELETE** "TOE OF SLOPE EL. 24.0" and **REPLACE** with "TOP OF SLOPE EL. 24.0"

ITEM NO. 9.

Drawing 112-06142-C005 – YARD PIPING PLAN

- A. **ADD** Figure 6, "ADD3.C005.01".
- B. **ADD** Figure 7, "ADD3.C005.02".
- C. **ADD** Figure 8, "ADD3.C005.03".
- D. **DELETE** callout pointing to 20" DI, SCE "PIPE ALIGNMENT PROFILE 'E'" and **REPLACE** with "PIPE ALIGNMENT PROFILE 'F'"



E. **DELETE** table “LIST OF PIPING DESIGNATIONS” and **REPLACE** with:

LIST OF PIPING DESIGNATIONS	
PIPE DESIGNATION	PIPE DESCRIPTION
EQI	EQUALIZATION BASIN INFLUENT
EQE	EQUALIZATION BASIN EFFLUENT
EQO	EQUALIZATION BASIN OVERFLOW
SCE	SECONDARY CLARIFIER EFFLUENT
DFI	DENITRIFICATION FILTER INFLUENT
EFW	EFFLUENT FLUSHING WATER
D, DRN	DRAIN
S	SANITARY SEWER
G	NATURAL GAS
FSE	FINAL SETTLING TANK EFFLUENT
FIL	VACUUM FILTER FILTRATE

ITEM NO. 10.

Drawing 112-06142-C006 – SITE SECTIONS

- A. **DELETE** title “SITE SECTIONS” and **REPLACE** with “SITE SECTIONS AND PIPE PROFILES”
- B. **ADD** Figure No. 9, “ADD3.C006.01.”
- C. **ADD** Figure No. 11, “ADD3.C006.02.”
- D. **ADD** Figure No. 12, “ADD3.C006.03.”
- E. **ADD** Figure No. 13, “ADD3.C006.04.”
- F. **ADD** Figure No. 14, “ADD3.C006.05.”
- G. **ADD** Figure No. 15, “ADD3.C006.06.”
- H. **ADD** Figure No. 16, “ADD3.C006.07.”

ITEM NO. 11.

Drawing 112-06142-C007 – DISTRIBUTION BOXES 1 AND 2 AND EQUALIZATION SUMP PLANS AND SECTIONS

- A. DISTRIBUTION BOX NO. 1 PLAN:
 - i. **DELETE** the callout ‘GUIDERAIL REQUIRED WHEREVER DISTANCE TO GRADE IS GREATER THAN OR EQUAL TO 18”’.
 - ii. **DELETE** all guardrail shown.
 - iii. **DELETE** 12’ dimension referring to internal length of box **REPLACE** with 13’ dimension.



- B. DISTRIBUTION BOX NO. 2 PLAN:
 - i. **ADD** Figure No.10, "ADD3.C007.01".
 - ii. **ADD** note "NOTE: GUARDRAIL REQUIRED WHEREVER DISTANCE TO GRADE IS GREATER THAN OR EQUAL TO 18".
- C. DISTRIBUTION BOX NO. 2 SECTION **ADD** note "NOTE: GUARDRAIL NOT SHOWN FOR CLARITY"
- D. EQUALIZATION SUMP – PLAN **DELETE** callout "TO PUMP TRUCK OR TRAILER MOUNTED PUMP" and **REPLACE** with "TO SUMP CLEANOUT PUMP CONNECTION DETAIL 1 ON D004"
- E. **ADD** note "SEE SECTION 11291 SLIDE GATES FOR SLIDE GATE SIZING AND INFORMATION"

ITEM NO. 12.

Drawing 112-06142-D001 – MISCELLANEOUS DETAILS – I

- A. TYPICAL BERM VENT: **DELETE** "GSE HDPE GEOMEMBRANE FLAP" and **REPLACE** with "HDPE GEOMEMBRANE FLAP"
- B. TYPICAL BERM VENT: **DELETE** "GSE HDPE GEOMEMBRANE" and **REPLACE** with "HDPE GEOMEMBRANE"
- C. WATER CANNON DETAIL: **ADD** the following:

"NOTES:

1. SHALL BE DIXON, AKRON BRASS COMPANY, ELKHART BRASS, OR EQUAL.
2. NOZZLE OPENNING SHALL BE 2½ INCH DIAMETER WITH ADDITIONAL ATTACHABLE NOZZLE FROM 2½ INCH TO 1½ INCH.
3. HORIZONTAL TRAVEL SHALL BE 360 DEGREES VERTICAL TRAVEL SHALL BE A MINIMUM OF 120 DEGREES, 60 DEGREES BELOW HORIZONTAL AND 60 DEGREES ABOVE HORIZONTAL.
4. WATER CANNON SHALL BE RATED TO HANDLE 150 PSI PRESSURE."

ITEM NO. 13.

Drawing 112-06142-D003 – MISCELLANEOUS DETAILS – III

- A. **DELETE** STAIR FRAMING NOTES.
- B. EXTERIOR CONCRETE STAIR DETAIL **ADD** note: "CONCRETE SHALL BE MIX E"

ITEM NO. 14.

Drawing 112-06142-D004 – MISCELLANEOUS DETAILS – IV

- A. TYPICAL TRENCH DETAIL **DELETE** "PROCESSED SAND ENVELOPE" and **REPLACE** with "TYPE C-1 SAND ENVELOPE"
- B. TYPICAL TRENCH DETAIL **DELETE** "WARNING TAPE "WATER"" and **REPLACE** with "WARNING TAPE"



- C. SUMP CLEANOUT PUMP CONNECTION DETAIL **DELETE** callout '6" DI PIPE' and **REPLACE** with '8" DI PIPE'
- D. SUMP CLEANOUT PUMP CONNECTION DETAIL **DELETE** callout '6" DI 90° BEND' and **REPLACE** with '8" DI 90° BEND'

ITEM NO. 15.

Table of Contents

- A. **ADD** "DIVISION 10 SPECIALTIES
10441 SIGNS"

ITEM NO. 16.

Section 01540 Temporary Pumping

- A. **Delete** section 1.02 General Part B. in its entirety **Replace** with:

"Contractor shall provide temporary pumping as needed, including the following use:

1. From the three secondary clarifier troughs to denitrification filters influent channel. Pumps shall be capable of pumping flows to match the treatment system flows (2019 average flows were 1.18 mgd, design secondary peak is 2.0 mgd)."

ITEM NO. 17.

Section 02222 Excavating

- A. For Section 0222 Excavating Part 1 3.04 DISPOSAL OF MATERIAL B. **ADD** "Surplus excavated material shall be disposed of in the depression 200 feet west of Equalization Basin 1. Owner shall designate a Limit of Work for Contractor access."

ITEM NO. 18.

Section 10441

- A. **ADD** SECTION 10441 SIGNS



ITEM NO. 19.

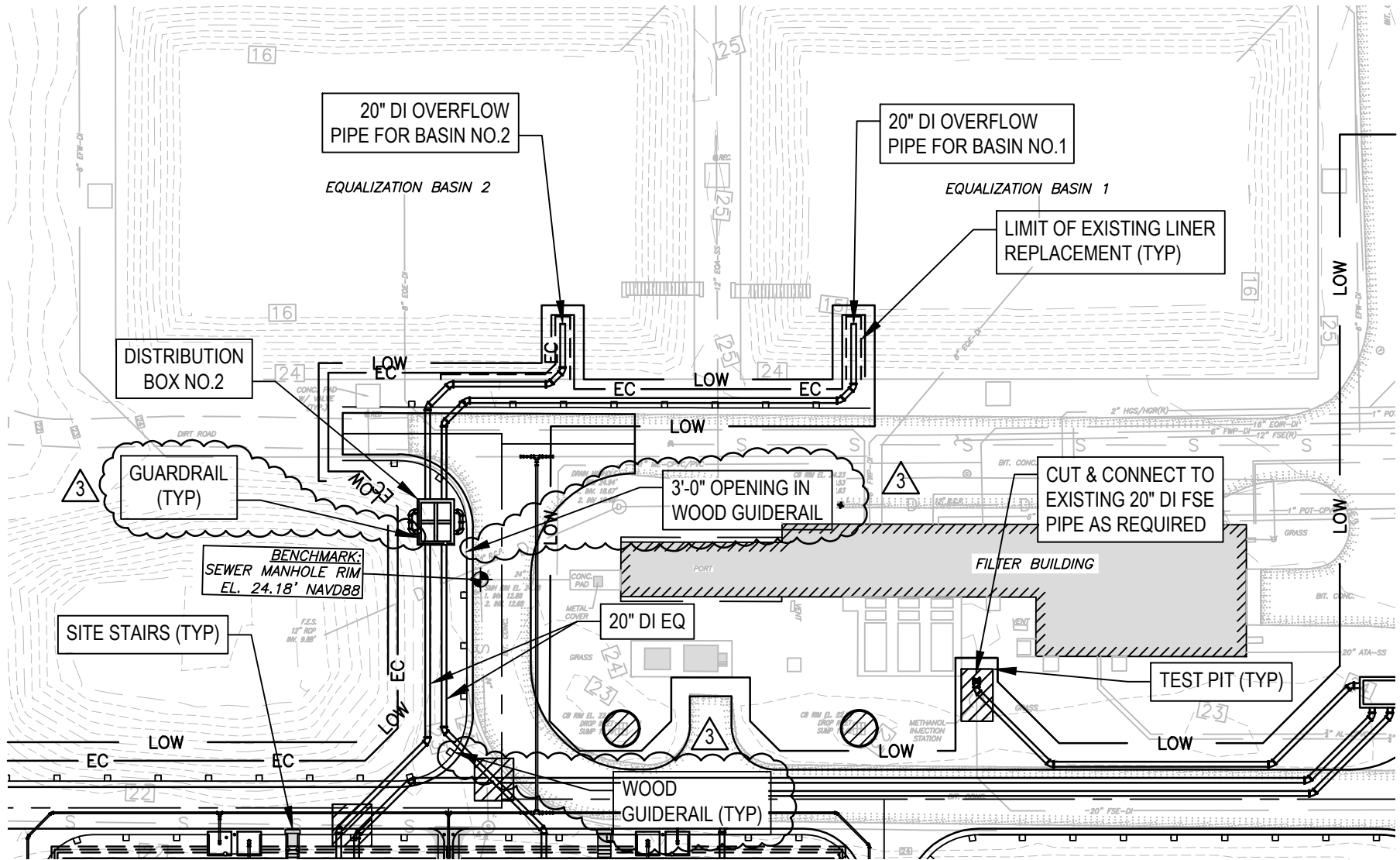
Section 11291 SLIDE GATES

A. **DELETE** TABLE 1 and **REPLACE** with table below:

GATE NO.	LOCATION	SIZE OF OPENING (w x h) (in)	SLIDE HEIGHT (in)	SLIDE WIDTH (in)	MOUNTING TYPE	SELF-CONTAINED	GATE MATERIAL	OPERATOR	BOTTOM OF GATE ELEVATION ¹		NOTES
									FULLY RAISED	FULLY LOWERED	
DB1-SG-01	Distribution Box 1	20 DIA	24	24	B	No	Aluminum	Manual, hand crank	18.8	16.8	1, 2, 4, 5, 6
DB1-SG-02	Distribution Box 1	36 x 36	36	36	B	No	Aluminum	Manual, hand crank	19.5	16.5	1, 2, 4, 5, 6
DB1-SG-03	Distribution Box 1	20 DIA	24	24	B	No	Aluminum	Manual, hand crank	18.8	16.8	1, 2, 4, 5, 6
DB1-SG-04	Distribution Box 1	20 DIA	24	24	B	No	Aluminum	Manual, hand crank	18.8	16.8	1, 2, 4, 5, 6
DB1-WG-01	Distribution Box 1	72 x 72	72	72	D	Yes	Aluminum	Manual, hand crank	21	16	1, 2, 3, 4, 6
DB2-SG-01	Distribution Box 2	20 DIA	24	24	B	No	Aluminum	Manual, hand crank	19.5	17.5	1, 2, 4, 5, 6
DB2-SG-02	Distribution Box 2	20 DIA	24	24	B	No	Aluminum	Manual, hand crank	19.5	17.5	1, 2, 4, 5, 6
DB2-SG-03	Distribution Box 2	12 DIA	12	12	B	No	Aluminum	Manual, hand crank	19.5	17.5	1, 2, 4, 5, 6
DB2-SG-04	Distribution Box 2	12 DIA	12	12	B	No	Aluminum	Manual, hand crank	19.5	17.5	1, 2, 4, 5, 6
DB2-SG-05	Distribution Box 2	24 x 24	24	24	B	No	Aluminum	Manual, hand crank	19.5	17.5	1, 2, 4, 5, 6
DB2-WG-01	Distribution Box 2	36 x 60	60	36	D	Yes	Aluminum	Manual, hand crank	22	17	1, 2, 3, 4, 6
DB2-WG-02	Distribution Box 2	36 x 60	60	36	D	Yes	Aluminum	Manual, hand crank	22	17	1, 2, 3, 4, 6

- (1) All elevations listed are relative to the NAVD 88 datum. Contractor shall field verify all elevations.
 (2) Contractor is to field-verify all widths, depths, openings, and conditions for new gate.
 (3) Provide flush side and invert seal.
 (4) Bottom elevation of gate to match grouted floor.
 (5) Provide flush side and invert seal. Provide top seal.
 (6) All gate operators shall have a side accessible hand crank, no gate shall have a top operated hand wheel.

Attachments



3 ADDENDUM NO 3

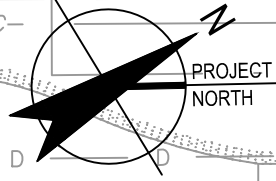
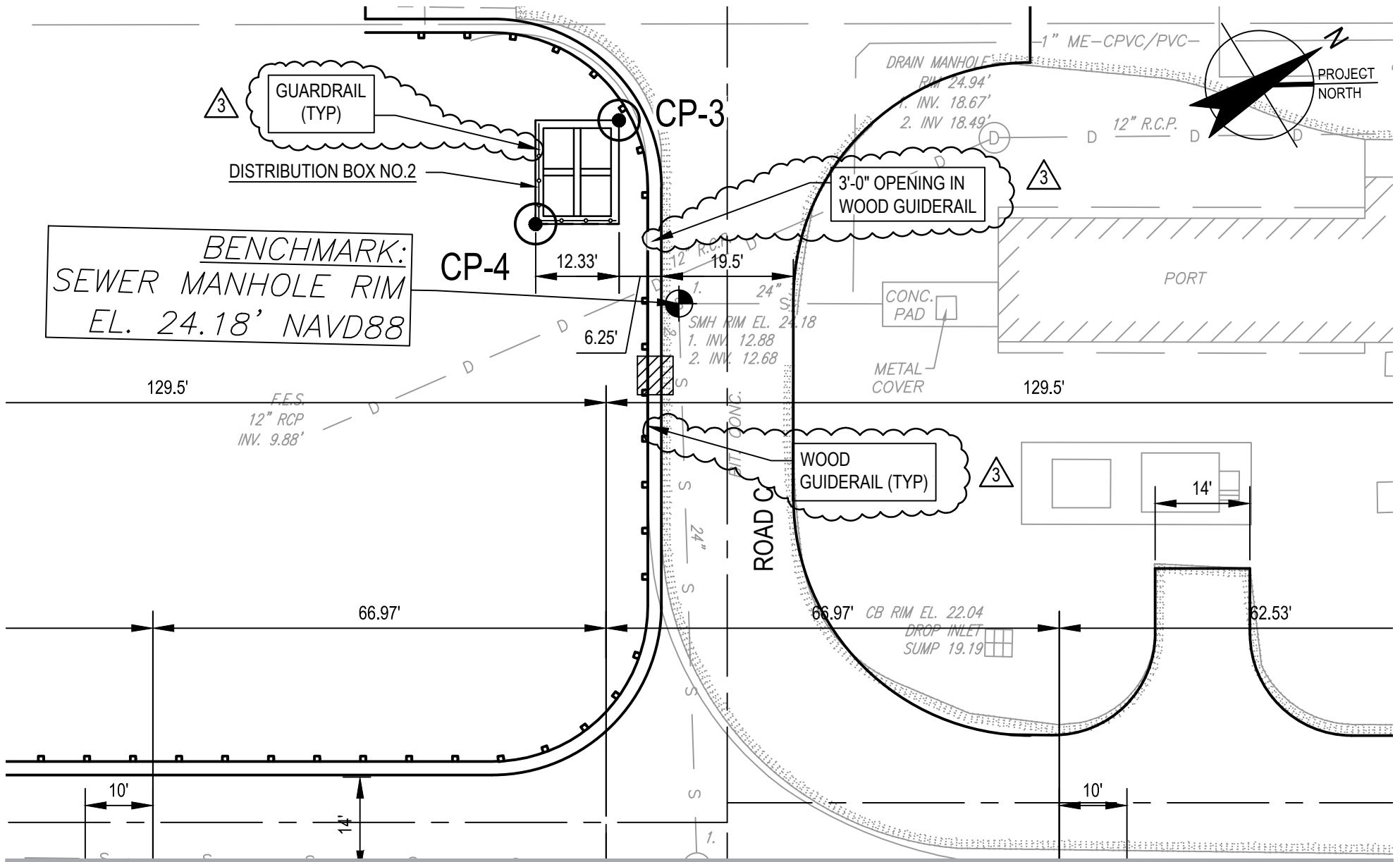


TOWN OF WAREHAM, MASSACHUSETTS
EQUALIZATION BASIN NO 3 AND 4

Project No. 11206142
Report No.
Date 8/07/2020

ADDENDUM NO 3
ADD3.C002.01

FIGURE 1



BENCHMARK:
SEWER MANHOLE RIM
EL. 24.18' NAVD88

3 ADDENDUM NO 3

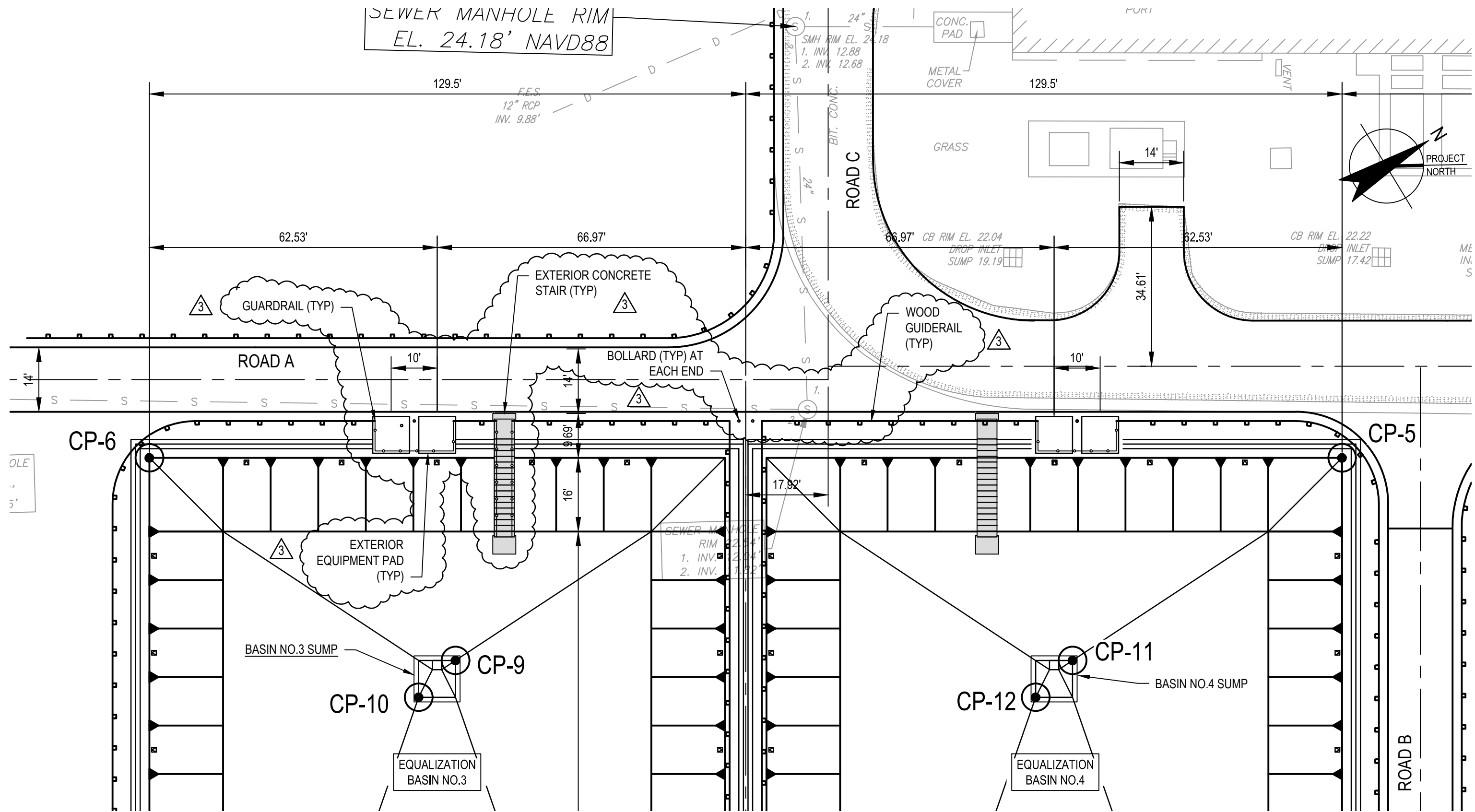


TOWN OF WAREHAM, MASSACHUSETTS
EQUALIZATION BASIN NO 3 AND 4

Project No. 11206142
Report No.
Date 8/07/2020

ADDENDUM NO 3
ADD3.C003.01

FIGURE 2



3 ADDENDUM NO 3

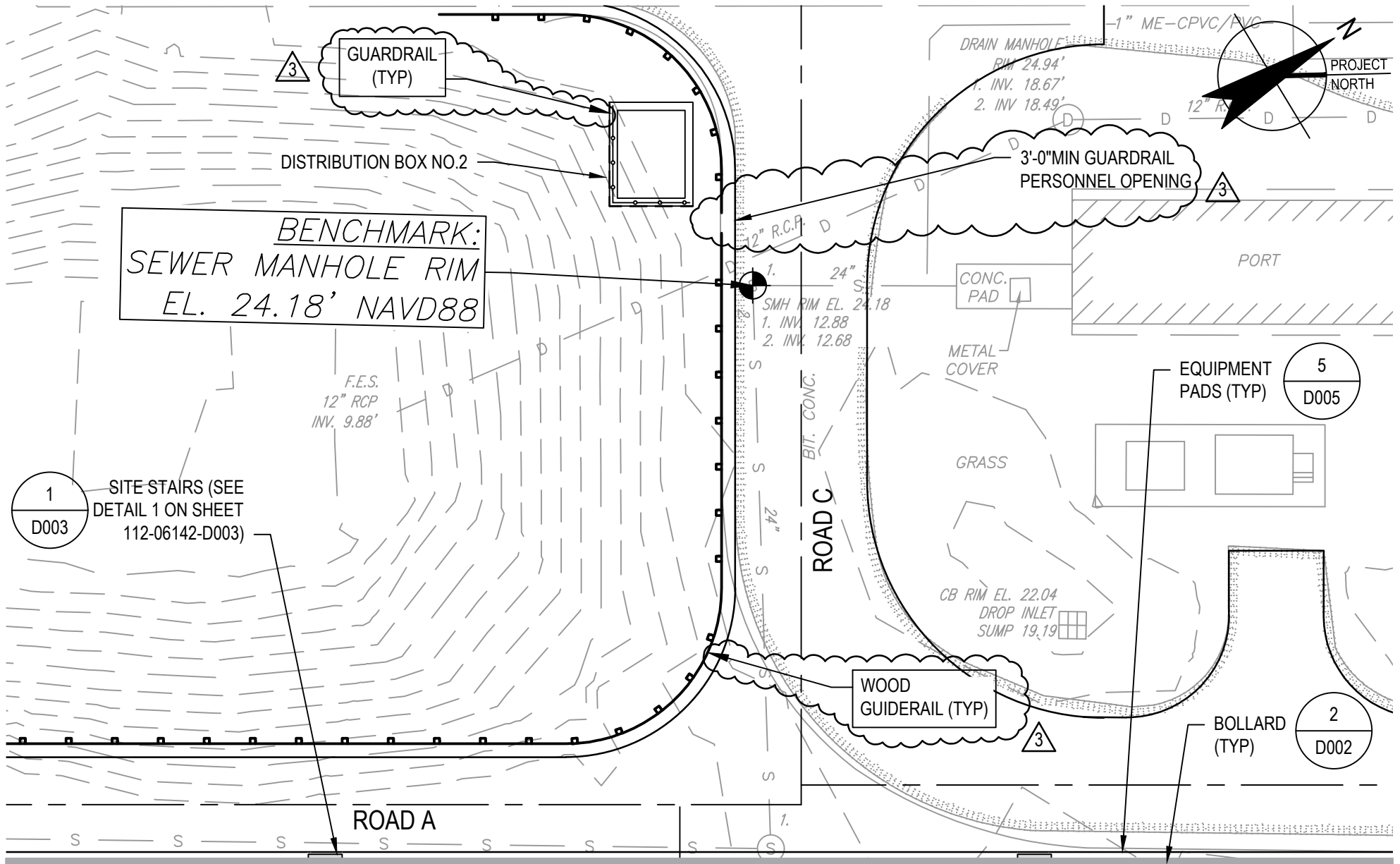


TOWN OF WAREHAM, MASSACHUSETTS
EQUALIZATION BASINS NO 3 & 4

ADDENDUM NO 3
ADD3.C003.02

Project No. 112-06142
Report No.
Date 8/07/2020

FIGURE 3



3 ADDENDUM NO 2

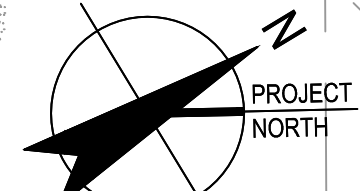
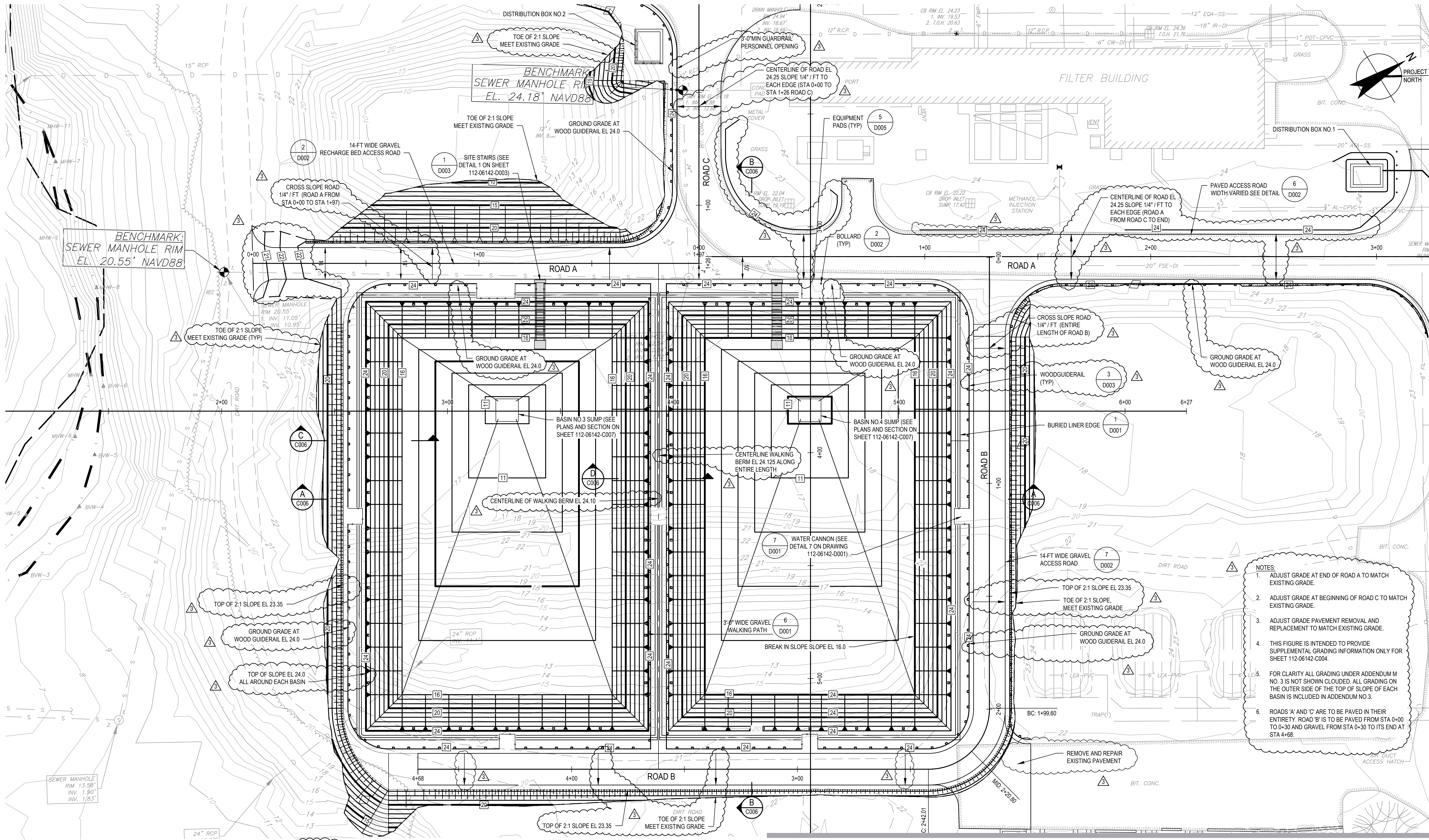


TOWN OF WAREHAM, MASSACHUSETTS
EQUALIZATION BASIN NO 3 AND 4

Project No. 11206142
Report No.
Date 8/07/2020

ADDENDUM NO 3
ADD3.C004.01

FIGURE 4



- NOTES:**
1. ADJUST GRADE AT END OF ROAD A TO MATCH EXISTING GRADE.
 2. ADJUST GRADE AT BEGINNING OF ROAD C TO MATCH EXISTING GRADE.
 3. ADJUST GRADE PAVEMENT REMOVAL AND REPLACEMENT TO MATCH EXISTING GRADE.
 4. THIS FIGURE IS INTENDED TO PROVIDE SUPPLEMENTAL GRADING INFORMATION ONLY FOR SHEET 112-06142-C004.
 5. FOR CLARITY ALL GRADING UNDER ADDENDUM M NO. 3 IS NOT SHOWN CLOUDED. ALL GRADING ON THE OUTER SIDE OF THE TOP OF SLOPE OF EACH BASIN IS INCLUDED IN ADDENDUM NO.3.
 6. ROADS 'A' AND 'C' ARE TO BE PAVED IN THEIR ENTIRETY. ROAD 'B' IS TO BE PAVED FROM STA 0+00 TO 0+30 AND GRAVEL FROM STA 0+30 TO ITS END AT STA 4+68.

- LEGEND**
- CROSS SLOPE ROAD 1/4" / FT ACROSS ENTIRE WIDTH
 - ↔ CROWN SLOPE ROAD 1/4" / FT FROM CENTERLINE TO EACH EDGE
 - - - TOE OF SLOPE / MEET EXISTING GRADE

ADDENDUM NO 3

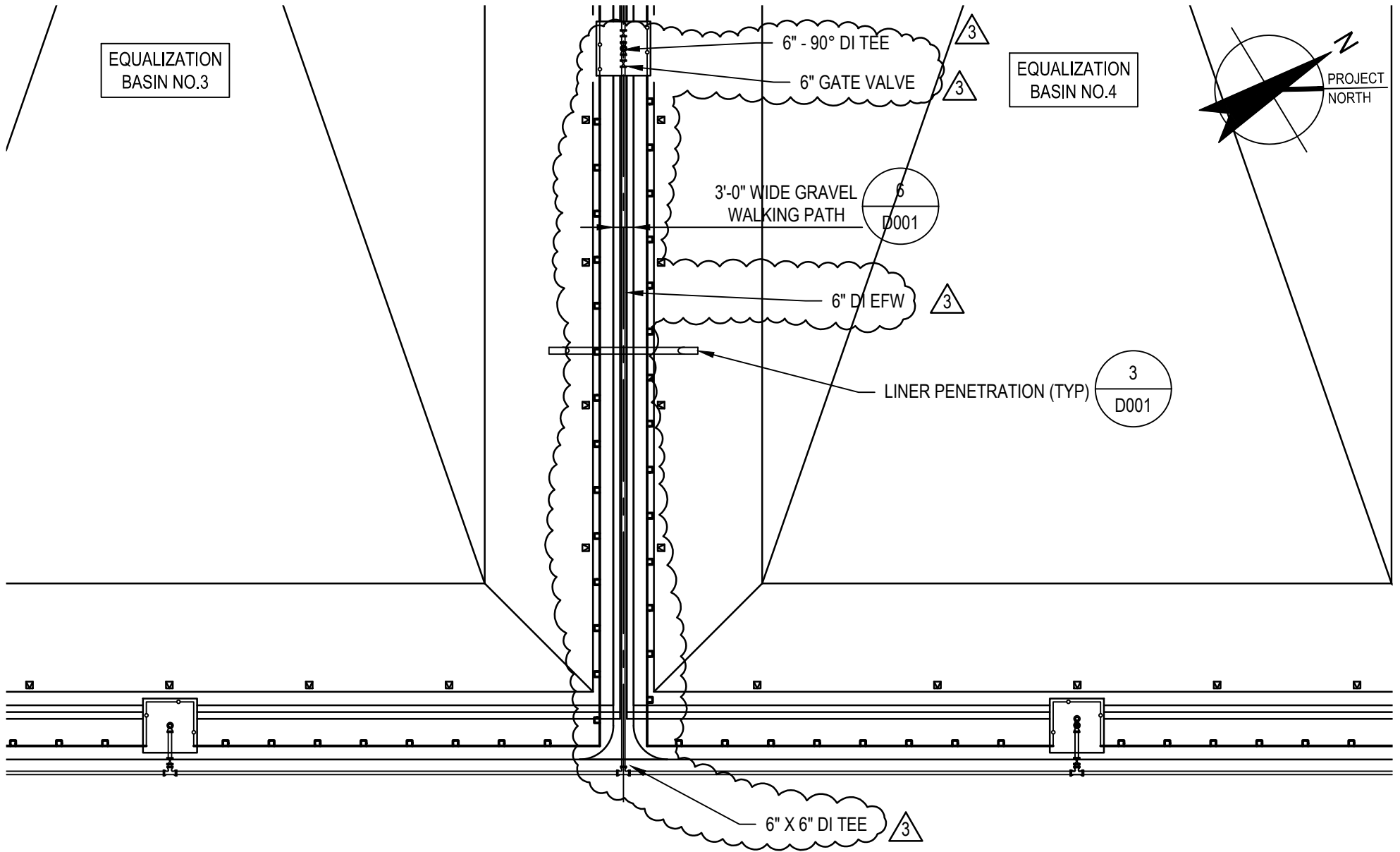


TOWN OF WAREHAM, MASSACHUSETTS
EQUALIZATION BASINS NO.3 & NO. 4

**SUPPLEMENTAL GRADING
ADDENDUM NO.3
ADD3.C004.02**

Project No. 112-06142
Report No.
Date 8/07/2020

FIGURE 5



3 ADDENDUM NO 3

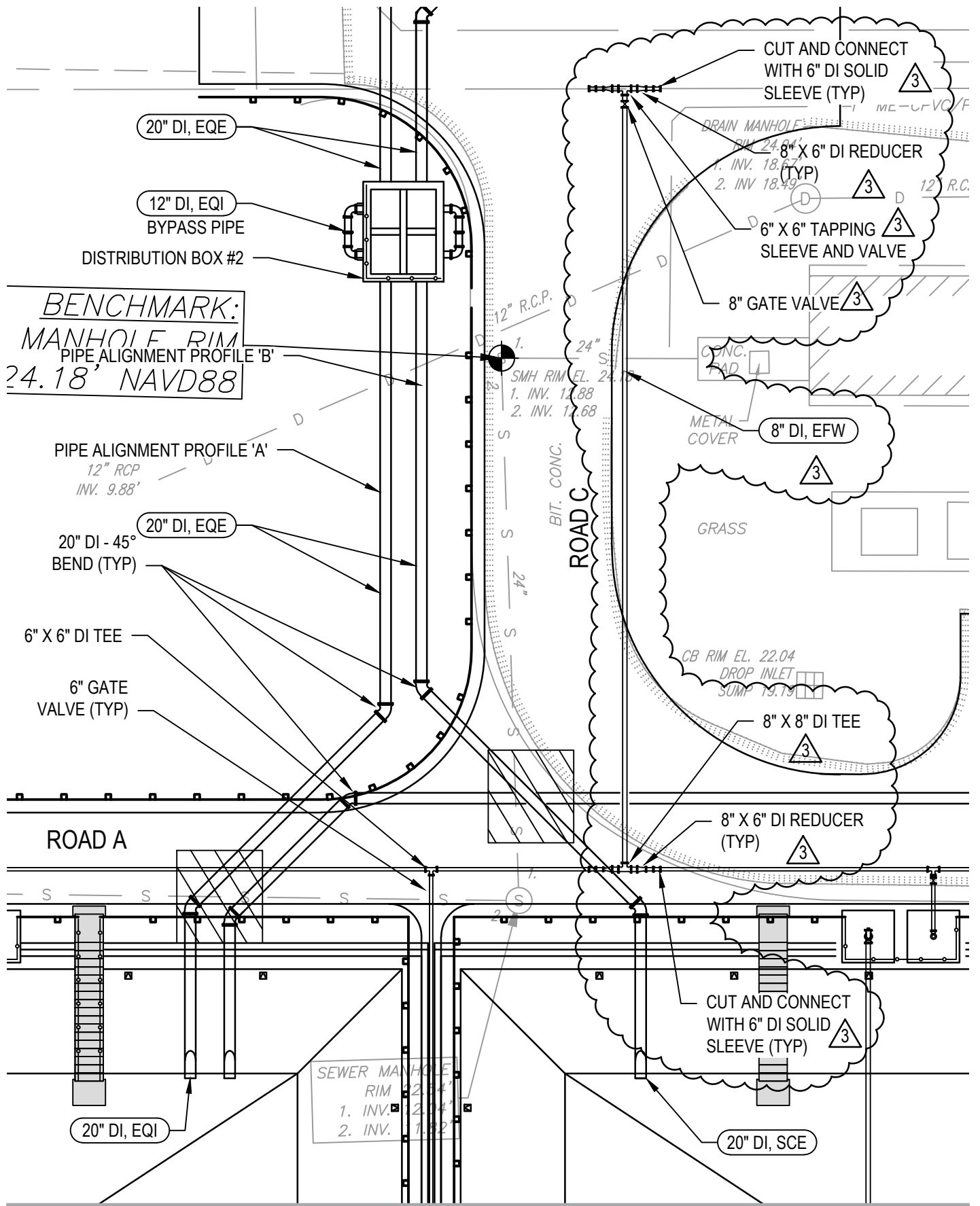


TOWN OF WAREHAM, MASSACHUSETTS
EQUALIZATION BASIN NO 3 AND 4

ADDENDUM NO.3
ADD3.C005.01

Project No. 11206142
Report No.
Date 8/07/2020

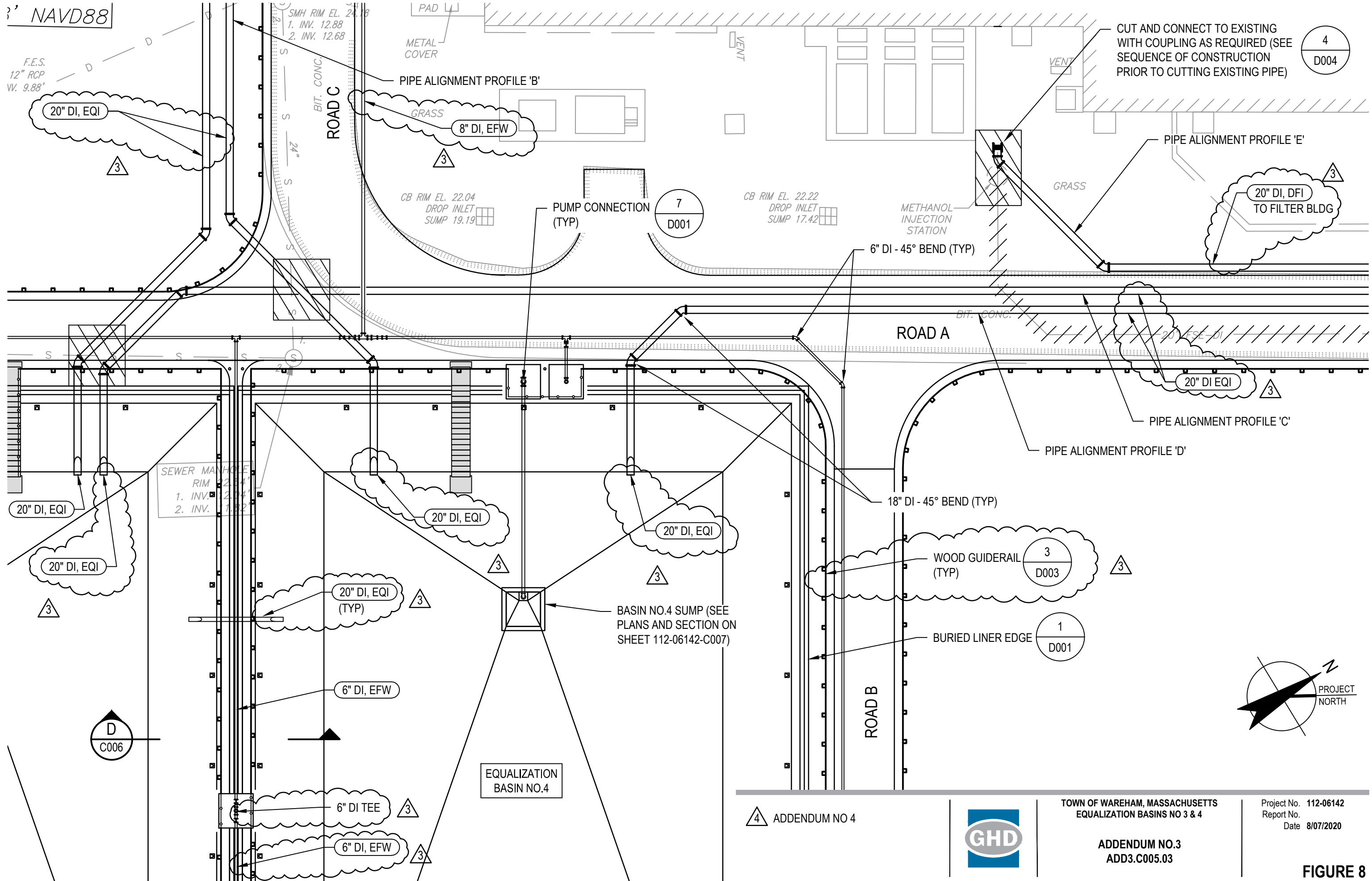
FIGURE 6



<p>ADDENDUM NO 3</p> 	<p>TOWN OF WAREHAM, MASSACHUSETTS EQUALIZATION BASINS NO 3 & 4</p> <p>ADDENDUM NO.3 ADD3.C005.02</p>	<p>Project No. 112-06142 Report No. Date 8/07/2020</p> <p>FIGURE 7</p>
--	--	---

3' NAVD88

F.E.S.
12" RCP
W. 9.88'



CUT AND CONNECT TO EXISTING WITH COUPLING AS REQUIRED (SEE SEQUENCE OF CONSTRUCTION PRIOR TO CUTTING EXISTING PIPE)

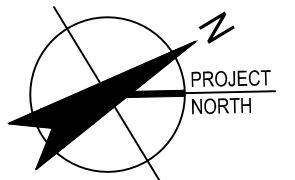
4
D004

7
D001

3
D003

1
D001

D
C006



4 ADDENDUM NO 4

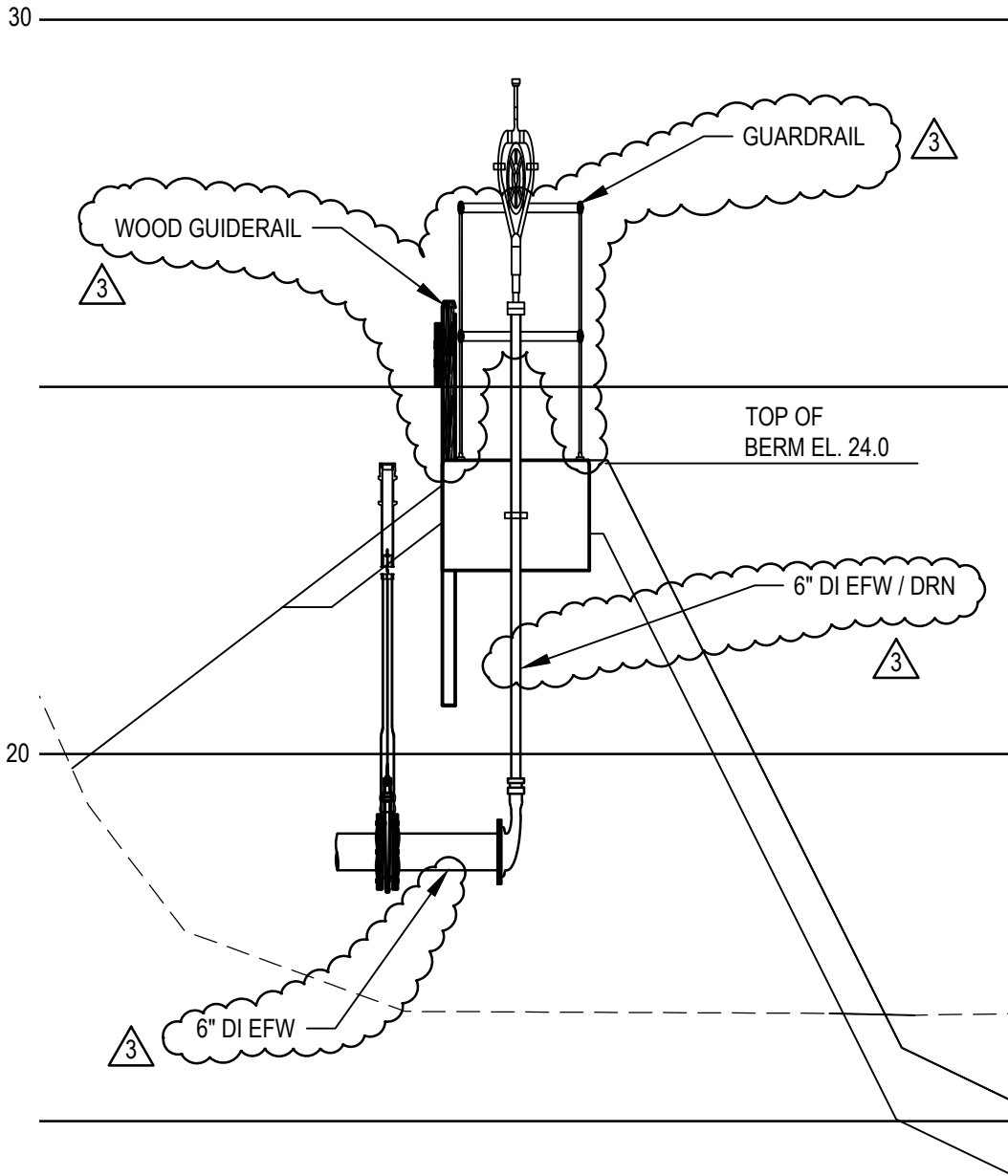


TOWN OF WAREHAM, MASSACHUSETTS
EQUALIZATION BASINS NO 3 & 4

ADDENDUM NO.3
ADD3.C005.03

Project No. 112-06142
Report No.
Date 8/07/2020

FIGURE 8



A SECTION
C006 SCALE :1"=10'

3 ADDENDUM NO 3

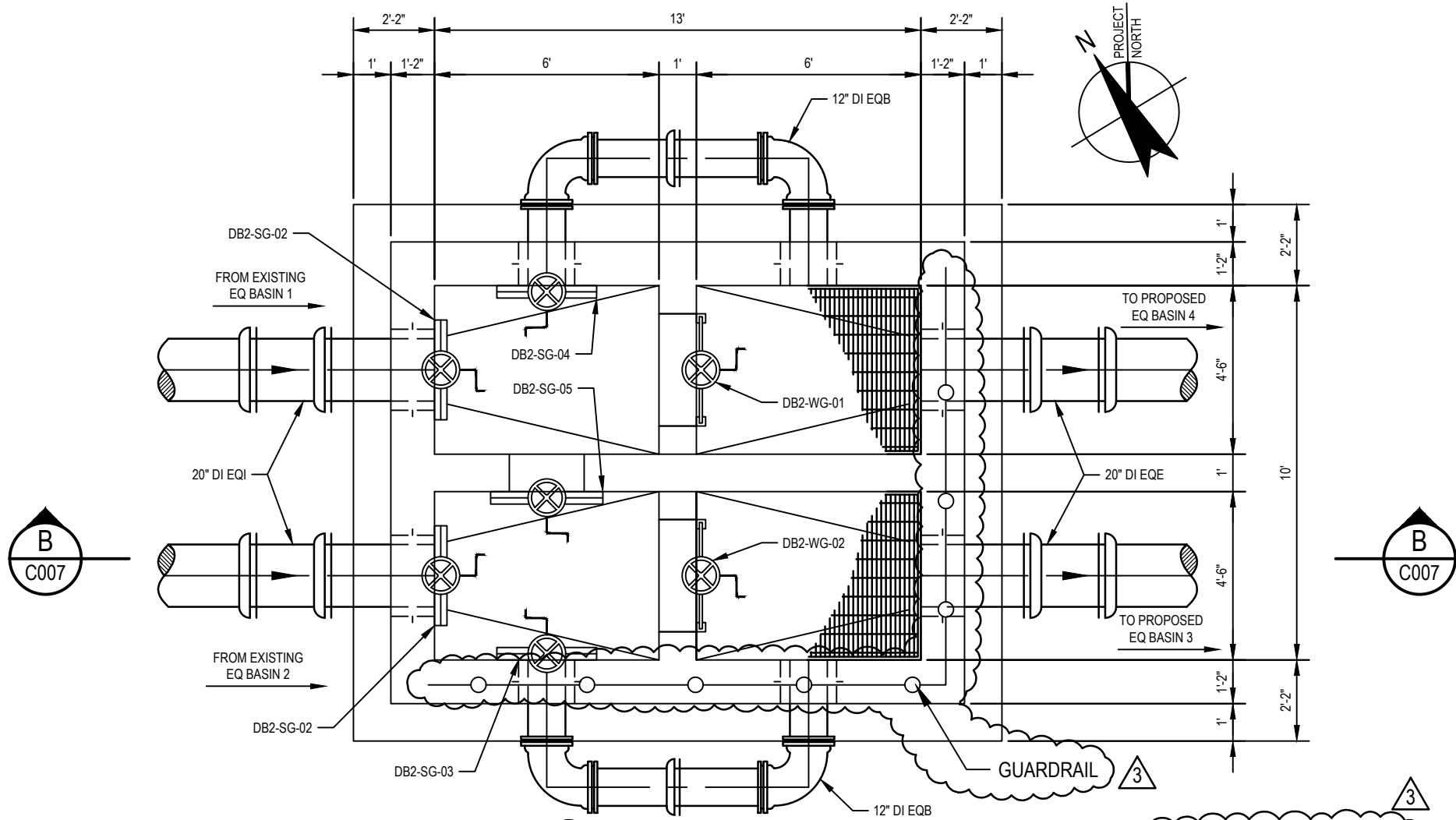


TOWN OF WAREHAM, MASSACHUSETTS
EQUALIZATION BASINS NO 3 & 4

ADDENDUM NO.3
ADD3.C006.01

Project No. 112-06142
Report No.
Date 8/07/2020

FIGURE 9



DISTRIBUTION BOX NO.2 PLAN

SCALE: 1/4" = 1'-0"

0 2' 4' 8'

3 ADDENDUM NO 3

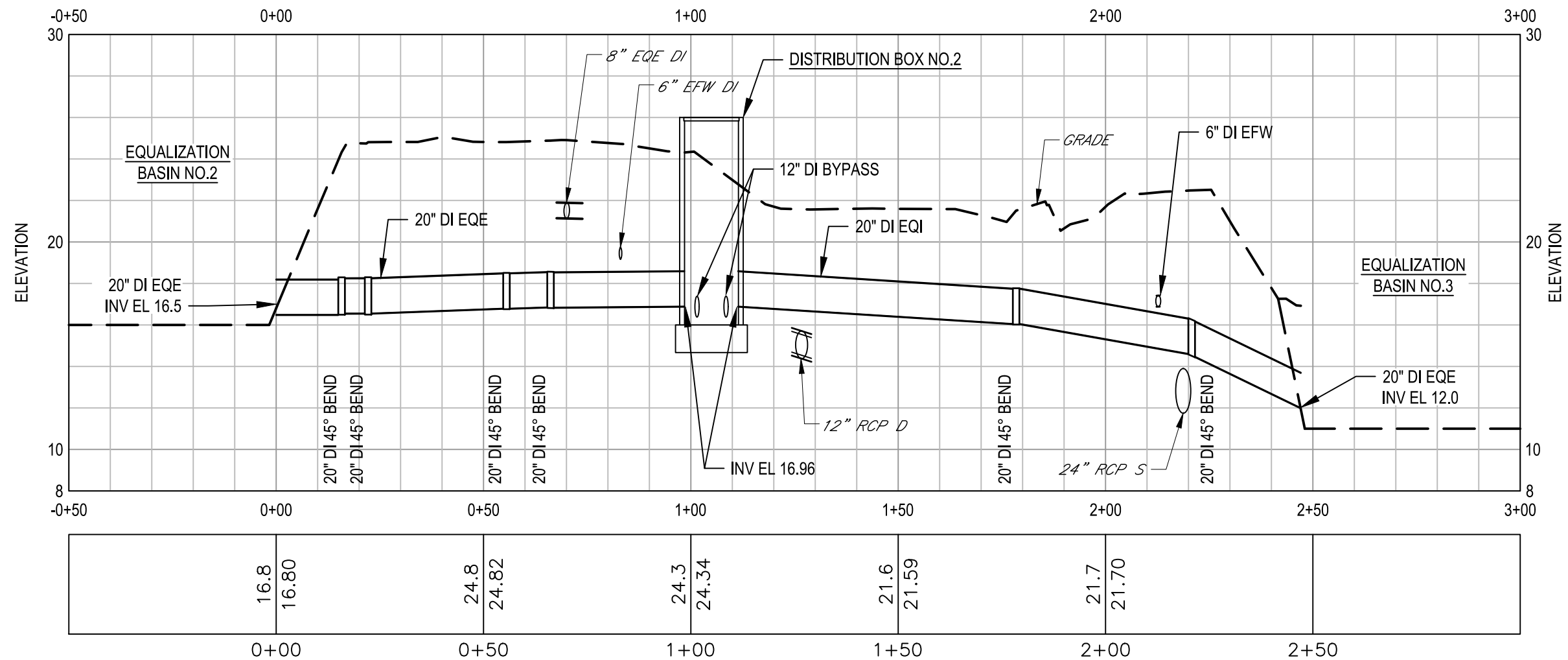


TOWN OF WAREHAM, MASSACHUSETTS
EQUALIZATION BASIN NO 3 AND 4

Project No. 11206142
Report No.
Date 8/07/2020

ADDENDUM NO 3
ADD3.C007.01

FIGURE 10



PROFILE A
20 INCH DI EQUALIZATION BASIN EFFLUENT AND
EQUALIZATION BASIN INFLUENT FROM EQUALIZATION
BASIN NO.2 TO EQUALIZATION BASIN NO.3

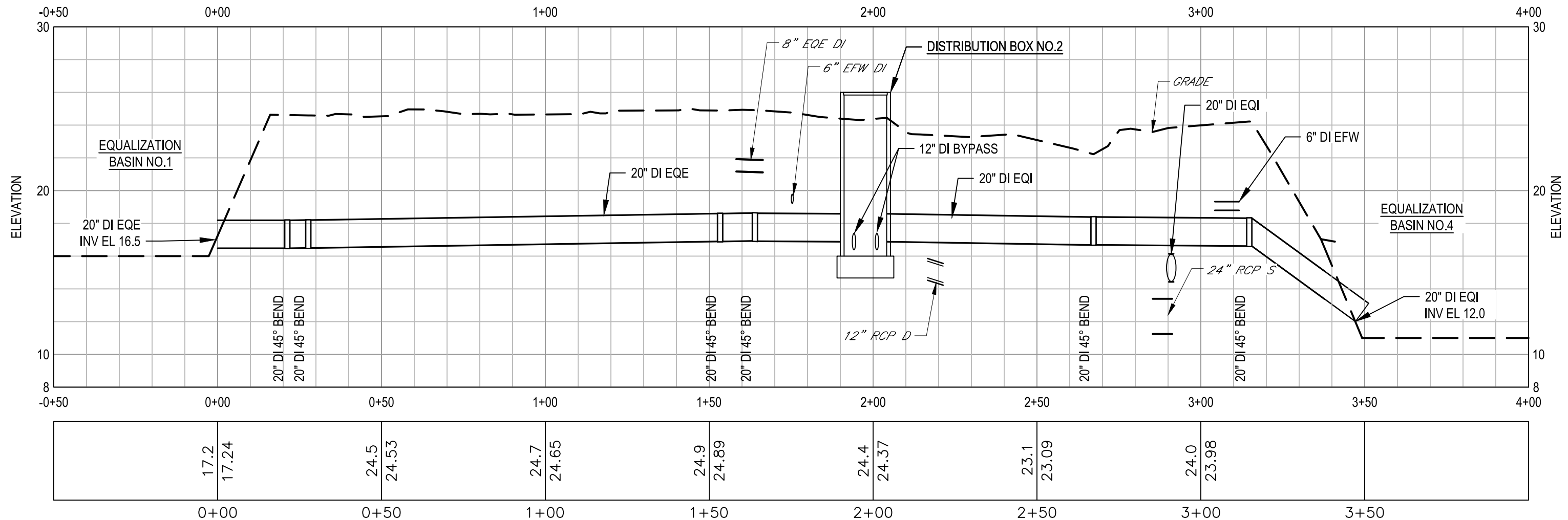


TOWN OF WAREHAM, MASSACHUSETTS
 EQUALIZATION BASIN NO.3 & NO.4

PIPE ALIGNMENT PROFILE 'A'
ADDENDUM NO.3
ADD3.C006.02

Project No. 112-06142
 Report No.
 Date 8/07/2020

FIGURE 11



PROFILE B
20 INCH DI EQUALIZATION BASIN EFFLUENT AND
EQUALIZATION BASIN INFLUENT FROM EQUALIZATION
BASIN NO.1 TO EQUALIZATION BASIN NO.4

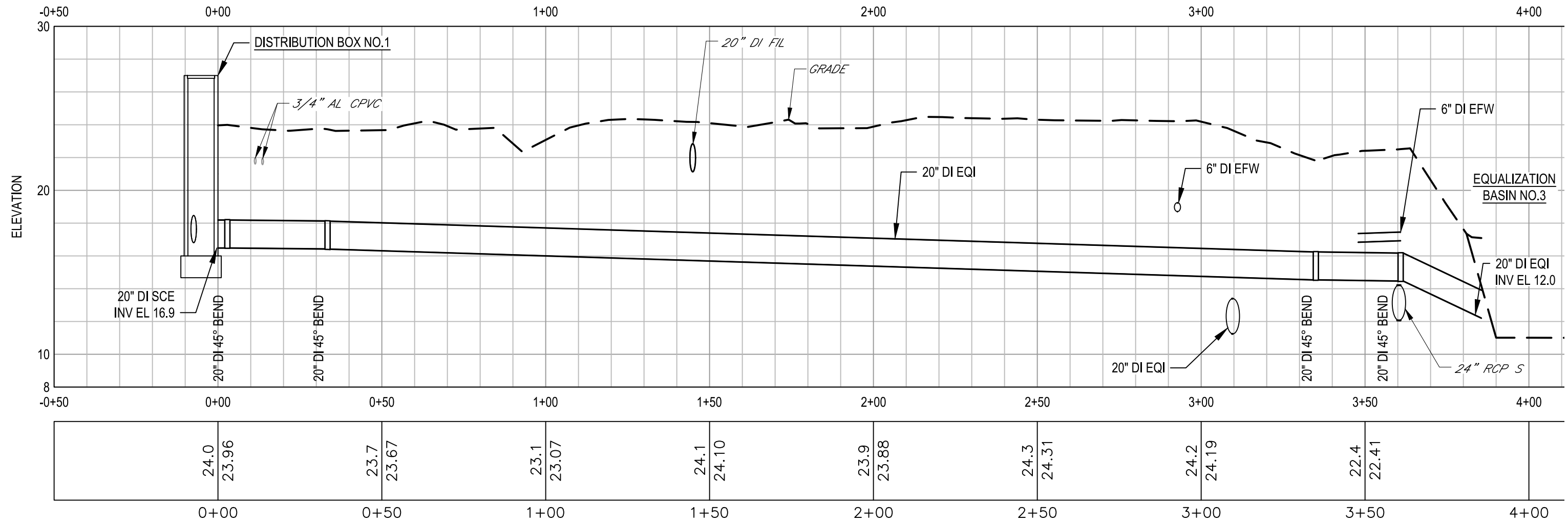


TOWN OF WAREHAM, MASSACHUSETTS
 EQUALIZATION BASIN NO.3 & NO.4

 PIPE ALIGNMENT PROFILE 'B'
 ADDENDUM NO.3
 ADD3.C006.03

Project No. 112-06142
 Report No.
 Date 8/07/2020

FIGURE 12



PROFILE C
20 INCH DI EQUALIZATION BASIN INFLUENT FROM
DISTRIBUTION BOX NO.1 TO EQUALIZATION BASIN NO.3

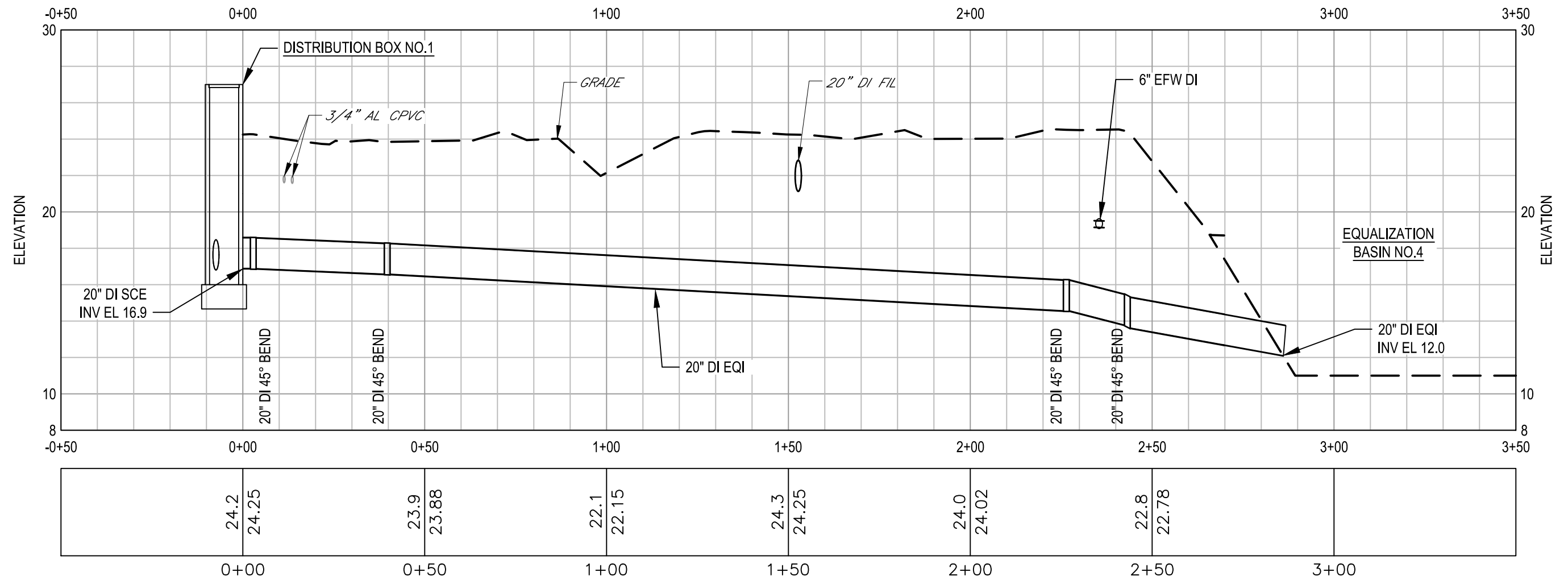


TOWN OF WAREHAM, MASSACHUSETTS
 EQUALIZATION BASIN NO.3 & NO.4

PIPE ALIGNMENT PROFILE 'C'
 ADDENDUM NO.3
 ADD3.C006.04

Project No. 112-06142
 Report No.
 Date 8/07/2020

FIGURE 13

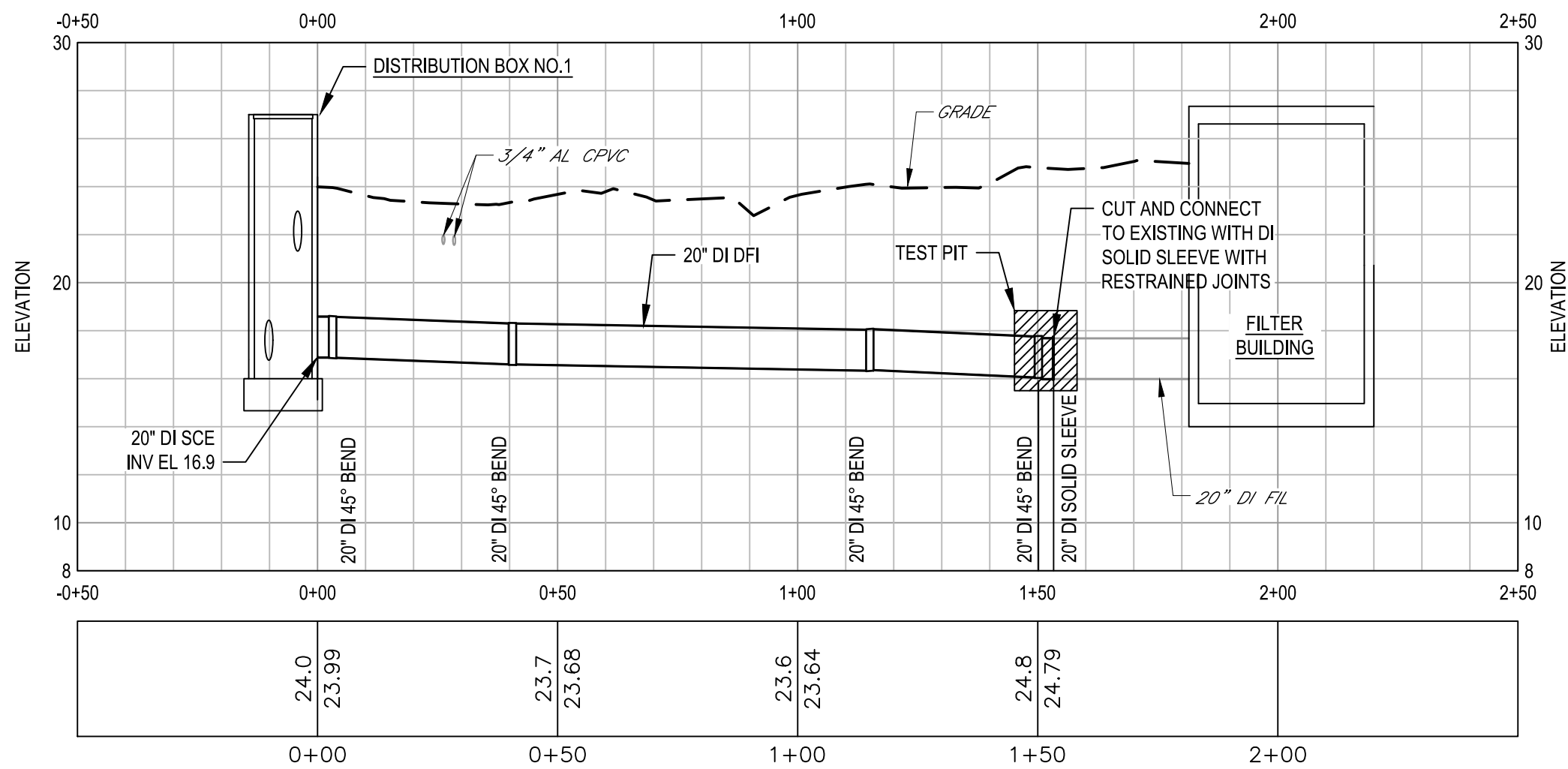


PROFILE D
20 INCH DI EQUALIZATION BASIN INFLUENT FROM
DISTRIBUTION BOX NO.1 TO EQUALIZATION BASIN NO.4



TOWN OF WAREHAM, MASSACHUSETTS
 EQUALIZATION BASIN NO.3 & NO.4
 PIPE ALIGNMENT PROFILE 'D'
 ADDENDUM NO.3
 ADD3.C006.05

Project No. 112-06142
 Report No.
 Date 8/07/2020



PROFILE E
20 INCH DI FILTER BUILDING INFLUENT FROM
DISTRIBUTION BOX NO.1 TO FILTER BUILDING



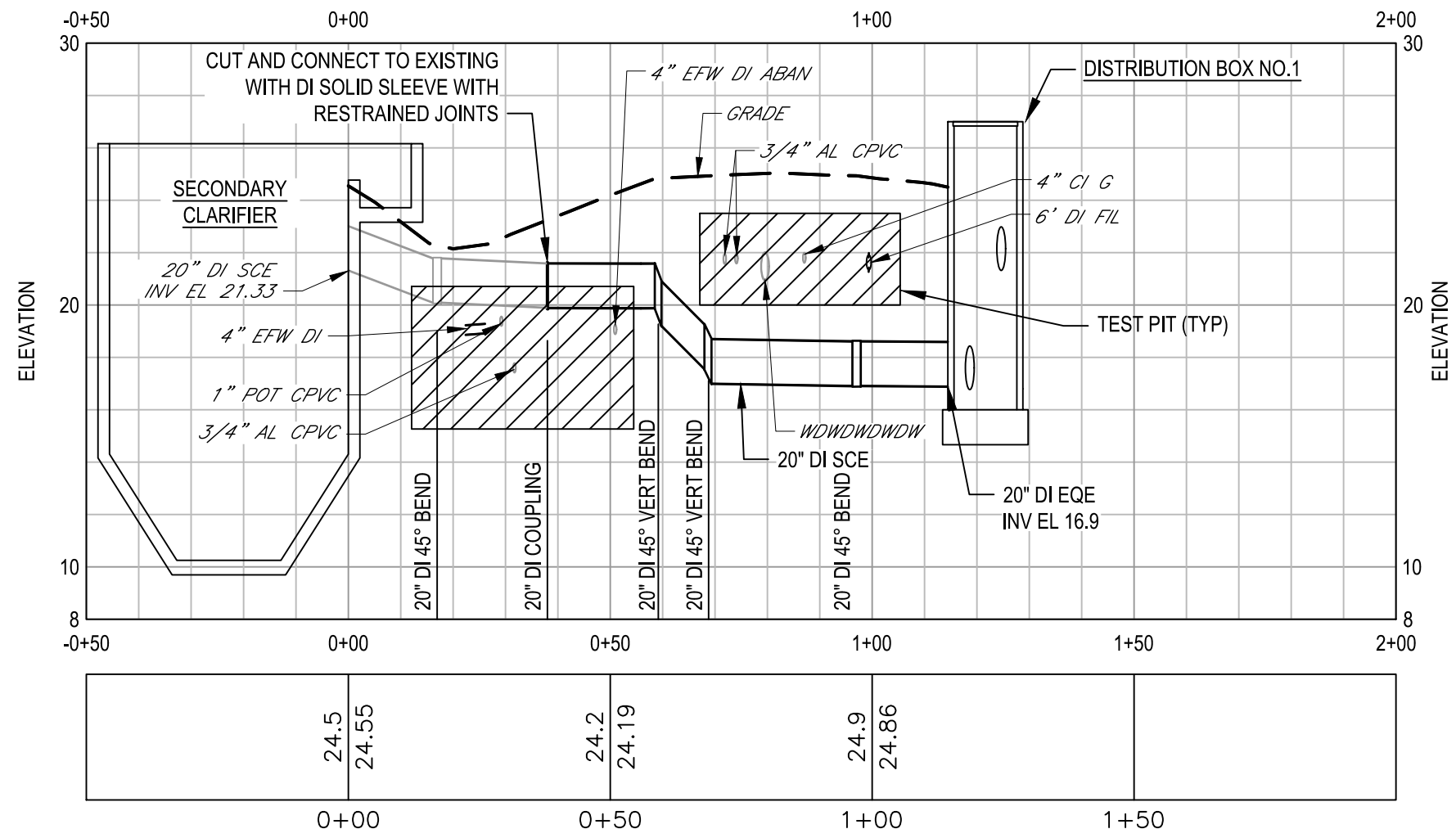
TOWN OF WAREHAM, MASSACHUSETTS
 EQUALIZATION BASIN NO.3 & NO.4

PIPE ALIGNMENT PROFILE 'E'
ADDENDUM NO.3
ADD3.C006.06

Project No. 112-06142
 Report No.
 Date 8/07/2020

Filename: C:\Users\jdfosdick\Documents\CLIENTS\GHD\WAREHAM\ADDENDUMS\ADD3-C005-A-F PROFILES.dwg
 Plot Date: 17 August 2020 - 6:36 AM

Source:



PROFILE F
20 INCH DI SECONDARY CLARIFIER EFFLUENT FROM
SECONDARY CLARIFIER TO DISTRIBUTION BOX NO.1



TOWN OF WAREHAM, MASSACHUSETTS
 EQUALIZATION BASIN NO.3 & NO.4

PIPE ALIGNMENT PROFILE 'F'
ADDENDUM NO.3
ADD3.C006.07

Project No. 112-06142
 Report No.
 Date 8/07/2020

Filename: C:\Users\jfosdick\Documents\CLIENTS\GHD\WAREHAM\ADDENDUMS\ADD3-C005-A-F PROFILES.dwg
 Plot Date: 17 August 2020 - 6:36 AM

Source:

SECTION 10441

SIGNS

PART 1 GENERAL

1.01. SECTION INCLUDES

- A. Safety warning signs.
- B. Instructional signs.

1.02. RELATED SECTIONS

- A. Section 01300 – SUBMITTALS
- B. Section 01600 – MATERIALS AND EQUIPMENT

1.03. SUBMITTALS

- A. Submit under provisions of Section 01300, Submittals.
- B. Manufacturer's Data - Submit descriptive literature and specifications, including color chart.
- C. Submit shop drawings depicting sign styles, lettering font, foreground and background colors, locations above finished floor and adjacent to doors, a list of all signs to be provided indicating sign location and text, and overall dimension of each sign and method of attachment.
- D. Submit manufacturer's standard warranty information.

1.04. REGULATORY REQUIREMENTS

- A. Wall-mounted signs shall conform to ICC/ANSI A 117.1 – 2003 - Accessible and Usable Buildings and Facilities.
- B. Exterior wall-mounted or post-mounted signs designating accessible parking spaces shall conform to ICC/ANSI A 117.1 – 2003 - Accessible and Usable Buildings and Facilities, and shall also conform to the applicable sections of Chapter 11 of the 2009 IBC.

1.05. DELIVERY, STORAGE, AND HANDLING

- A. Deliver products to site in accordance with Section 01600, Materials and Equipment.
- B. Store and protect products in accordance with Section 01600, Materials and Equipment.
- C. Sign packages shall have exterior labels indicating the name of the building or buildings where they are to be installed.
- D. Store adhesive or tape materials at temperatures within the manufacturer's recommended installation temperature range.

1.06. ENVIRONMENTAL REQUIREMENTS

- A. For mounting methods utilizing adhesive or tape materials: do not install signs when ambient temperature is below 70 degrees F. Maintain this minimum during and after installation of signs.

PART 2 PRODUCTS

2.01. MANUFACTURERS

A. Exterior Post-Mounted Signs

1. Emed Co. Inc., Chicago, IL.
www.emedco.com (800) 442-3633
2. Brimar Industries, Inc, Garfield, NJ
www.safetysign.com (800) 274-6271
3. Gemini Incorporated
www.geminisignproducts.com
(800) 538-8377
4. Or equal.

B. Safety Warning Signs

1. Seton Identification Products, Branford, CT.
www.seton.com (800) 571-2596
2. Emed Co. Inc., Chicago, IL.
www.emedco.com (800) 442-3633
3. www.SafetySigns.com
(800) 274-6271
4. Or equal.

C. Instructional Signs - Interior and exterior wall-mounted fiberglass signs.

1. Best Sign Systems, Inc., Montrose, CO.
www.bestsigns.com (800) 235-2378
2. Apco Signs, Atlanta, GA.
www.apcosigns.com (877)988-2726
3. ACE Sign Systems, Inc.
www.Acesign.com
(765) 288-1000
4. Or equal.

2.02. SIGNS

A. Exterior Room Designation Signs

1. Etched fiberglass with non-glare, UV-resistant painted surface.
 2. Base material thickness to be 0.25 inch.
 3. Minimum Width - 10 inches; minimum height: 3 inches.
 4. Room name lettering and Braille as required by ICC/ANSI A 117.1 – 2003.
 5. Raised white letters on black background.
 6. Mounting by countersunk stainless steel screws in pre-drilled holes with expansion sleeves. Plastic spacing sleeves behind signs as required to attain plum and true alignment.
 7. Best Sign Systems HC300, equal series by Apco Signs, or equal.
- B. Exterior Wall-Mounted or Post-Mounted Parking Space Designation Aluminum Signs
1. Sign Material - Non-reflective aluminum.
 2. Duroshield Tedlar top coat.
 3. Handicapped Parking Space Designation Signs
 - a. Text and graphics shall be as required by the referenced regulatory requirements, with the International Symbol of Accessibility.
 - b. Width 12 inches; height 24 inches.
 - c. Emed Co. Item Number 30840, equal by Brimar Industries, Inc., or equal.
 - d. White lettering against a blue background.
- C. Mounting Posts for Exterior Signs
1. Hot-dipped G90 galvanized steel U-channel.
 2. Stainless steel bolts for attaching the sign.
 3. Minimum Length - Size so that the bottom edge of the sign is 5 feet minimum above the adjacent pavement or walking surface.
 4. Minimum Post Embedment - 3 feet.
- D. Safety Warning Signs/Equipment Signs
1. Where self-adhesive application is possible: flexible vinyl with a clear polyester coating or high-performance polyester.
 2. Where it is necessary to mount the sign on railings or other framework near the hazard: 0.063-inch aluminum secured with stainless steel U-bolts or other appropriate stainless steel fasteners.
 3. Rectangular signs are to be a minimum size of 10 inches wide by 7 inches high.

4. Chemical hazard diamonds are to be vinyl decals or rigid plastic depending on mounting conditions. 11 inches by 11 inches minimum size, with hazard numbers intended for use on the sign material. Signs shall be supplied by manufacturer of chemical.
- E. Interior and Exterior Instructional Signs
1. Etched fiberglass with non-glare, UV-resistant painted surface.
 2. Base material thickness to be 0.25 inch.
 3. Minimum width 10 inches; minimum height 3 inches.
 4. Room name lettering and Braille as required by ICC/ANSI A 117.1 – 2003.
 5. Raised white letters on black background.
 6. Mounting by countersunk stainless steel screws in pre-drilled holes with expansion sleeves. Plastic spacing sleeves behind signs as required to attain plumb and true alignment.
 7. Best Sign Systems HC300, equal product by Apco Signs, or equal.

PART 3 EXECUTION

3.01. EXAMINATION

- A. Verify that surfaces are ready to receive work.
- B. Beginning installation means installer accepts existing surfaces.

3.02. INSTALLATION

- A. Install in accordance with manufacturer's instructions.
- B. Install signs after surfaces are finished.
- C. Safety warning signs shall be mounted so as to be clearly visible to the person approaching the equipment or area referenced by the sign. Sign locations shall be in compliance with OSHA regulations. Where possible, signs are to be mounted directly on the structures or equipment referenced by the safety message. Coordinate mounting locations with Engineer.
- D. Instructional signs shall be mounted:
 1. So that the baseline of characters shall be no less than 48 inches above, and no more than 60 inches above, the adjacent floor or ground surface.

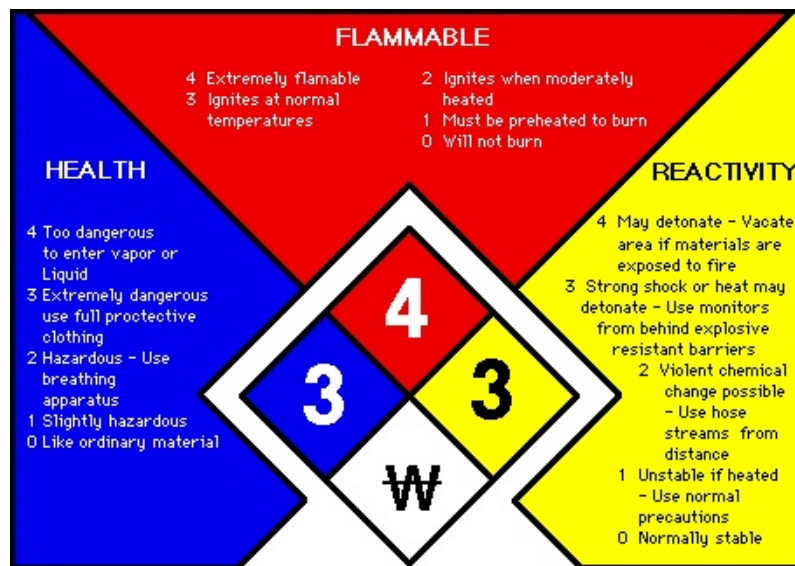
3.03. REQUIRED SIGNS

- A. Provide red "NON-POTABLE WATER - DO NOT DRINK" safety signs at the following locations:
 1. Yard hydrants.

2. All other locations providing non-potable (plant water) or plant effluent water sources.
- B. Provide red “CONFINED SPACE” sign with wording required by OSHA at appropriate locations.
- C. Provide “WARNING – FALL HAZARD” sign at the following locations:
1. Placed every 50 feet around equalization basin 3 and equalization basin 4 facing away from basin.
 2. Placed on each side of Distribution Box 2.
- D. Provide “STOP – DO NOT ENTER” sign centered on either end of walking path between equalization basin 3 and equalization basin 4.

(continued)

3.04. FIGURES



END OF SECTION