

GENERAL NOTES:

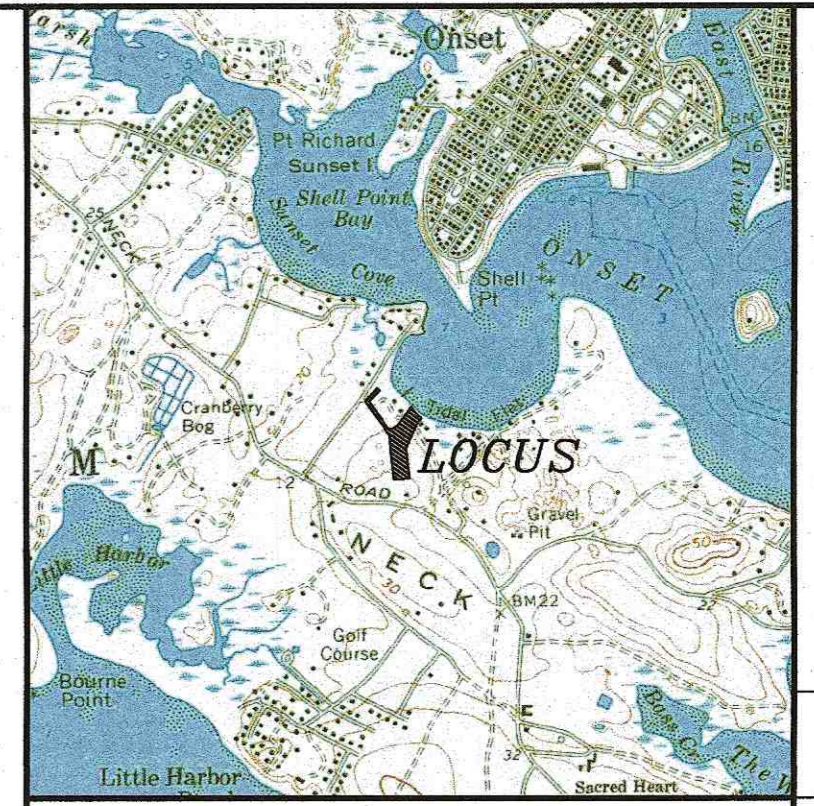
- ALL UNDERGROUND UTILITIES SHOWN OR NOT SHOWN WERE COMPILED ACCORDING TO AVAILABLE RECORD PLANS AND IN PART FROM FIELD SURVEY AND ARE APPROXIMATE ONLY. ACTUAL LOCATIONS MUST BE DETERMINED IN THE FIELD, BEFORE EXCAVATING, BLASTING, INSTALLING, BACKFILLING, GRADING, PAVEMENT RESTORATION, OR REPAIRING. ALL UTILITY COMPANIES, PUBLIC AND PRIVATE, MUST BE CONTACTED INCLUDING THOSE IN CONTROL OF UTILITIES NOT SHOWN ON THIS PLAN. SEE MGL CHAPTER 370, ACTS OF 1963. CONTRACTORS MUST CALL DIG-SAFE AT (1-888-DIG-SAFE OR 811) G.A.F. ENGINEERING, INC. ASSUMES NO RESPONSIBILITY FOR DAMAGES INCURRED AS A RESULT OF UTILITIES OMITTED OR INACCURATELY SHOWN.
- EXISTING CONDITIONS INFORMATION IS BASED ON AVAILABLE PLANS OF RECORD, PRIVATE UTILITY PLANS AND AN ON THE GROUND FIELD SURVEY BY GAF ENGINEERING INC ON VARIOUS DATES AND MOST RECENTLY IN JANUARY OF 2020.
- IN GENERAL, THE PLANS ARE DIAGRAMMATIC AND ARE NOT INTENDED TO SHOW EVERY FITTING, CHANGE IN DIRECTION OR DETAIL OF CONSTRUCTION.
- THE CONTRACTOR SHALL COORDINATE AND OBTAIN ALL REQUIRED PERMITS, GIVE ALL NOTICES, COMPLY WITH ALL LAWS AND REGULATIONS, AND PAY ALL FEES ASSOCIATED WITH THE INSTALLATION OF THIS WORK.
- THE CONTRACTOR SHALL FIELD VERIFY, PRIOR TO CONSTRUCTION ALL EXISTING UNDERGROUND UTILITY LOCATIONS AND POINTS OF INTERCONNECTION.
- THE CONTRACTOR SHALL INSTITUTE ALL SAFETY MEASURES NECESSARY TO PROTECT THE PUBLIC SAFETY. THIS SHALL INCLUDE, BUT NOT LIMITED TO, BARRICADES, SIGNS, LIGHTING, FENCES, POLICE DETAILS, AND ANY OTHER MEANS AS DIRECTED. NO TRENCHES ARE TO REMAIN OPEN OVERNIGHT AND SHALL BE PROTECTED BY BACKFILLING, PLATING OR OTHER MEANS APPROVED BY THE TOWN OF WAREHAM MUNICIPAL MAINTENANCE DEPARTMENT.
- THE CONTRACTOR SHALL PROVIDE ALL MATERIALS, LABOR, SUPERVISION, TOOLS, EQUIPMENT, FUEL, POWER, SANITARY FACILITIES AND INCIDENTALS NECESSARY FOR THE FURNISHING, PERFORMANCE, TESTING, START-UP AND COMPLETION OF THIS WORK.
- THE CONTRACTOR SHALL NOTIFY THE ENGINEER AND OWNER OF ANY CONFLICTS DISCOVERED IN THE FIELD.
- THE CONTRACTOR SHALL BE SOLELY RESPONSIBLE FOR THE MEANS, METHODS, TECHNIQUES, SEQUENCES, AND PROCEDURES OF CONSTRUCTION REQUIRED FOR THE INSTALLATION OF THIS WORK.
- THE CONTRACTOR IS RESPONSIBLE FOR OBTAINING AN EXCAVATION AND TRENCH PERMIT PURSUANT TO 520 CMR 14.00 AS APPLICABLE PRIOR TO THE START OF CONSTRUCTION.
- ALL MATERIALS SHALL BE NEW AND FREE FROM DEFECTS AND OF GOOD QUALITY.
- THE CONTRACTOR SHALL KEEP THE PREMISES FREE FROM THE ACCUMULATION OF WASTE MATERIAL AND OTHER DEBRIS RESULTING FROM THIS WORK.
- ALL METHODS AND MATERIALS SHALL CONFORM WITH MassDOT STANDARDS AND SPECIFICATIONS, AND THE REQUIREMENTS OF THE TOWN OF WAREHAM MUNICIPAL MAINTENANCE DEPARTMENT.
- ALL UTILITY INSTALLATIONS SHALL BE IN CONFORMANCE WITH ALL APPLICABLE TOWN, STATE AND FEDERAL REQUIREMENTS & REGULATIONS.

NOTES:

- FOR COMPLETE STORAGE BARN/GARAGE DIMENSIONS AND CONSTRUCTION DETAILS REFER TO ARCHITECTURAL & STRUCTURAL PLANS BY OTHERS.
- ALL CONSTRUCTION SHALL COMPLY WITH MASSACHUSETTS AND INTERNATIONAL BUILDING CODE REQUIREMENTS, AS APPLICABLE FOR CONSTRUCTION IN FLOOD ZONES. REFER TO ARCHITECTURAL PLANS.
- CONTRACTOR SHALL PROVIDE AND MAINTAIN HAY BALES WITH SILT FENCE EROSION CONTROL BARRIER AS SHOWN ON THE PLANS.
- CONTRACTOR SHALL REMOVE SECTIONS OF EXISTING FENCE AS REQUIRED TO COMPLETE THE WORK. COORDINATE WITH OWNER.
- CONTRACTOR SHALL COORDINATE WITH OWNER FOR DRIVEWAY SURFACE FINISH.
- LOAM AND SEED ALL DISTURBED AREAS.
- THE LIMIT OF WORK & CLEARING SHALL ALSO BE SET AT THE LIMITS OF THE EROSION CONTROL BARRIER.
- THE WETLAND FLAG LOCATIONS DEPICTED ON THIS PLAN WERE DELINEATED IN THE FIELD BY ENVIRONMENTAL CONSULTING & RESTORATION, LLC (EXR) ON AUGUST 19 & 22, 2019 AND WERE FIELD LOCATED BY G.A.F. ENGINEERING, INC. IN AUGUST OF 2019.

PLAN REFERENCE:

REFER TO A PLAN PREPARED BY G.A.F. ENGINEERING, INC. ENTITLED "APPROVAL NOT REQUIRED PLAN OF LAND", OVER JORDAN ROAD, WAREHAM, MA, PREPARED FOR TJP REALTY, LLC, DATED JANUARY 21, 2020 AND RECORDED IN PLAN BOOK 64, PAGE 60. THE PROPERTY DIMENSIONS AND AREA SHOWN ON THIS PLAN REFLECT CHANGES TO THE RECORDED PLAN AND WILL REQUIRE PLANNING BOARD APPROVAL.



LOCUS MAP : SCALE 1" = 2000'

LOT DATA:

ASSESSORS MAP: 20/ LOT 1035-C
ADDRESS: 13 OVER JORDAN ROAD

OWNER:
TJP REALTY, LLC
19 OVER JORDAN ROAD
WAREHAM, MA 02571

ZONING DATA:
ZONE: RESIDENCE 60 (R-60)

SETBACKS:
MINIMUM LOT AREA: 60,000 S.F.
MINIMUM FRONTAGE: 180'
MINIMUM FRONT SETBACK: 60'
MINIMUM SIDE SETBACK: 20'
MINIMUM REAR SETBACK: 20'
MAXIMUM BUILDING HEIGHT: 35'

FLOOD_ZONE DATA:

THE PROJECT IS WITHIN FLOOD ZONE AE-15, ZONE X (SHADED) AND VE-17. REFER TO THE F.E.M.A. FLOOD INSURANCE RATE MAP PANEL NUMBER 25023C0581K, DATED: FEBRUARY 5, 2014.

LEGEND

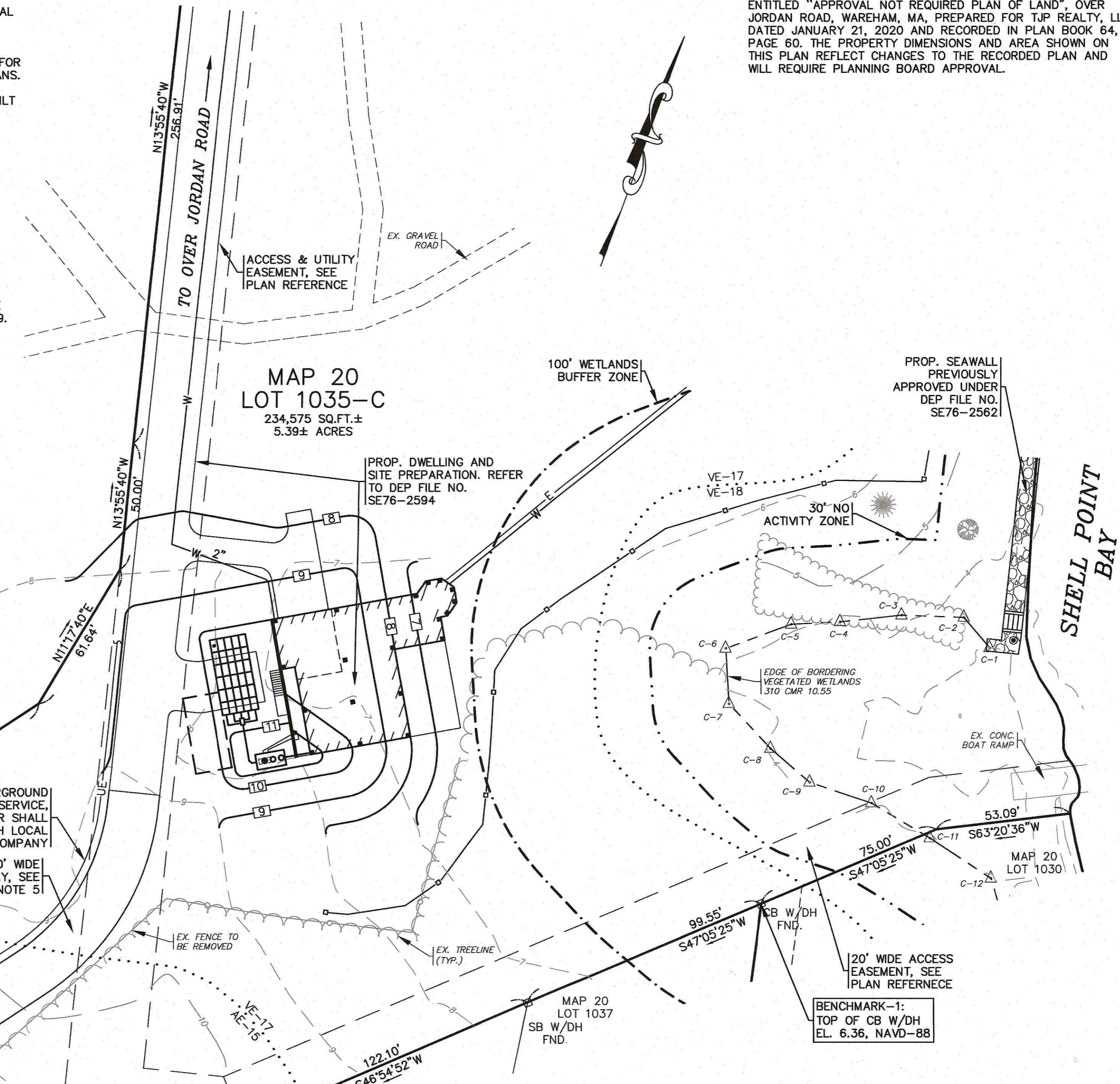
EXISTING	DESC.
10	CONTOURS
14x5	SPOT GRADES
(Symbol)	WETLANDS
(Symbol)	30' NO ACTIVITY ZONE
(Symbol)	100' BUFFER ZONE
(Symbol)	F.E.M.A. FLOOD ZONE
(Symbol)	LIMWA
(Symbol)	CATCH BASIN (CB)
(Symbol)	DRAIN MANHOLE (DMH)
(Symbol)	OVERHEAD WIRES
(Symbol)	UTILITY POLE
(Symbol)	GUY POLE
(Symbol)	WATER GATE VALVE
(Symbol)	WATER SHUTOFF/CURB STOP
(Symbol)	HYDRANT
(Symbol)	WATER LINE
(Symbol)	UNDERGROUND ELECTRIC
(Symbol)	SEWER MANHOLE (SMH)
(Symbol)	TREE/BRUSH LINE
(Symbol)	LIGHT POST
(Symbol)	GAS LINE
(Symbol)	GAS GATE/VALVE
(Symbol)	GAS SHUTOFF
(Symbol)	GAS METER
(Symbol)	FENCE
(Symbol)	SIGN
(Symbol)	BOUND
(Symbol)	STONE WALL
(Symbol)	REBAR
(Symbol)	DESC.
(Symbol)	CONTOURS
(Symbol)	SPOT GRADES
(Symbol)	EROSION CONTROL
(Symbol)	CHAIN LINK FENCE
(Symbol)	UNDERGROUND ELECTRIC
(Symbol)	REMOVE & DISPOSE
(Symbol)	TREELINE



G.A.F. ENGINEERING, INC.
PROFESSIONAL ENGINEERS & LAND SURVEYORS
266 MAIN STREET - WAREHAM, MA 02571
TEL: (508) 295-6600 FAX: (508) 295-6634
E-MAIL: gaf@gaf-eng.com

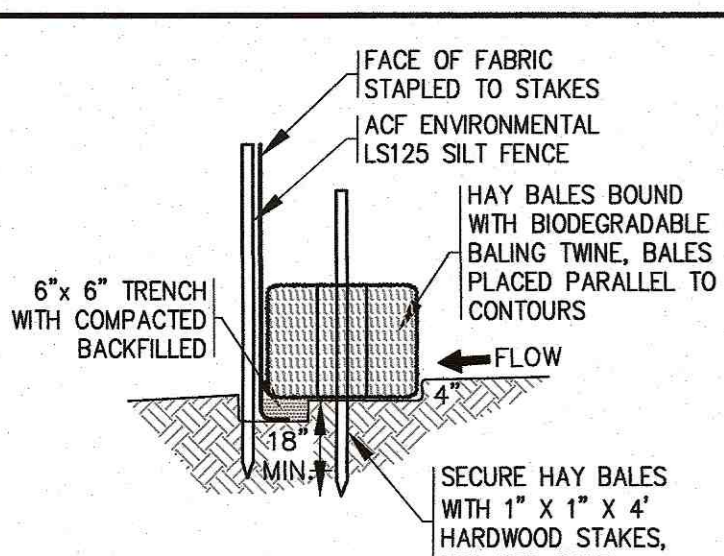
PLAN TO ACCOMPANY NOTICE OF INTENT
WAREHAM, MA
PREPARED FOR:
TJP REALTY, LLC
13 OVER JORDAN ROAD WAREHAM, MA
19 OVER JORDAN ROAD WAREHAM, MA

JOB NO.: 19-9295
DWG. 1 OF 1



EROSION CONTROL NOTES:

- THE SITE CONTRACTOR IS RESPONSIBLE FOR ESTABLISHING AND MAINTAINING SUITABLE EROSION AND SEDIMENTATION CONTROL DEVICES ON SITE DURING CONSTRUCTION AS REQUIRED TO PREVENT SILT FROM LEAVING THE SITE. SILT WILL NOT BE ALLOWED BEYOND CONSTRUCTION LIMITS. ADDITIONAL PROTECTION: ON-SITE PROTECTION MUST BE PROVIDED THAT WILL NOT PERMIT SILT TO LEAVE THE PROJECT CONFINES DUE TO UNFORESEEN CONDITIONS OR ACCIDENTS.
- EROSION CONTROL MEASURES SHALL BE MAINTAINED AT ALL TIMES. IF FULL IMPLEMENTATION OF THE APPROVED PLANS DOES NOT PROVIDE SUFFICIENT EROSION AND SEDIMENT CONTROL, ADDITIONAL CONTROL MEASURES SHALL BE IMPLEMENTED. CONTRACTOR IS RESPONSIBLE FOR REPAIRING OR REPLACING EROSION CONTROL DEVICES WHICH BECOME INEFFECTIVE.
- CONTRACTOR SHALL OBTAIN ALL NECESSARY PERMITS FOR ALL GRADING AND OTHER LAND DISTURBING ACTIVITIES PRIOR TO CONSTRUCTION.
- THE CONTRACTOR IS RESPONSIBLE FOR THE CLEANUP AND REMOVAL OF ANY BUILDUP OF SEDIMENT WHICH ESCAPES FROM THE SITE.
- CONTRACTOR IS RESPONSIBLE FOR CLEANING SILT AND DEBRIS OUT OF ALL STORM DRAINAGE STRUCTURES UPON THE COMPLETION OF CONSTRUCTION.
- THE CONTRACTOR IS RESPONSIBLE FOR REMOVING ALL TEMPORARY EROSION CONTROL MEASURES AFTER CONSTRUCTION IS COMPLETE AND ALL DISTURBED AREAS HAVE BEEN STABILIZED.
- THE CONTRACTOR IS RESPONSIBLE FOR ALL COSTS ASSOCIATED WITH ANY FINES LEVIED AGAINST THE SITE FOR VIOLATIONS OF EROSION CONTROL REGULATIONS.
- CONTRACTOR SHALL PROVIDE TEMPORARY GROUND COVER FOR ALL AREAS WITH EXPOSED SOIL WHICH WILL NOT BE DISTURBED BY GRADING OPERATIONS FOR A PERIOD OF THIRTY DAYS OR MORE.
- IF WORK ON THIS PROJECT IS SUSPENDED FOR ANY REASON, THE CONTRACTOR SHALL MAINTAIN THE SOIL EROSION AND SEDIMENTATION CONTROL FACILITIES IN GOOD CONDITION DURING THE SUSPENSION OF WORK.
- SPRINKLE OR APPLY DUST SUPPRESSERS TO MINIMIZE DUST AT THE CONSTRUCTION SITE. MAINTAIN DUST CONTROL MEASURES UNTIL ALL DISTURBED AREAS HAVE BEEN PERMANENTLY STABILIZED.
- THE CONTRACTOR WILL ALSO NEED TO COMPLY TO ANY ORDER OF CONDITIONS THAT MAY BE ISSUED BY THE TOWN OF WAREHAM CONSERVATION COMMISSION.

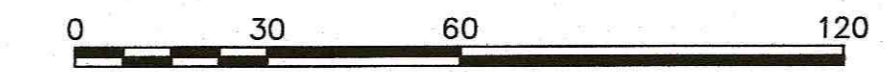


- NOTES:**
- EROSION CONTROL MEASURES SHALL BE MAINTAINED UNTIL VEGETATIVE OR STABILIZED COVER HAS BEEN FIRMLY ESTABLISHED.
 - EROSION CONTROL MEASURES SHALL FOLLOW THE PERFORMANCE STANDARDS OF THE USDA SOIL CONSERVATION SERVICE, AND ANY APPLICABLE STATE/LOCAL CONSERVATION AUTHORITY.

EROSION CONTROL BARRIER DETAIL
N.T.S.

SITE PLAN

SCALE: 1"=30'



H:\GAF DRAWINGS\2019 DRAWINGS\19-9295-R (PARENTEAU)\2025.dwg (19295_BARN_R01-Rev.dwg)