



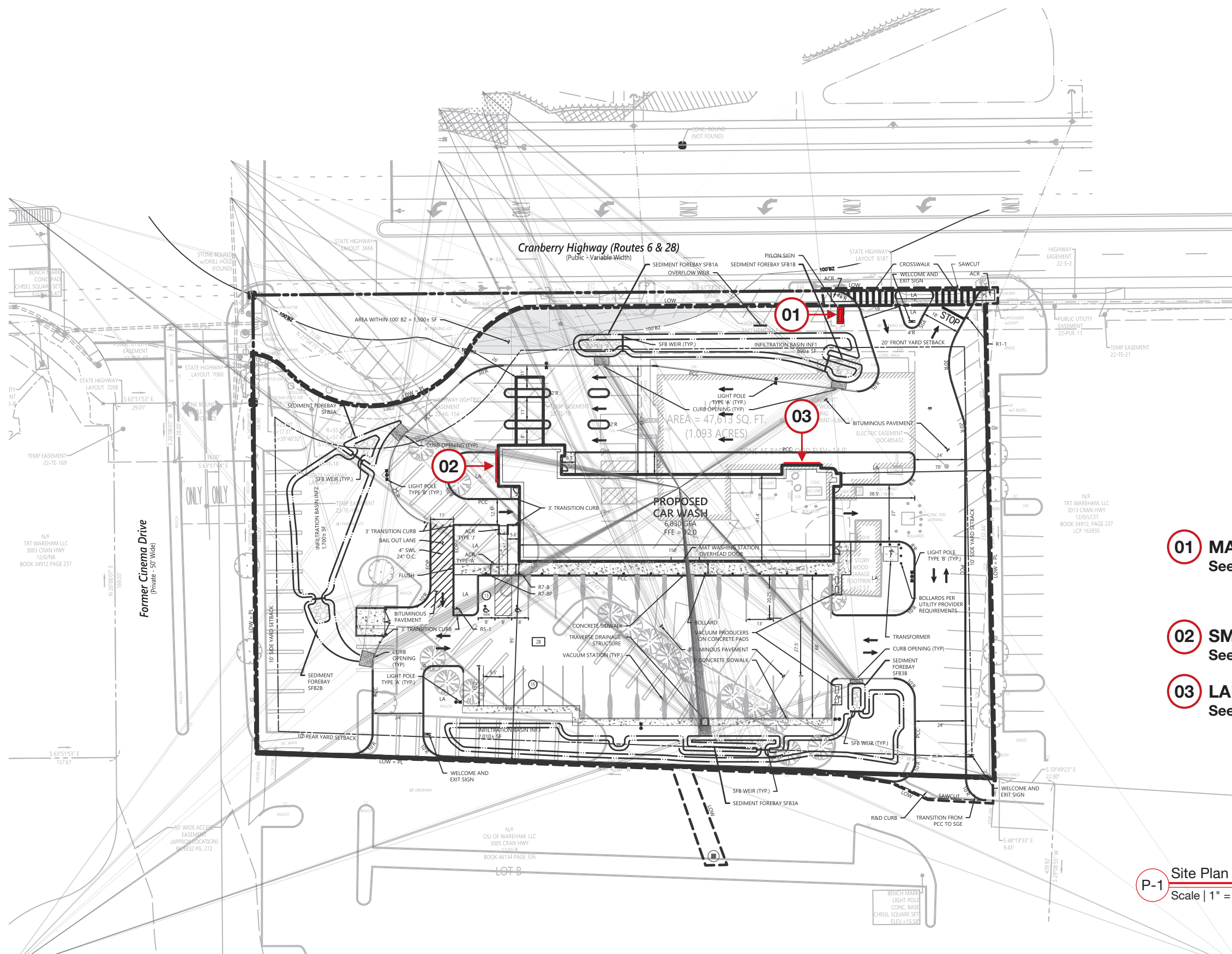
3013 Cranberry Highway
Wareham MA 02538

ACCT #: 15906

DWG #1

PERMIT

Note: This photo reimage is intended for visual communication of signage intent depicted in it's completed/installed setting. This is not intended to be an accurate scaled drawing. Although the proper scale is attempted-we are not responsible for conflicts in final visual results.



01 MAIN ID SIGN
See Pg 2 for Details

02 SMALL CHANNEL LETTERS SET
See Pg 3 for Details

03 LARGE CHANNEL LETTERS SET
See Pg 4 for Details

P-1 Site Plan
Scale | 1" = 50'-0"



Your Brand Realized™
251 Boot Road
Downingtown, PA 19335
610.518.5881
610.518.5244
info@prosign.net

SITE | PLAN VIEW

REVISIONS:

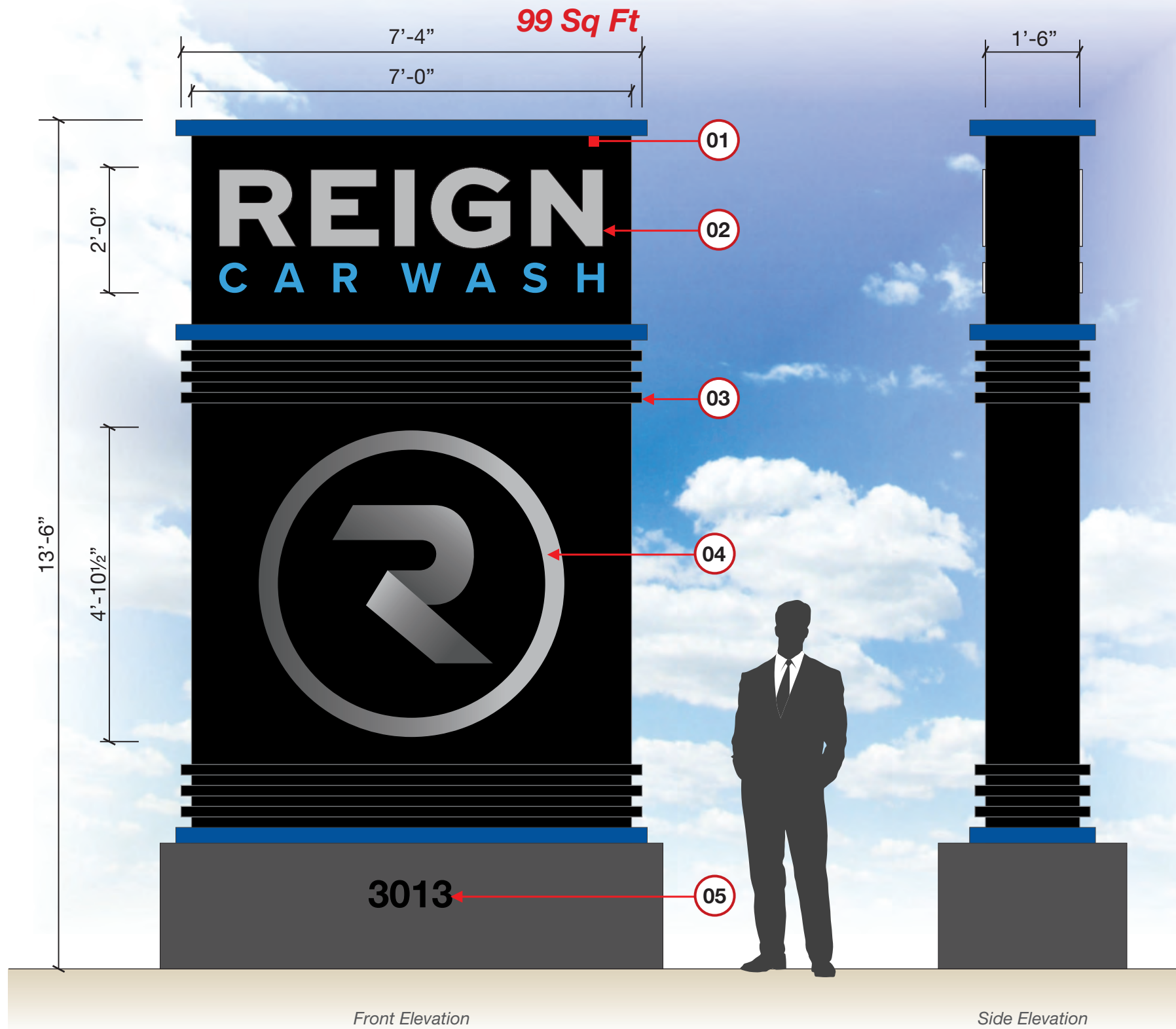
PM: JD
DESIGNER: DK
DATE: 7/19/2021

Copyright, Pro Sign Company, 2021
THIS DRAWING INCLUDES DATA THAT IS PROPRIETARY INFORMATION OF PRO SIGN COMPANY. IT SHALL NOT BE USED, DUPLICATED OR DISCLOSED IN WHOLE OR PART FOR ANY PURPOSE OTHER THAN TO EVALUATE THIS PROPOSAL. IF A CONTRACT IS AWARDED TO THIS PROPOSER AS A RESULT OF OR IN CONNECTION WITH THE SUBMISSION OF THIS DATA, THE DEFEREE SHALL HAVE THE RIGHT TO USE OR DISCLOSE THE DATA TO THE EXTENT PROVIDED IN THE RESULTING CONTRACT.

Job File Locations
DWG: Y:\R\REIGN Car Wash\SITES\MA\Wareham\15096\DESIGN\15096-1_PRM-REIGN CAR WASH_WAREHEM, MA.cdr

Page 1

SIGN 1 -MAIN ID SIGN



O-3 Section Detail
Scale | 1/2"=1'-0"

- 01 -D/F Illuminated Monument Sign With Push Thru Graphics & Logo Decal
99 Sq Ft
- 02 -Push Thru Copy-
3/4" clear acrylic push thru w/ 3/16" routed flange at 2nd surface, 1/2"± visible returns 1st surface. 3M™ translucent vinyl applied to 1st surface
- 03 -Decorative Aluminum Accents
- 04 -Non-Illuminated Logo Decal
- 05 -Address (Exact Specs & Number TBD)



3013 Cranberry Highway
Wareham MA 02538
ACCT #: 15906
DWG #1

PERMIT

Note: This photo reimage is intended for visual communication of signage intent depicted in it's completed/installed setting. This is not intended to be an accurate scaled drawing. Although the proper scale is attempted-we are not responsible for conflicts in final visual results.

Color Palette | Pantone • Paint • Vinyl

- HEX #: 59595b
- HEX #: bcbec0
- HEX #: 49a5dc

Typography

Sweet Sans Pro
Heavy | 0 Kerning | 0 Spacing

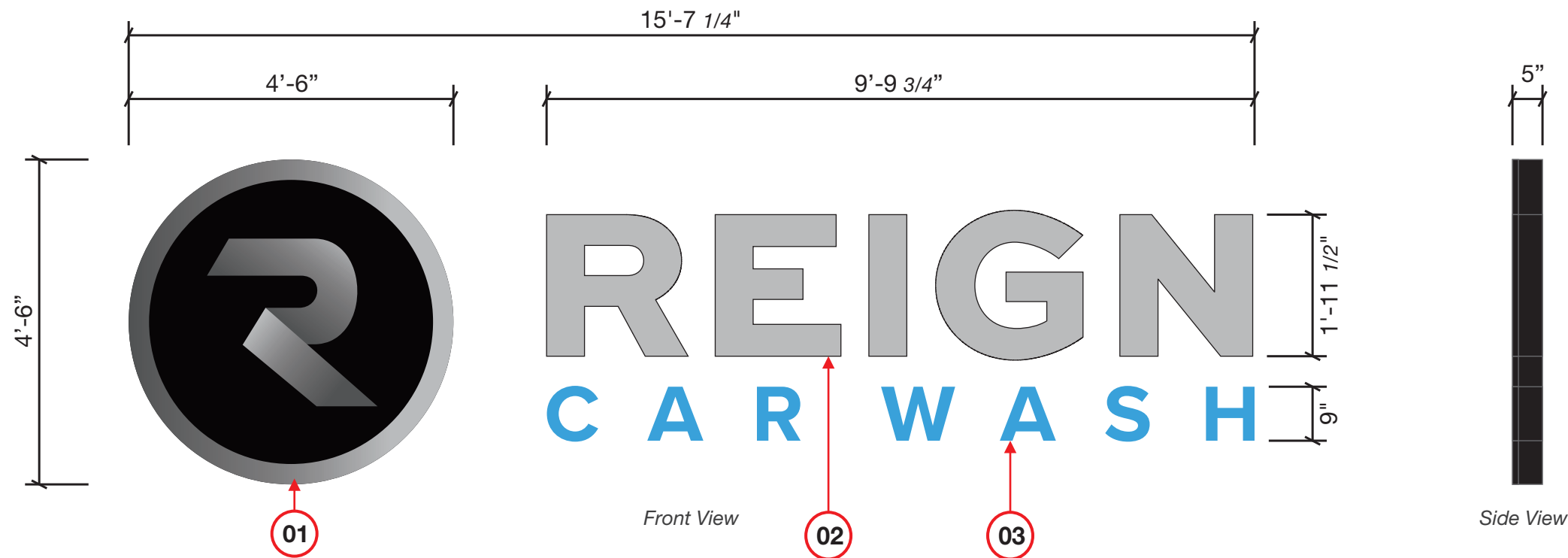
ABCDEFGHIJKLMNOPQRSTUVWXYZ
abcdefghijklmnopqrstuvwxyz
0123456789#!&



SIGN 2 - SMALL CHANNEL LETTERS

QTY:1

70.22 Sq Ft



0-1 Channel Letters
Scale | 1/2" = 1'-0"



3013 Cranberry Highway
Wareham MA 02538

ACCT #: 15906

DWG #1

PERMIT

Note: This photo reimage is intended for visual communication of signage intent depicted in it's completed/installed setting. This is not intended to be an accurate scaled drawing. Although the proper scale is attempted-we are not responsible for conflicts in final visual results.

Color Palette | Pantone • Paint • Vinyl

- HEX #: 59595b
- HEX #: bcbec0
- HEX #: 49a5dc

Typography

Sweet Sans Pro
Heavy | 0 Kerning | 0 Spacing

ABCDEFGHIJKLMNOPQRSTUVWXYZ
abcdefghijklmnopqrstuvwxyz
0123456789#!&



01 Face Lit Icon Cabinet

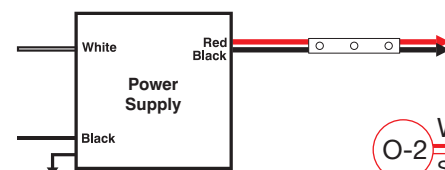
- Digitally Printed 3/16" white Polycarbonate faces
- 1" Black Jewelite trimcap
- 5" Deep white .040 aluminum coil side returns Painted Black
- Internally illuminated with white LED's
- Low voltage power supply located behind wall.

02 "REIGN" - Face Lit Remote Channel Letters

- 3M™ Silver 3630-121 Translucent Film applied to 1st surface of cut out 3/16" white acrylic faces (#2447)
- NOTE: FACES WILL APPEAR AS SILVER DURING DAY, AT NIGHT "REIGN" WILL ILLUMINATE WHITE**
- 1" Black Jewelite trimcap
- 5" Deep white .040 aluminum coil side returns Painted to match Black
- Internally illuminated with white LED's
- Low voltage power supply located behind wall.

03 "CAR WASH" - Face Lit Remote Channel Letters

- Digitally Printed & Laminated 3M Clear Vinyl applied to 1st surface of cut out 3/16" white acrylic faces (#2447)
- 1" Black Jewelite trimcap
- 5" Deep white .040 aluminum coil side returns Painted Black
- Internally illuminated with white LED's
- Low voltage power supply located behind wall.



0-2 Wiring Diagram
Scale | NTS



251 Boot Road
Downingtown, PA 19335
610.518.5881
610.518.5244
info@prosign.net

FACE LIT CHANNEL LETTERS | SPECIFICATIONS

QTY : ONE (1) SET CHANNEL LETTERS

REVISIONS:

PM: JD
DESIGNER: DK

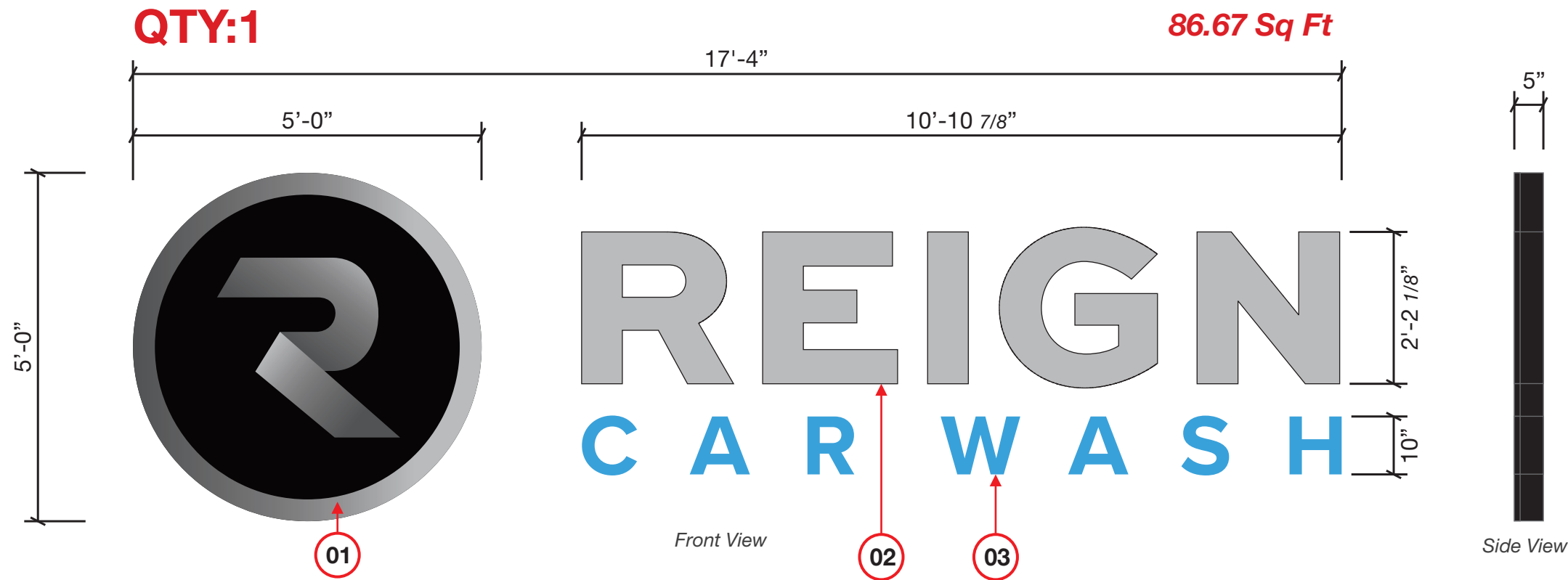
DATE: 7/19/2021

Copyright, Pro Sign Company, 2021
THIS DRAWING INCLUDES DATA THAT IS PROPRIETARY INFORMATION OF PRO SIGN COMPANY. IT SHALL NOT BE USED, DUPLICATED OR DISCLOSED IN WHOLE OR PART FOR ANY PURPOSE OTHER THAN TO EVALUATE THIS PROPOSAL. IF A CONTRACT IS AWARDED TO THIS PROPOSER AS A RESULT OF OR IN CONNECTION WITH THE SUBMISSION OF THIS DATA, THE DEFEREE SHALL HAVE THE RIGHT TO USE OR DISCLOSE THE DATA TO THE EXTENT PROVIDED IN THE RESULTING CONTRACT.


Job File Locations

DWG:
Y:\R\REIGN Car Wash\SITES\MA\Wareham\15096\DESIGN\15096-1_PRM-REIGN CAR WASH_WAREHEM, MA.cdr

SIGN 3 - LARGE CHANNEL LETTERS



O-1 Channel Letters
Scale | 1/2" = 1'-0"



3013 Cranberry Highway
Wareham MA 02538
ACCT #: 15906
DWG #1

PERMIT

Note: This photo reimage is intended for visual communication of signage intent depicted in it's completed/installed setting. This is not intended to be an accurate scaled drawing. Although the proper scale is attempted-we are not responsible for conflicts in final visual results.


Color Palette | Pantone • Paint • Vinyl

- HEX #: 59595b
- HEX #: bcbec0
- HEX #: 49a5dc

Typography

Sweet Sans Pro
Heavy | 0 Kerning | 0 Spacing

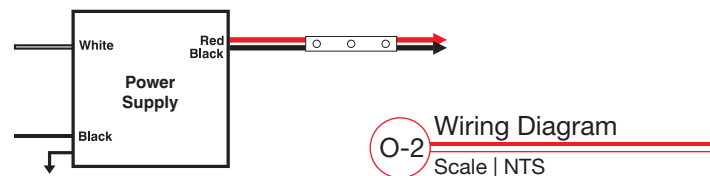
ABCDEFGHIJKLMNOPQRSTUVWXYZ
abcdefghijklmnopqrstuvwxyz
0123456789#!&

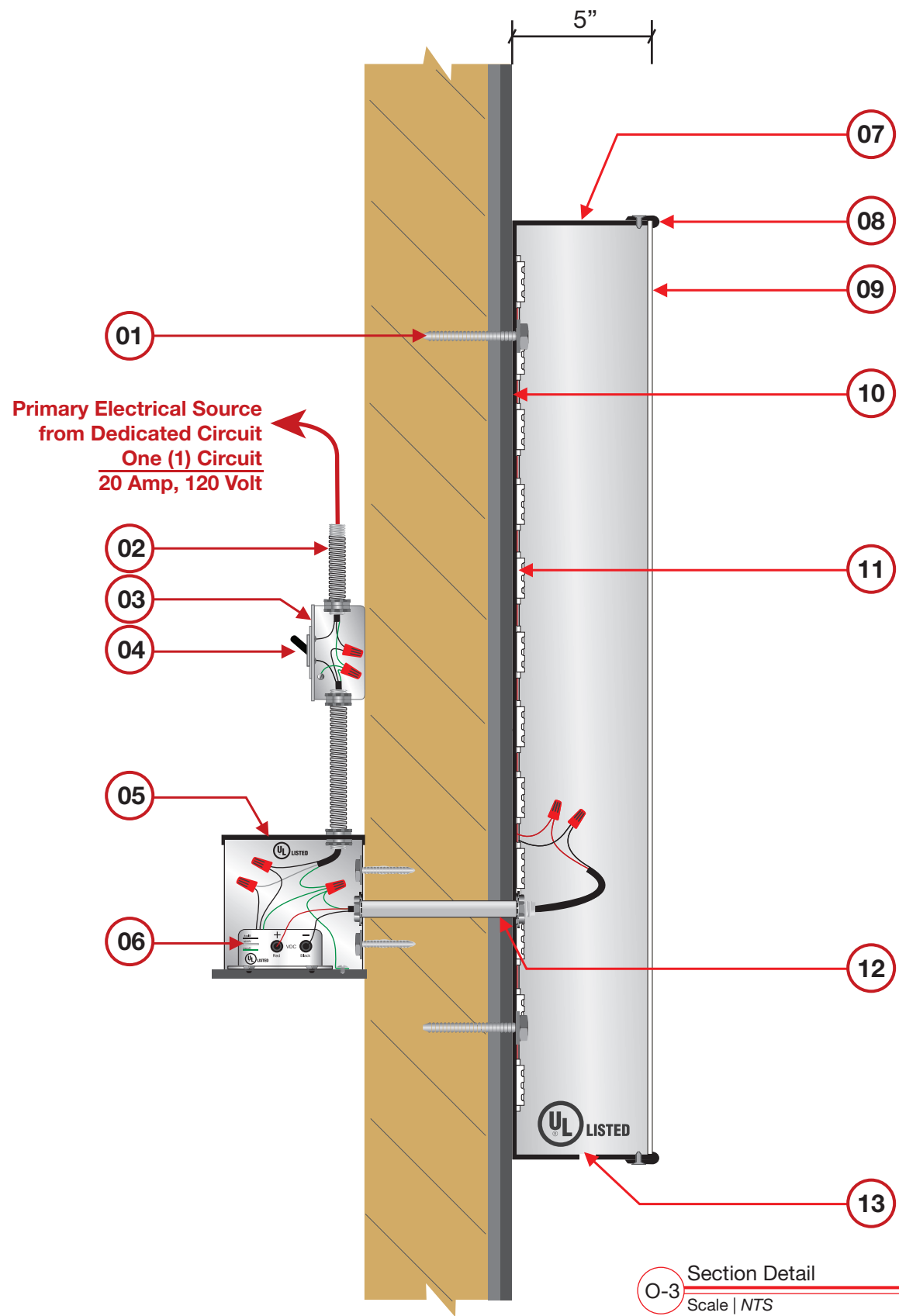


- 01** Face Lit Icon Cabinet
- Digitally Printed 3/16" white Polycarbonate faces
 - 1" Black Jewelite trimcap
 - 5" Deep white .040 aluminum coil side returns Painted Black
 - Internally illuminated with white LED's
 - Low voltage power supply located behind wall.

- 02** "REIGN" - Face Lit Remote Channel Letters
- 3M™ Silver 3630-121 Translucent Film applied to 1st surface of cut out 3/16" white acrylic faces (#2447)
 - NOTE: FACES WILL APPEAR AS SILVER DURING DAY, AT NIGHT "REIGN" WILL ILLUMINATE WHITE*
 - 1" Black Jewelite trimcap
 - 5" Deep white .040 aluminum coil side returns Painted to match Black
 - Internally illuminated with white LED's
 - Low voltage power supply located behind wall.

- 03** "CAR WASH" - Face Lit Remote Channel Letters
- Digitally Printed & Laminated 3M Clear Vinyl applied to 1st surface of cut out 3/16" white acrylic faces (#2447)
 - 1" Black Jewelite trimcap
 - 5" Deep white .040 aluminum coil side returns Painted Black
 - Internally illuminated with white LED's
 - Low voltage power supply located behind wall.





Section Detail
O-3 Scale | NTS

- 01 -Appropriate Non-Corrosive Hardware into Building Structure (TBD)
- 02 -Flexible Conduit or Rigid EMT
- 03 -Junction Box
- 04 -Primary Disconnect Switch Located between Sign & Power Panel
- 05 -Metal Enclosure Located Behind Building Fascia / Wall
- 06 -Power Supply Located Inside Enclosure
- 07 -.040 thk Aluminum Letter Returns Painted Black
- 08 -Trim Cap: 1: wide plastic Color: Black
- 09 -3/16" White Polycarbonate faces w/ trans vinyl applied 1st surface
- 10 -3mm thk AcM letter back
- 11 -White LED Modules taped to back of letters
- 12 -Wall Penetration Fill w/ Silicone
- 13 1/4" Dia Drain Holes

- ✓ All Mounting Hardware to be Non-Ferrous Metal
- ✓ All Penetrations Thru Surfaces to be Watertight
- ✓ All Signage to be UL Listed, Classified

NOTES

- ✓ PRIMARY ELECTRIC BY OTHERS TO BE WITHIN 3'-0" OF SIGN (TYP)
- ✓ CLEAR & UNOBSTRUCTED ACCESS REQUIRED BEHIND WALL FOR REMOTE/ RACEWAY WIRING
- ✓ ADEQUATE BLOCKING BEHIND WALL REQUIRED BY OTHERS
- ✓ SIGN WIRING INSTALLED IN FIELD TO MAINTAIN ALL STATE & LOCAL CODES/ REGULATIONS



3013 Cranberry Highway
Wareham MA 02538

ACCT #: 15906

DWG #1

PERMIT

Note: This photo reimage is intended for visual communication of signage intent depicted in it's completed/installed setting. This is not intended to be an accurate scaled drawing. Although the proper scale is attempted-we are not responsible for conflicts in final visual results.

Color Palette | Pantone • Paint • Vinyl

- HEX #: 59595b
- HEX #: bcbec0
- HEX #: 49a5dc

Typography

Sweet Sans Pro
Heavy | 0 Kerning | 0 Spacing
ABCDEFGHIJKLMNOPQRSTUVWXYZ
abcdefghijklmnopqrstuvwxyz
0123456789#!&



Your Brand Realized™

251 Boot Road
Downingtown, PA 19335

610.518.5881
610.518.5244
info@prosign.net

TYPICAL CHANNEL LETTERS SECTION | DETAIL

REVISIONS:

PM: JD
DESIGNER: DK

DATE: 7/19/2021

Copyright, Pro Sign Company, 2021
THIS DRAWING INCLUDES DATA THAT IS PROPRIETARY INFORMATION OF PRO SIGN COMPANY. IT SHALL NOT BE USED, DUPLICATED OR DISCLOSED IN WHOLE OR PART FOR ANY PURPOSE OTHER THAN TO EVALUATE THIS PROPOSAL. IF A CONTRACT IS AWARDED TO THIS PROPOSER AS A RESULT OF OR IN CONNECTION WITH THE SUBMISSION OF THIS DATA, THE DEFEREE SHALL HAVE THE RIGHT TO USE OR DISCLOSE THE DATA TO THE EXTENT PROVIDED IN THE RESULTING CONTRACT.

Job File Locations

DWG:
Y:\R\REIGN Car Wash\SITES\MA\Wareham\15096\DESIGN\15096-1_PRM-REIGN CAR WASH_WAREHEM, MA.cdr



O-1 Proposed North View
Scale | NTS



O-2 Proposed West View
Scale | NTS



3013 Cranberry Highway
Wareham MA 02538

ACCT #: 15906

DWG #1

PERMIT

Note: This photo reimage is intended for visual communication of signage intent depicted in it's completed/installed setting. This is not intended to be an accurate scaled drawing. Although the proper scale is attempted-we are not responsible for conflicts in final visual results.



Your Brand Realized™

251 Boot Road
Downingtown, PA 19335



610.518.5881
610.518.5244
info@prosign.net

NORTH & WEST VIEW | PROPOSED ELEVATION

REVISIONS:

PM: JD
DESIGNER: DK

DATE: 7/19/2021

Copyright, Pro Sign Company, 2021
THIS DRAWING INCLUDES DATA THAT IS PROPRIETARY INFORMATION OF PRO SIGN COMPANY. IT SHALL NOT BE USED, DUPLICATED OR DISCLOSED IN WHOLE OR PART FOR ANY PURPOSE OTHER THAN TO EVALUATE THIS PROPOSAL. IF A CONTRACT IS AWARDED TO THIS PROPOSER AS A RESULT OF OR IN CONNECTION WITH THE SUBMISSION OF THIS DATA, THE DEFEREE SHALL HAVE THE RIGHT TO USE OR DISCLOSE THE DATA TO THE EXTENT PROVIDED IN THE RESULTING CONTRACT.

Job File Locations

DWG:
Y:\R\REIGN Car Wash\SITES\MA\Warehem\15096\DESIGN\15096-1_PRJ-REIGN CAR WASH_WAREHEM, MA.cdr