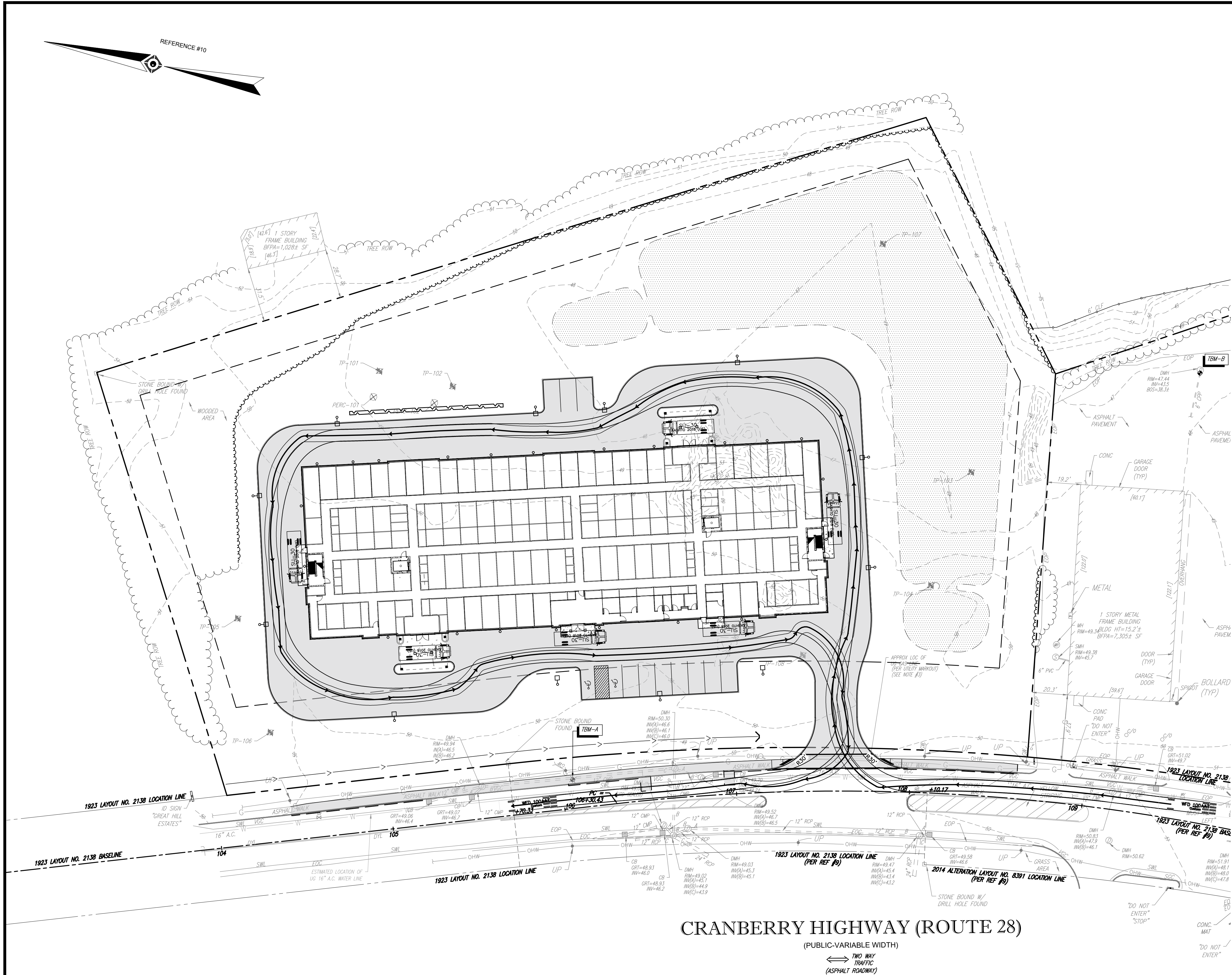
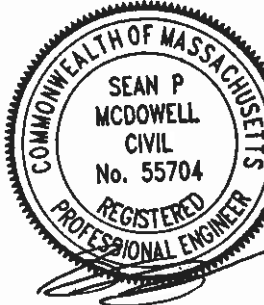


J:\95561.00 - Brady Sullivan Portfolio\Portfolio\95561.15 - 2400-2402 Cranberry Hwy - Northern MA\CAD\Drawings\border.dwg 4/24/2023 1:17 PM



nobis

Nobis Group®  
565 Middlesex Street  
Lowell, MA 01851  
T(978) 683-0891  
www.nobis-group.com



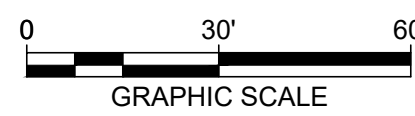
NOT ISSUED  
FOR  
CONSTRUCTION

### TRUE STORAGE FACILITY

2400 & 2402  
CRANBERRY HWY  
WAREHAM, MASSACHUSETTS

6	04/19/23	RESPONSE TO FIRE DEPARTMENTS COMMENT
5	04/05/23	RESPONSE TO TOWN COMMENTS
4	03/20/23	RESPONSE TO TOWN COMMENTS
3	11/09/22	RESPONSE TO MASSDOT COMMENTS
2	10/26/22	RESPONSE TO MASSDOT COMMENTS
1	07/18/22	RESPONSE TO MASSDOT COMMENTS
NO.	DATE	DESCRIPTION

#### REVISIONS



DATE:	APRIL 2022
NOBIS PROJECT NO.	95561.15
DRAWN BY:	SM
CHECKED BY:	CK
CAD DRAWING FILE:	X-95561.15-BORDER.dwg
SHEET TITLE	

FIRE APPARATUS  
SWEEP PATH PLAN

SHEET

C-2A