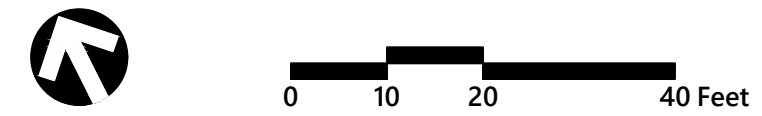
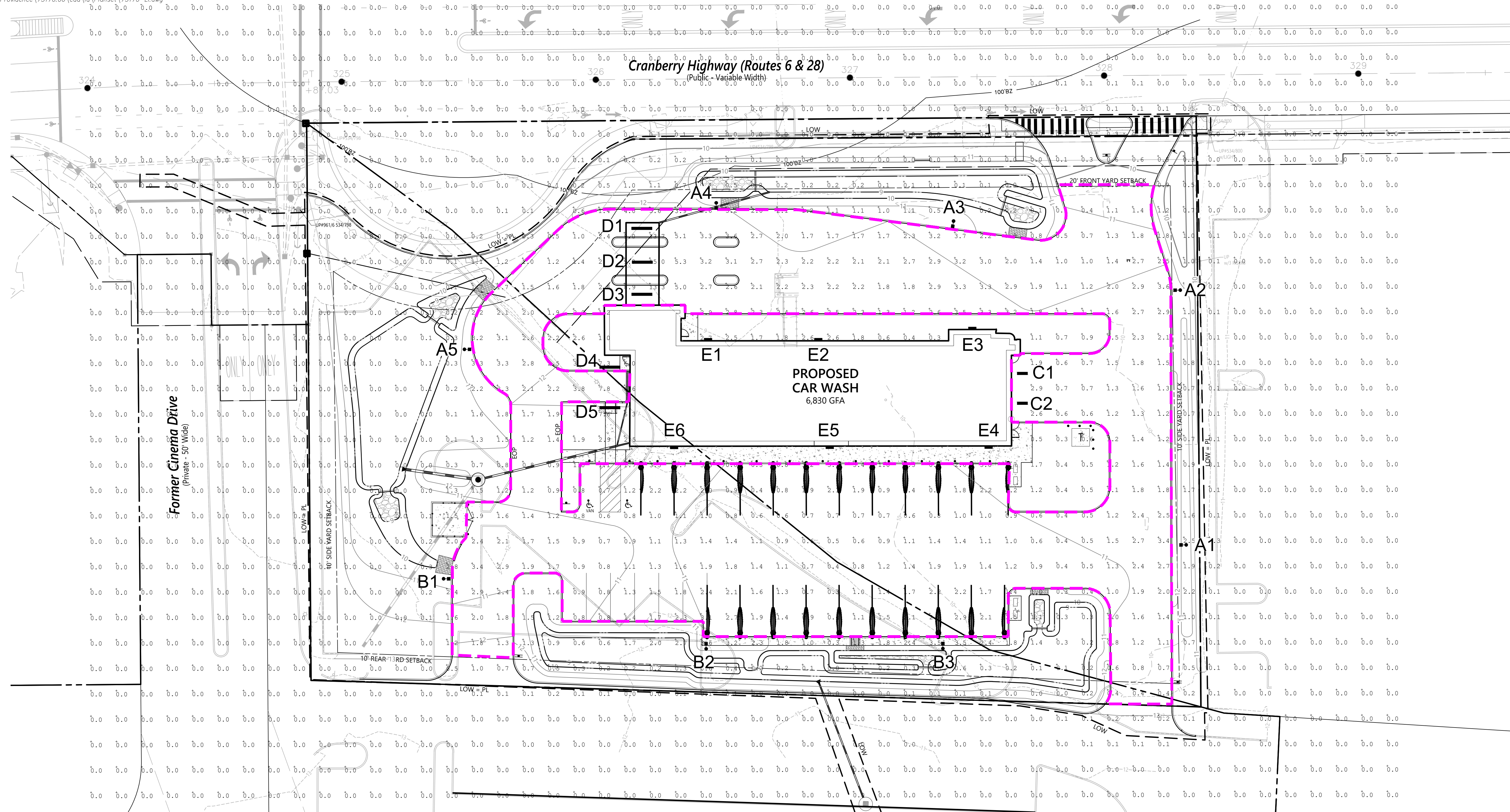




1 Cedar Street
Suite 400
Providence, RI 02903
401.272.8100



**Reign Car Wash,
Wareham**
3013 Cranberry Highway
Wareham, Massachusetts

No.	Revision	Date	Appr.
1	Response To Town Comments	9/15/2021	
2	Response To Town Comments	10/1/2021	

Designed by: _____ Checked by: _____
Issued for: _____ Date: _____
Permits June 28, 2021

Not Approved for Construction
Drawing Title: **Lighting Plan**

L4.00

LIGHT FIXTURE AND POLE SPECIFICATIONS

<p>Fixture A Manufacturer: Beacon Lighting Fixture: VPL LED Engine: 64L-135 Color Temperature: 4,000k Distribution: Type 3 Finish: Black Matte Textured Pole Height: 20' Options: BC (Backshield)</p>	<p>Fixture C Manufacturer: G&G Industrial Lighting Fixture: GPX - 2ft Lumen Output: Standard Color Temperature: 4,000k Mounting Height: +/- 10 feet</p>	<p>Fixture E Manufacturer: US Architectural Fixture: RZR-WM1 Optics: 4 Color Temperature: 4,000k Drive Current: 350ma Finish: Black Mounting Height: +/- 10 feet</p>
<p>Fixture B Manufacturer: Beacon Lighting Fixture: VPL LED Engine: 64L-135 Color Temperature: 4,000k Distribution: Type 4 Finish: Black Matte Textured Pole Height: 20' Options: BC (Backshield)</p>	<p>Fixture D Manufacturer: G&G Industrial Lighting Fixture: GPX - 8ft Lumen Output: Standard Color Temperature: 4,000k Mounting Height: +/- 10-14 feet</p>	

STATISTICAL AREA SUMMARY

Grid Type: Horizontal Illuminance at finish grade.
Grid Units: Footcandles

Statistical Area	Avg	Max	Min	Avg/Min	Max/Min
1 Parking Lot	1.91	15.00	0.30	6.37	50.00

Statistical Boundary - - - - -

Disclaimer:
This analysis was calculated in accordance with published IES calculation methods and procedures with the data as entered by the user. This analysis is based on tested IES photometric data, light loss factors as defined in the LLF value. This analysis is a mathematical model of real life situations, and it can be only as accurate as the model itself. Calculated values may vary from actual measurements in certain situations. VHB is not responsible for light output deviations due to light source, or other variables.

