



WINSLOW DUPLEX  
FRONT ELEVATION

SCALE: 1/4" = 1'-0"



WINSLOW DUPLEX  
RIGHT ELEVATION

SCALE: 1/4" = 1'-0"



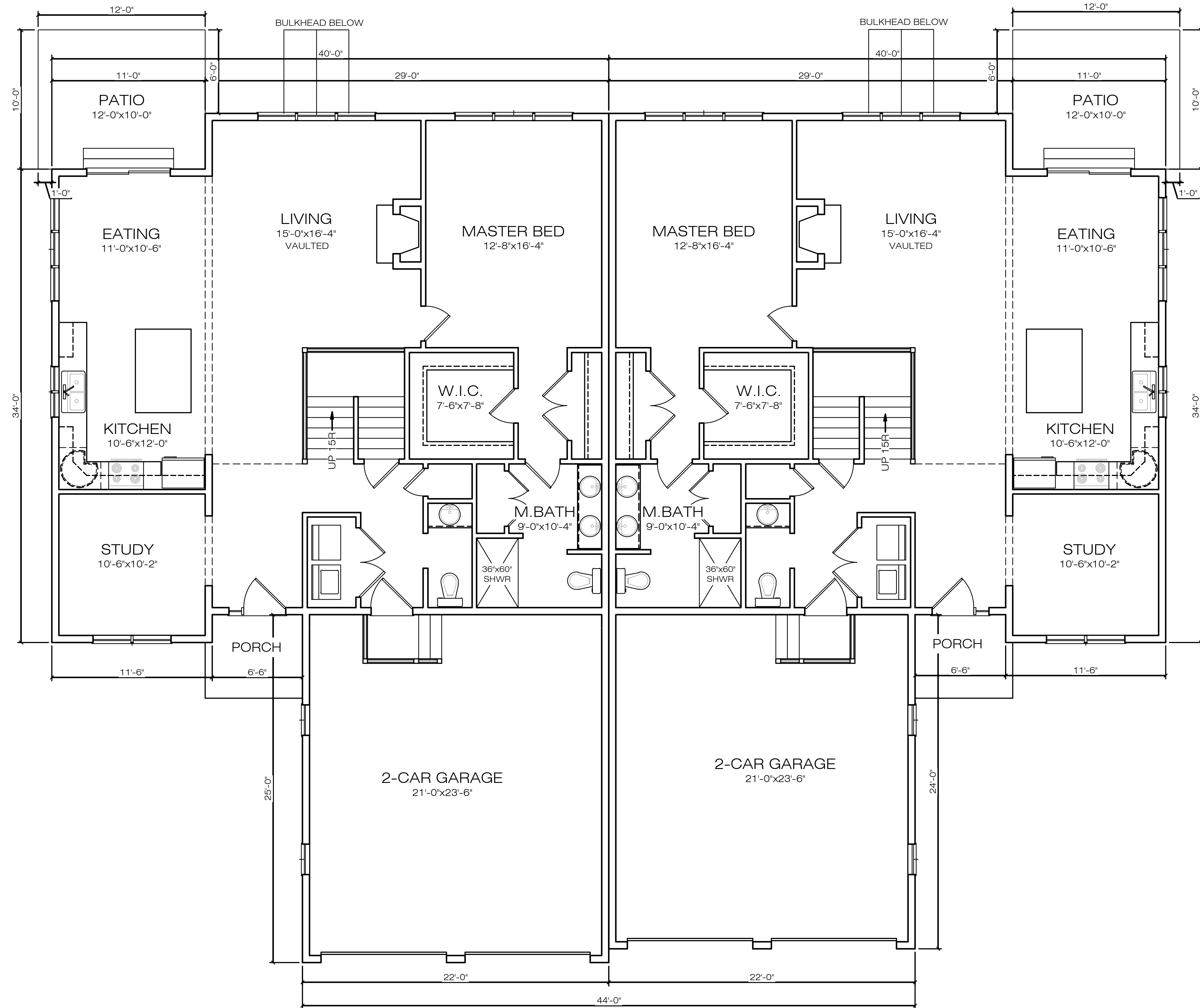
WINSLOW DUPLEX  
REAR ELEVATION

SCALE: 1/4" = 1'-0"

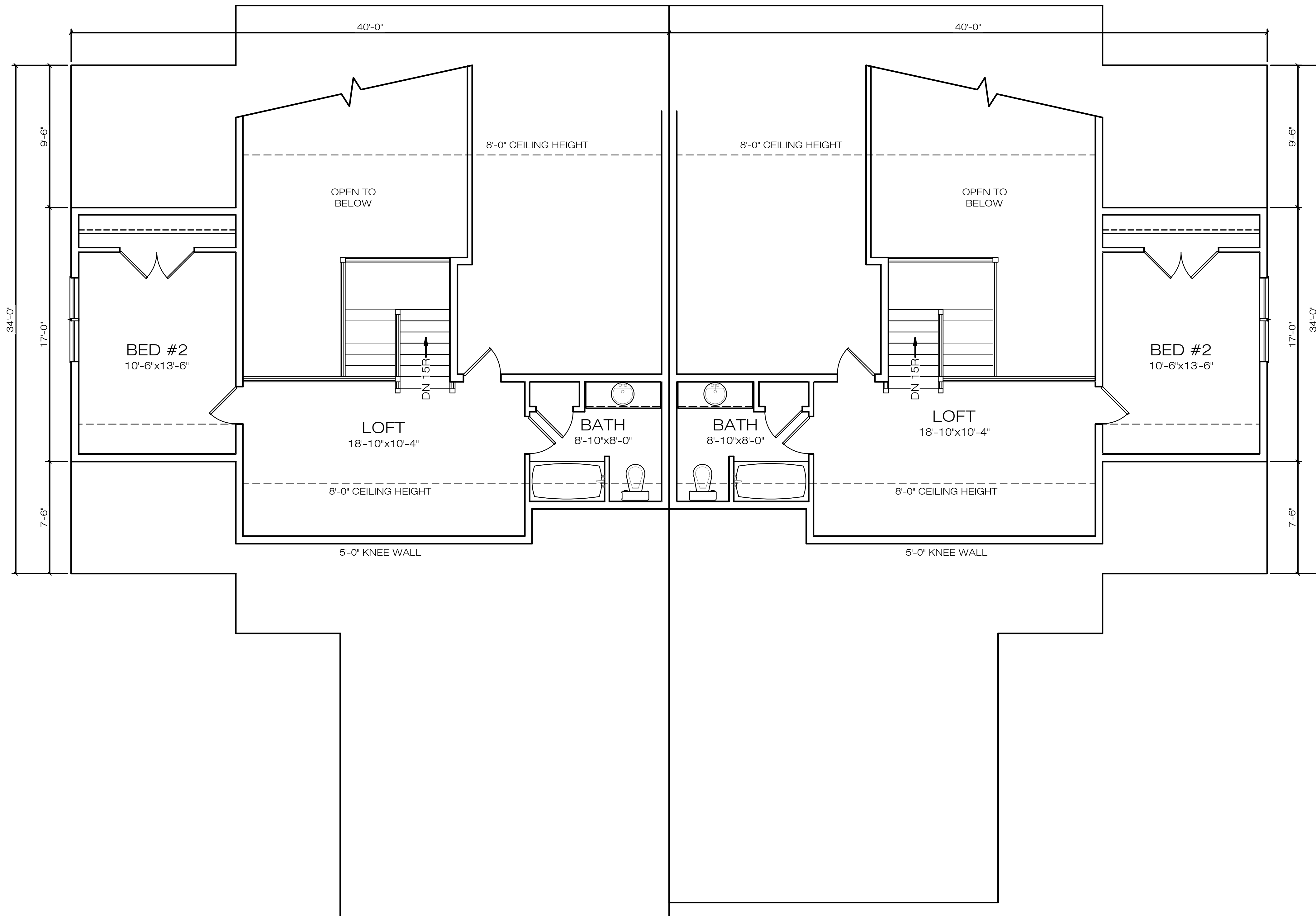


WINSLOW DUPLEX  
LEFT ELEVATION

SCALE: 1/4" = 1'-0"



**WINSLOW DUPLEX**  
**FIRST FLOOR PLAN**  
 9'-0" CEILING HEIGHT  
 1,419 SQ. FT.



**WINSLOW DUPLEX  
SECOND FLOOR PLAN**

8'-0" CEILING HEIGHT  
556 SQ FT (2 BED)