


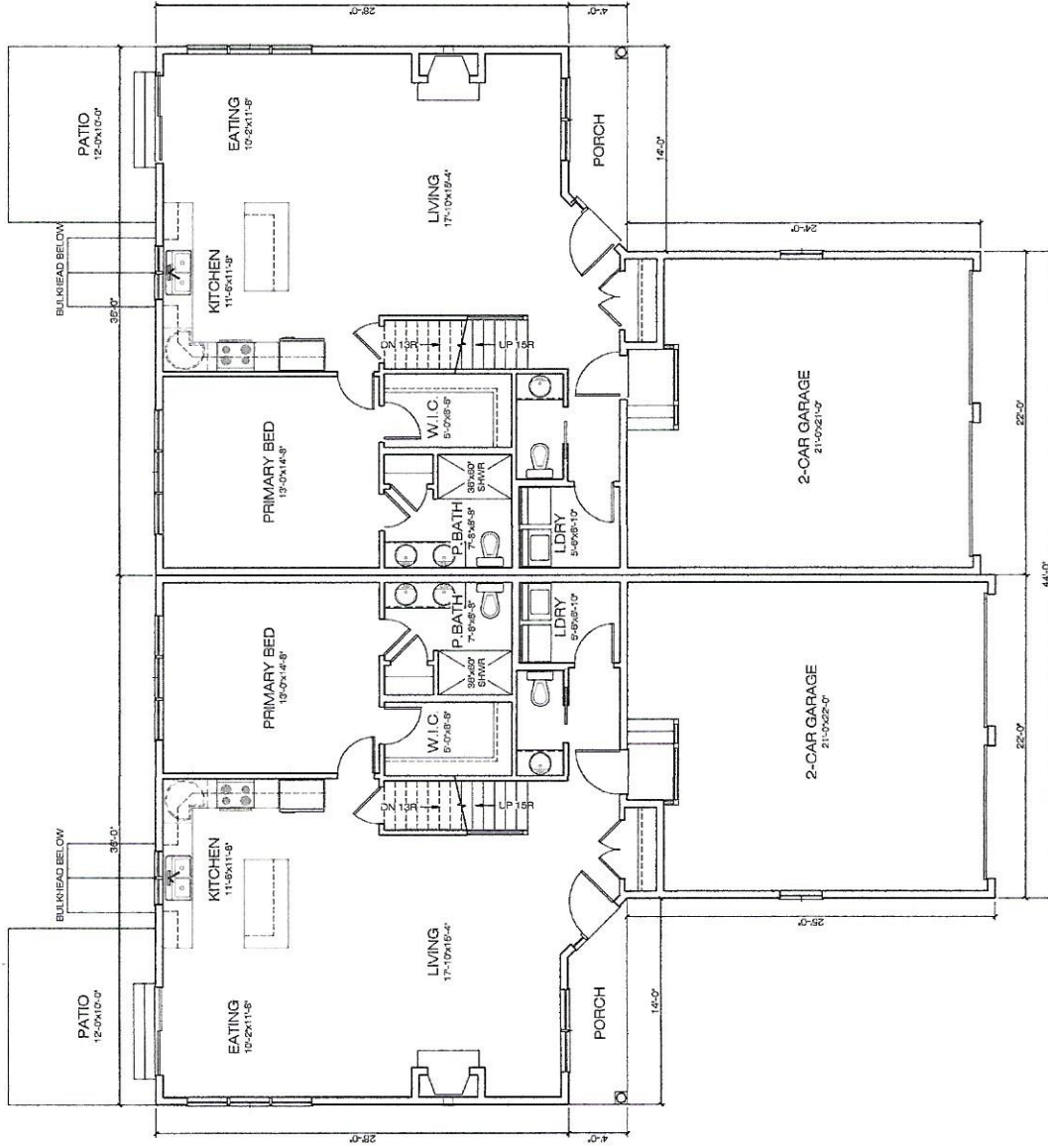

**BREWSTER FRONT ELEVATION**  
 1/32" SCALE PER UNIT

Scale:	1/32" = 1'-0"
Date:	2021-05-03
Drawn By:	CG
Checked By:	CM
Job Number:	20009
Drawing:	DD7


**ARCHITECTS, INC.**  
 6 WALKER DRIVE, SUITE 200  
 PLAINVILLE, MA 02762 508-805-5800

**BREWSTER DUPLEX**  
**WAREHAM DUPLEXES**

© 2021 CME Architects, Inc. All rights reserved. This drawing is the property of CME Architects, Inc. It is to be used only for the project and location specified. No part of this drawing may be reproduced or transmitted in any form or by any means, electronic or mechanical, including photocopying, recording, or by any information storage and retrieval system, without the prior written permission of CME Architects, Inc.



**BREWSTER FIRST FLOOR PLAN**

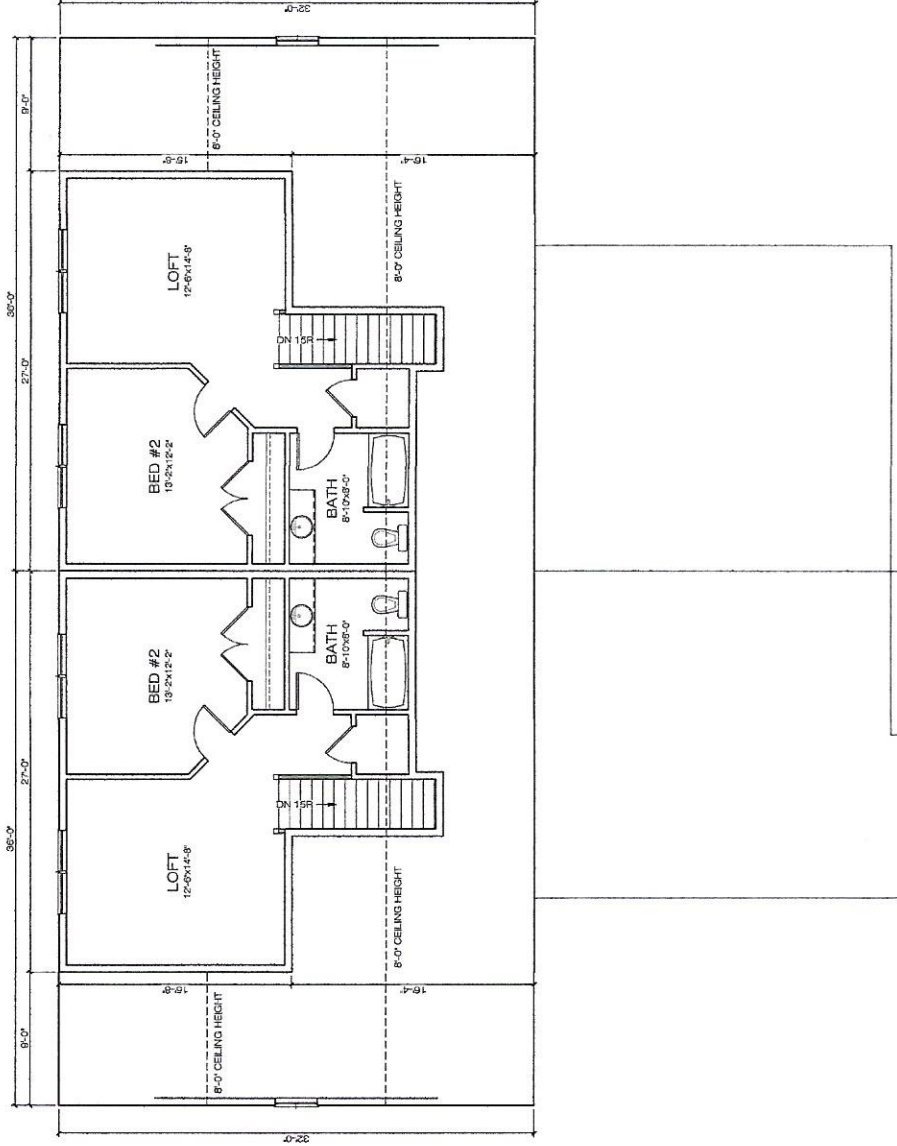
1'-0" = 8'-0" PER UNIT  
 8'-0" CEILING HEIGHT

# BREWSTER DUPLEX WAREHAM DUPLEXES

Scale:	K' = 1'-0"
Date:	2021-05-03
Drawn By:	CG
Checked By:	CM
Job Number:	200009
Drawing:	<b>DD8</b>

**CME**  
**ARCHITECTS, INC.**  
 6 WILKINS DRIVE, SUITE 210  
 PLAINVILLE, MA 02762 508-809-3509

©2021 CME Architects, Inc. All rights reserved. This drawing is the property of CME Architects, Inc. and is not to be used, copied, or reproduced in any form without the written permission of CME Architects, Inc. The information contained herein is for informational purposes only and does not constitute an offer of any financial product or service. The information contained herein is not intended to be used as a basis for any investment decision. The information contained herein is not intended to be used as a basis for any investment decision. The information contained herein is not intended to be used as a basis for any investment decision.



**B BREWSTER SECOND FLOOR PLAN**  
DATE: 05/03/2021  
 DRAWN BY: CG  
 CHECKED BY: CM  
 JOB NUMBER: 20009

# BREWSTER DUPLEX WAREHAM DUPLEXES

Scale:	$1/8" = 1'-0"$
Date:	2021-05-03
Drawn By:	CG
Checked By:	CM
Job Number:	20009
Drawing:	<b>DD9</b>

**CME ARCHITECTS, INC.**  
 6 WILKINS DRIVE, SUITE 210  
 PLAINVILLE, MA 02762 508-809-3509