



Consulting Engineers  
278 Washington Street  
Weymouth, MA 02188  
Phone: (781) 331-5898  
www.WAM-Engineers.com



\*SCAN QR CODE FOR DIGITAL FILE\*

Rev.	Date	Description	NAME
01	6/6/22	Description	MKS

NEW DUPLEXES  
ANGELA MCKEOWN  
386-388 MAIN STREET  
WAREHAM, MA

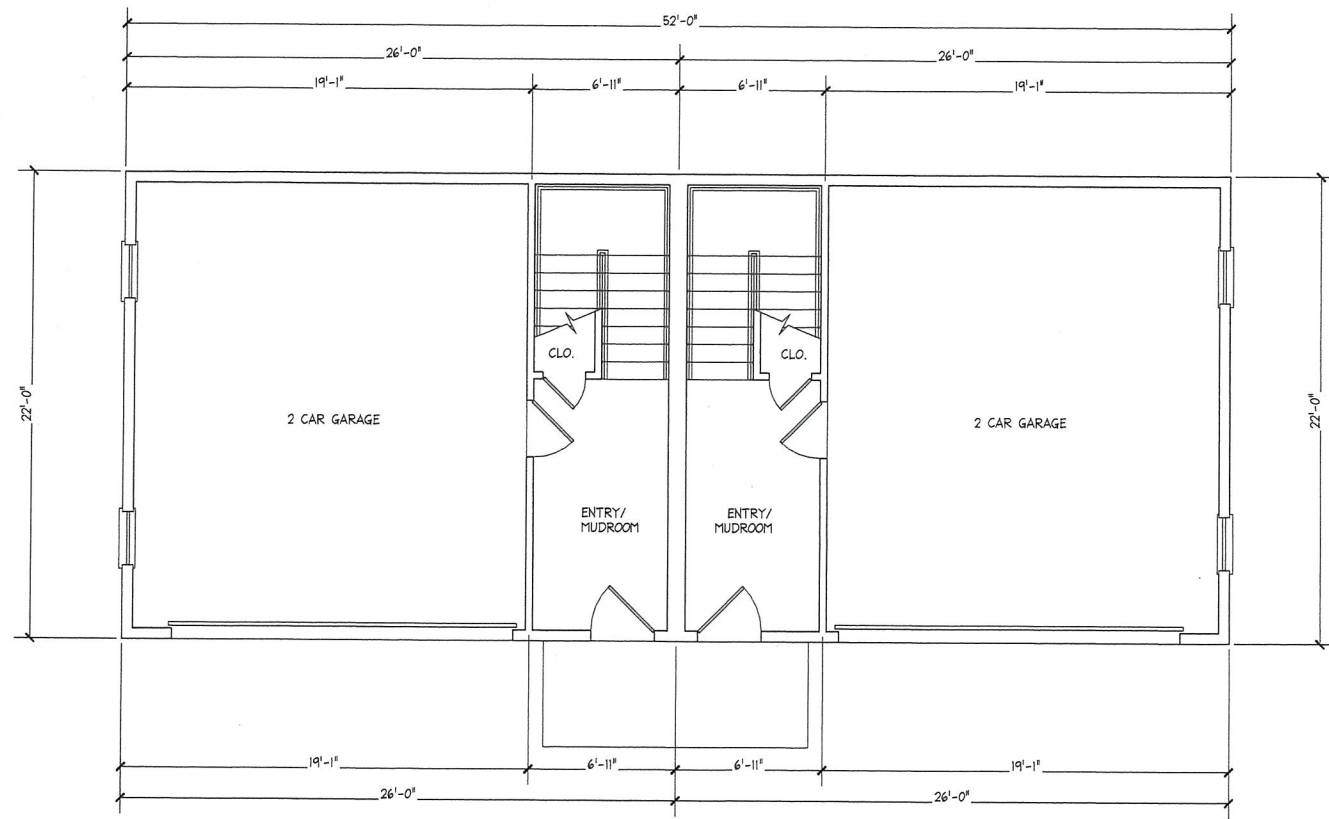
PROPOSED  
FRONT ELEVATION

SCALE	1/4" = 1'-0"
DRAWN by	MKS
CHECKED by	MKS
PROJECT No.	2022-185

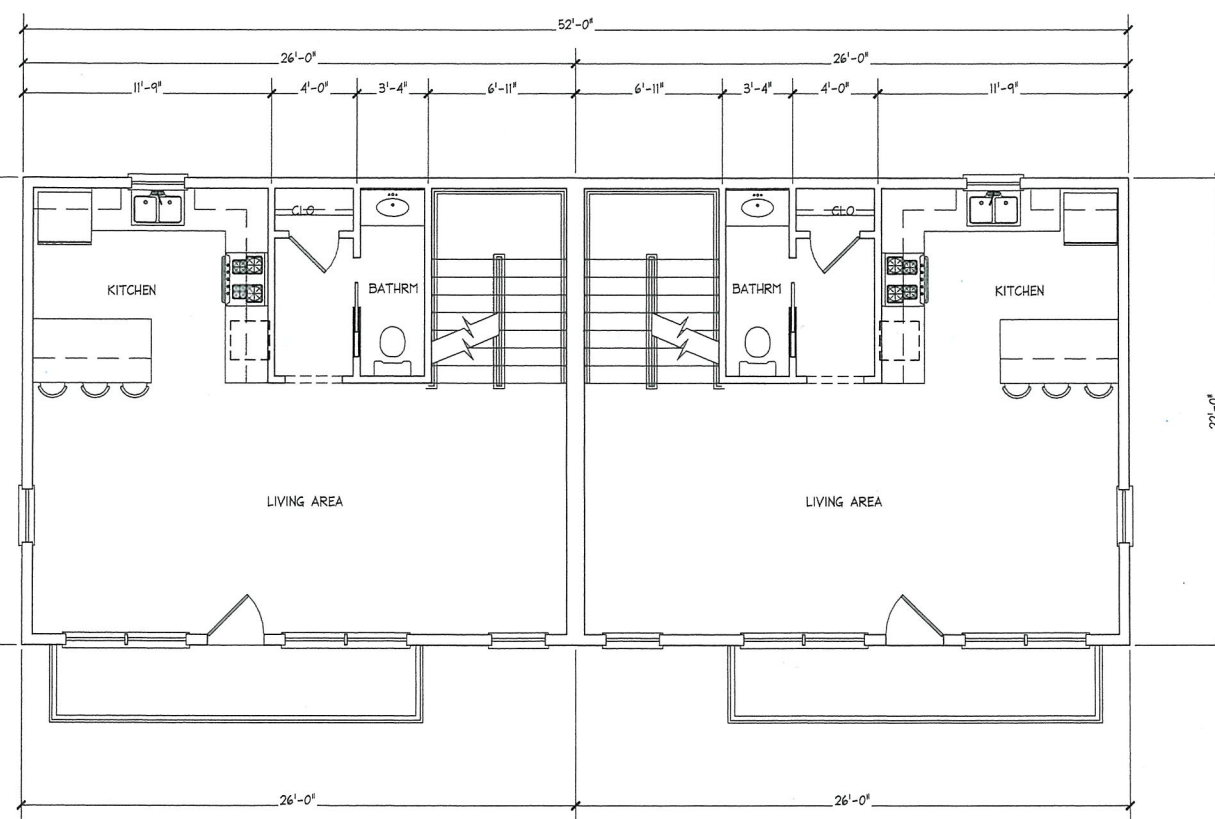
A-1



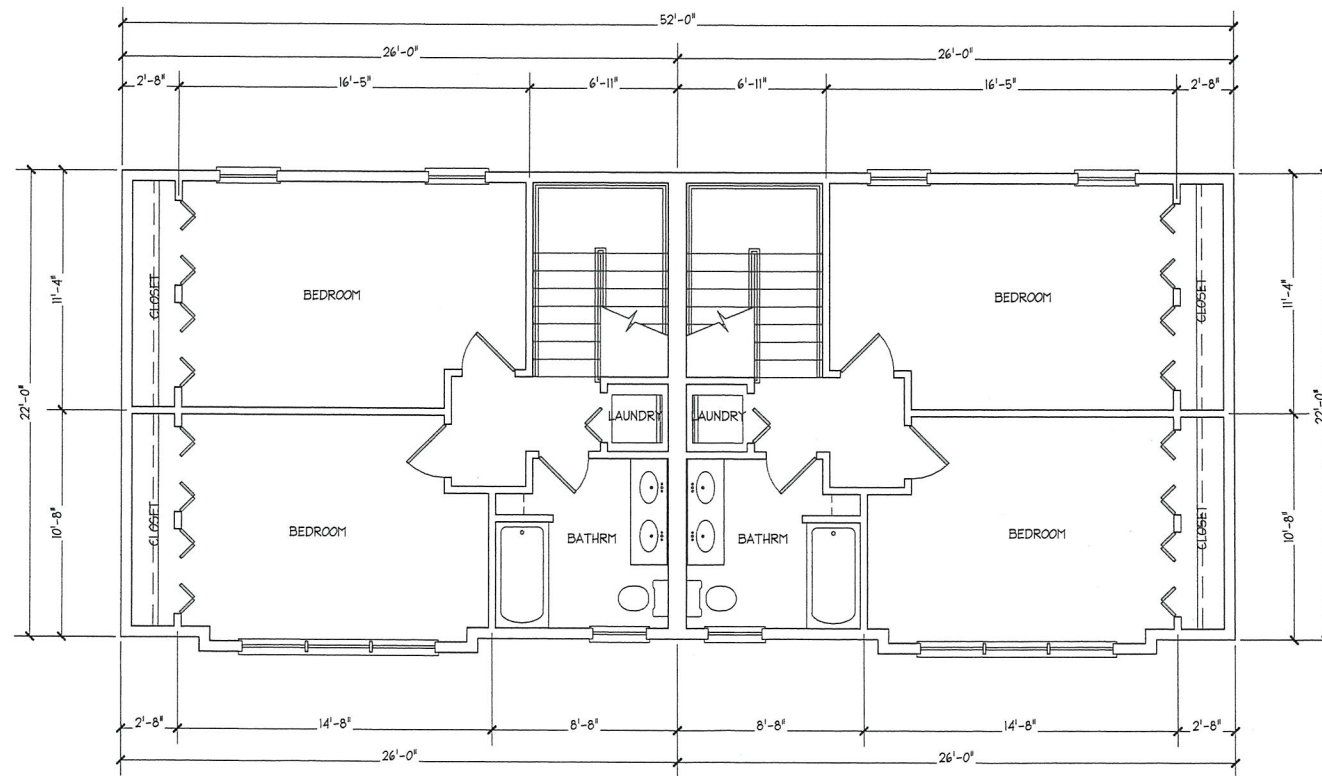
PROPOSED  
FRONT ELEVATION  
SCALE: 1/4" = 1'-0"



PROPOSED  
GRADE LEVEL FLOOR PLAN  
SCALE: 1/4" = 1'-0"



PROPOSED  
FIRST FLOOR PLAN  
SCALE: 1/4" = 1'-0"



PROPOSED  
SECOND FLOOR PLAN  
SCALE: 1/4" = 1'-0"



Consulting Engineers  
278 Washington Street  
Weymouth, MA 02188  
Phone: (781) 331-5898  
www.WAM-Engineers.com



\*SCAN QR CODE FOR DIGITAL FILE\*

Rev.	Date	Description	NAME
01	6/6/22	description	MKS

**NEW DUPLEXES**  
**ANGELA MCKEOWN**  
386-388 MAIN STREET  
WAREHAM, MA

PROPOSED  
FLOOR PLANS

SCALE:	1/4" = 1'-0"
DRAWN by:	MKS
CHK'D by:	MKS
PROJECT No:	2022-185