

LEGEND

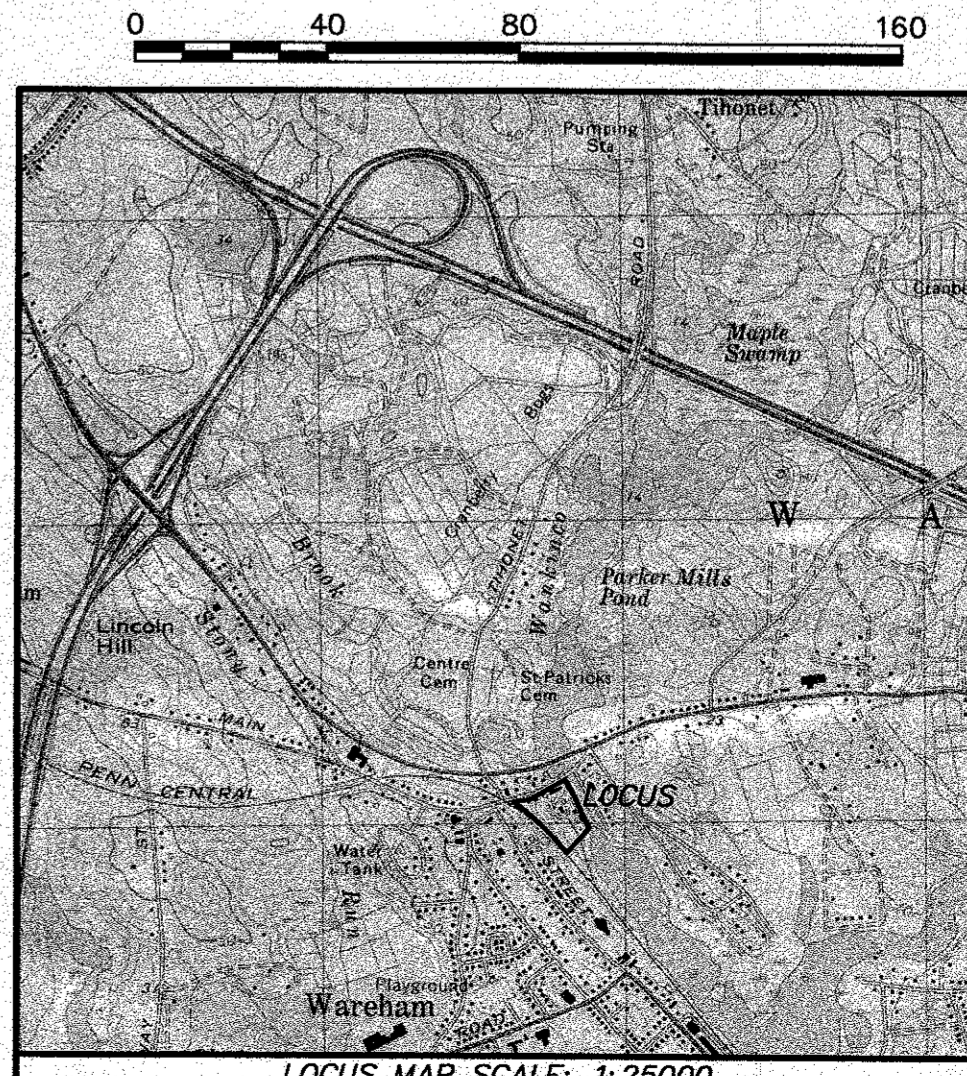
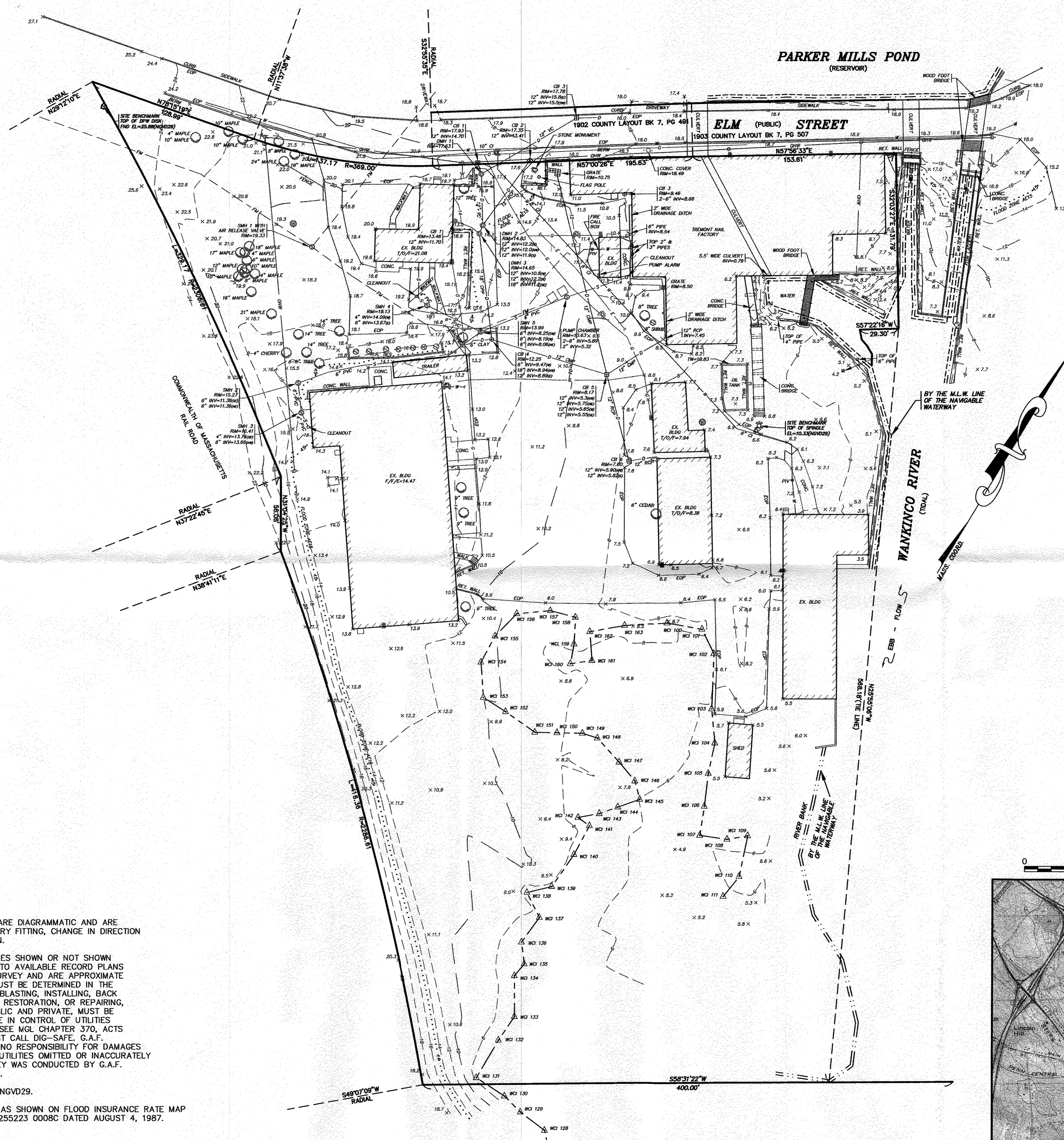
EXISTING	DESC.
	CONTOURS
	SPOT GRADES
	WETLANDS
	F.E.M.A. FLOOD ZONE
	DITCH/SWALE
	DRAIN LINE
	CATCH BASIN (CB)
	DRAIN MANHOLE (DMH)
	SEWER LINE
	SEWER MANHOLE (SMH)
	ELECTRIC LINE
	ELECTRIC MANHOLE (EMH)
	OVERHEAD WIRES
	UTILITY POLE
	GUY POLE
	WATER GATE/VALVE
	WATER SHUTOFF/CURB STOP
	FIRE HYDRANT
	GAS GATE/VALVE
	GAS SHUTOFF
	GAS METER
	WATER LINE
	GAS LINE
	FORCE MAIN
	LIGHT POLE
	SIGN
	FENCE
	BOUND
	IRON PIPE/PIN/ROD
	DRILLHOLE
	PIV
	STONEWALL
	TREELINE

ABBREVIATIONS

APPROX	APPROXIMATE
BB	BOTTOM OF BERM
BC	BOTTOM OF CURB
BIT CONC	BITUMINOUS CONCRETE
BLDG	BUILDING
BVW	BORDERING VEGETATED WETLAND
BW	BOTTOM OF WALL
CB	CATCH BASIN
CB/DH	CONCRETE BOUND/DRILL HOLE
CCB	CAPE COD BERM
CEM CONC	CEMENT CONCRETE
CIP	CAST IRON PIPE
CLF	CHAIN LINK FENCE
CLDI	CEMENT LINED DUCTILE IRON
CMP	CORRUGATED METAL PIPE
CPP	CORRUGATED PLASTIC PIPE
CO	COUNTY LAYOUT
CULV	CULVERT
D	DRAIN
DIA	DIAMETER
DIP	DUCTILE IRON PIPE
DMH	DRAIN MANHOLE
E	ELECTRIC
EL. ELEV	ELEVATION
EMH	ELECTRIC MANHOLE
EOP	EDGE OF PAVEMENT
EX	EXISTING
FDN	FOUNDATION
FE	FLARED END
F/F/E	FINISH FLOOR ELEVATION
FND	FOUND
G	GAS
GG, GV	GAS GATE, GAS VALVE
GRAN	GRANITE
GRND	GROUND
HSE	HOUSE
HYD	HYDRANT
INV	INVERT
MHB	MASSACHUSETTS HIGHWAY BOUND
MHD	MASSACHUSETTS HIGHWAY DEPARTMENT
MON	MONUMENT
NGVD	NATIONAL GEODETIC VERTICAL DATUM
N/F	NOW OR FORMALLY
OHW	OVERHEAD WIRE
PIV	POST INDICATOR VALVE
PVC	POLYVINYL CHLORIDE PIPE
PVMT	PAVEMENT
PWW	PAVED WATERWAY
R	RADIUS
RCP	REINFORCED CONCRETE PIPE
ROW	RIGHT OF WAY
RR	RAILROAD
RD	ROAD
S	SEWER
SB	STONE BOUND
SB/DH	STONE BOUND/DRILL HOLE
SMH	SEWER MANHOLE
STA	STATION
ST	STREET
SW	SIDEWALK
TC	TOP OF CURB
T/O/F	TOP OF FOUNDATION
TS	TOP OF SLOPE
TYP	TYPICAL
TW	TOP OF WALL
UP	UTILITY POLE
VC	VITRIFIED CLAY PIPE
W	WATER
WG, WV	WATER GATE, WATER VALVE

NOTES:

- IN GENERAL, THE PLANS ARE DIAGRAMMATIC AND ARE NOT INTENDED TO SHOW EVERY FITTING, CHANGE IN DIRECTION OR DETAIL OF CONSTRUCTION.
- ALL UNDERGROUND UTILITIES SHOWN OR NOT SHOWN WERE COMPILED ACCORDING TO AVAILABLE RECORD PLANS AND IN PART FROM FIELD SURVEY AND ARE APPROXIMATE ONLY. ACTUAL LOCATIONS MUST BE DETERMINED IN THE FIELD. BEFORE EXCAVATING, BLASTING, INSTALLING, BACK FILLING, GRADING, PAVEMENT RESTORATION, OR REPAIRING, ALL UTILITY COMPANIES, PUBLIC AND PRIVATE, MUST BE CONTACTED INCLUDING THOSE IN CONTROL OF UTILITIES NOT SHOWN ON THIS PLAN. SEE MGL CHAPTER 370, ACTS OF 1963. CONTRACTORS MUST CALL DIG-SAFE, G.A.F. ENGINEERING, INC. ASSUMES NO RESPONSIBILITY FOR DAMAGES INCURRED AS A RESULT OF UTILITIES OMITTED OR INACCURATELY SHOWN. TOPOGRAPHIC SURVEY WAS CONDUCTED BY G.A.F. ENGINEERING INC., MAY 2005.
- ALL ELEVATIONS ARE ON NGVD29.
- LOCUS IS AN AE15 ZONE AS SHOWN ON FLOOD INSURANCE RATE MAP COMMUNITY PANEL NUMBER 255223 0008C DATED AUGUST 4, 1987.



DATE: JUNE 1, 2005		DRAWN BY: PGM		CHECKED BY: GDA		JOB NO.: 05-6413		SCALE: 1" = 40'	
APPROVED BY:		APPROVED BY:		APPROVED BY:		APPROVED BY:		APPROVED BY:	
<p>G.A.F. ENGINEERING, INC. PROFESSIONAL ENGINEERS & LAND SURVEYORS 266 MAIN STREET - WAREHAM, MA 02571 TEL: (508) 295-6600 FAX: (508) 295-6634 E-MAIL: gaf-eng@verizon.net</p>									
JOB NO.: 05-6413		DWG. 1 OF 1		PREPARED FOR: TOWN OF WAREHAM COMMUNITY DEVELOPMENT		WAREHAM, MA		WAREHAM, MA	