

Annie Hayes
52 Farmer's Lane
West Wareham

Not new to anyone- replete throughout Wareham for years happening in plain sight.

Borrego Solar/New Leaf builds solar utilities on land of forest elimination, animal and plant destruction, increased vulnerability to our sole source aquifer and drastic change to the topography of Wareham.

Recently we got the wallop article showing how sea level rise will knock out parts of Wareham and cause sunny day flooding in many others. Only to get worse with time.

We are scientifically pointed to as one of two of the most vulnerable towns of southcoast to low level land flooding, salt water incursion, loss of marsh land, and further vulnerability to sea level rise.

Simultaneously there is the permitting of upland forest topography Lowered toward sea level with solar utilities pre-construction sand mining. Critically and cumulatively changing the land to severe susceptibility to chemical leaching from solar backsheet vulnerabilities, polymer

PFAS coating, and the moral degradation of production using polysilicon mined and processed for solar semiconductors that cannot be avoided in China's global supply chain market dominance using forced Uyghur and Tibetan labor. Any forced labor used in supply chain materials entering the US is prohibited under the Forced Labor Prevention Act in effect as of June 2022.

1. JA Solar and Hanwei solar panels are both involved in that supply chain. These are the two stated panel manufacturer in New Leaf/Borrego's submission. Contrary to the Wobley Whitten most recent document of "verification"

2. JA Solar module submitted is also coated with a DUPONT Tedlar hydrophobic film that is a PVF Polyvinyl fluoride polymer PFAS. FACT. This PVF is known to degrade into micro particles that then are relatively fixed in soil, documented to damage soil organisms, as well as having the potential to affect ground water that migrates into the aquifer and into private wells.

Without forest filtration of the water, and buffer along with the removed sand, any pollutant is that much more ACCESSIBLE to the Aquifer and wells.

In addition the Material Safety Data Sheet for JA is a sheet developed with no scientific or third party validation. It is a list of statements made by the manufacturer of JA panels. T www.jasolar.com



We are spared the viewing of this because we are prohibited from the site. The process however was explained at the 140 Tihonet site walk when it was described that the site was planned, surveyed, location, vegetation etc.- ready to go. The final step was to core sample to sand beneath the forest and determine its

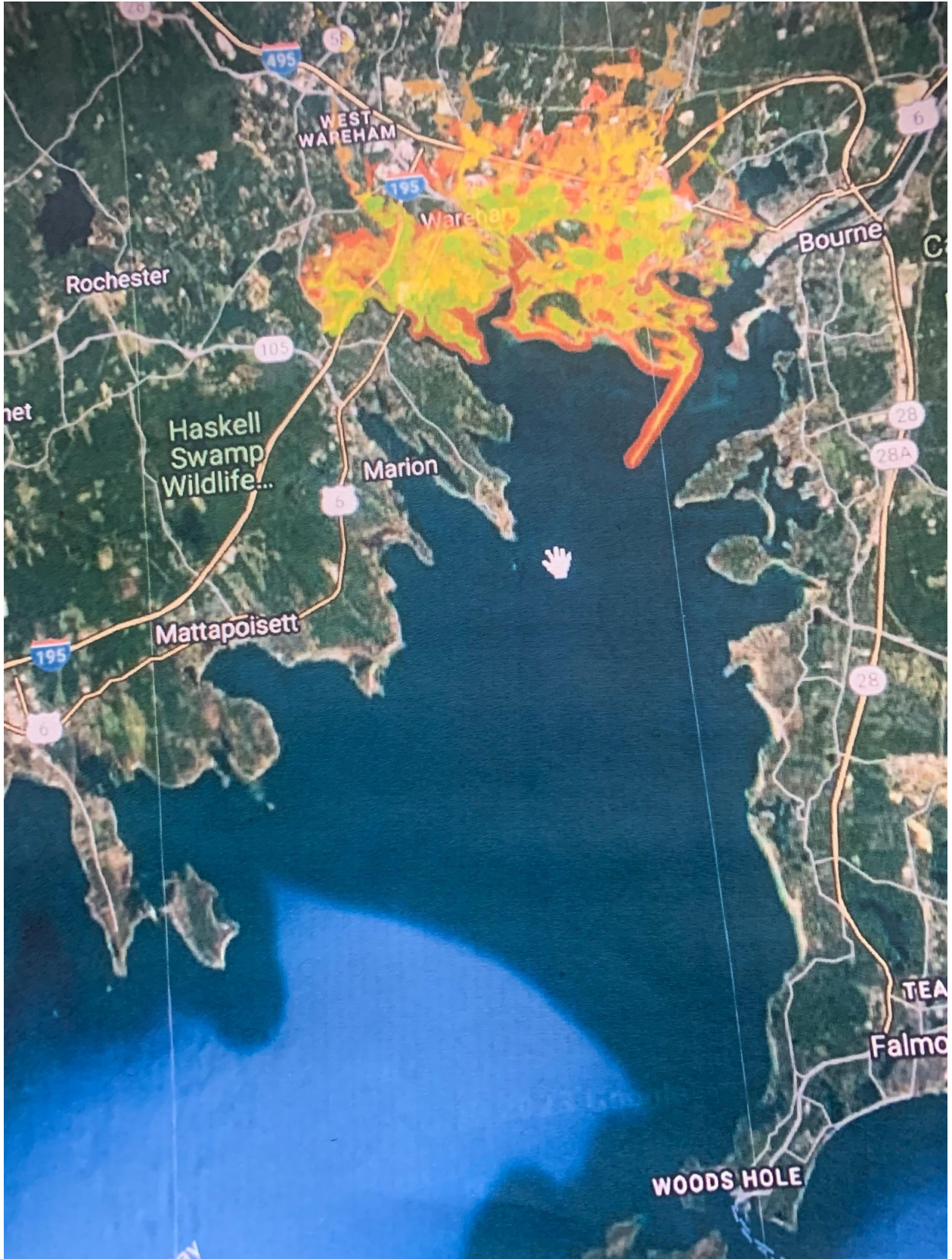
quality and quantity. Only then was the project greenlighted by ADM. At 140 Tihonet, participants recall that the average elevation for the whole project was said to be between 30 and 10 feet, excavated for sand in some spots by 15'. The site plan would have the information.

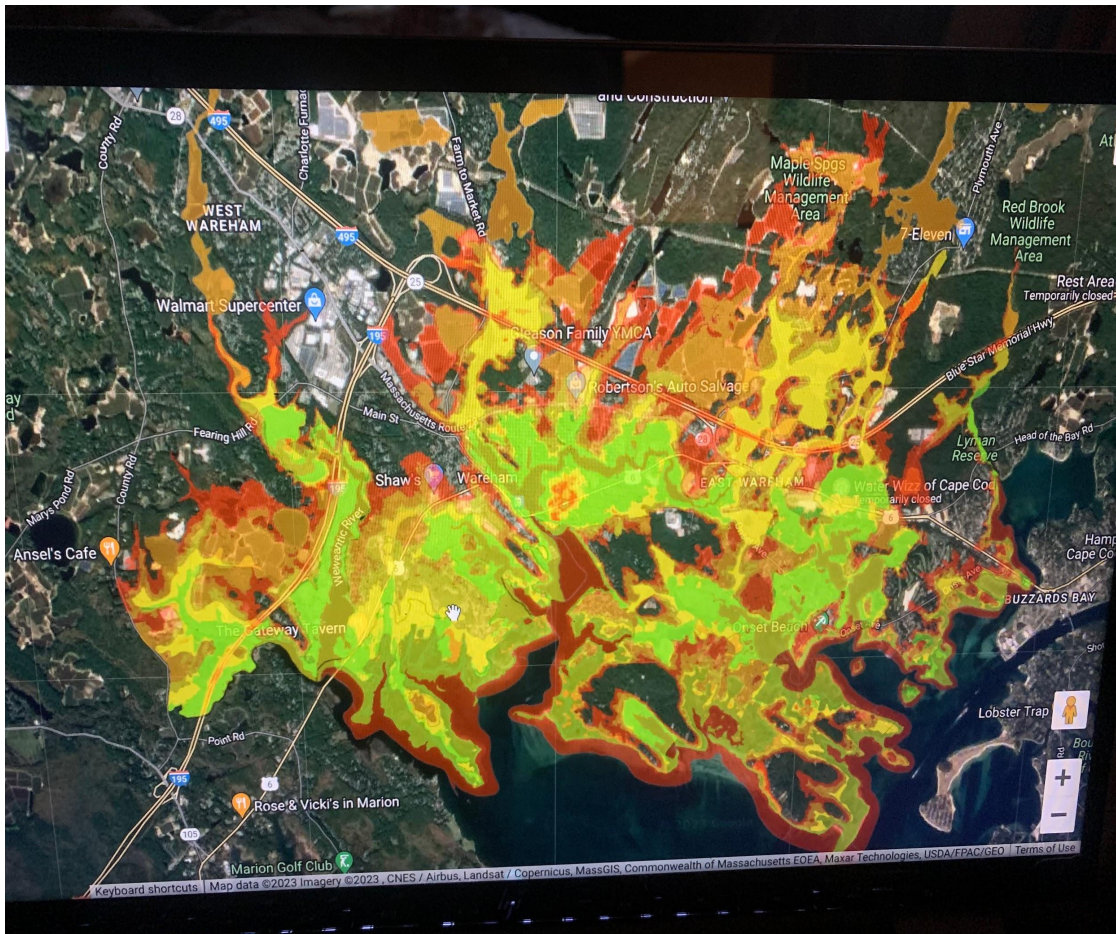
Wareham's INTERCONNECTION PROBLEM

The FUNNEL

The following maps show flood vulnerability to Wareham and how it's all Connected. The article most recently published in the globe, Boston.com Wareham Week says that

“As storms enter the bay, a funnel effect forces more water up through the Bay and into low lying neighborhoods and town centers...Due to Wareham's location and low lying infrastructure, a 10 year storm could inundate more than a quarter of all buildings in town as soon as 2050”.

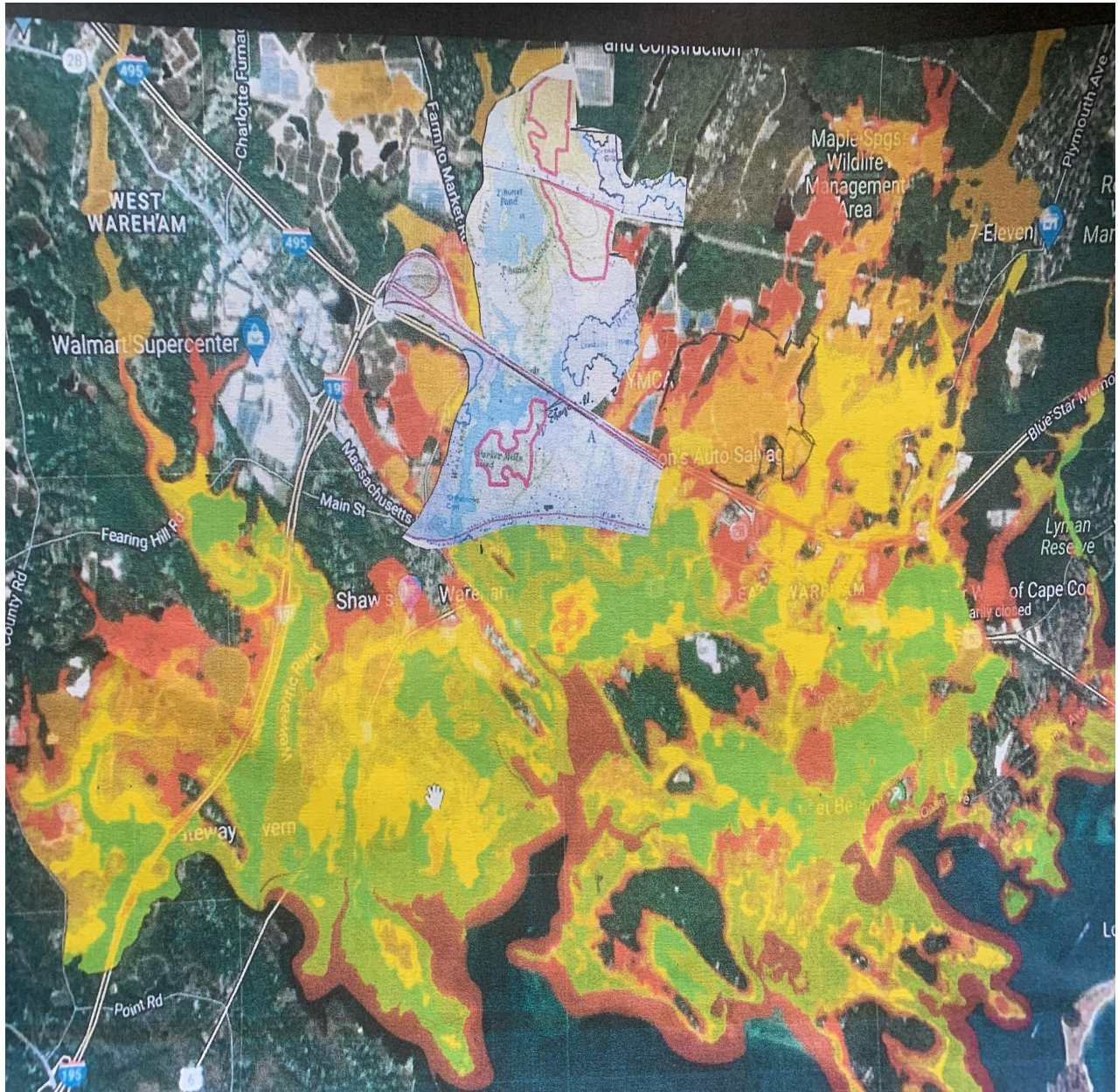




@

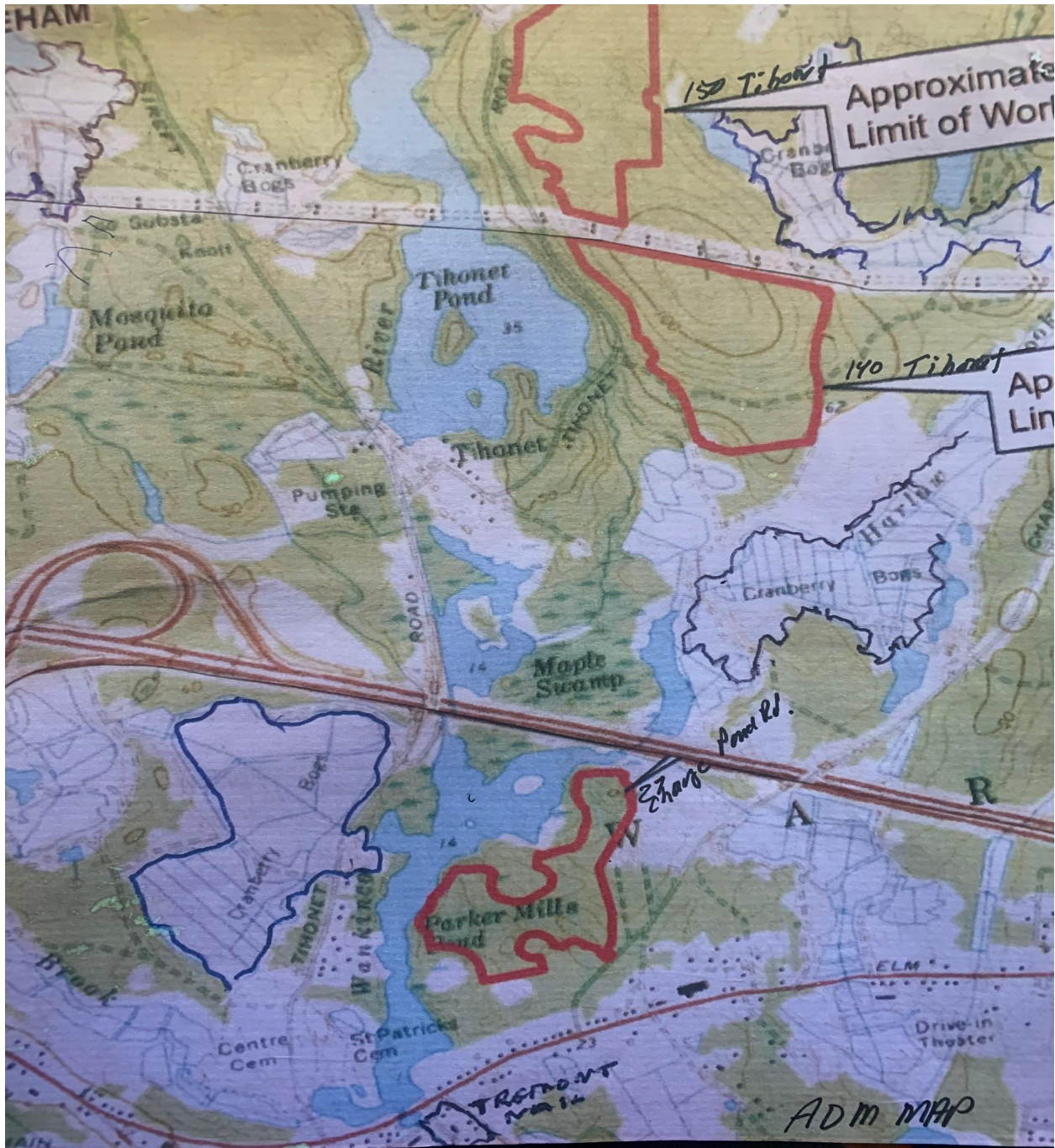
Two thirds up and above the @ is a green puzzle piece amidst the yellow flood indicator. That's 27 Charge Pond Road forest upland for solar. The larger green swatch above Charge Pond utility is the contiguous (I thought contiguous wasn't allowed) projects of 140 and 150 Tihonet. These projects are together 185 acres of destroyed

forestland and thousands of cubic meters of strip mined sand, as shown below.

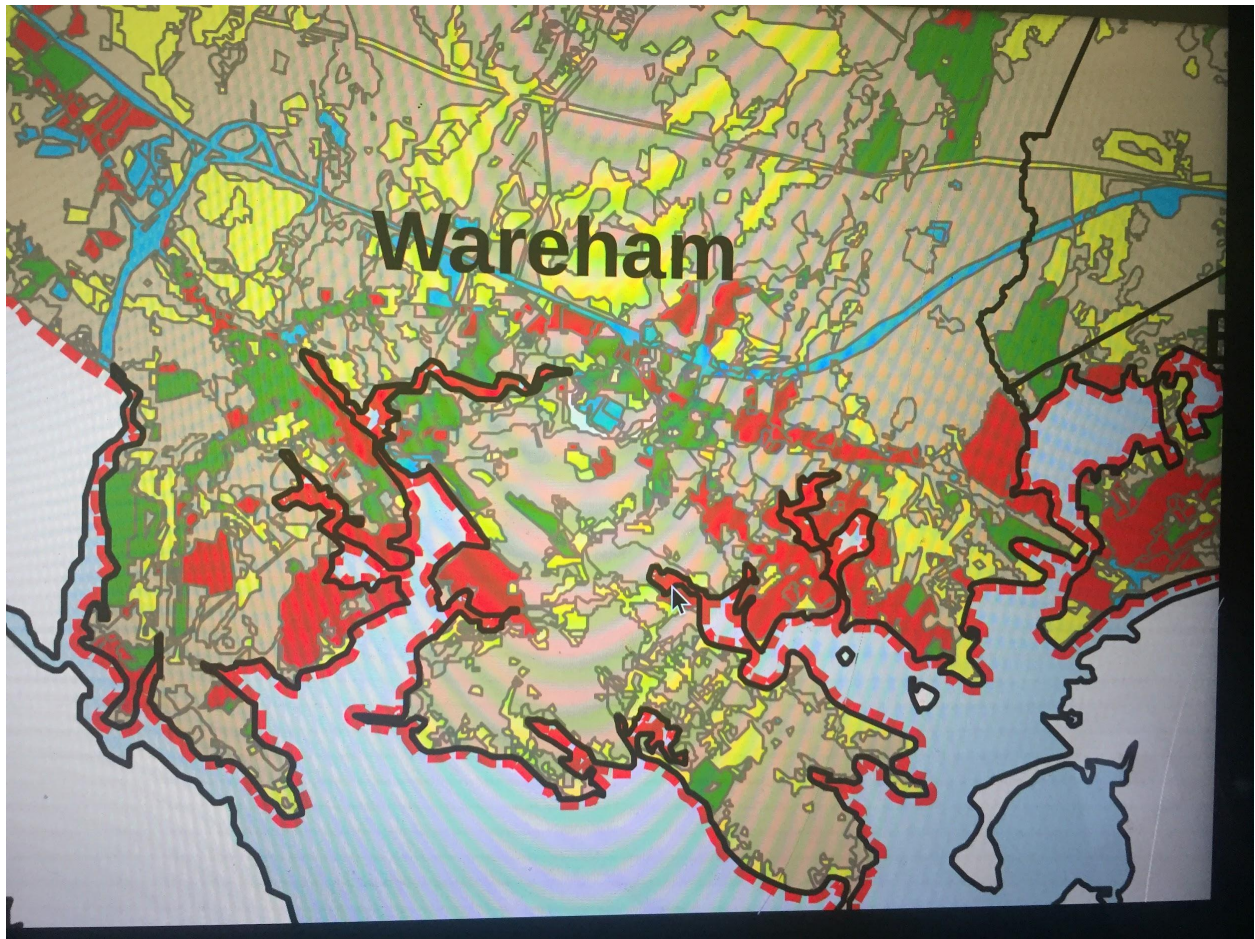


140, 150 Tihonet and 27 Charge Pond Utilities placed in flooding context.

And enlarged- to see how they interlock with bogs, rivers, ponds, pumping station...and with sand elimination- how upland backstops to flooding, salt water incursion are also eliminated.



With flooding, the highly pervious sand solar base provides little to no buffer to salt water infiltrating the Aquifer.

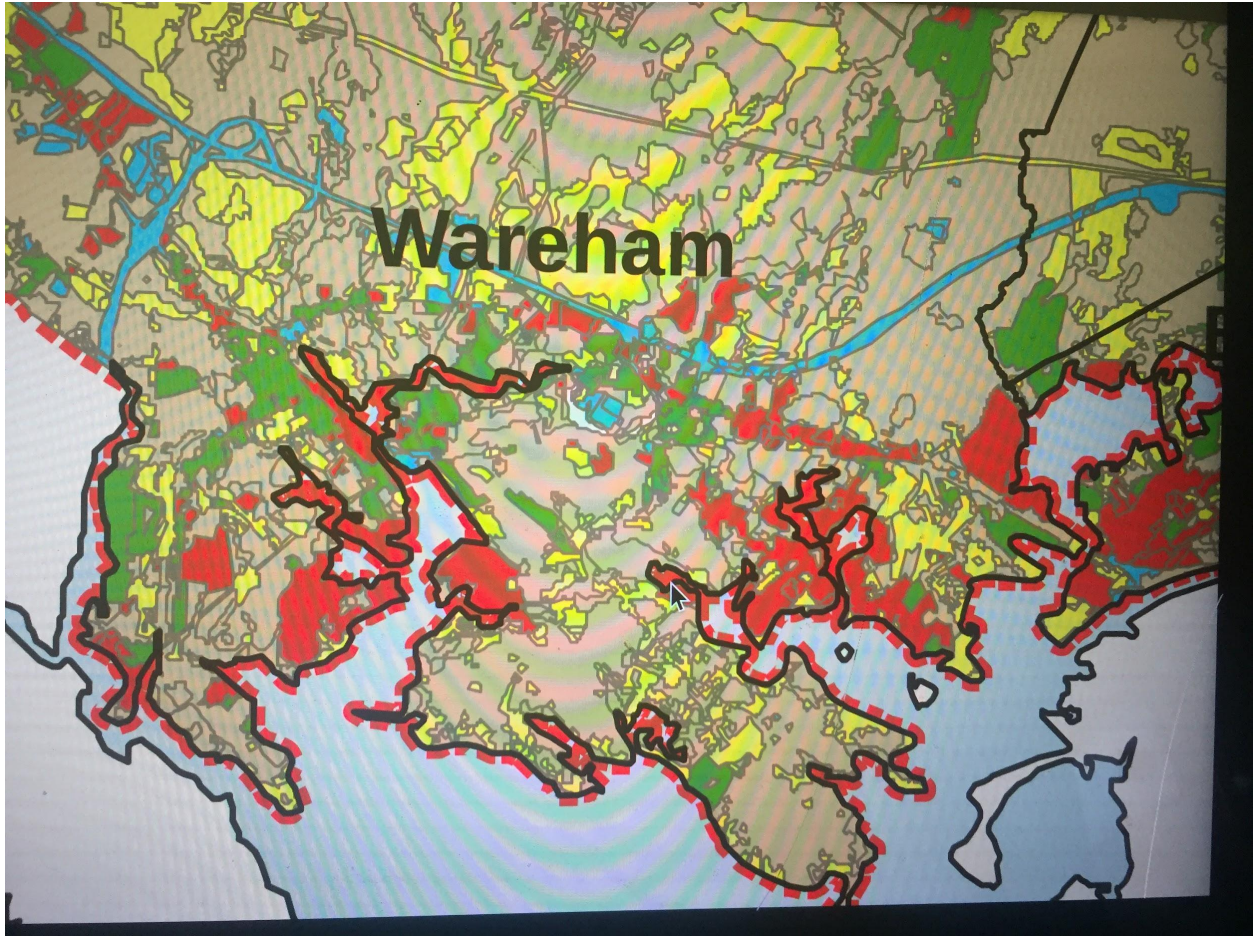


Red areas are ones that pose greatest pollutant risk to the aquifer. The red line is Wareham Downtown. Just below and above the blue line indicating Rt. 25, to the immediate left of the W, are the three ADM/New Leaf projects from which environment a lot of water moves into the Bay which it continues to pollute.

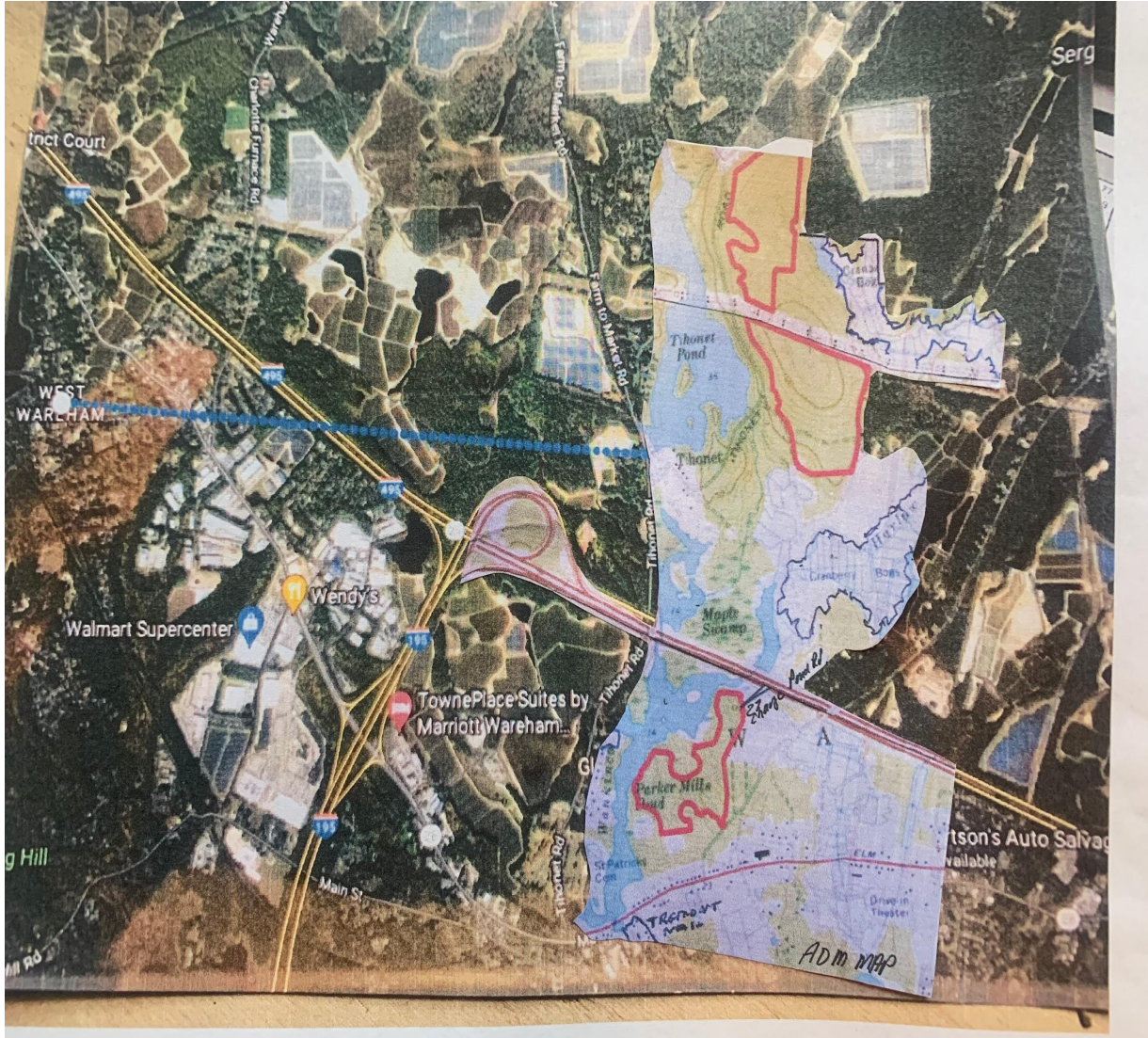
These projects are likewise eliminating the water retention of the forest relative to the Parker Mills Dam failure, downtown flooding, well water and wetland water filtration, heat sink prevention, carbon capture and storage,

Co2 to O2...and when as said by ADM, this solar “fad is over and the junk removed,” we’ll build houses”.. Where will 200 acres of rich vibrant topsoil that has been removed come from? What will grow there? How much sand will have washed away, allowed much of the Sole Source Plymouth Aquifer infiltrated by salt water.... We Have more than a grid connection delay. We have a problem of connecting the broken pieces solar is creating, has and will continue to create.

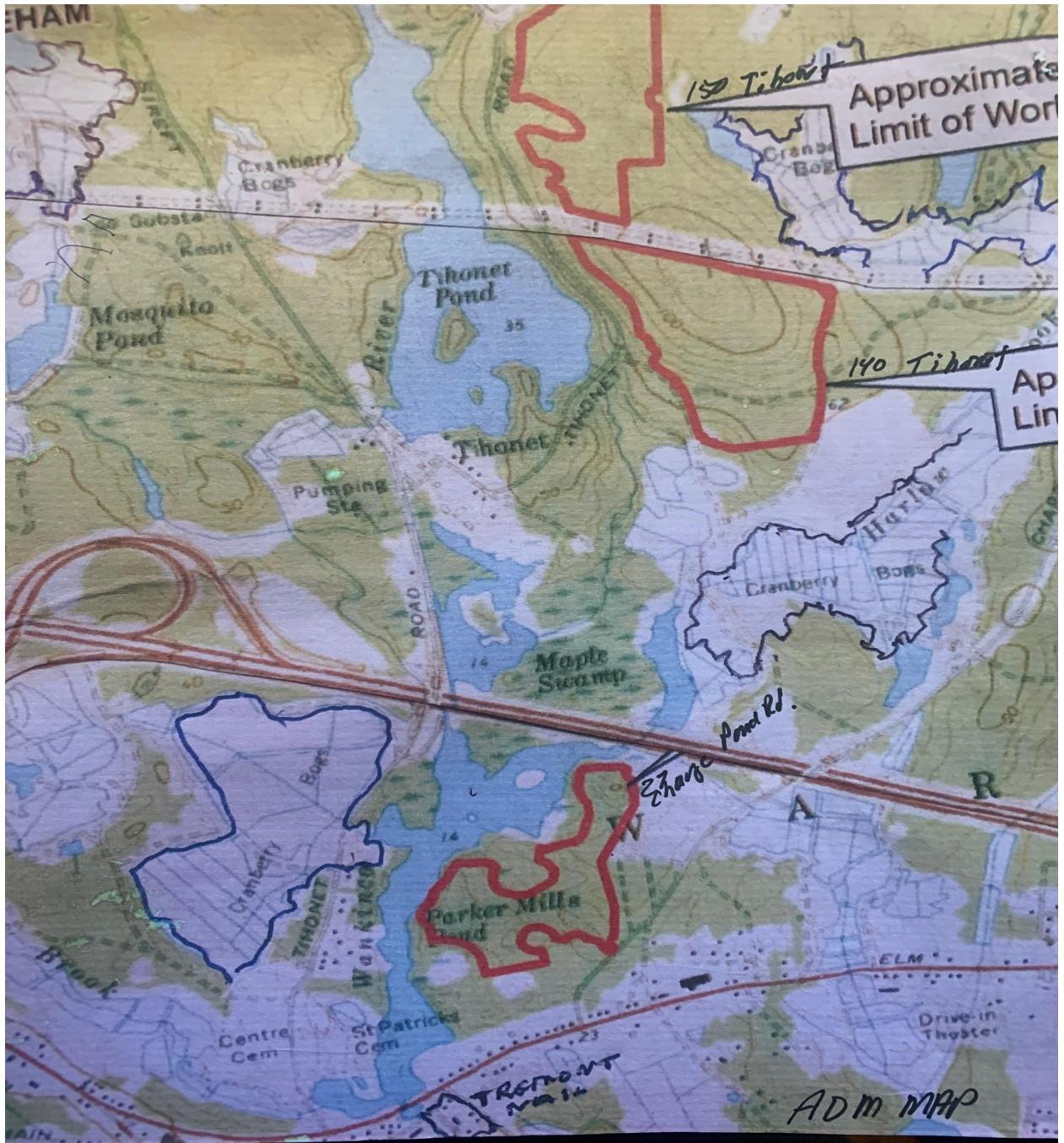
The Planning Board has the right, their “just cause” to review the total picture rapid change in climate has brought for domestic life, town governance, downtown survival, energy reconfiguration and advancement and issues of WATER- the building block of life.



Aquifer Pollution High Risk



More Solar Proposed After This



Water- Wetlands