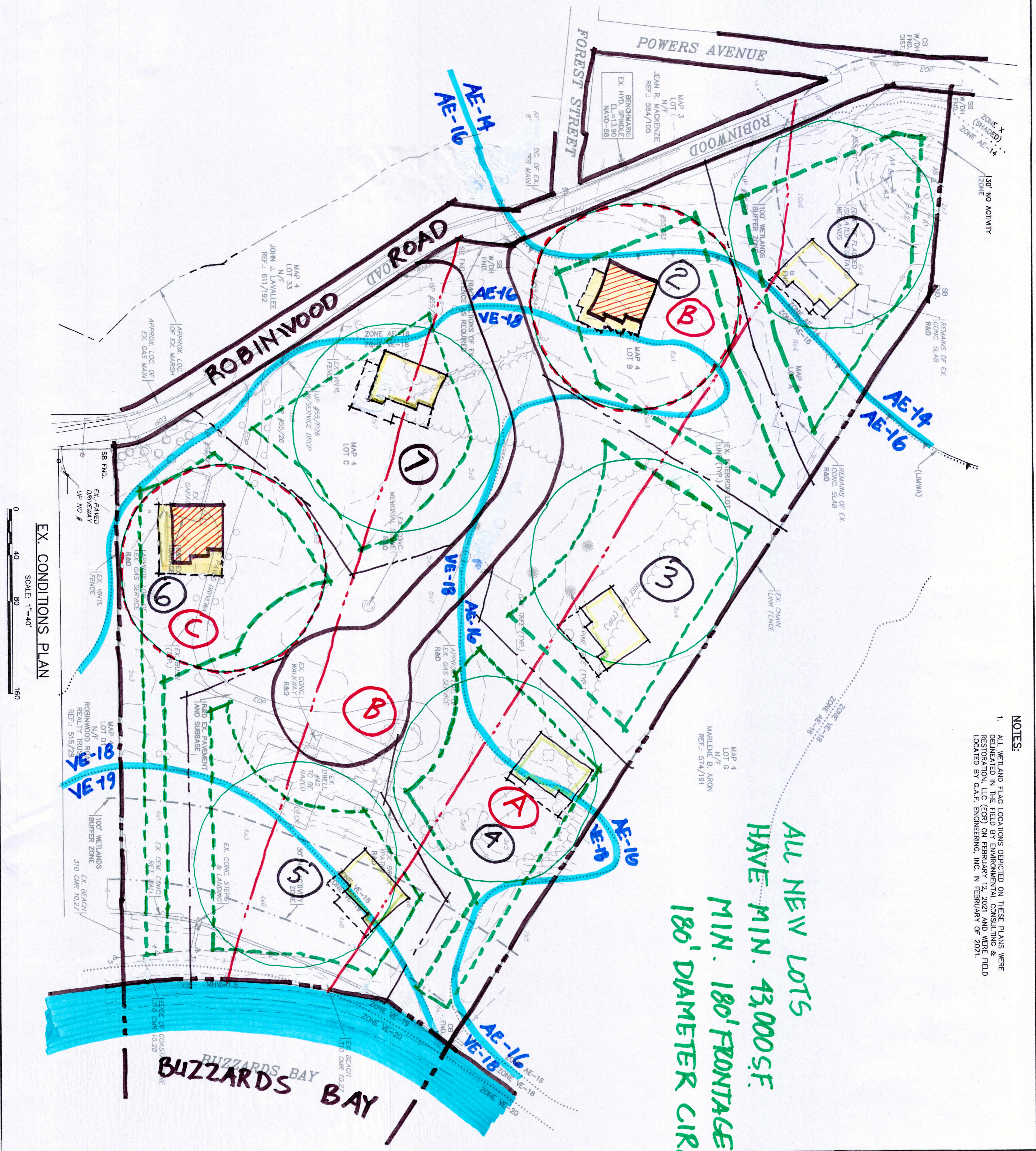
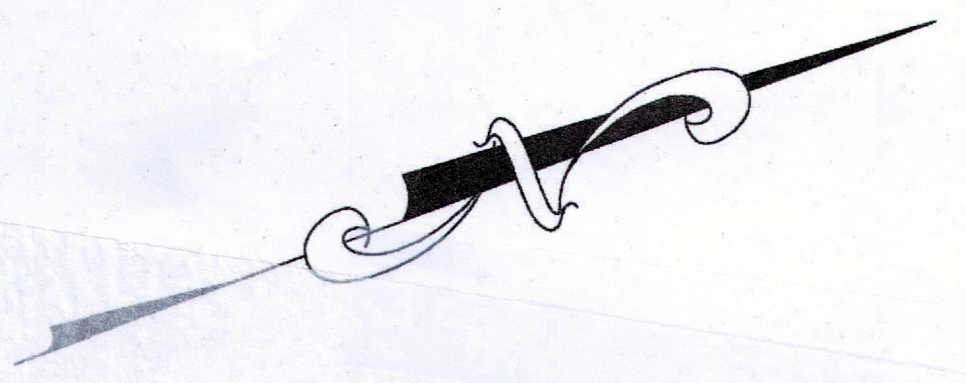


DATE PLOTTED: 03/17/2021 10:00 AM

NO-HOOD



ALL NEW LOTS
HAVE MIN. 43,000 SF.
MIN. 180' FRONTAGE
180' DIAMETER CIRC.

- NOTES:**
- ALL WETLAND FLAG LOCATIONS DERIVED ON THESE PLANS WERE DETERMINED IN THE FIELD BY ENVIRONMENTAL CONSULTING & RESTORATION, LLC (ECR) ON FEBRUARY 12, 2021 AND WERE FIELD LOCATED BY G.A.F. ENGINEERING, INC. IN FEBRUARY OF 2021.

EX. CONDITIONS PLAN
SCALE: 1" = 40'
0 40 80 160



LOCUS MAP : SCALE 1" = 2000'

LEGEND	
EXISTING	DESC.
64	CONTOURS
6.5/3	SPOT GRADES
	WETLANDS
	30' NO ACTIVITY ZONE
	100' BUFFER ZONE
	F.E.M.A. FLOOD ZONE
	LAWA
	CATCH BASIN (CB)
	DRAIN MANHOLE (DMH)
	OVERHEAD WIRES
	UTILITY POLE
	QTY POLE
	WATER GATE VALVE
	WATER SHUTOFF/CURB STOP
	HYDRANT
	WATER LINE
	UNDERGROUND ELECTRIC
	SEWER MANHOLE (SMH)
	SEWER LINE
	TREE/BRUSH LINE
	LIGHT POST
	GAS LINE
	GAS GATE/VALVE
	GAS SHUTOFF
	GAS METER
	FENCE
	BOUND
	SIGN
	STONE WALL
	REBAR

PERMIT SET (NOT FOR CONSTRUCTION) DWG. NO.: 20-9600 2 OF 4	"MARITIME HAVEN" PRELIMINARY SUBDIVISION PLAN EXISTING CONDITIONS PLAN 36, 42, 48 ROBINWOOD ROAD WAREHAM, MA PREPARED FOR: RESI, LLC 2 CHARLES STREET PROVIDENCE, RI	G.A.F. ENGINEERING, INC. PROFESSIONAL ENGINEERS & LAND SURVEYORS 266 MAIN STREET - WAREHAM, MA 02571 TEL: (508) 295-6600 FAX: (508) 295-6634 E-MAIL: gaf@gaf-eng.com	APPROVED BY: <div style="font-size: 48pt; font-weight: bold; color: red; text-align: center;">DRAFT</div>	APPROVED BY: 	DATE: MARCH 17, 2021 DRAWN BY: JUMP CHECKED BY: RAB JOB NO.: 20-9600 SCALE: 1" = 40'	<table border="1"> <thead> <tr> <th>REV.</th> <th>DATE</th> <th>BY</th> <th>APP'D</th> <th>DESCRIPTION</th> </tr> </thead> <tbody> <tr> <td> </td> <td> </td> <td> </td> <td> </td> <td> </td> </tr> </tbody> </table>	REV.	DATE	BY	APP'D	DESCRIPTION					
	REV.	DATE	BY	APP'D	DESCRIPTION											
<small> COPYRIGHT © 2021 G.A.F. ENGINEERING, INC. NO PART OF THIS DOCUMENT MAY BE REPRODUCED, STORED, OR TRANSMITTED IN ANY MANNER, ELECTRONIC AND/OR MECHANICAL, PHOTOCOPIING, WHAT-EVER, WITHOUT THE EXPRESS WRITTEN CONSENT OF G.A.F. ENGINEERING, INC. WITH THE EXCEPTION OF ANY REGULATORY AUTHORITY WHICH MAY REPRODUCE IT IN CONNECTION WITH THE PERFORMANCE OF OFFICIAL BUSINESS UNDER ITS JURISDICTION. ANY MODIFICATIONS MADE TO THIS DOCUMENT WITHOUT THE EXPRESS WRITTEN CONSENT OF G.A.F. ENGINEERING, INC. SHALL RENDER IT UNUSABLE. </small>																