

Clearway Energy Group
100 California St, Suite 400
San Francisco, CA 94111



September 22, 2020

Town of Wareham Planning Board
c/o Mr. Kenneth Buckland, Director of Planning
Memorial Town Hall
54 Marion Road
Wareham, MA 02571

Reference: Project Update and Request for Minor Modification
Large Ground-Mounted Solar Array
77 Farm-to-Market Road

Dear Director Buckland and Town of Wareham Planning Board:

Clearway Energy Group ("Clearway") respectfully submits this project update and a request for Minor Modification to the proposed large ground-mounted solar energy facility ("Project") at 77 Farm-to-Market Road in Wareham, Massachusetts on property owned by A.D. Makepeace Company (ADM). This Project received a Site Plan Review Approval from the Town Planning Board ("Board") on January 16, 2019, and is currently in late-stage development.

Update: Change in Ownership

In November 2019, the Project owner (77F2M WHAM8 SOLAR, LLC) underwent a change of control from being an indirect wholly-owned subsidiary of Borrego Solar Systems, Inc. ("Borrego") to an indirect wholly-owned subsidiary of Clearway Energy Group ("Clearway"), as a result of Clearway's acquisition of the Project from Borrego.

Clearway and Borrego have created a long-standing partnership in Massachusetts whereby Borrego develops and Clearway acquires, finances, constructs, owns and operates community solar projects across the state. To date, Clearway owns and operates 39 projects in construction and operation comprising over 100 MW in Massachusetts that were built under the Clearway/Borrego partnership.

Clearway Energy Group is a full-scope development and operations platform for renewable energy. We participate in every stage of the lifecycle of our projects – from origination and development – through construction and financing – to long term

ownership, management, and operations. Clearway Energy Group is accelerating the world's transformation to a clean energy future. With more than 4.7 gigawatts of wind, solar, and energy storage assets in 25 states and a development pipeline across the country, we are offsetting the equivalent of nearly 8 million metric tons of carbon emissions for our customers.

Clearway is the largest owner of community solar projects in Massachusetts, with over 155 MW in operation and under construction to date. The Project is part of an eight-project portfolio (the "Portfolio") within Wareham and Carver that is a flagship of the SMART program for Massachusetts. The Portfolio will bring over \$118,000,000 in total investment, including over \$9,500,000 in investment to upgrade public infrastructure. As the long-term owner/operator of the Project and Portfolio, Clearway is eager to leverage our extensive experience in this state and work collaboratively with the Town to bring the Project safely and responsibly into operation.

As a result of the new ownership, Clearway requests the Board direct future correspondence regarding the Project to the point of contact set forth below:

Anna Chavis
Project Development Manager
Anna.chavis@clearwayenergy.com
609-819-1367

Project Design Update: Minor Modification

An extensive, one year-long transmission study on the Project conducted by Eversource and the Affected System Operators recently concluded in June 2020. With the study having now ended, Clearway has initiated the detailed design and engineering stage of Project development, which is necessary for the building permit application submittal. As part of our detailed design coordination with Eversource, Eversource is requiring the Project to implement minor technical changes to the electrical configuration at and leading to the Point of Interconnection. The rationale for these minor changes is compliance with Eversource's SMART program metering standards and its safety/reliability requirements. These metering requirements—which pertain to the pole count and configuration—were not developed and released by Eversource until late 2019, well after the permit for the Project was approved by the Planning Board.

Fortunately, all requisite changes to the pole design can and will occur within the existing permitted footprint of the Project. While the original approved Site Plans called for a pole-mounted interconnection that consisted of five poles, the enclosed updated Exhibit reflects Eversource's requirements for additional pole-mounted interconnection equipment which results in a new total of twelve poles. These additional poles function to i) hold Eversource solar and storage metering equipment for the SMART program; ii) hold equipment for safe disconnects and protection of the solar and storage equipment from the grid; iii) allow Eversource to safely access its equipment.

We note that this proposed modification is consistent with the written comment on the approved January 9, 2019 Site Plans that "Final Pole Design is pending Completed Utility Study Further". Further, the increase in required electrical scope does not create any change from the original Impact Statement submitted as part of the original Site Plan Review Application.

Request for Approval: Minor Modification

Enclosed please find an Exhibit depicting the revised interconnection area equipment.

Given the minor and unsubstantial nature of the proposed change, pursuant to Section 1566.9 Item 1 of Article 15 Site Plan Review of the Wareham Zoning Bylaws, we respectfully request that the Planning Board issue a Minor Modification to the Site Plan Approval for the Project. Given ongoing work with Eversource, we further request that the Planning Board acknowledge that should the Project need to implement subsequent minor adjustments to detailed design that occur within the existing permitted footprint, further review would be limited to submittal of a final Site Plan as the plan of record for the Building Permit.

Please do not hesitate to contact us with any questions or comments at 609-819-1367 or anna.chavis@clearwayenergy.com.

Thank you for your time,

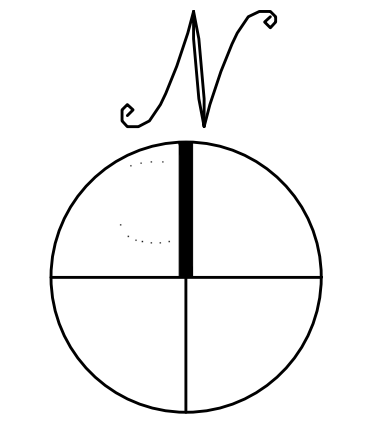
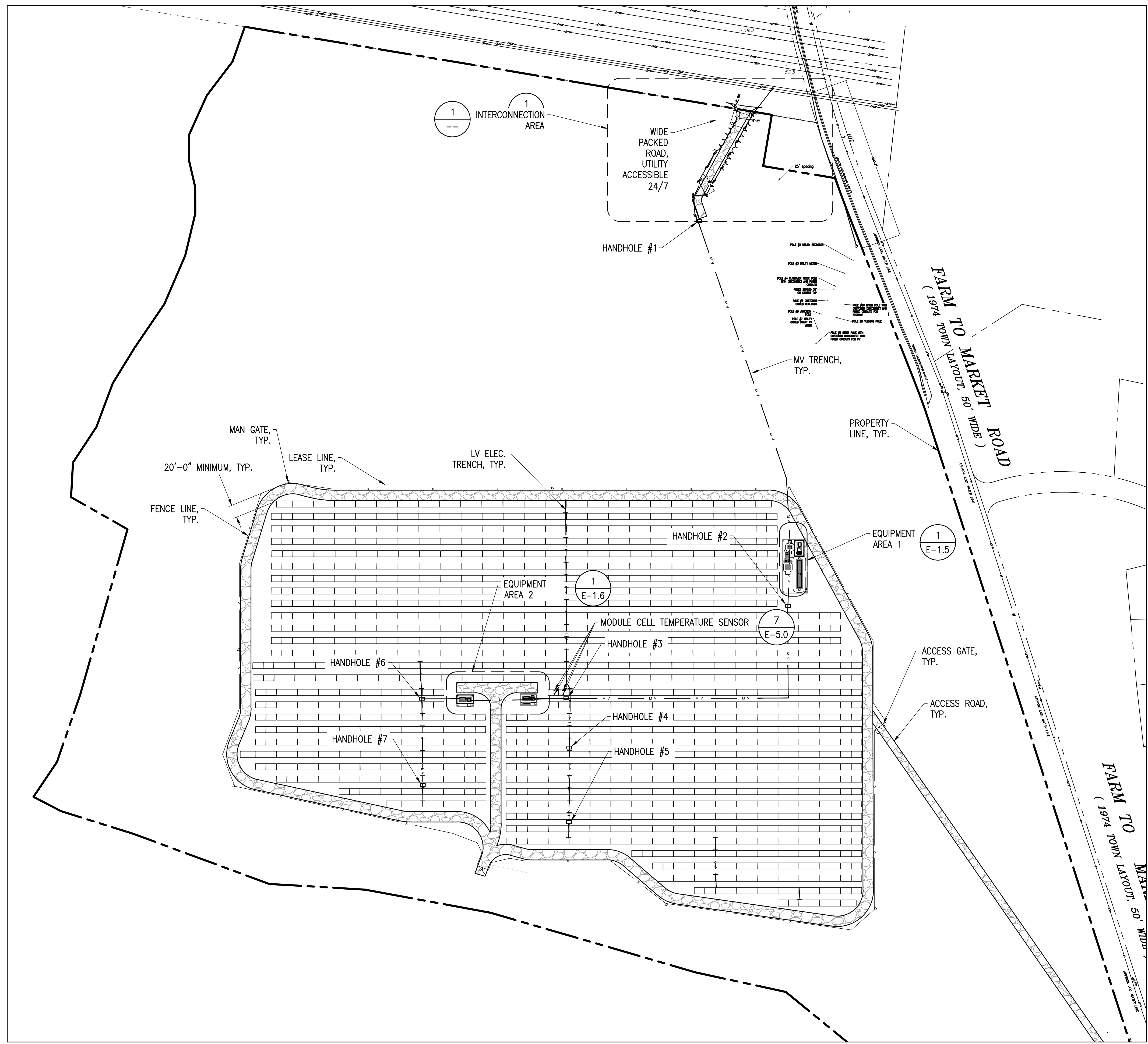


Anna Chavis
Clearway Energy Group

Enclosure: Exhibit A: Electrical Site Plan dated August 18, 2020

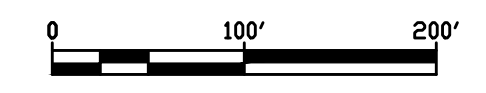
Exhibit A – Electrical Site Plan

C:\Users\sdsmith\Box\volteforce\Projects\17172n\whom 8 - waretom - epc\Design\02 - working set\17 farm to market rd - waretom_coffr_0611220_1g



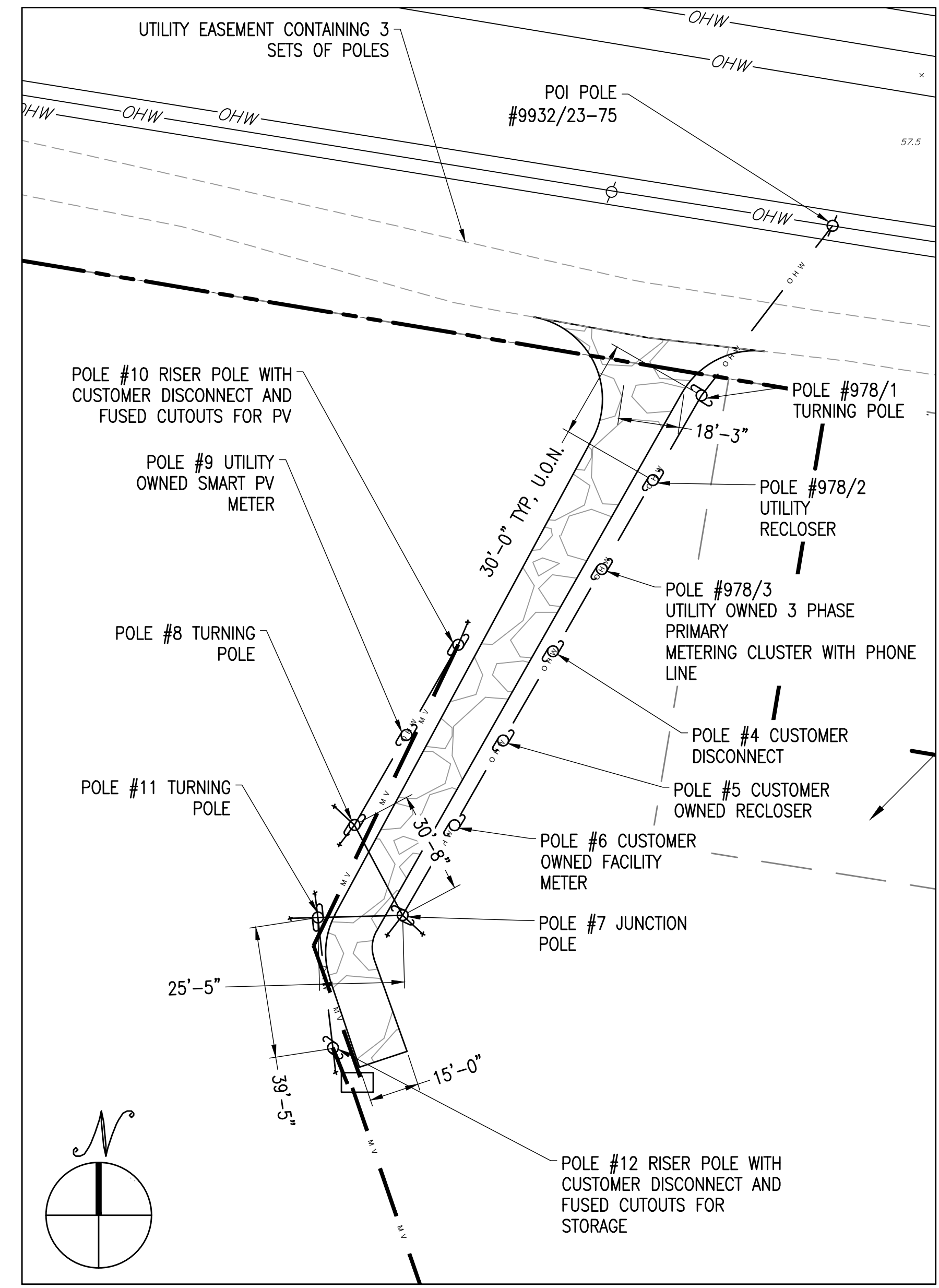
ELECTRICAL SITE PLAN

SCALE: 1" = 100'



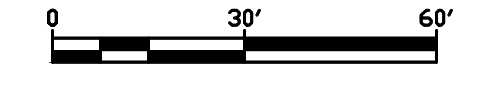
SHEET NOTES

- SEE ELECTRICAL DETAILS FOR TRENCH DEPTH, CONDUITS CHAIRS & PROPER CONDUIT-TO-CONDUIT SPACING REQUIREMENTS.
- IT IS THE RESPONSIBILITY OF THE SUBCONTRACTOR TO HAVE ALL UNDERGROUND UTILITIES MARKED PRIOR TO CONSTRUCTION
- CONNECTORS SHALL BE BY THE SAME MANUFACTURER AS THOSE ON THE MODULES.
- REFER TO STRUCTURAL PLANS FOR REQUIRED SEPARATION DISTANCE BETWEEN EXCAVATIONS AND RACKING FOUNDATIONS.
- LOCATION OF UTILITY POLES SHALL BE COORDINATED WITH UTILITY, VERIFIED IN FIELD AND APPROVED BY BORREGO ELECTRICAL ENGINEER. GUY WIRES FOR POLES SHALL NOT BE PLACED IN WETLAND AREAS. UTILITY OWNED POLES SHALL BE A MINIMUM OF 30' APART UNLESS PRIOR UTILITY APPROVAL HAS BEEN GRANTED.
- SUBCONTRACTOR TO PROVIDE SUBMITTAL OF PULL CALCULATIONS FOR EACH MV CABLE RUN, VERIFYING CABLE INSTALLED TO MANUFACTURER'S SPECIFICATION FOR CABLE TENSION AND SIDE WALL PRESSURE.
- PROVIDE SEPARATE HANDHOLES FOR MV, COMMUNICATIONS, AND LV (DC AND AC) CONDUITS AS REQUIRED FOR WIRE PULLING AND CODE COMPLIANCE. SUBCONTRACTOR TO PROVIDE SUBMITTAL FOR HANDHOLE. SEE ELECTRICAL SPEC SHEET SECT. 260533 Y.
- CONDUIT RUNS SHOWN ARE INDICATIVE OF PATH AND CONVEY ORIGIN AND TERMINATION. SUBCONTRACTOR TO DETERMINE BEST ROUTE PER FIELD CONDITIONS. FINAL CONDUIT PATH SHALL BE APPROVED WITH BORREGO SITE SUPERVISOR PRIOR TO INSTALLATION.
- INSTALLATION ON THE UTILITY SIDE OF THE POCC SHALL COMPLY WITH UTILITY REQUIREMENTS - UTILITY STANDARDS TO BE PROVIDED BY BORREGO.
- UTILITY OWNED EQUIPMENT IS SHOWN FOR REFERENCE PURPOSES ONLY. IT IS NOT FOR CONSTRUCTION AND MAY BE CHANGED BY THE UTILITY AT ANY TIME.



1 INTERCONNECTION DETAIL

SCALE: 1" = 30'



THIS DOCUMENT IS PROVIDED BY BORREGO SOLAR SYSTEMS, INC. TO FACILITATE THE SALE AND INSTALLATION OF A SOLAR POWER SYSTEM FROM BORREGO SOLAR SYSTEMS, INC. REPRODUCTION, RELEASE OR UTILIZATION FOR ANY OTHER PURPOSE, WITHOUT PRIOR WRITTEN CONSENT IS STRICTLY PROHIBITED.



Charles D. Smith
9/17/20

IT IS A VIOLATION OF LAW FOR ANY PERSON TO ALTER ANY DOCUMENT WHICH BEARS THE SEAL OF A PROFESSIONAL ENGINEER, UNLESS THEY ARE ACTING UNDER THE DIRECTION OF A LICENSED PROFESSIONAL ENGINEER.

77 FARM TO MARKET
77 FARM TO MARKET RD., WARHEAM, MA 02571

PROJECT NUMBER:
905-1865

REV	DATE	DRAWN	CHECKED	RELEASE LEVEL
1	11/8/19	NH	DS	DEVELOPMENT PLAN SET
	08/18/20	SS	TB	UTILITY SUBMISSION REVIEW

SCALES STATED ON DRAWINGS ARE VALID ONLY WHEN PLOTTED ARCH D 24" X 36"

E-1.0
ELECTRICAL SITE PLAN