

**ADDENDUM NO. 2**



TO

**CONTRACT DOCUMENTS**

**IMPROVEMENTS TO BAYVIEW PARK, HIGHLAND AVENUE SIDEWALK  
IMPROVEMENTS, AND IMPROVEMENTS TO THE LILLIAN GREGERMAN BANDSHELL  
WAREHAM, MA**

**Bid #1048**

January 30, 2024

**NOTICE TO BIDDERS**

The attention of all bidders submitting proposals for “Improvements to Bayview Park, Highland Avenue Sidewalk Improvements, and Improvements to the Lillian Gregerman Bandshell” is called to the following Addenda to the specifications and plans. The items set forth herein, whether of omission, addition or substitution are to be included in, and form part of the specifications and plans of the above-named project for bids to be received as advertised.

**PLEASE BE SURE TO ACKNOWLEDGE  
THIS ADDENDUM ON BID PRICING PAGE**

The following clarifications, modifications, deletions, and additions are hereby incorporated into and become part of the Contract Documents.

**FOR CLARIFICATION**

1. The bid deadline shall be extended to February 15, 2024. The updated bid schedule dates are listed below.
  - Addendum 3 to be Issued: Approx. 02/06/2024
  - Extended Deadline for Questions: 02/08/2024, 4:00 PM
  - Questions Answered and Issue Addenda: 02/12/2024
  - General Bids Due: 02/15/2024 at 10:00 AM
  - Issue Notice to Proceed (NTP): Approx. 04/1/2024
2. Additional responses to submitted questions will be included in Addendum No. 3, which is forthcoming.

## WRITTEN CHANGES AND CLARIFICATIONS TO DRAWINGS

1. **DELETE:** Detail 4, Sheet L503  
**REPLACE:** Detail 4, Sheet L503 in SK-1 per attachment
2. **DELETE:** Detail 1, Sheet L504  
**REPLACE:** Detail 1, Sheet L504 in SK-2 per attachment
3. **DELETE:** Detail 3, Sheet L131  
**REPLACE:** Detail 3, Sheet L131 in SK-3 per attachment

## QUESTIONS AND CLARIFICATIONS

- Question 1:** Detail 3, on sheet E501 calls for an EYS fitting on all lamp posts. This is not common to most projects and will cost a substantial amount of money for that component. Please consider eliminating the EYS fittings.
- Answer:** **The EYS fitting can be deleted, and conduit ends should be weatherproofed.**
- Question 2:** Detail 3, on sheet E501 calls for two conduits in each light pole foundation. Please consider eliminating the handholes at each light pole and having the two conduits daisy chain from light pole to light pole. This will be a substantial cost savings, and also be a much better application aesthetically for the property.
- Answer:** **For ease of future maintenance and repair, the handholes remain in the bid documents.**
- Question 3:** Detail 3, on sheet E501 calls for two conduits in each light pole foundation. Will these sweeps be permitted to be PVC?
- Answer:** **PVC sweeps are acceptable.**
- Question 4:** Detail 3, on sheet E501 for the site pole light bases on E501 refer to civil drawings for dimensions, - There are no site pole base details on the civil Drawings:
- Answer:** **Replace references in Detail 3, Sheet E501 to civil drawings with Detail 8, L505.**
- Question 5:** Please confirm if any type of reinforcement is required in concrete cast-in-place sidewalks.
- Answer:** **Yes, 4x4 welded wire mesh on chairs is required. See SK-1 included within this addendum.**
- Question 6:** Please confirm if a curing agent is required on broom finished concrete cast-in-place sidewalks.

**Answer:** Yes, curing materials are specified in Specification Section 03 30 00.

**Question 7:** Please confirm if a footing / frost wall is required for cast in place stairs?

**Answer:** A footing is required as detailed in Detail 1, Sheet L504. Depth of the footing as shown is 3'-6" from top of tread, for both the top and bottom of tread. See SK-2 included within this addendum for further clarification.

**Question 8:** Are the CIP stairs stamped with integral colors? are the landings stamped?

**Answer:** The stairs shall be poured with cast-in-place concrete with an integral color. No stamping on the stair treads and landings integral to the stair are required. See SK-2 included within this addendum.

**Question 9:** Detail 1 L504 denotes stabilized stone dust @ landings, please confirm landings are stamped concrete not stabilized stone dust?

**Answer:** The stairs meet integral colored stamped cast-in-place concrete pavement. See SK-2 included within this addendum.

**Question 10:** Please confirm the extent of the handrail along the ramp side of the gazebo.

**Answer:** See SK-3 for layout clarification.

**Question 11:** Will CIP stairs require a structural engineer design from the contractor?

**Answer:** No, however, stair layout must be coordinated with the handrail shop drawing review and approval process.

**Question 12:** Addendum 1 was issued on 01/24/24 - with questions closing today 01/25/24. Would the town/ Engineers consider extending the Bid date to allow contractors to properly evaluate the items addressed in the addendum (particular of note spec section 32)

**Answer:** The bid due deadline was extended to February 15, 2024 in Addendum 2.

**Question 13:** Is an on site trailer required for an on site representative of the Town/ Owners rep?

**Answer:** No on site trailer is required for the Owner or Owner's Representative.

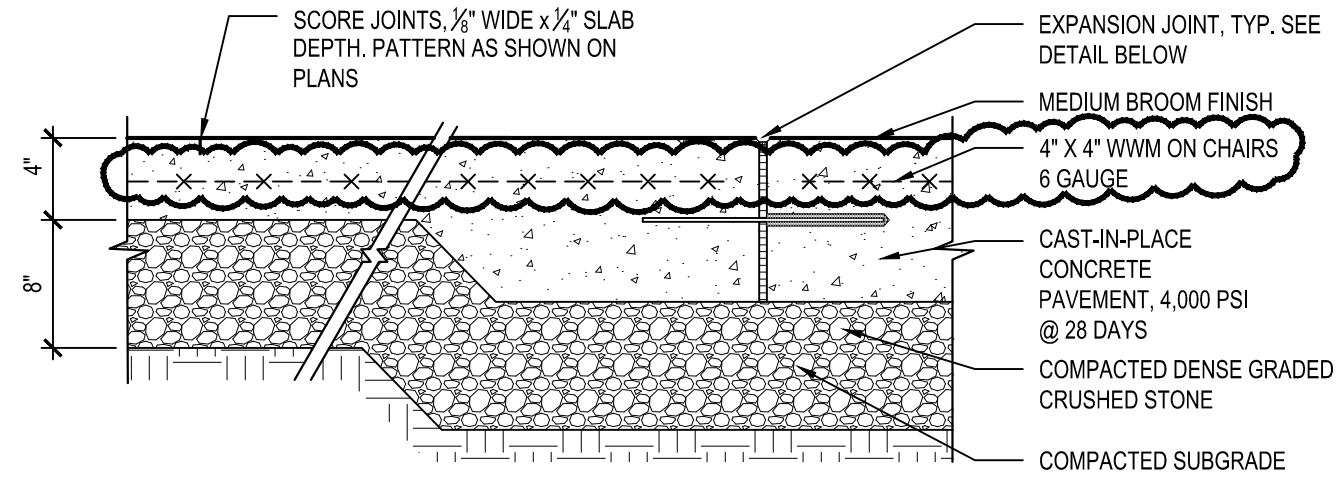
#### **ATTACHMENTS:**

SK-1: REVISIONS TO CAST-IN-PLACE CONCRETE PAVEMENT AND EXPANSION JOINT

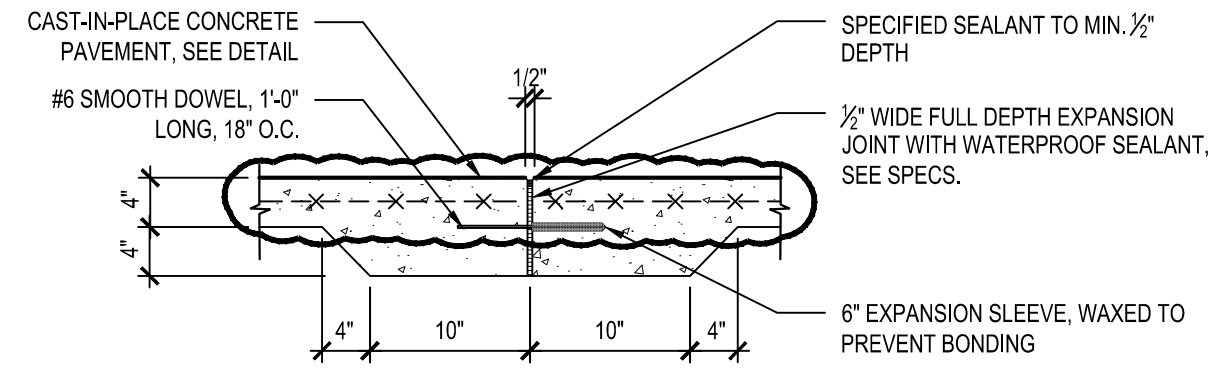
SK-2: REVISIONS TO CAST-IN-PLACE CONCRETE STAIRS WITH STAINLESS STEEL HANDRAIL

SK-3: REVISIONS TO ENLARGEMENT PLAN – ADA RAMP AT GAZEBO

**END OF ADDENDUM NO. 2**



CAST-IN-PLACE CONCRETE PAVEMENT, TYPICAL



EXPANSION JOINT, TYPICAL

**EXPANSION JOINT INSTALLATION NOTES:**

1. DOWEL IS TYPICAL AT ALL EXPANSION JOINTS (18" O.C.) WITHIN CONCRETE PAVING AND BETWEEN NEW CONCRETE PAVING AND EXISTING CONCRETE PAVING TO REMAIN.
2. DELETE EXPANSION SLEEVE AND DOWEL WHERE JOINT ABUTS WALL, CURBS, OR OTHER VERTICAL SURFACES, UNLESS OTHERWISE NOTED.
3. EXPANSION JOINTS MAX. 25'-0" O.C. UNLESS SHOWN OTHERWISE.
4. EXPANSIONS JOINTS SHALL BE PLACED WHERE NEW CEMENT CONCRETE PAVEMENT MEETS EXISTING PAVEMENT OR WALLS TO REMAIN.
5. ALL SCORE JOINTS SHALL BE SAW CUT.
6. PATHWAYS THAT CALL TO BE STAMPED SHALL BE INSTALLED WITH INTEGRALLY-COLORED A SEASHELL CONCRETE AND STAMPED WITH PATTERN, SEE SPECIFICATIONS FOR DETAILS ON THE PATTERN AND INTEGRAL COLOR ADDITIVE.
7. FOR DETAILS CALLED OUT AS "INTEGRAL" REFER TO SPECS.

**1 CAST-IN-PLACE CONCRETE PAVEMENT AND EXPANSION JOINT**  
NOT TO SCALE



85 Devonshire Street,  
3rd Floor, Boston, MA 02109  
617.412.4480 800.SAMPSON  
www.westonandsampson.com

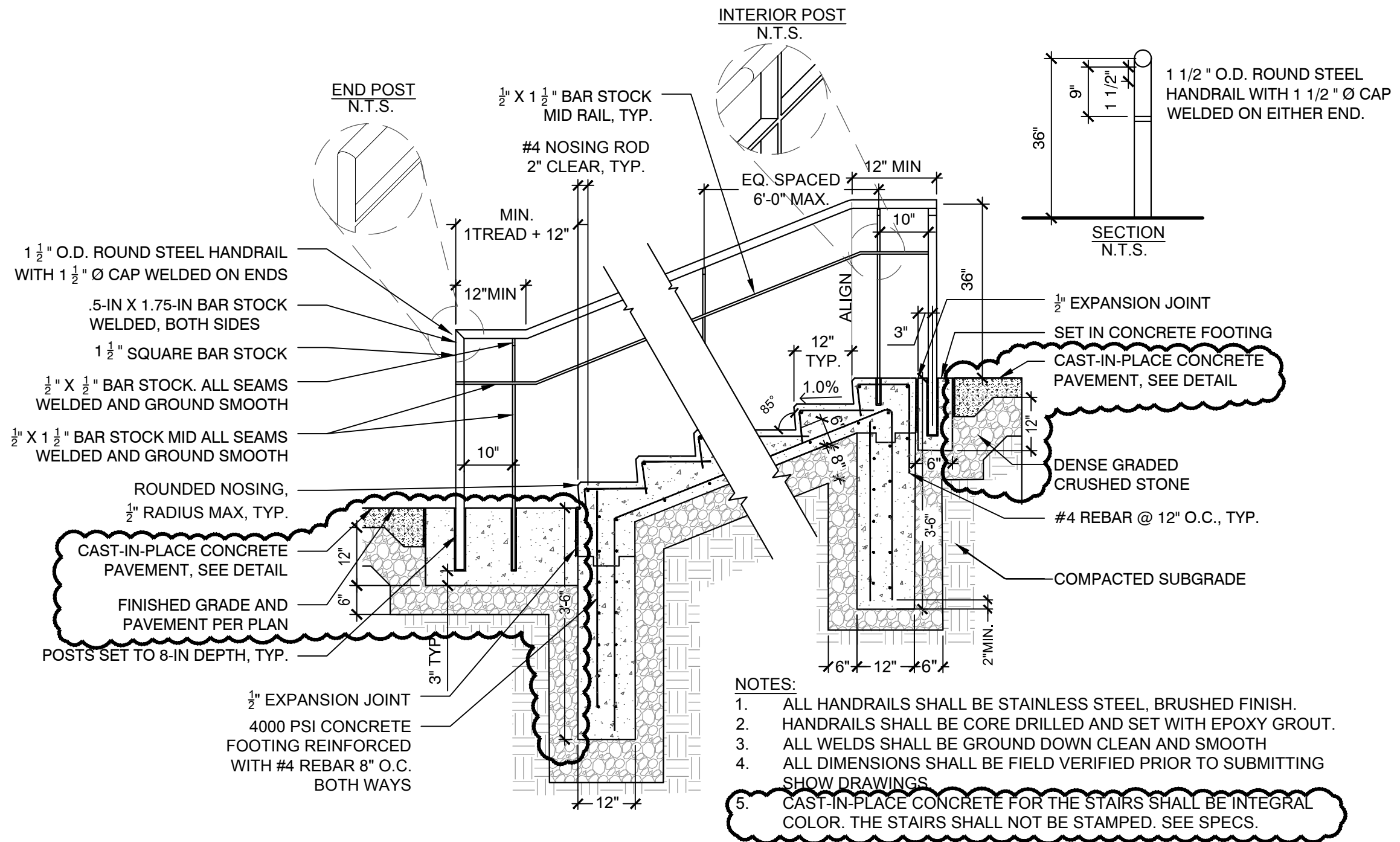
**IMPROVEMENTS TO BAYVIEW PARK**

REVISIONS TO CAST-IN-PLACE CONCRETE  
PAVEMENT AND EXPANSION JOINT

Drawn by:  
TZ  
Reviewed by:  
CB

Scale: 1" = 1'-0"  
01/26/2024  
UPDATED 01/26/2024

**SK-1**



**1** CAST-IN-PLACE CONCRETE STAIRS WITH STAINLESS STEEL HANDRAIL  
NOT TO SCALE

**Weston & Sampson**

85 Devonshire Street,  
3rd Floor, Boston, MA 02109  
617.412.4480 800.SAMPSON  
www.westonandsampson.com

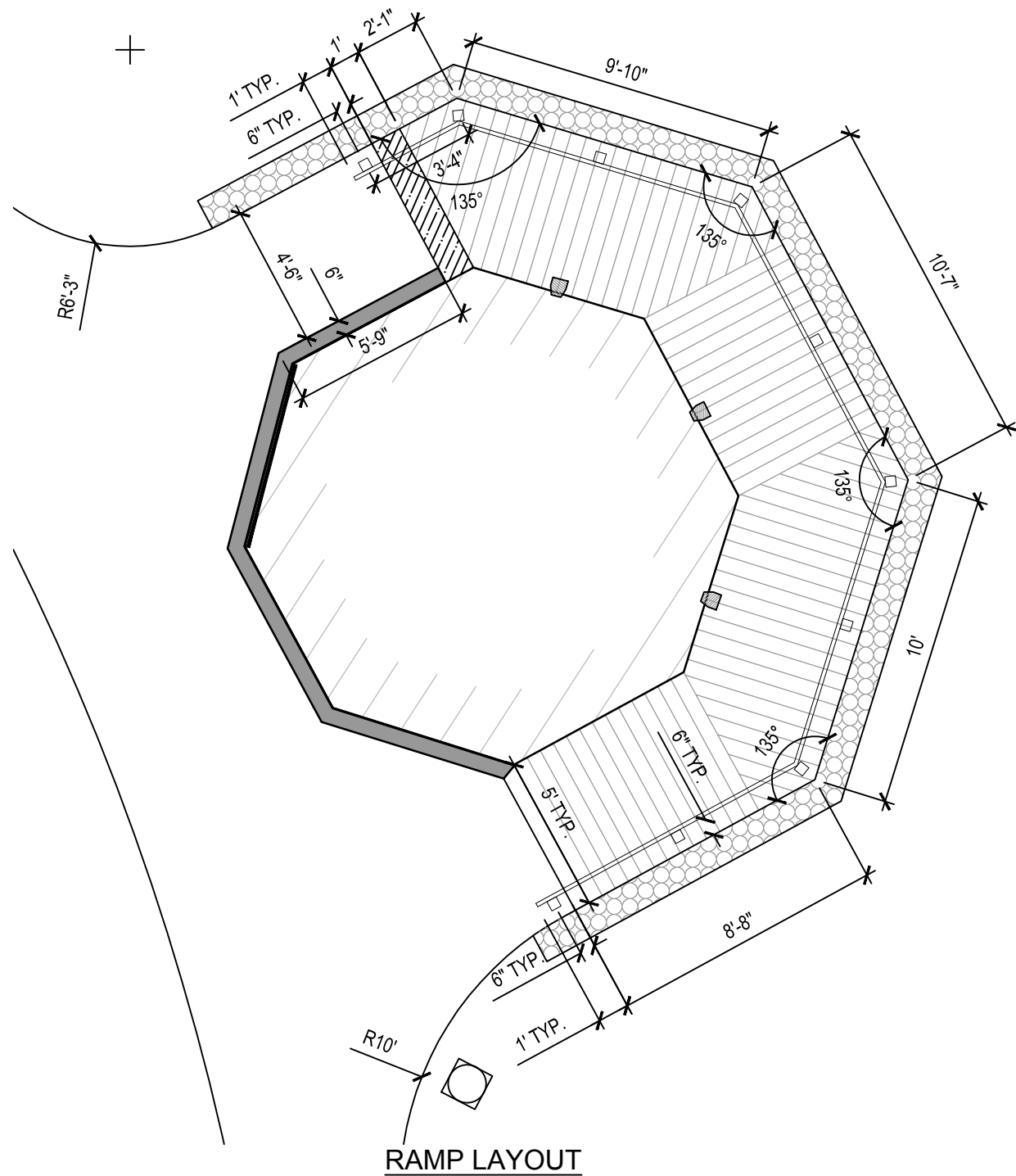
**IMPROVEMENTS TO BAYVIEW PARK**

**REVISIONS TO CAST-IN-PLACE CONCRETE STAIRS  
WITH STAINLESS STEEL HANDRAIL**

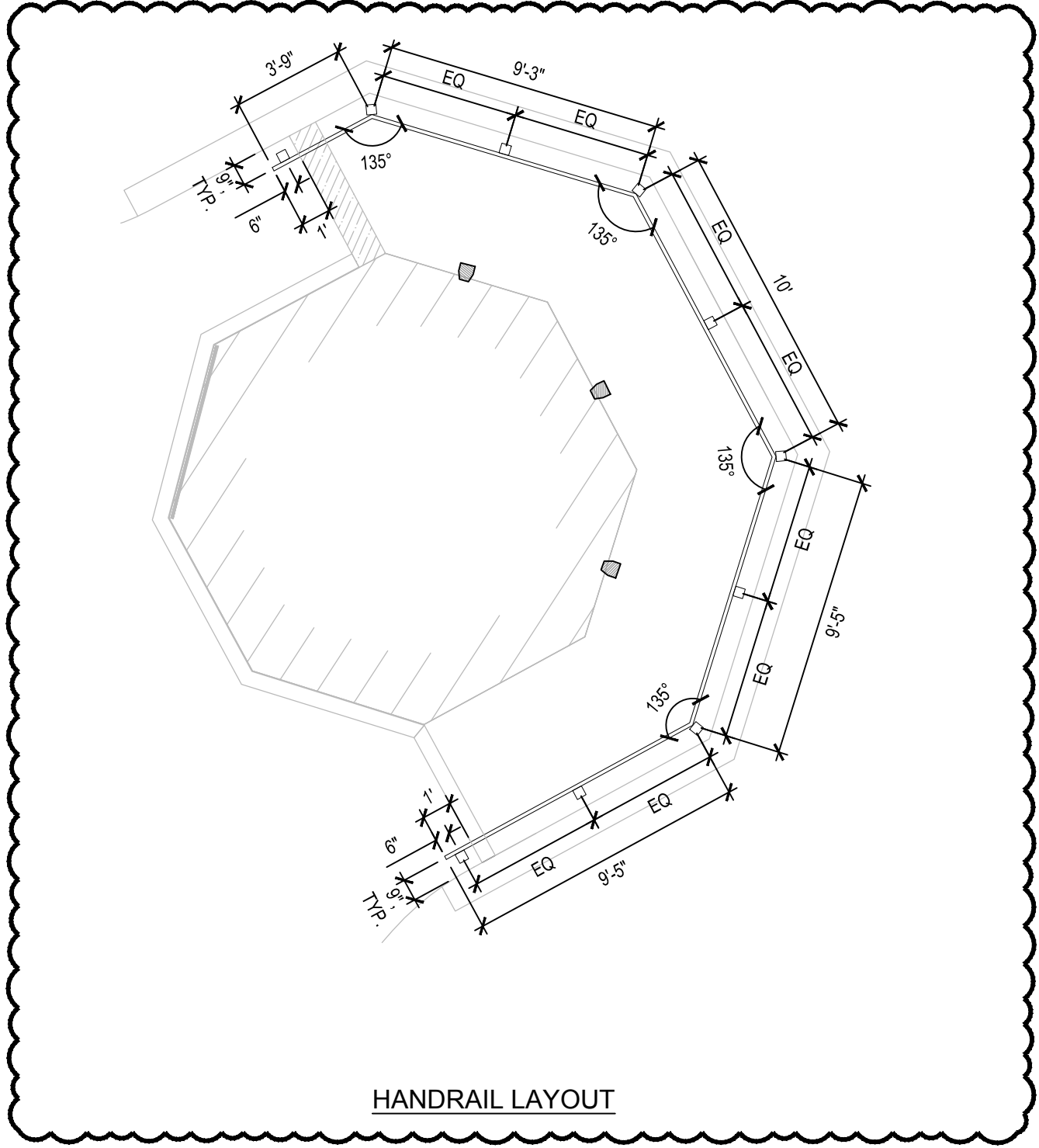
Drawn by:  
**TZ**  
Reviewed by:  
**CB**

Scale: 1" = 2'-0"  
01/26/2024  
UPDATED 01/26/2024

**SK-2**



RAMP LAYOUT



HANDRAIL LAYOUT

1

ENLARGEMENT PLAN - ADA RAMP AT GAZEBO

SCALE: 1" = 5'-0"

**Weston & Sampson**

85 Devonshire Street,  
3rd Floor, Boston, MA 02109  
617.412.4480 800.SAMPSON  
www.westonandsampson.com

IMPROVEMENTS TO BAYVIEW PARK

REVISIONS TO ENLARGEMENT PLAN  
- ADA RAMP AT GAZEBO

Drawn by:

TZ

Reviewed by:

CB

Scale: 1" = 5'-0"

01/30/2024

UPDATED 01/26/2024

**SK-3**