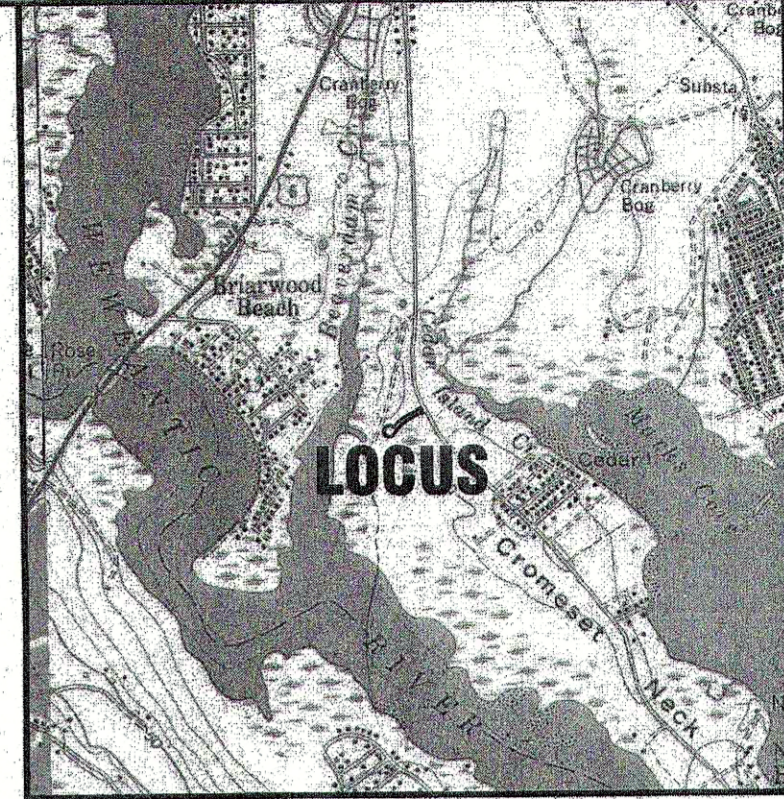


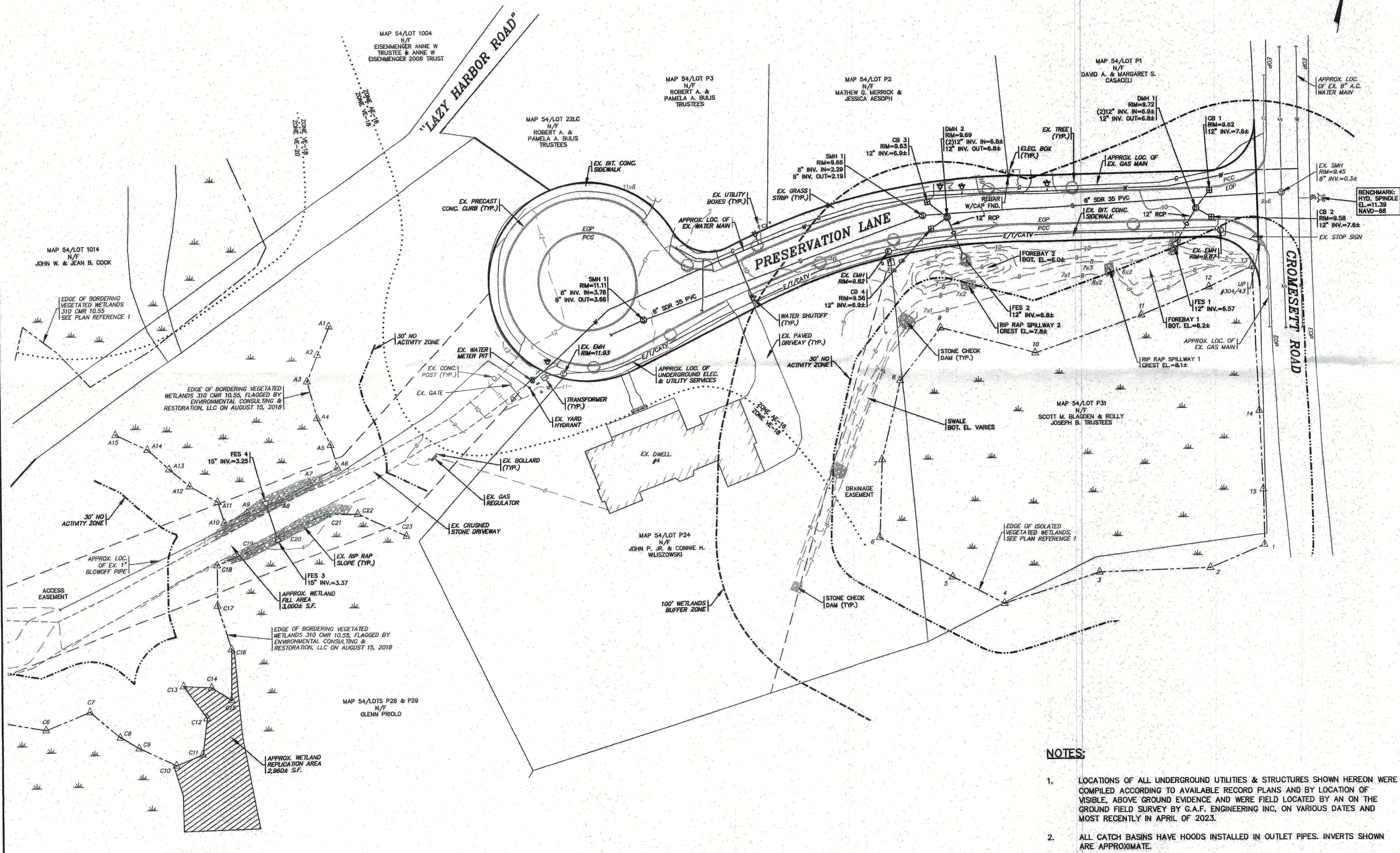
PLAN REFERENCES:

- REFER TO A PLAN PREPARED BY G.A.F. ENGINEERING, INC. ENTITLED "THE PRESERVE ON THE WEWANTIC, A DEFINITIVE RESIDENTIAL SUBDIVISION PLAN, OFF CROMESSETT ROAD, WAREHAM, MASSACHUSETTS" PREPARED FOR SCOTT BLAGDEN REAL ESTATE LTD, DATED MARCH 3, 2003 AND LAST REVISED JUNE 3, 2003.
- REFER TO A PLAN PREPARED BY G.A.F. ENGINEERING, INC. ENTITLED "SANITARY SEWER CONNECTION PLAN, 6 PRESERVATION LANE, WAREHAM, MA" PREPARED FOR GLENN PRIOLO, DATED OCTOBER 3, 2018.



LOCUS MAP : SCALE 1" = 2000'

FLOOD ZONE DATA:
 THE PROJECT IS WITHIN FLOOD ZONE AE-16, VE-18 & VE-20. REFER TO THE F.E.M.A. FLOOD INSURANCE RATE MAP PANEL NUMBER 25023C0576K, DATED: FEBRUARY 5, 2014. THE PROJECT IS ALSO WITHIN LIMIT OF MODERATE WAVE ACTION (LIMWA).



DATE: SEPT. 8, 2023
 DRAWN BY: JMP
 CHECKED BY: RAB
 JOB NO.: 21-9697
 SCALE: 1" = 30'

APPROVED BY: [Signature]



LEGEND

EXISTING	DESC.
10	CONTOURS
14x5	SPOT GRADES
	WETLANDS
	30' NO ACTIVITY ZONE
	100' BUFFER ZONE
	F.E.M.A. FLOOD ZONE
	LIMWA
	CATCH BASIN (CB)
	DRAIN MANHOLE (DMH)
	DRAIN LINE
	OVERHEAD WIRES
	UTILITY POLE (UP)
	GUY POLE
E/T/CATV	UNDERGROUND UTILITIES
	TRANSFORMER
	WATER GATE VALVE
	WATER SHUTOFF/CURB STOP
	HYDRANT
	WATER LINE
	SEWER MANHOLE (SMH)
	SEWER LINE
	TREE/BRUSH LINE
	LIGHT POST
	GAS LINE
	GAS GATE/VALVE
	GAS SHUTOFF
	GAS METER
	FENCE
	SIGN
	BOUND
	STONE WALL
	REBAR
EOP	EDGE OF PAVEMENT
PCC	PRECAST CONCRETE CURB
FES	FLARED END SECTION
RCP	REINFORCED CONCRETE PIPE
UP	UTILITY POLE

NOTES:

- LOCATIONS OF ALL UNDERGROUND UTILITIES & STRUCTURES SHOWN HEREON WERE COMPILED ACCORDING TO AVAILABLE RECORD PLANS AND BY LOCATION OF VISIBLE, ABOVE GROUND EVIDENCE AND WERE FIELD LOCATED BY AN ON THE GROUND FIELD SURVEY BY G.A.F. ENGINEERING INC, ON VARIOUS DATES AND MOST RECENTLY IN APRIL OF 2023.
- ALL CATCH BASINS HAVE HOODS INSTALLED IN OUTLET PIPES. INVERTS SHOWN ARE APPROXIMATE.
- REFER TO AN ORDER OF CONDITIONS ISSUED UNDER DEP FILE No. SE76-1504.

SITE PLAN

SCALE: 1"=30'



G.A.F. ENGINEERING, INC.
 PROFESSIONAL ENGINEERS & LAND SURVEYORS
 286 MAIN STREET - WAREHAM, MA 02571
 TEL: (508) 293-6600 FAX: (508) 293-6634
 E-MAIL: info@gafeng.com

FINAL AS-BUILT PLAN
 "THE PRESERVE ON THE WEWANTIC"
 PRESERVATION LANE
 WAREHAM, MA

PREPARED FOR:
SCOTT BLAGDEN REAL ESTATE LTD
 WAREHAM, MA
 11 TWIN'S BEACH LANE

DATE: SEPT. 8, 2023
 DRAWN BY: JMP
 CHECKED BY: RAB
 JOB NO.: 21-9697
 SCALE: 1" = 30'

APPROVED BY: [Signature]

DATE: BY: APPD: REV. DATE BY: APPD: REV. DATE BY: APPD:

JOB NO.: 21-9697
 DWG. NO.: 1 OF 1