



**HUNTINGTON**  
**HOMES** SINCE 1978

## Bridgewater



### Specs

---

- Floors:
- Bedrooms: **1**
- Bathrooms: **1**
- Sq. Feet: **1232**



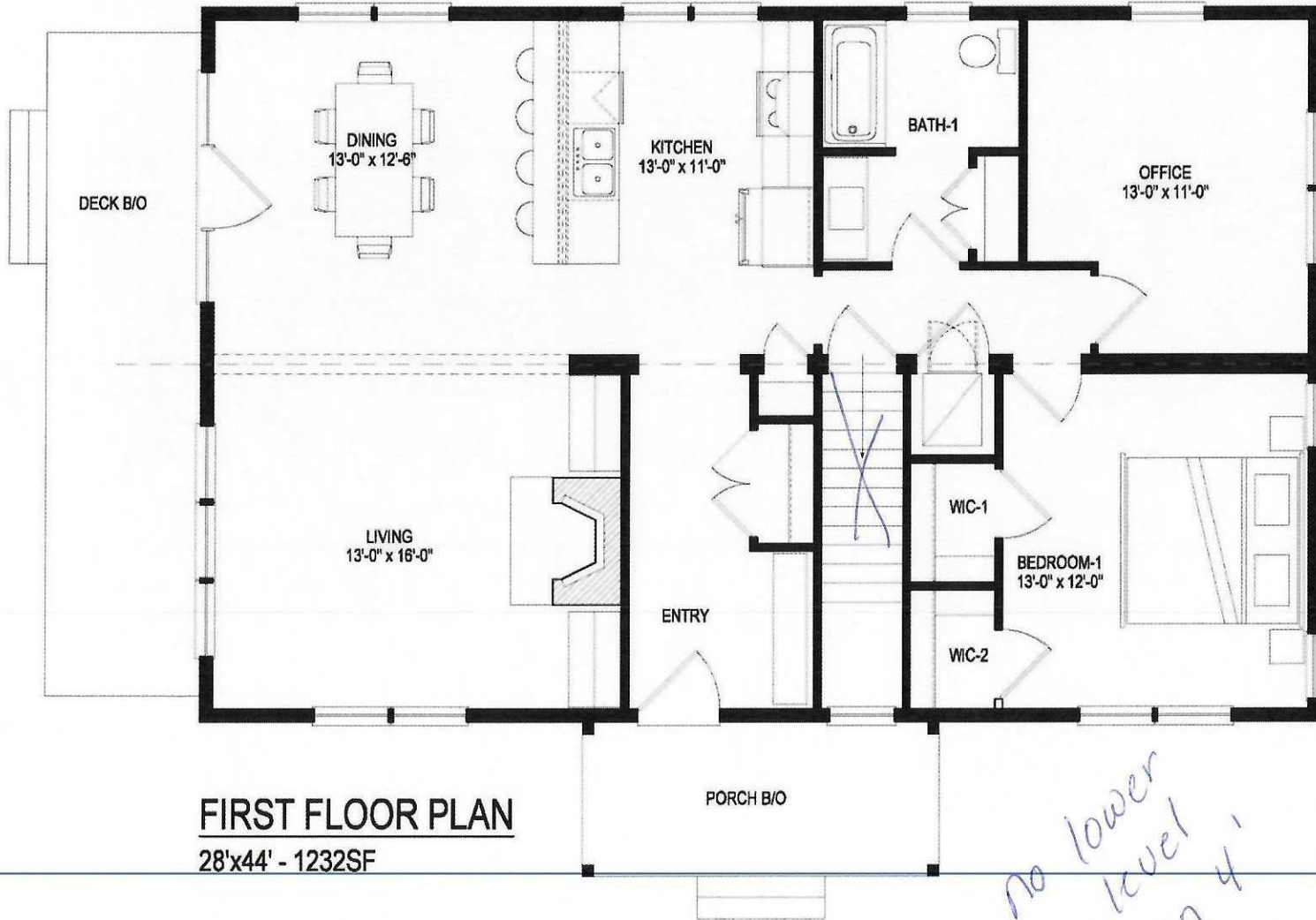


**HUNTINGTON**  
**HOMES** SINCE 1978

ADA

move wall  
into "Office"

side by side w/d



no lower  
level  
on 4'