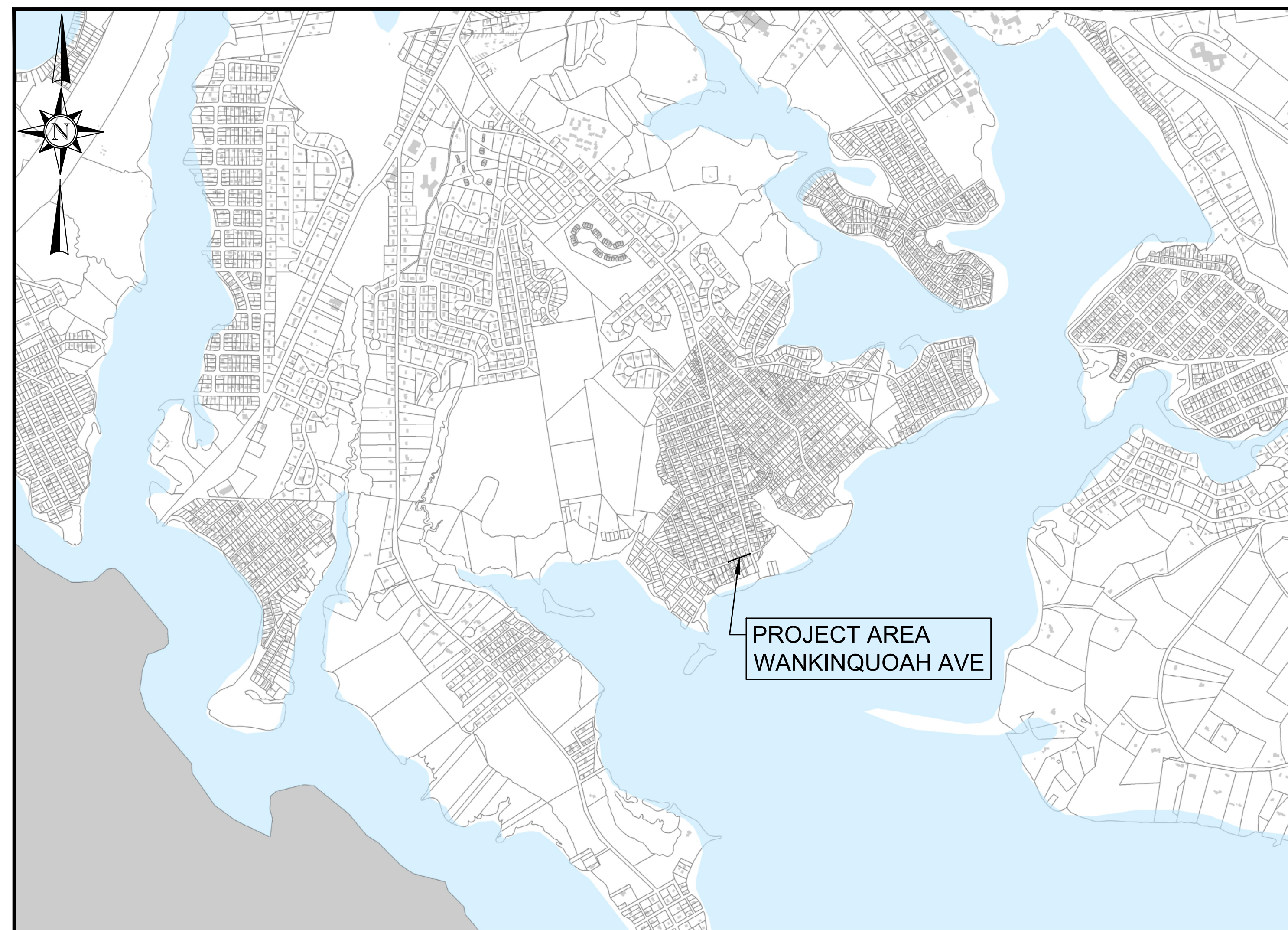


TOWN OF WAREHAM, MASSACHUSETTS WAREHAM WATER POLLUTION CONTROL SWIFTS BEACH EMERGENCY SEWER REPAIR CONTRACT NO. XXX MAY 2023



WAREHAM WATER POLLUTION CONTROL

GUY CAMPINHA, DIRECTOR OF WATER POLLUTION CONTROL



LOCATION MAP
NOT TO SCALE

PREPARED BY:



ISSUE DATE: MAY 2023

PLAN INDEX

<u>SHEET NO.</u>	<u>DESCRIPTION</u>
G-1	LOCUS PLAN
G-2	LEGEND AND GENERAL NOTES
C-1	PROPOSED UTILITY PLAN
#### thru ####	CONSTRUCTION DETAILS

**NOT FOR
CONSTRUCTION**



REGISTERED PROFESSIONAL DATE

5/15/2023 2:33 PM J:\23.10914 - WAREHAM SWIFTS BEACH EMERGENCY REPAIRS\AUTOCAD\PLAN SET\LOCUS.DWG



AERIAL IMAGERY BY: NEARMAP

NUMBER	DATE	MADE BY	CHECKED BY	REVISIONS

DRAWN BY:
CM

DESIGNED BY:
RG

CHECKED BY:
RD

REGISTERED PROFESSIONAL

ROBERT A. DRANE
CIVIL
No. 41642

5/24/23

PREPARED BY

BETA

www.BETA-inc.com

SUBCONSULTANT

SCALE

1"=50'

UNLESS OTHERWISE NOTED OR CHANGED BY REPRODUCTION

TITLE

**TOWN OF WAREHAM, MASSACHUSETTS
EMERGENCY SEWER REPAIR**

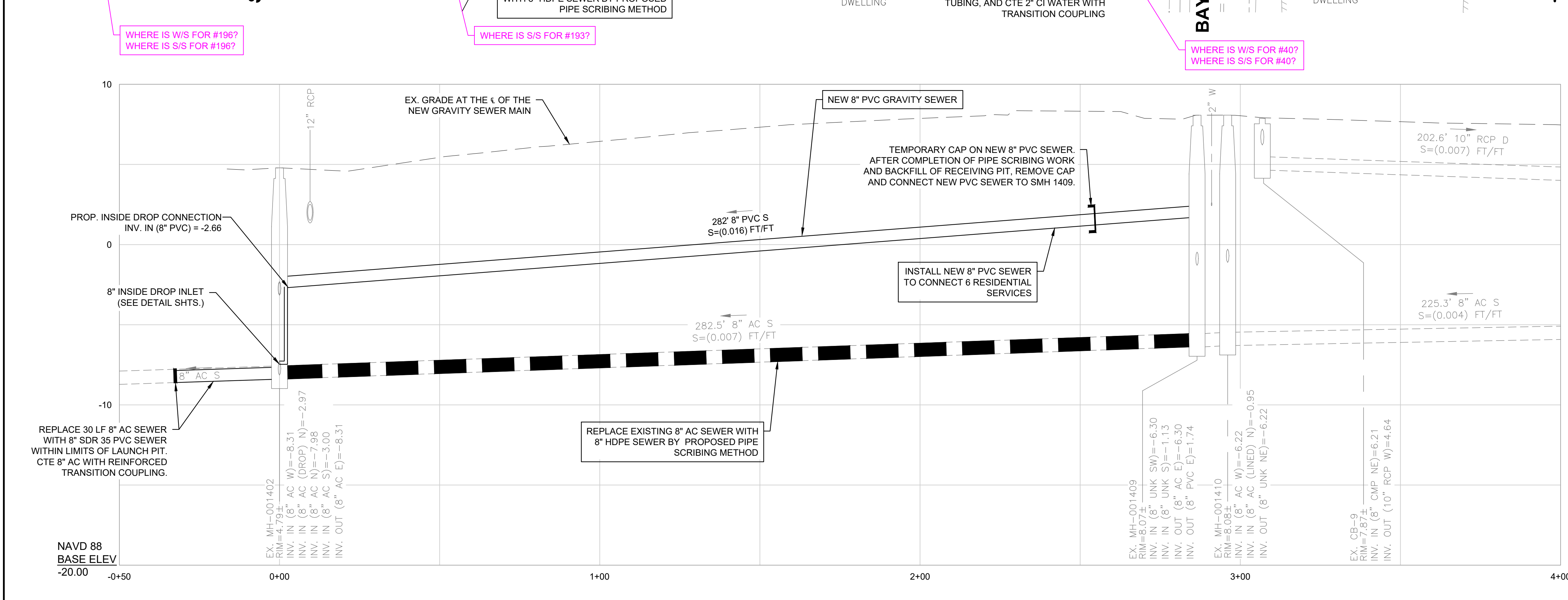
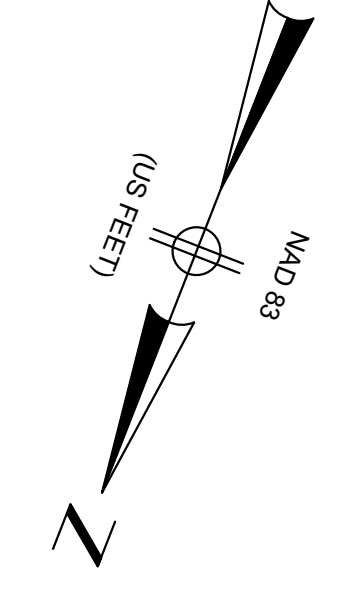
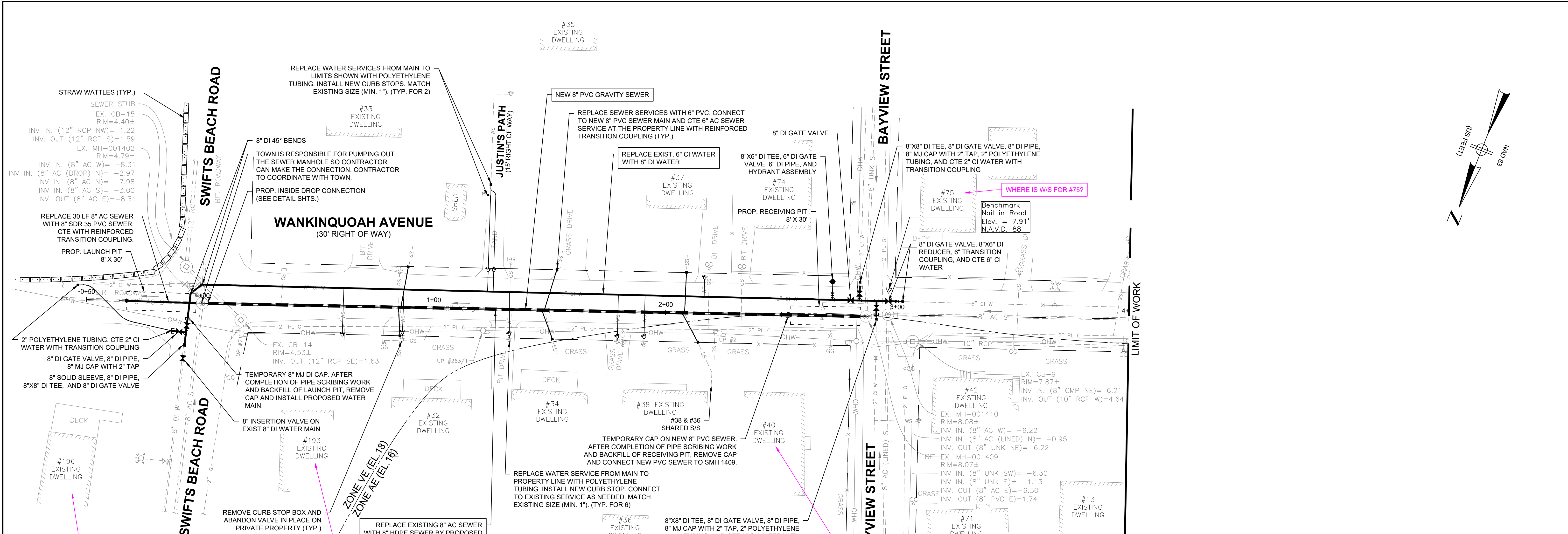
LOCUS PLAN

BETA JOB NO. 10914

ISSUE DATE MAY 2023

SHEET NO. G-1

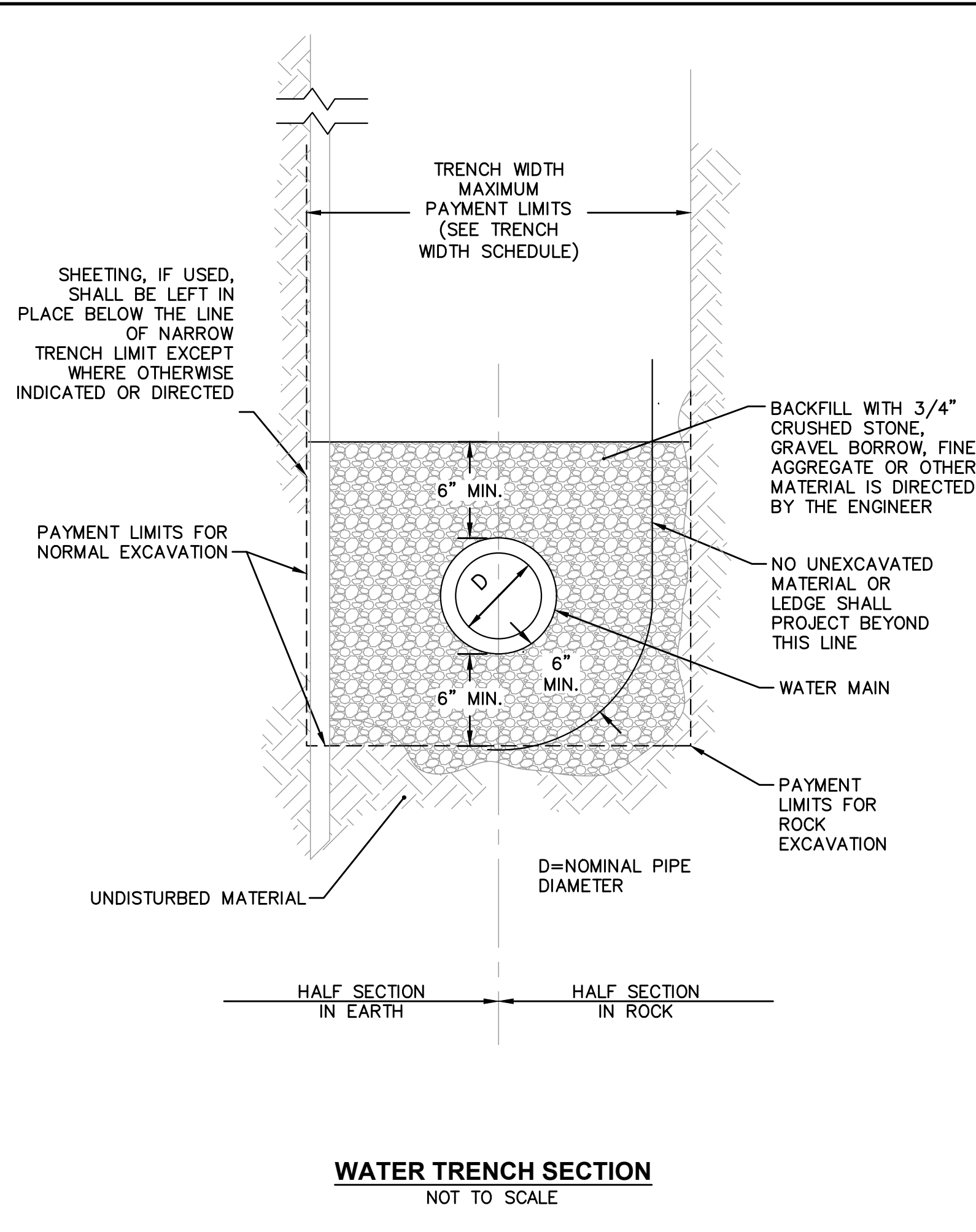
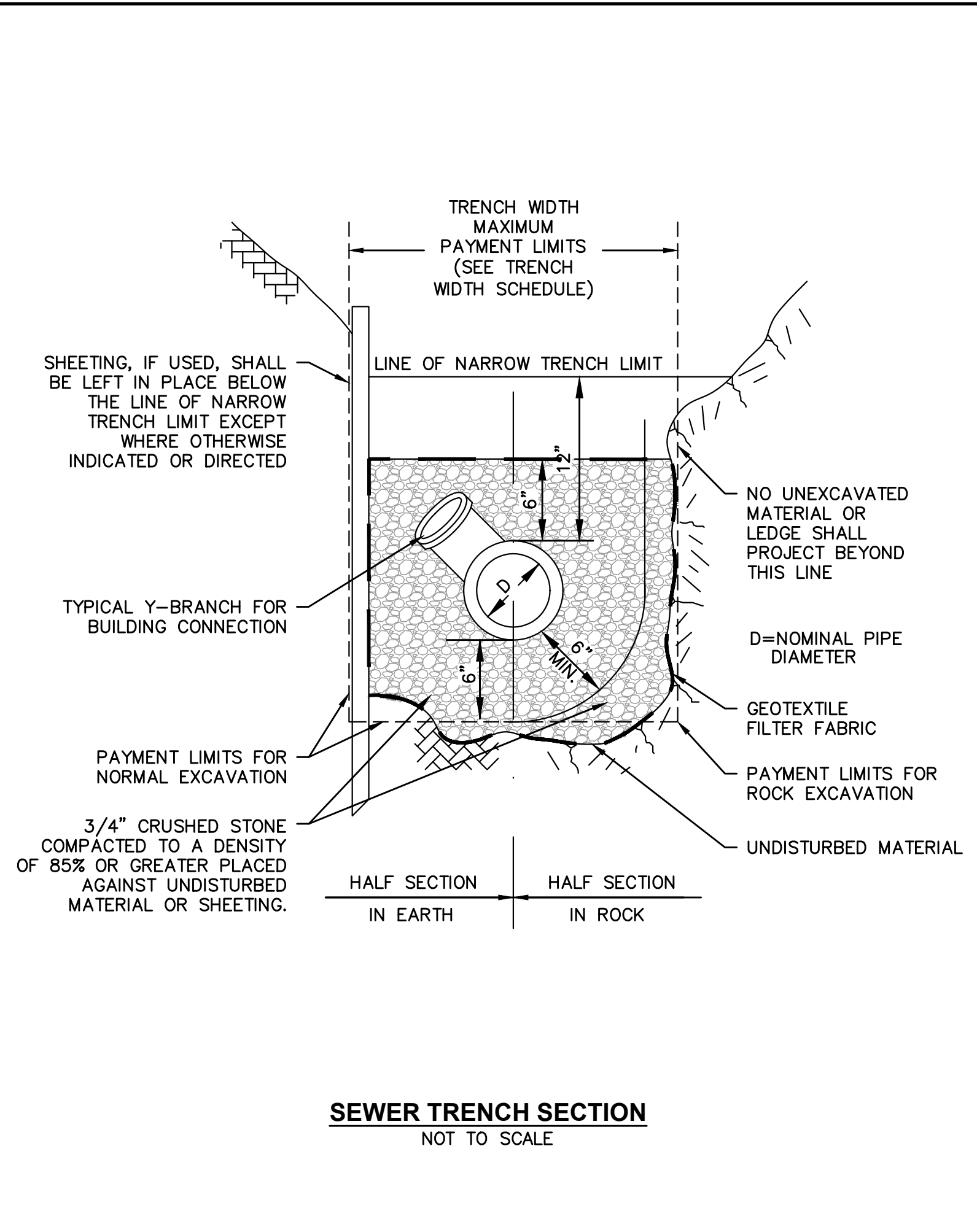
5/15/2023 3:39 PM D:\23_10914 - WAREHAM SWIFTS BEACH EMERGENCY REPAIRS\AUTOCAD\PLAN SET\10188_PR_PLAN 1.DWG



- SEQUENCE OF CONSTRUCTION:**
1. INSTALL THE PROPOSED PVC SEWER MAIN AND LATERAL CONNECTIONS.
 2. INSTALL TEMPORARY WATER BYPASS SYSTEM. CONTRACTOR TO SUBMIT SHOP DRAWINGS AND BYPASS PLANS PRIOR TO CONSTRUCTION.
 3. INSTALL PROPOSED WATER INSERTION VALVE ON SWIFTS BEACH ROAD.
 4. INSTALL PROPOSED WATER VALVE CLUSTER ON SWIFTS BEACH ROAD AND RECONNECT 2" WATER MAIN FOR OCEANSIDE DRIVE. CONTRACTOR TO COORDINATE WATER SHUTDOWN WITH OWNER AND ENGINEER.
 5. EXCAVATE PROPOSED ACCESS PITS AND INSTALL EXCAVATION SUPPORT AND DEWATERING EQUIPMENT. CONTRACTOR TO SUBMIT SHOP DRAWINGS PRIOR TO EXCAVATION.
 6. INSTALL THE 8" HDPE SEWER BY PROPOSED PIPE SCRIBING METHOD.
 7. INSTALL PROPOSED WATER VALVE CLUSTER AT BAYVIEW STREET, WATER MAIN PIPING AND SERVICE CONNECTIONS ON WANKINQUOAH AVENUE. CONNECT NEW WATER MAIN TO PREVIOUSLY INSTALLED VALVE CLUSTER ON SWIFTS BEACH ROAD. TEST AND DISINFECT WATER MAIN PRIOR TO ACTIVATION IN ACCORDANCE WITH SPECIFICATIONS.

- NOTES:**
1. PROPOSED GRAVITY SEWER MAIN TO MAINTAIN 10 LF HORIZONTAL SEPARATION FROM WATER MAIN WHERE POSSIBLE. WHERE PROPOSED GRAVITY SEWER MAIN IS WITHIN 10 LF AND AT ALL WATER MAIN CROSSINGS PROPOSED GRAVITY SEWER MAIN SHALL BE SLEEVED.
 2. PROPOSED SEWER SERVICE LATERALS THAT CROSS OVER EXISTING WATER MAINS SHALL BE SLEEVED FROM THE PROPERTY LINE TO THE PROPOSED GRAVITY SEWER MAIN.
 3. THE CONTRACTOR WILL BE REQUIRED TO INSTALL AND MAINTAIN EROSION CONTROL PROTECTION BAGS IN ALL CATCH BASINS WITHIN THE LIMITS OF WORK DURING CONSTRUCTION.
 4. THE CONTRACTOR SHALL ASSUME THAT ALL CATCH BASINS ARE ABOVE THE EXISTING WATER MAIN. ANY CATCH BASIN DAMAGED DURING CONSTRUCTION SHALL BE REPLACED STRUCTURE TO STRUCTURE AT HIS OWN EXPENSE WITH PVC PIPE OR AS DIRECTED BY THE ENGINEER.
 5. ALL EXISTING SEWERS ARE 8" DIAMETER.
 6. SEWER MATERIALS ARE EITHER AC OR UNKNOWN.
 7. SEWER ON WANKINQUOAH AVE AS WELL AS NORTH OF WANKINQUOAH AVE ON BAYVIEW AVE IS LINED AC.
 8. RIM ELEVATIONS FROM SURVEY.
 9. INVERT AND DROP ELEVATIONS IN ALL SEWER MANHOLES WERE FIELD MEASURED BUT SOME OF THE MANHOLES WERE SURCHARGED AT THE TIME.
 10. DRAIN PIPE CONNECTIVITY FROM TOWN RECORD PLANS AND FIELD INSPECTION.
 11. IT SHALL BE THE RESPONSIBILITY OF THE CONTRACTOR TO VERIFY LOCATIONS AND ELEVATIONS OF EXISTING UTILITIES PRIOR TO COMMENCEMENT OF CONSTRUCTION.
 12. CONTRACTOR TO DOCUMENT HORIZONTAL LOCATION OF ALL EXISTING SEWER SERVICES, ELEVATION OF SERVICE, PIPE SIZE AND MATERIAL.

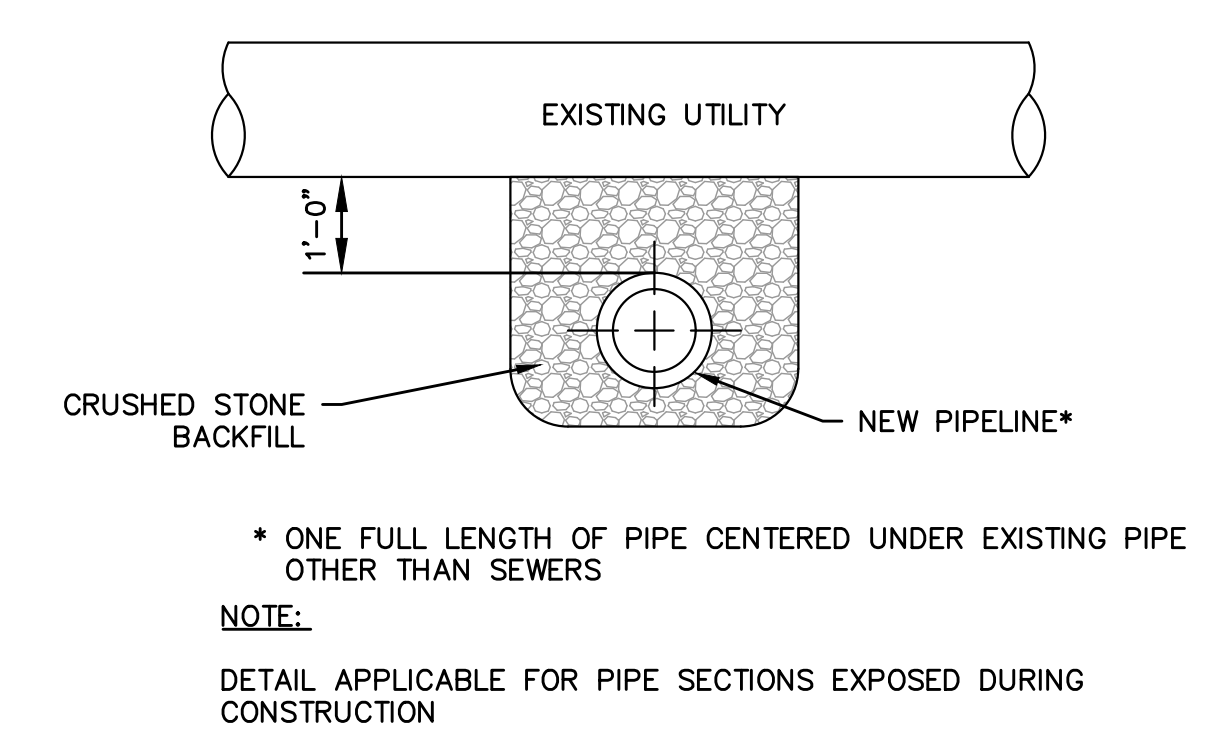
DRAWN BY: CM DESIGNED BY: RG CHECKED BY: RD				REGISTERED PROFESSIONAL: ROBERT A. DRAKE CIVIL No. 41642 PREPARED BY: BETA SUBCONSULTANT:		SCALE: HOR. SCALE IN FEET: 1"=20' VER. SCALE IN FEET: 1"=4' UNLESS OTHERWISE NOTED OR CHANGED BY REPRODUCTION		TITLE: TOWN OF WAREHAM, MASSACHUSETTS EMERGENCY SEWER REPAIR PROPOSED UTILITY PLAN WANKINQUOAH AVE PLAN & PROFILE STA. (0+00 TO 4+00)		BETA JOB NO. 10914 ISSUE DATE: MAY 2023 SHEET NO. C-1	
NUMBER	DATE	MADE BY	CHECKED BY	REVISIONS							



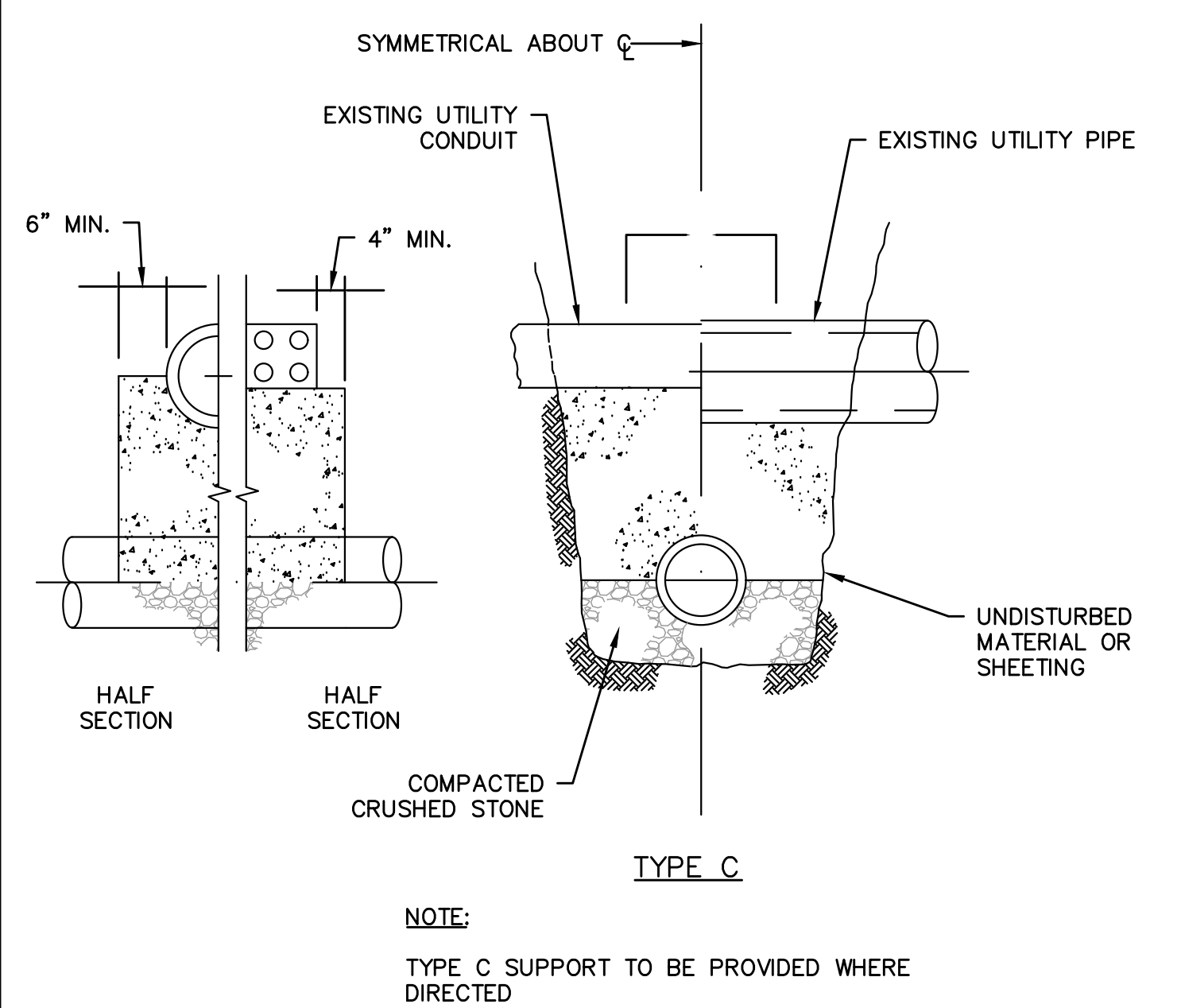
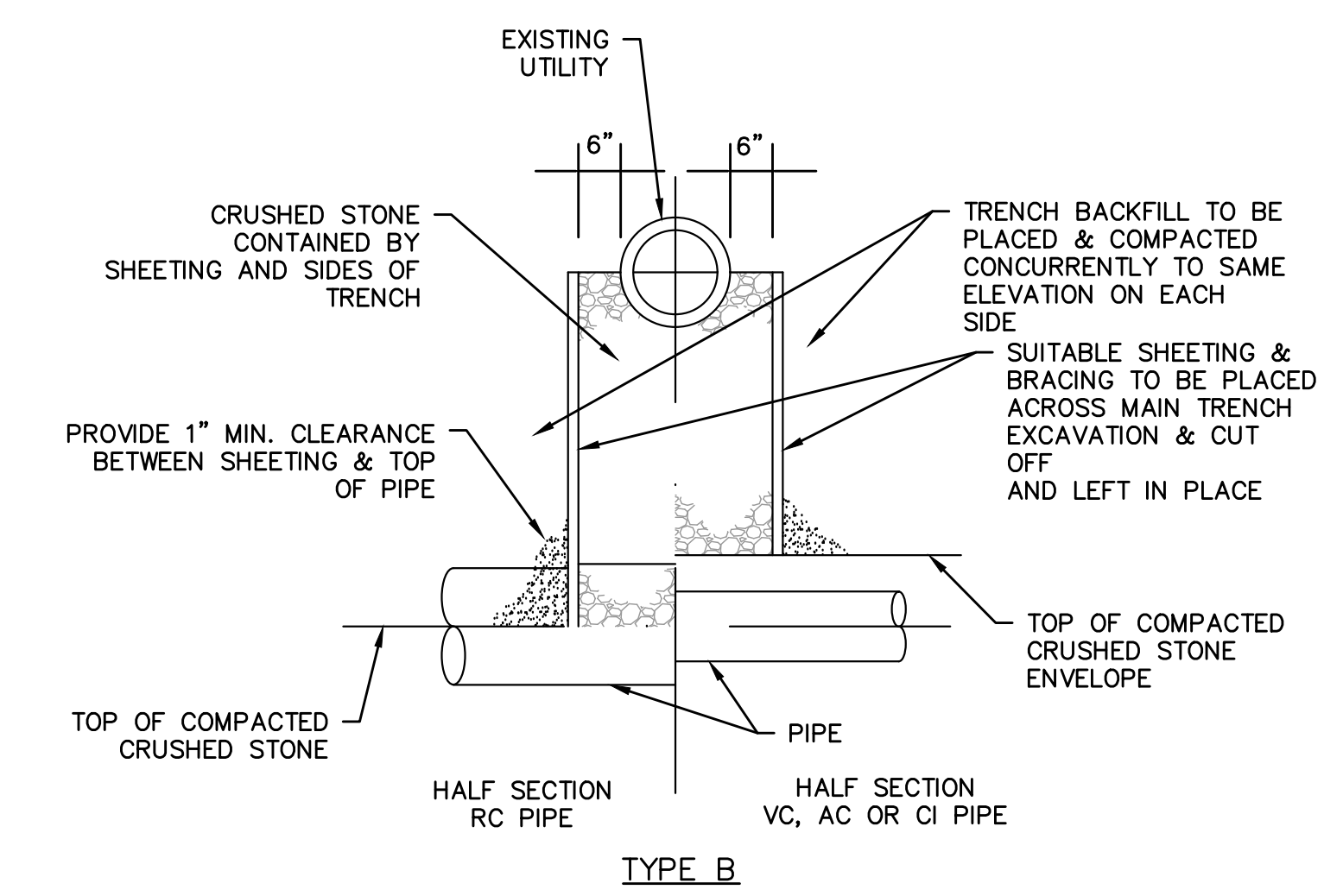
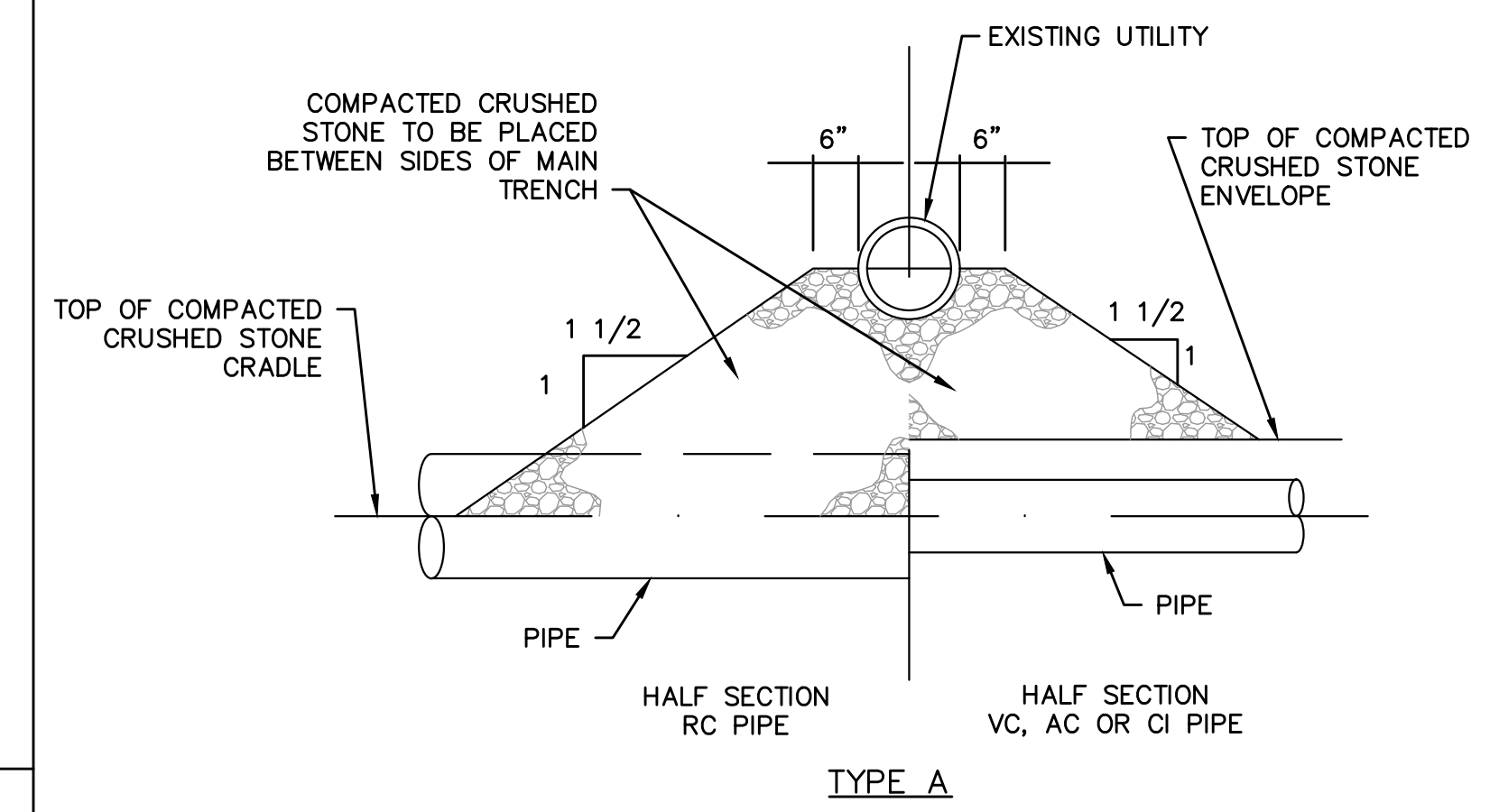
DIAMETER OF PIPE D IN INCHES	MAXIMUM PAYMENT LIMITS						
	TRENCH WIDTH IN FEET		TEMPORARY TRENCH PAVEMENT WIDTH IN FEET		PERMANENT TRENCH PAVEMENT WIDTH IN FEET*		
	TRENCH DEPTH	TRENCH DEPTH	TRENCH DEPTH	TRENCH DEPTH	TRENCH DEPTH	TRENCH DEPTH	
< OR = 10'	> 10' TO 20'	< OR = 10'	> 10' TO 20'	< OR = 10'	> 10' TO 20'	< OR = 10'	> 10' TO 20'
12 AND SMALLER	5.00	6.00	6.00	7.00	8.00	9.00	

- NOTES:**
- PERMANENT TRENCH PAVEMENT INCLUDES 1' CUT BACK OF TEMPORARY PAVEMENT ALONG EACH SIDE OF THE TRENCH
 - TRENCH DEPTH MEASURED FROM THE EXISTING GROUND SURFACE TO 6" BELOW THE BOTTOM OF THE CONSTRUCTED PIPE.
 - QUANTITIES FOR PAYMENT SHALL BE IN ACCORDANCE WITH THE ABOVE LIMITS OR THE ACTUAL WIDTHS, WHICHEVER IS LESS.

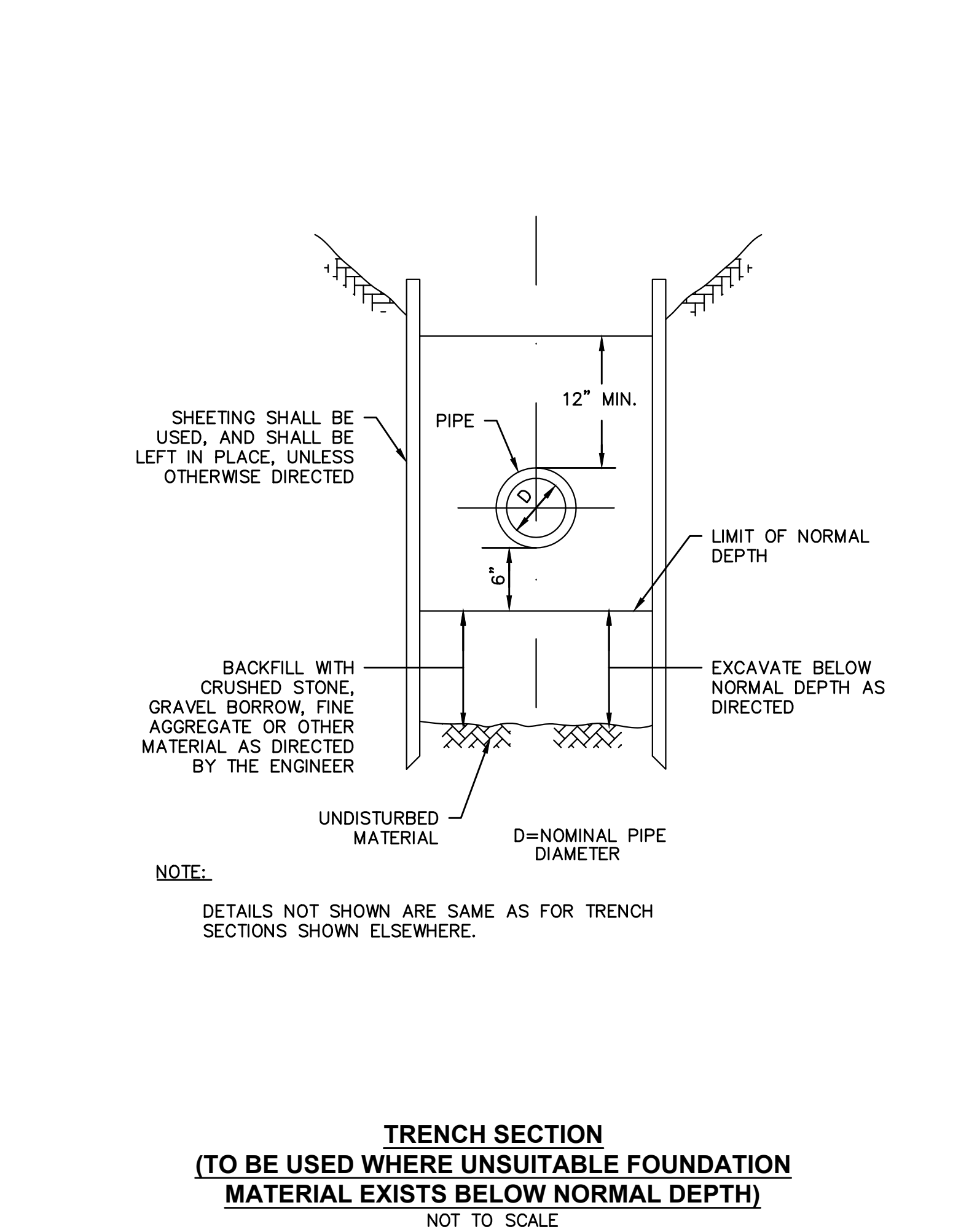
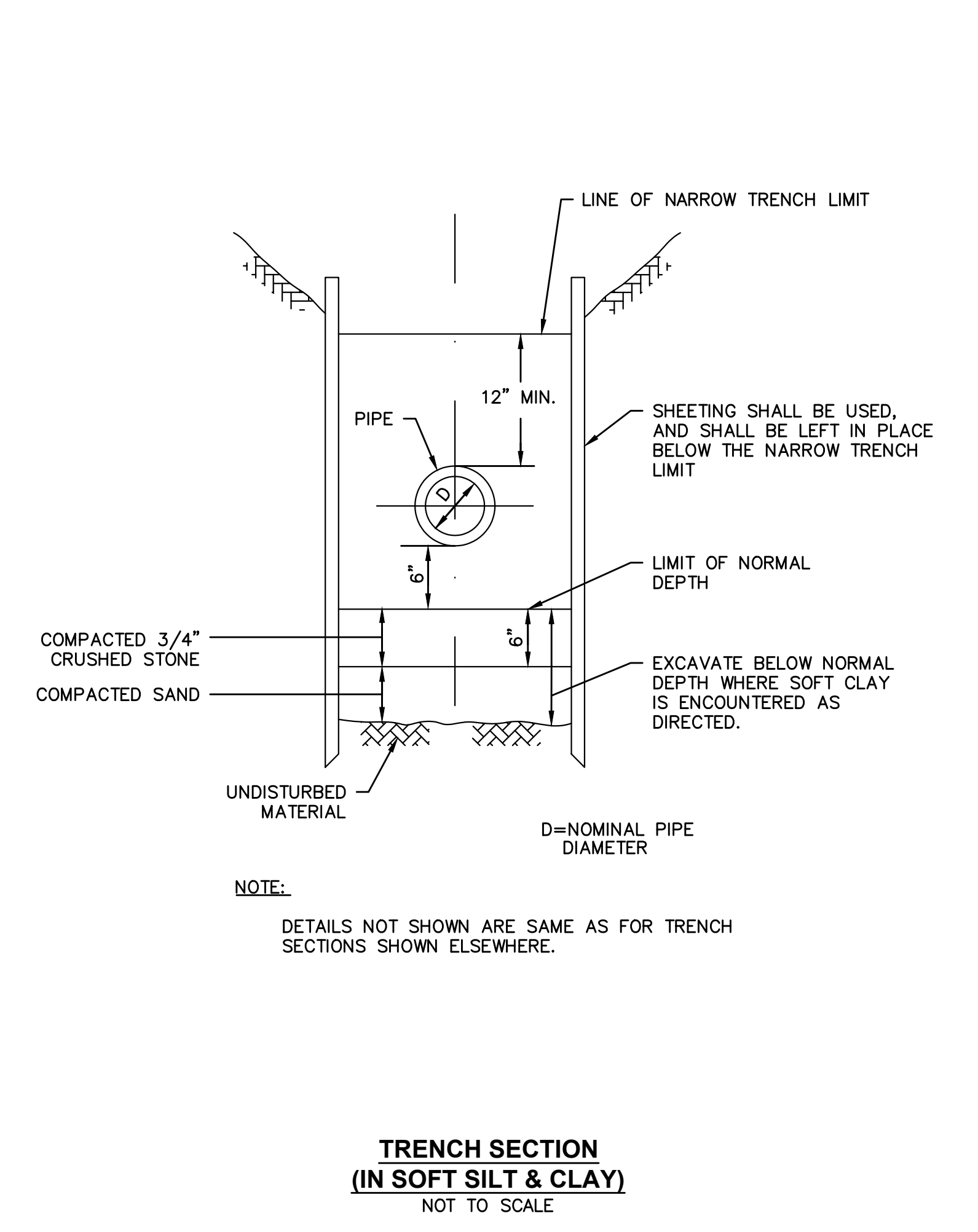
TRENCH WIDTH SCHEDULE
NOT TO SCALE



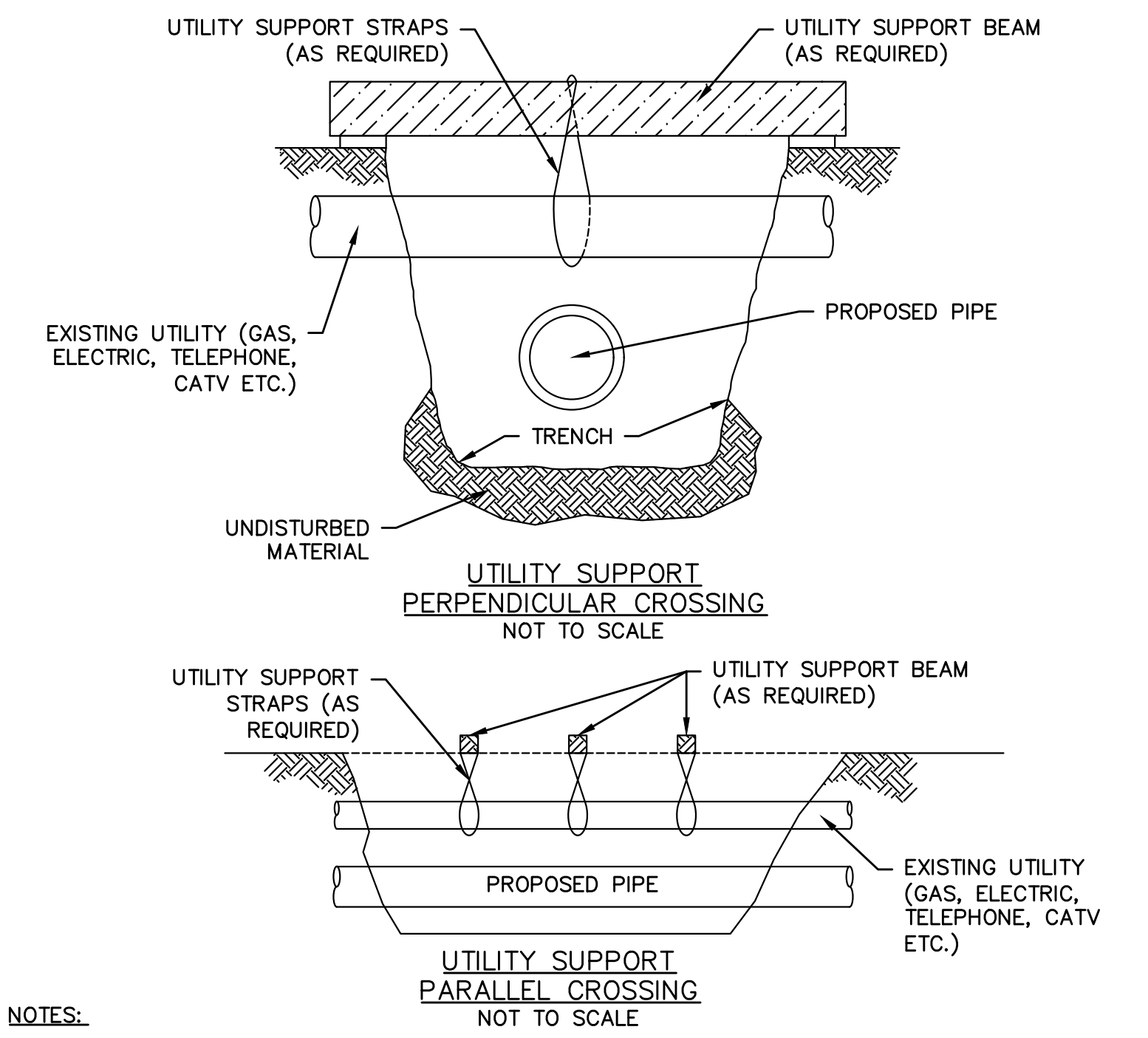
TYPICAL SECTION AT EXISTING UTILITIES
NOT TO SCALE



TYPICAL UTILITY CROSSING
NOT TO SCALE



TRENCH SECTION (TO BE USED WHERE UNSUITABLE FOUNDATION MATERIAL EXISTS BELOW NORMAL DEPTH)
NOT TO SCALE



- NOTES:**
- ALL UTILITIES SHALL BE SUPPORTED AS SHOWN WHEN EXPOSED AND THE POTENTIAL EXISTS FOR UNDERMINING BY THE CONSTRUCTION ACTIVITY. THE SUPPORT SYSTEM SHALL BE IN PLACE PRIOR TO UNDERMINING OF UTILITY. ALL SUPPORT SYSTEMS SHALL HAVE SUFFICIENT TENSION SO THAT NO DEFLECTION OF THE EXISTING UTILITY WILL OCCUR ONCE UNDERMINED. THE QUANTITY, PLACEMENT AND MATERIALS USED FOR THE SUPPORT SYSTEM SHALL BE SUFFICIENT IN STRENGTH SO THAT NO DEFLECTION OF THE EXISTING UTILITY WILL OCCUR.
 - WHEN CONSTRUCTION ACTIVITY IS COMPLETED, THE TRENCH SHALL BE BACKFILLED WITH CRUSHED STONE AND/OR MATERIAL OTHERWISE REQUIRED BY THE AFFECTED UTILITY COMPANY AND COMPACTED AROUND THE EXISTING UTILITY PRIOR TO REMOVING THE SUPPORT MECHANISM.

UTILITY SUPPORT
NOT TO SCALE

5/15/2023 2:33 PM - J123.10914 - WAREHAM SWIFTS BEACH EMERGENCY REPAIRS/AUTOCAD/PLAN SET/DETAILS.DWG

NUMBER	DATE	MADE BY	CHECKED BY	REVISIONS

DRAWN BY: CM

DESIGNED BY: RG

CHECKED BY: RD

REGISTERED PROFESSIONAL PREPARED BY

ROBERT A. DRANE CIVIL No. 41842

BETA
www.BETA-inc.com

SUBCONSULTANT

SCALE: NONE

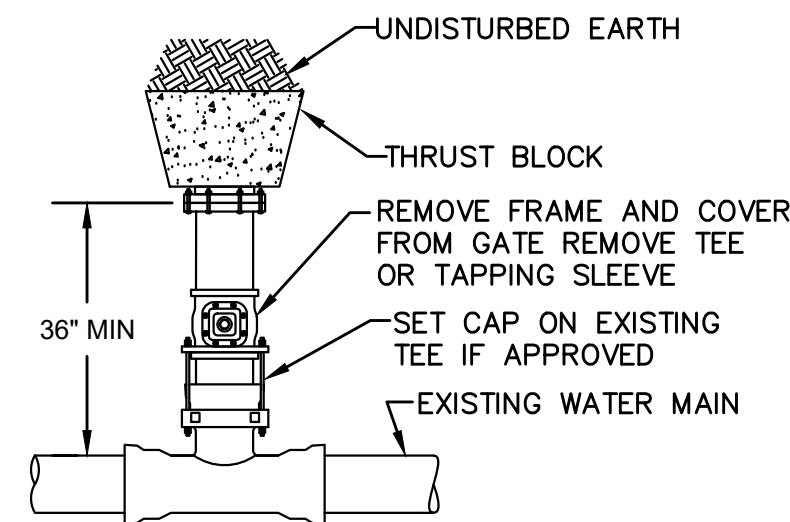
TITLE: TOWN OF WAREHAM, MASSACHUSETTS
EMERGENCY SEWER REPAIR
CONSTRUCTION DETAILS - 1

BETA JOB NO. 10914

ISSUE DATE: MAY 2023

SHEET NO. CD-1

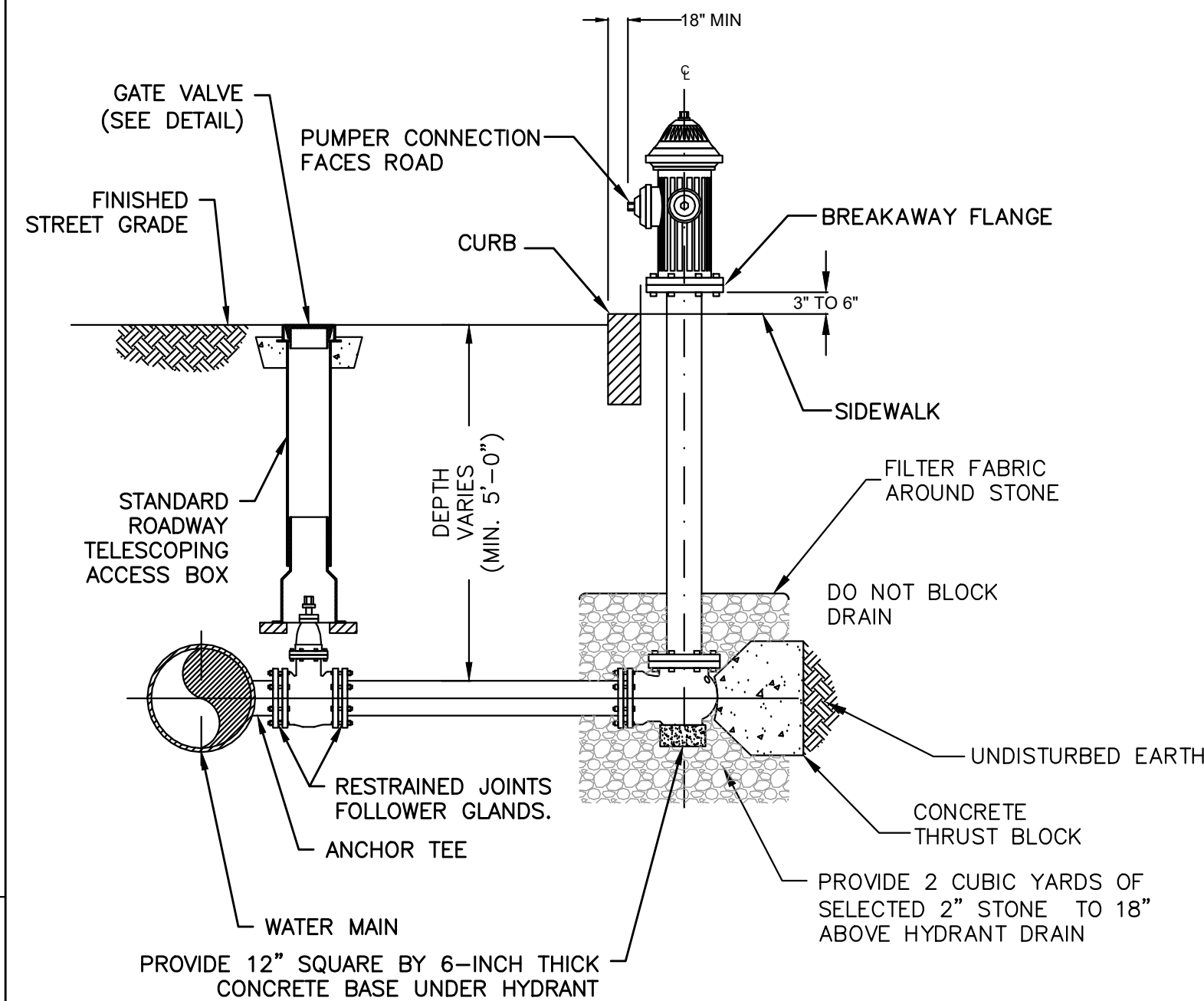
UNLESS OTHERWISE NOTED OR CHANGED BY REPRODUCTION



NOTES:

1. THIS PROCEDURE WILL INVOLVE A WATER MAIN SHUT DOWN THAT THE CONTRACTOR WILL COORDINATE WITH THE ENGINEER AND OWNER.
2. 48-HOUR PRIOR WRITTEN NOTIFICATION OF ALL AFFECTED CUSTOMERS MUST BE PERFORMED BY THE CONTRACTOR.
3. WORK MAY NOT COMMENCE UNTIL ALL APPLICABLE PERMITS HAVE BEEN OBTAINED.
4. ALL WORK MUST BE INSPECTED BY THE ENGINEER PRIOR TO BACKFILLING.

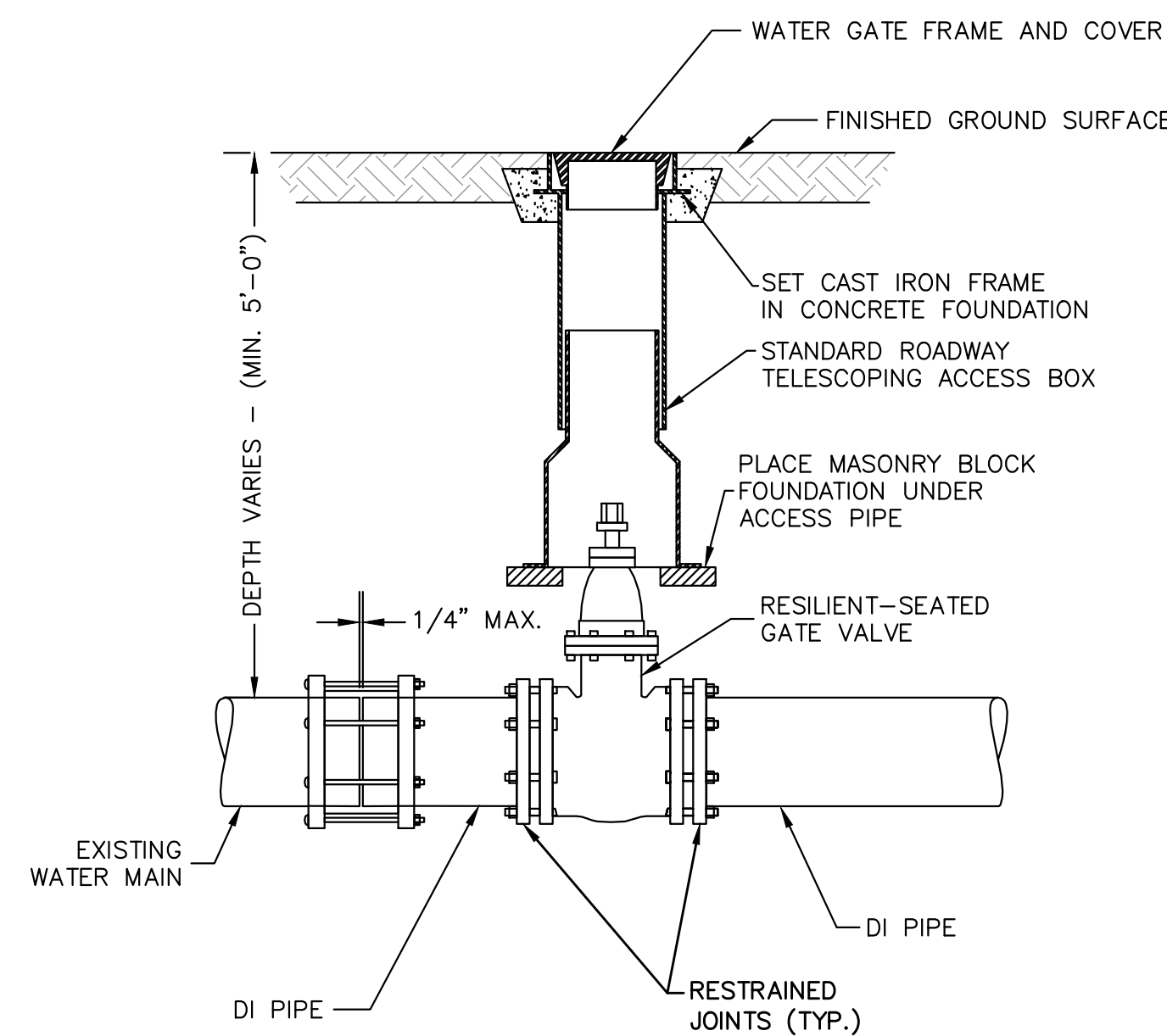
CUTTING AND CAPPING OF WATER CONNECTION 4" AND OVER
NOT TO SCALE



NOTES:

1. PROVIDE HYDRANT AND VALVE JOINTS WITH RESTRAINED MECHANICAL JOINTS.
2. ALL JOINTS BETWEEN ANCHOR TEE AND HYDRANT SHALL BE RESTRAINED.
3. SUPPORT BLOCKS TO BE CONCRETE MASONRY BLOCK.
4. ALL VALVES OPEN LEFT.
5. ALL HYDRANTS OUT OF SERVICE MUST BE BAGGED.
6. HYDRANT TO BE PAINTED ACCORDING TO TOWN'S STANDARD COLOR SCHEME.

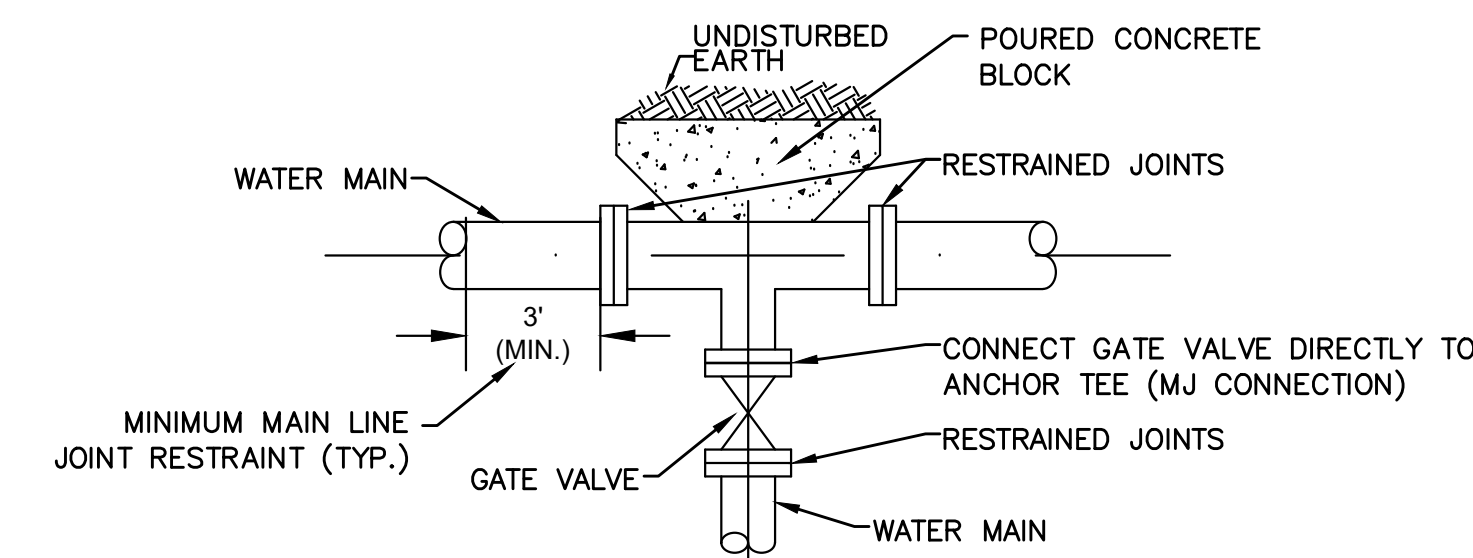
HYDRANT ASSEMBLY
NOT TO SCALE



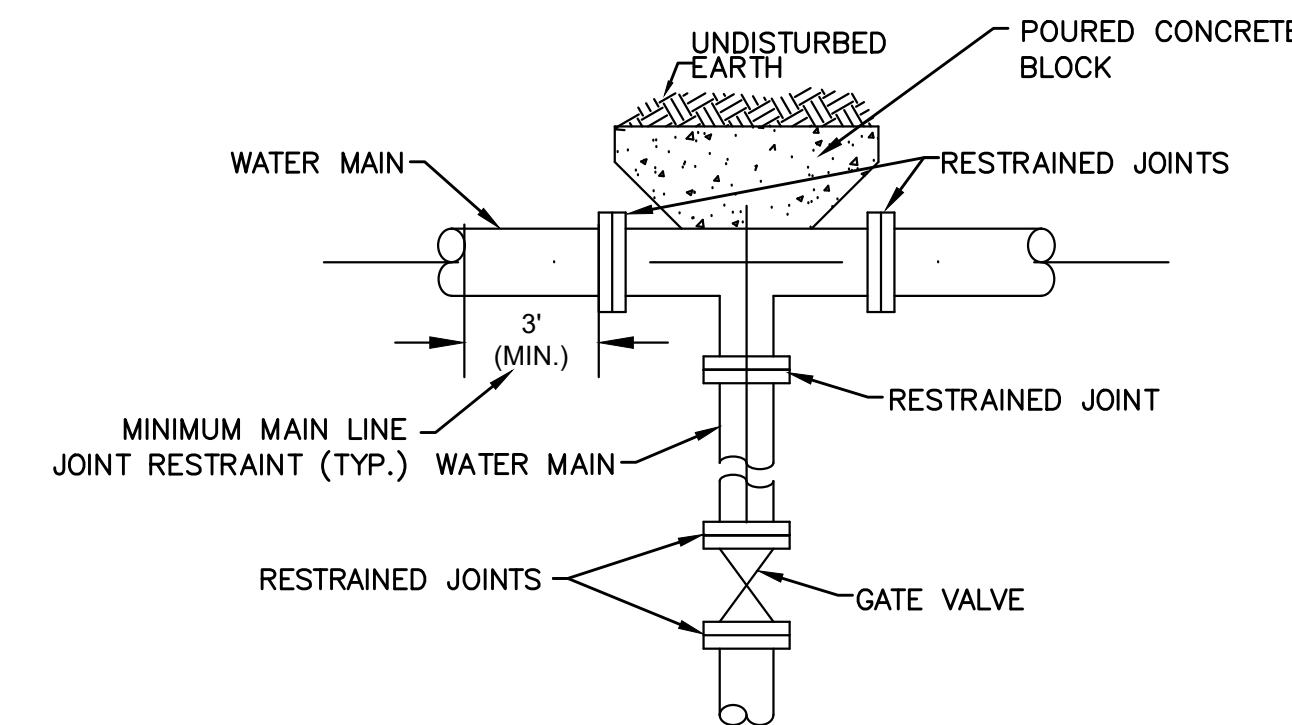
NOTES:

1. ALL EXCAVATION, BACKFILLING AND PAVING SHALL BE IN ACCORDANCE WITH THE TOWN OF SWANSEA REQUIREMENTS.
2. WATER GATE COVER SHALL HAVE A MINIMUM HEIGHT OF FOUR (4) INCHES. BRAND NAME EJ GROUP (FORMERLY LEBARON FOUNDRY CO.) OR EQUAL.

GATE VALVE
NOT TO SCALE



ANCHOR TEE BRANCH

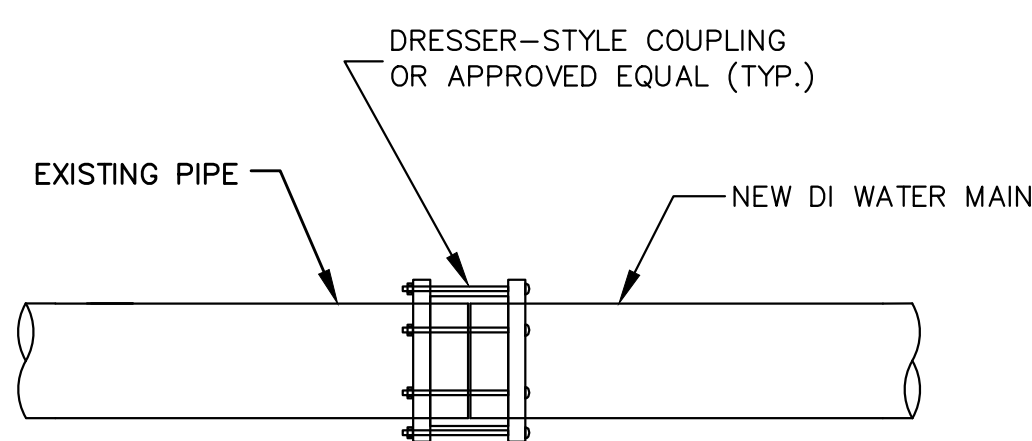


STANDARD BRANCH

NOTES:

1. ALL FITTING AND VALVES SHALL BE "ALL-BELL" FITTINGS.
2. ALL CONNECTIONS SHALL BE RESTRAINED MECHANICAL JOINT (MJ) CONNECTIONS.
3. MAIN LINE TO BE RESTRAINED A MINIMUM OF THREE FEET ON EITHER SIDE OF TEE.
4. SEE RESTRAINT TABLES FOR BRANCH LINE RESTRAINT REQUIREMENTS.

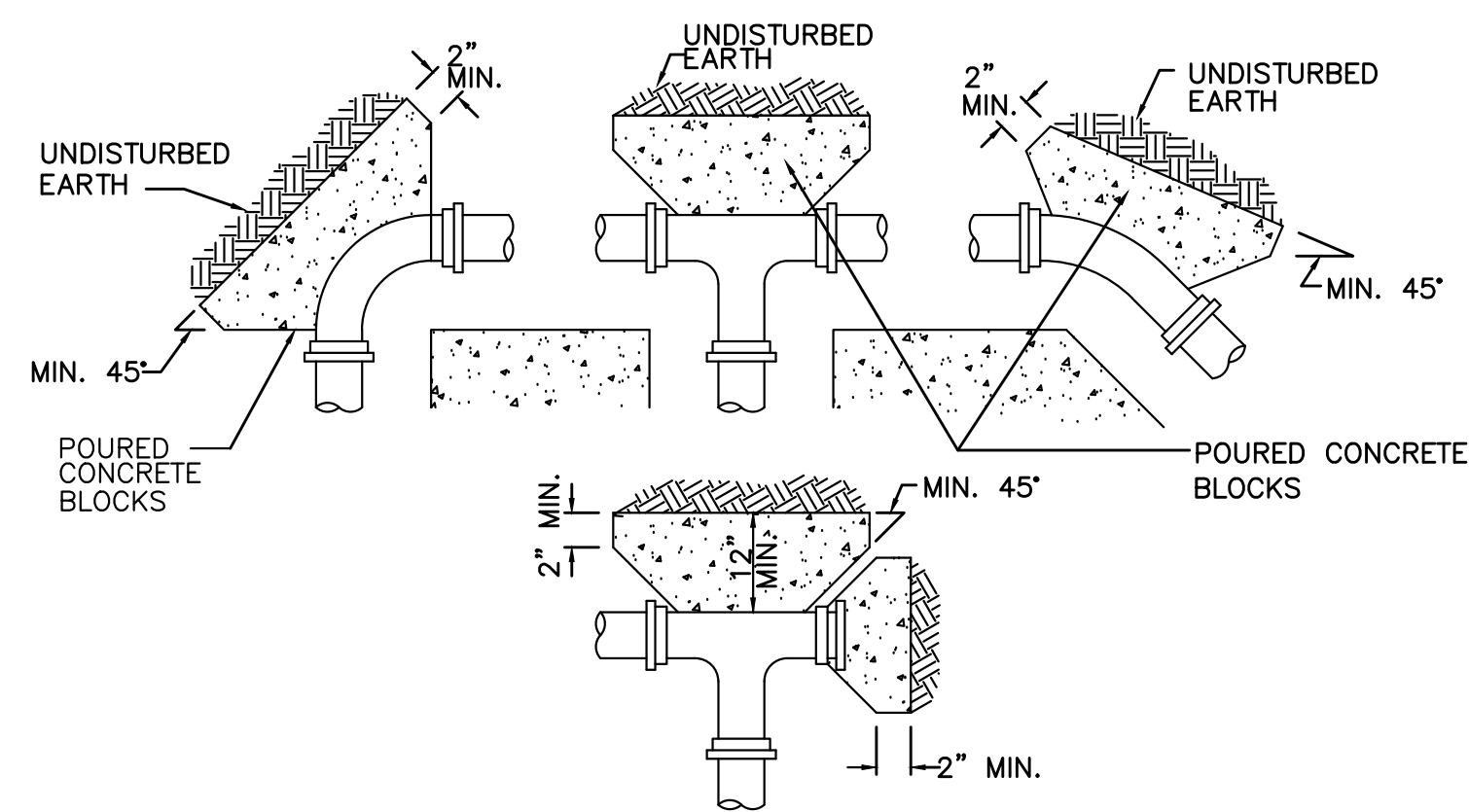
TYPICAL DUCTILE IRON WATER MAIN BRANCHES
NOT TO SCALE



NOTES:

1. DRESSER-STYLE COUPLING TO BE USED ONLY WHERE A SOLID SLEEVE CANNOT BE INSTALLED.
2. CONNECTION SHALL INCLUDE TIE RODS AND FRICTION CLAMPS. (SEE DETAIL)

WATER MAIN COUPLING CONNECTION
NOT TO SCALE



PLAN VIEWS

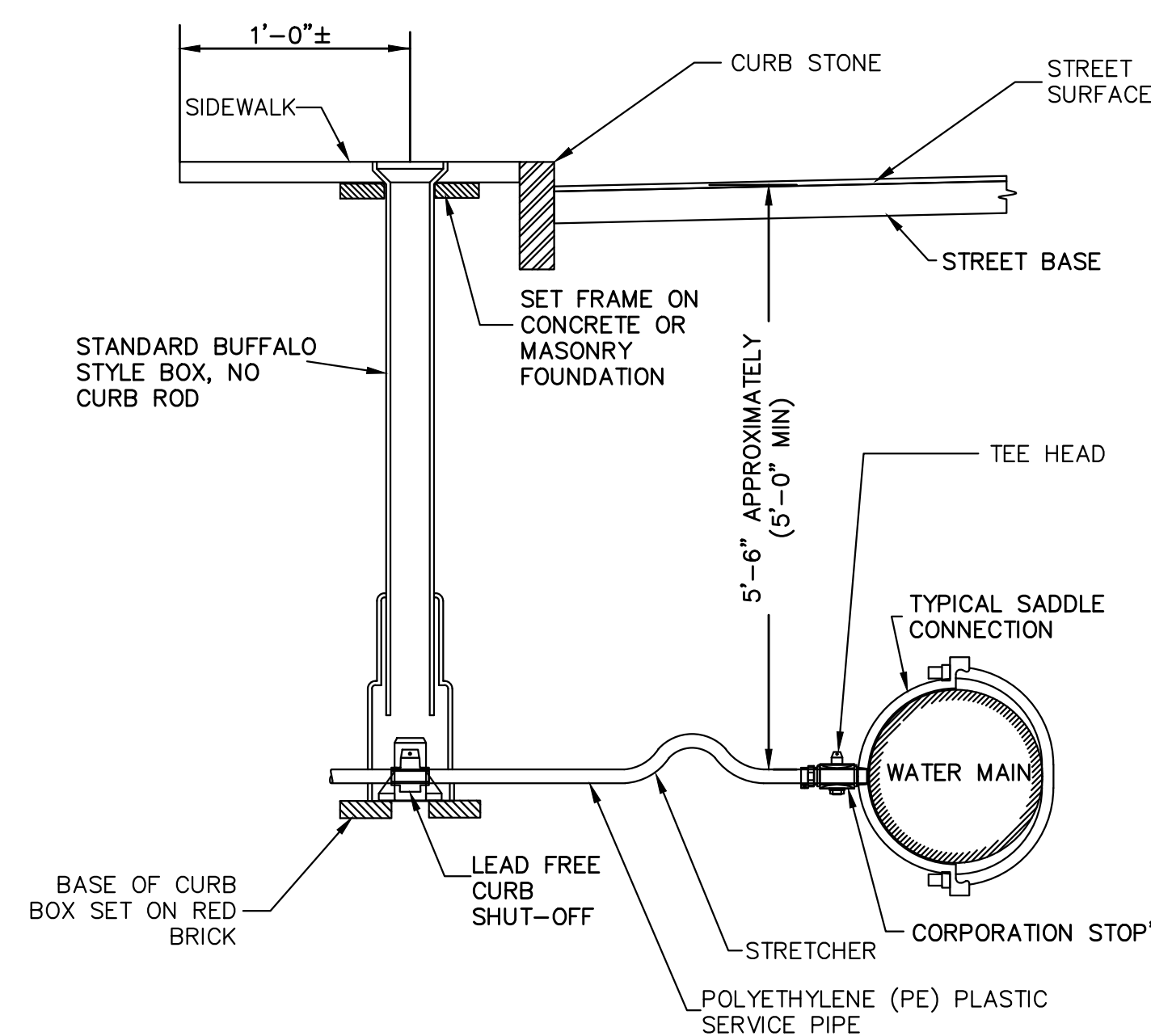
NOMINAL PIPE SIZE (INCHES)	MAXIMUM PIPE O.D. (INCHES)	REQUIRED BEARING AREA (SQ FT)					
		TEES & CAPS	90 DEG	45 DEG	30 DEG	22.5 DEG	11.25 DEG
6	6.90	2.6	3.7	2	1.4	1	.5
8	9.05	5	6.4	3.5	2.3	1.8	0.9

THRUST BLOCK BEARING FOR WATER MAIN

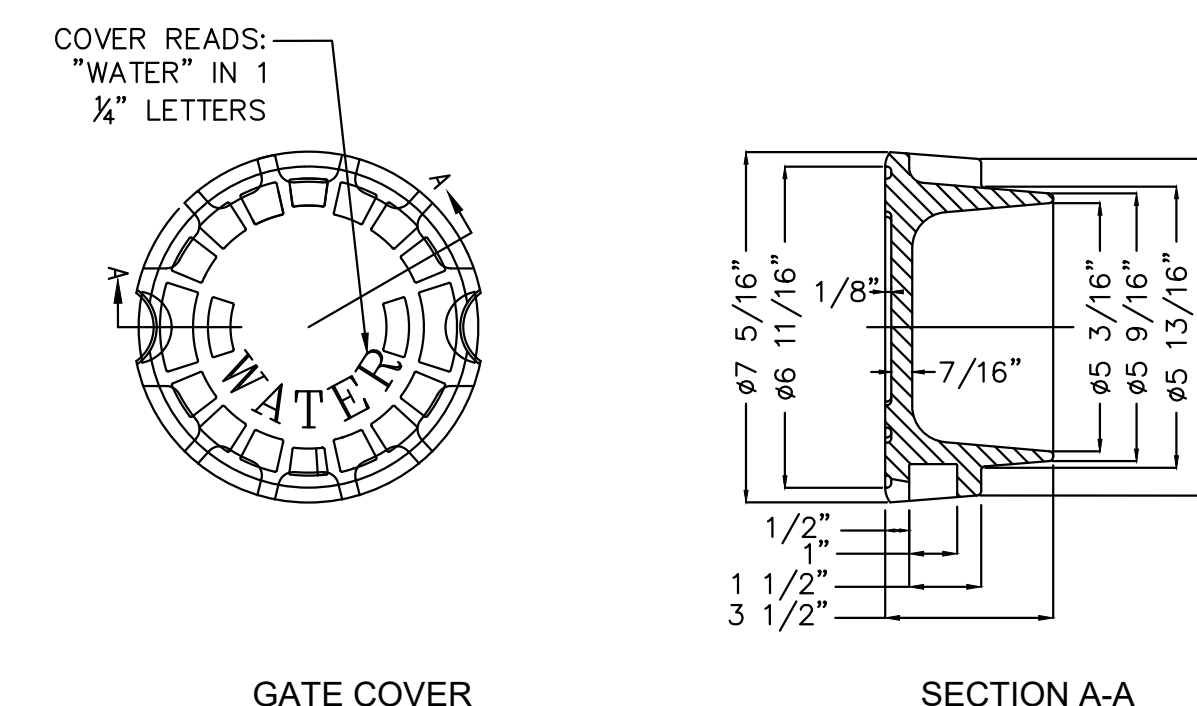
NOTES:

1. SPECIFIC THRUST BLOCK DESIGN SHALL CONFORM TO AWWA GUIDELINES.
2. PLACE 4 MIL. POLYETHYLENE BETWEEN CONCRETE AND FITTING (CONCRETE SHALL NOT INTERFERE WITH JOINT).
3. MINIMUM CONCRETE THICKNESS SHALL BE 12 INCHES.
4. THRUST BLOCK ORIENTATION SHALL BE SUCH THAT THE CENTER OF THE FITTING CORRESPONDS WITH THE CENTER OF THE THRUST BLOCK.
5. THE MINIMUM ALLOWABLE ANGLE (EITHER VERTICAL OR HORIZONTAL) SHALL BE 45 DEGREES.

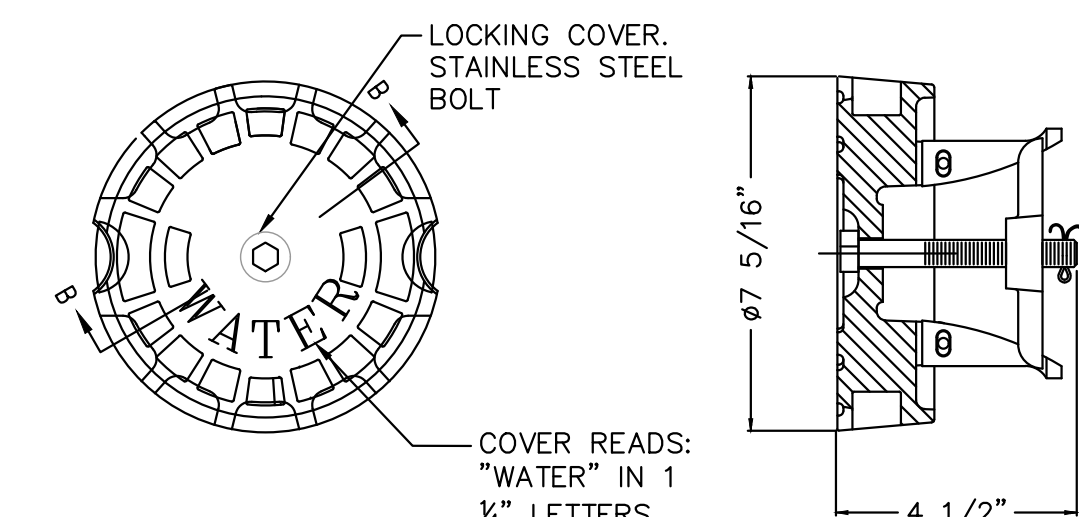
THRUST BLOCK DETAILS
NOT TO SCALE



TYPICAL WATER SERVICE CONNECTION
NOT TO SCALE



GATE COVER

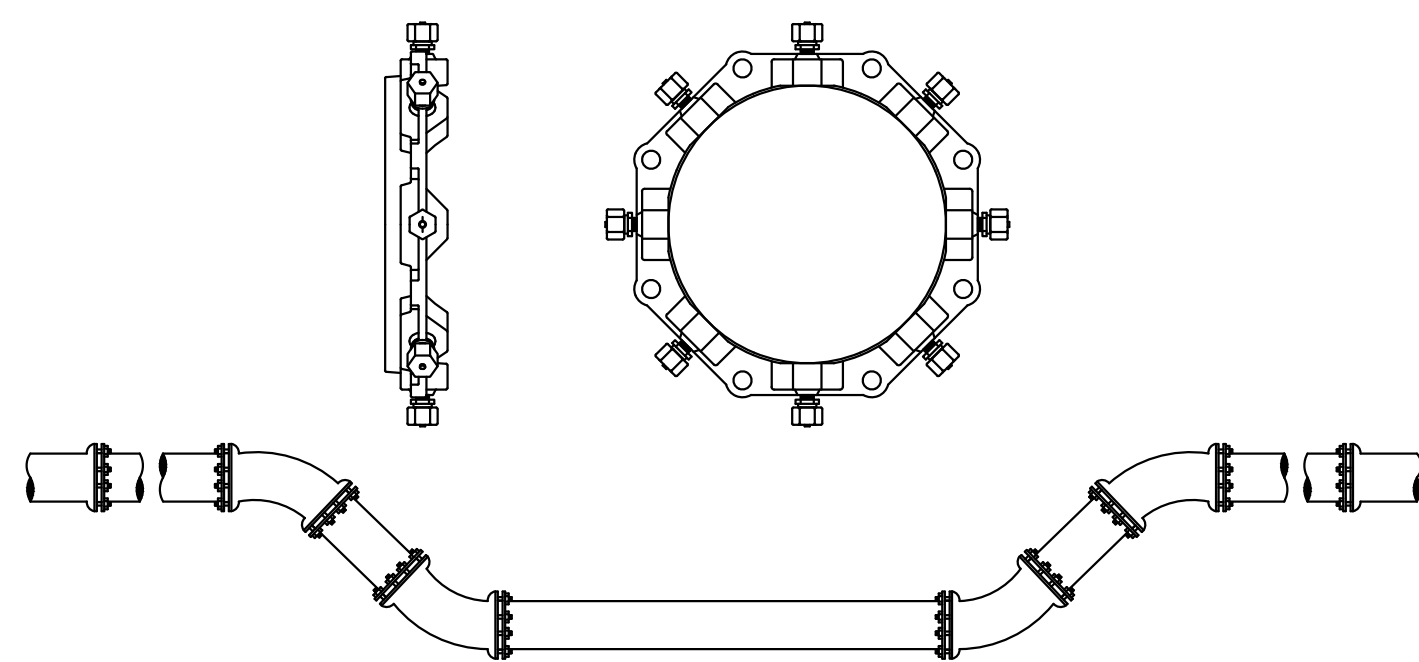


DIVISION GATE COVER

NOTES:

1. WATER GATE COVER SHALL HAVE A MINIMUM HEIGHT OF 3.5 INCHES AND MINIMUM WEIGHT OF 13 POUNDS, BRAND NAME BIBBY-STE-CROIX OR EQUAL.

WATER GATE COVERS
NOT TO SCALE



NOTES:

1. DEVICES NEED TO BE PLACED BEYOND THE AREA OF RESTRAINTS IN ACCORDANCE WITH MANUFACTURERS RECOMMENDATIONS.
2. RESTRAINED JOINT LENGTHS TO BE IN ACCORDANCE WITH SPECIFICATION SECTION 02620.

TYPICAL THRUST RESTRAINT WEDGE ACTION TYPE JOINTS
NOT TO SCALE

5/16/2023 2:33 PM J:\23.10914 - WAREHAM SWIFTS BEACH EMERGENCY REPAIRS\AUTOCAD\PLAN SET\DETAILS.DWG

NUMBER	DATE	MADE BY	CHECKED BY	REVISIONS

DRAWN BY:	CM
DESIGNED BY:	RG
CHECKED BY:	RD

REGISTERED PROFESSIONAL

 PREPARED BY

PREPARED BY

 www.BETA-inc.com

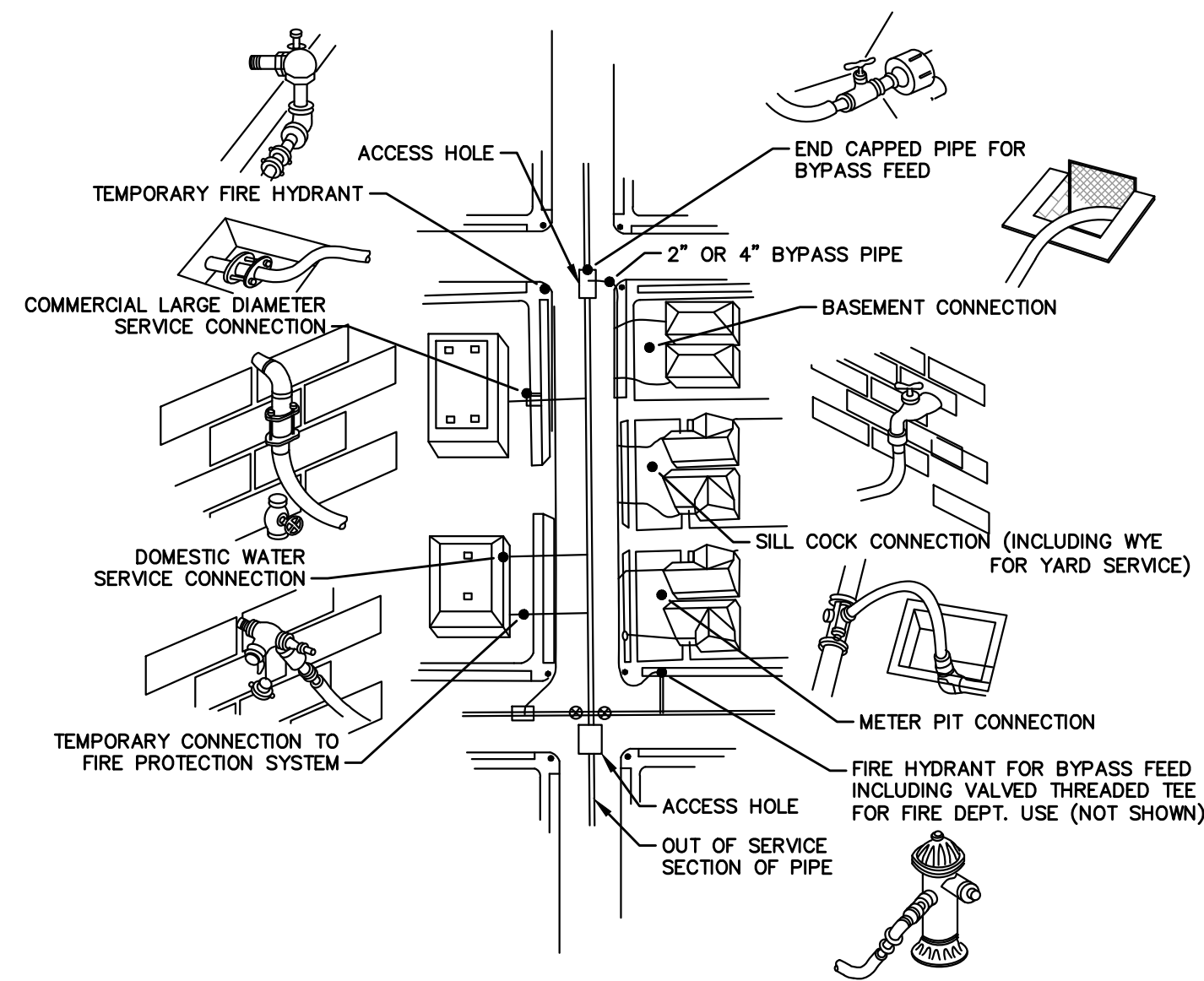
SUBCONSULTANT	SCALE	TITLE
	NONE	TOWN OF WAREHAM, MASSACHUSETTS EMERGENCY SEWER REPAIR CONSTRUCTION DETAILS - 2

UNLESS OTHERWISE NOTED OR CHANGED BY REPRODUCTION

TITLE

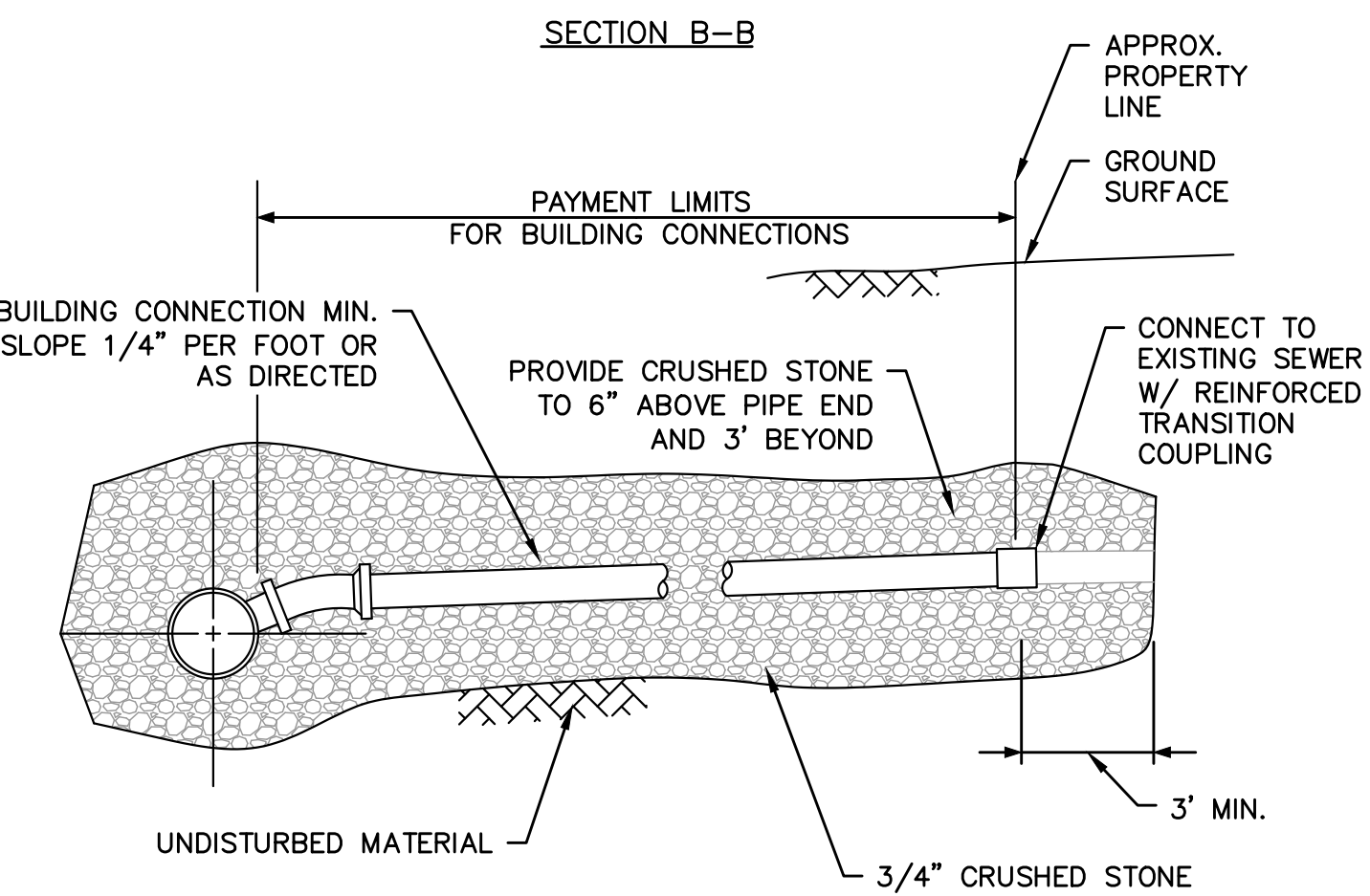
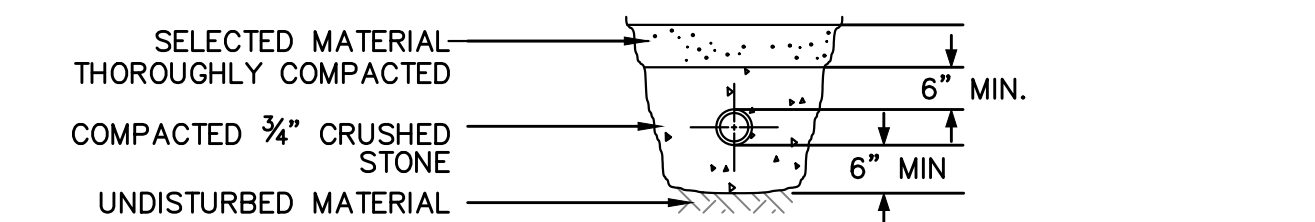
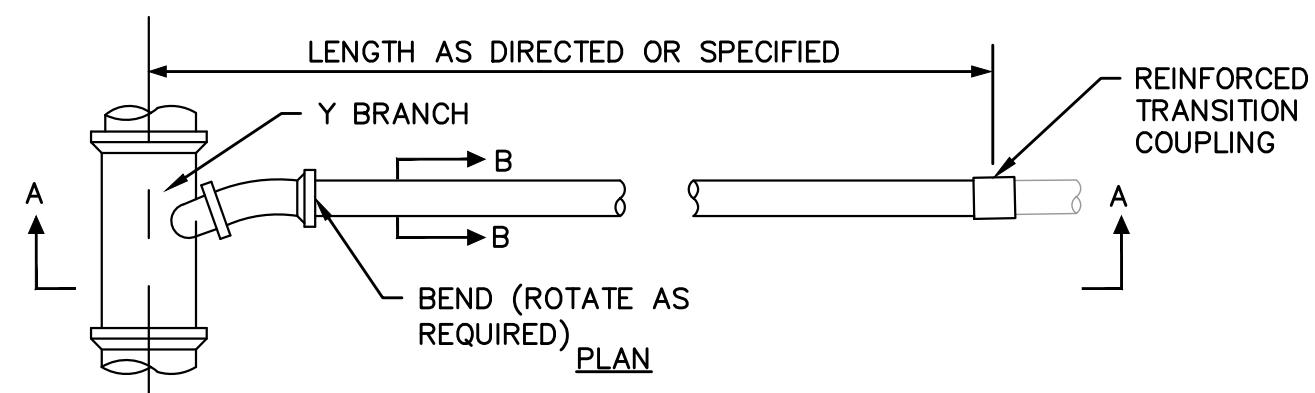
TOWN OF WAREHAM, MASSACHUSETTS
EMERGENCY SEWER REPAIR
CONSTRUCTION DETAILS - 2

BETA JOB NO.	10914
ISSUE DATE	MAY 2023
SHEET NO.	CD-2

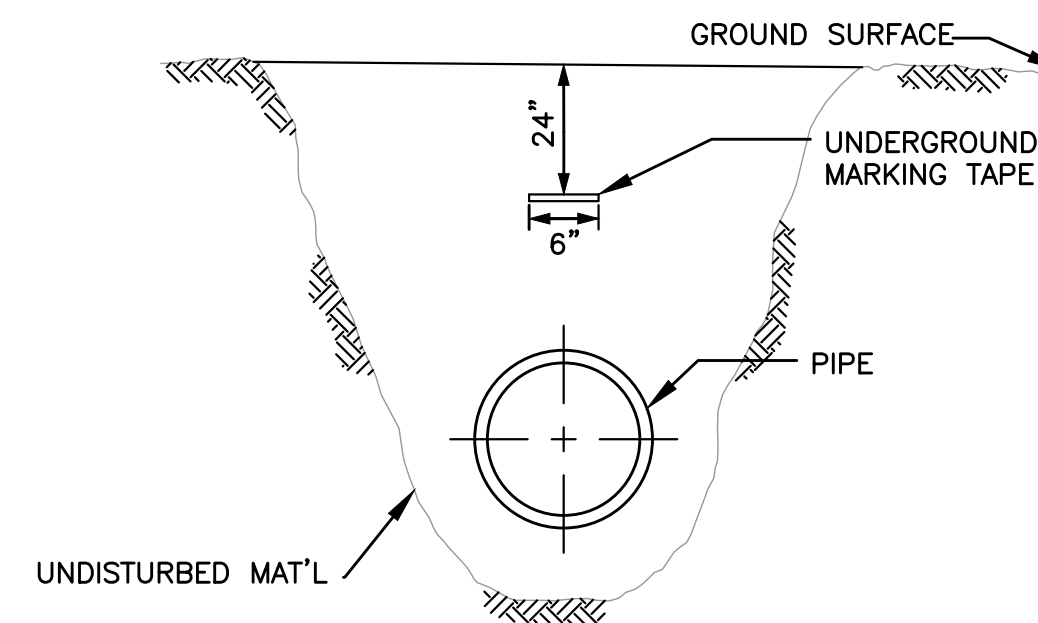


NOTES:
1. IN LINE VALVES REQUIRED ON BOTH SIDES OF THE STREET CROSSING CONNECTIONS AND A MINIMUM OF EVERY 400 FEET ON LINE.

BYPASS PIPING DETAILS
NOT TO SCALE

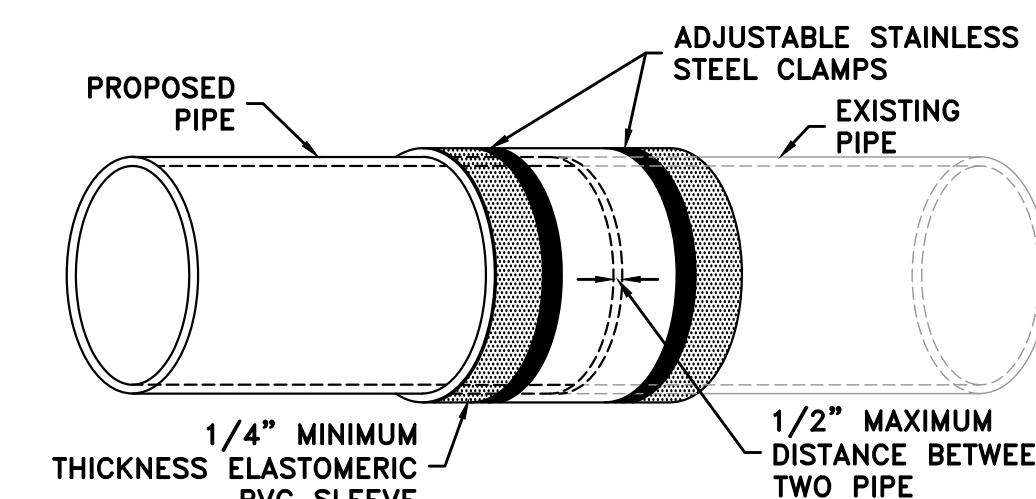


GRAVITY SEWER SERVICE
NOT TO SCALE



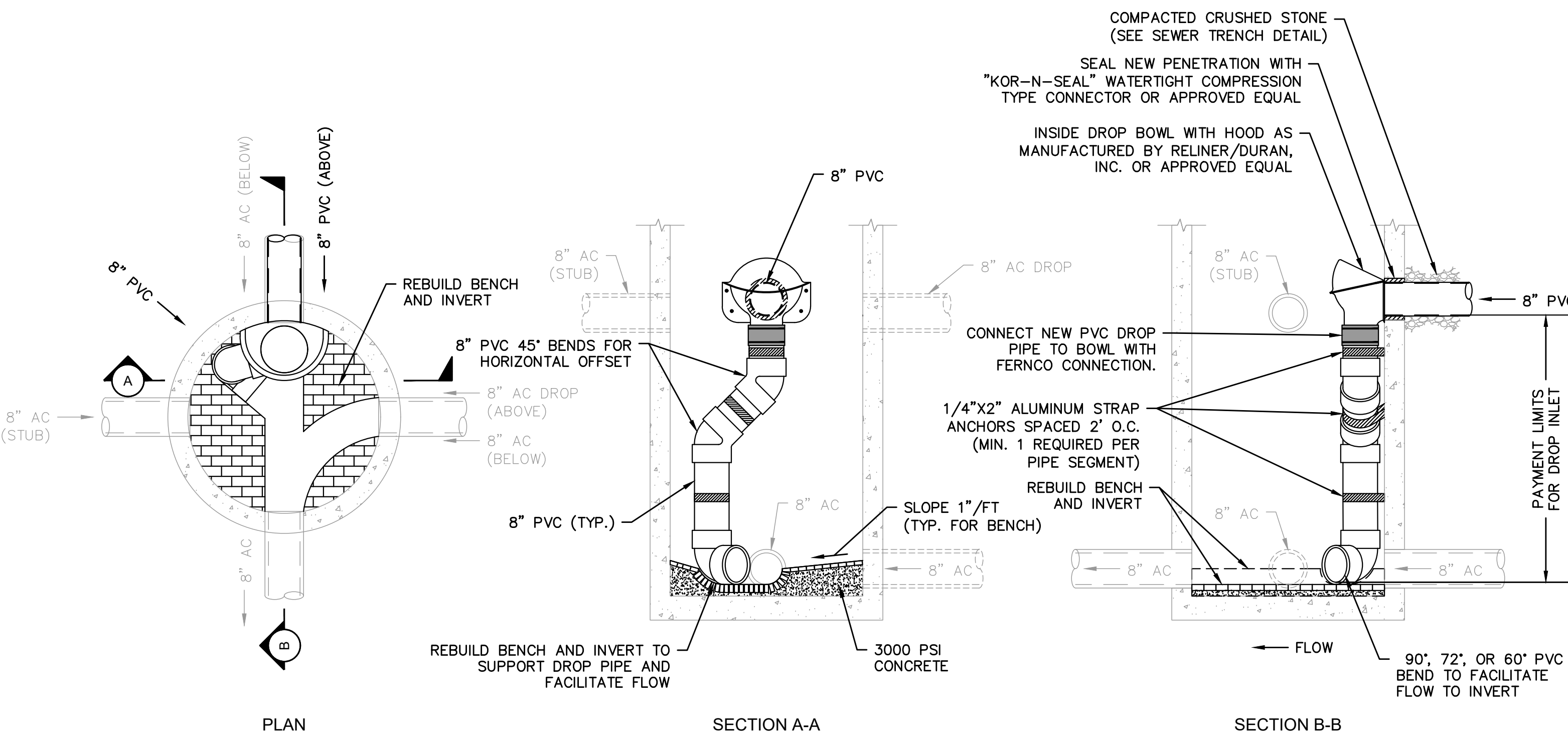
NOTES:
1. MARKING TAPE TO BE INSTALLED OVER ALL PIPELINES AND CONDUITS INSTALLED UNDER THIS CONTRACT.
2. MARKING TAPE FOR NON-FERROUS PIPE OR CONDUITS TO BE DETECTABLE, MAGNETIC TYPE.
3. MARKING TAPE FOR FERROUS PIPE OR CONDUITS TO BE NON-DETECTABLE, NON-MAGNETIC TYPE.
4. MARKING TAPE IS TO BE 6-INCHES WIDE AND INSTALLED DIRECTLY ABOVE THE PIPE OR CONDUIT APPROXIMATELY 24-INCHES BELOW THE PROPOSED FINISHED GRADE.

UNDERGROUND UTILITY MARKING TAPE DETAIL
NOT TO SCALE

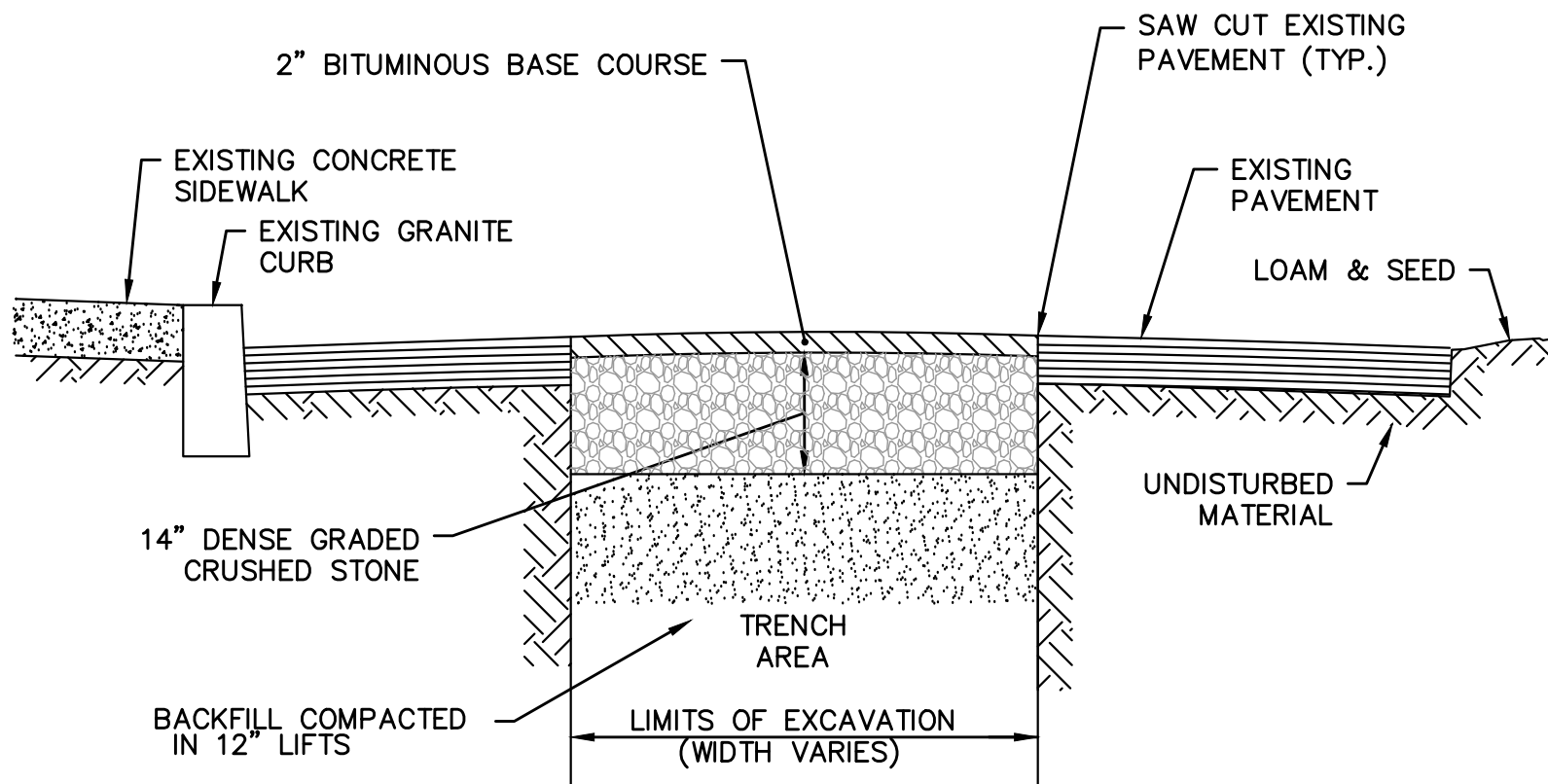


NOTES:
1. THE PROPOSED PIPE MAY HAVE AN OUTSIDE DIAMETER (O.D.) THAT IS DIFFERENT THAN THE O.D. OF THE EXISTING PIPE. THE CONTRACTOR SHALL VERIFY THE O.D. PRIOR TO ORDERING THE COUPLING.
2. COUPLING SHALL BE SHIELDED REPAIR COUPLING - FERNCO STRONGBACK RC SERIES WITH STAINLESS STEEL MOLDED BUSHING AND HARDWARE, SIZED TO SUIT OR EQUAL

REINFORCED TRANSITION COUPLING CONNECTION
NOT TO SCALE

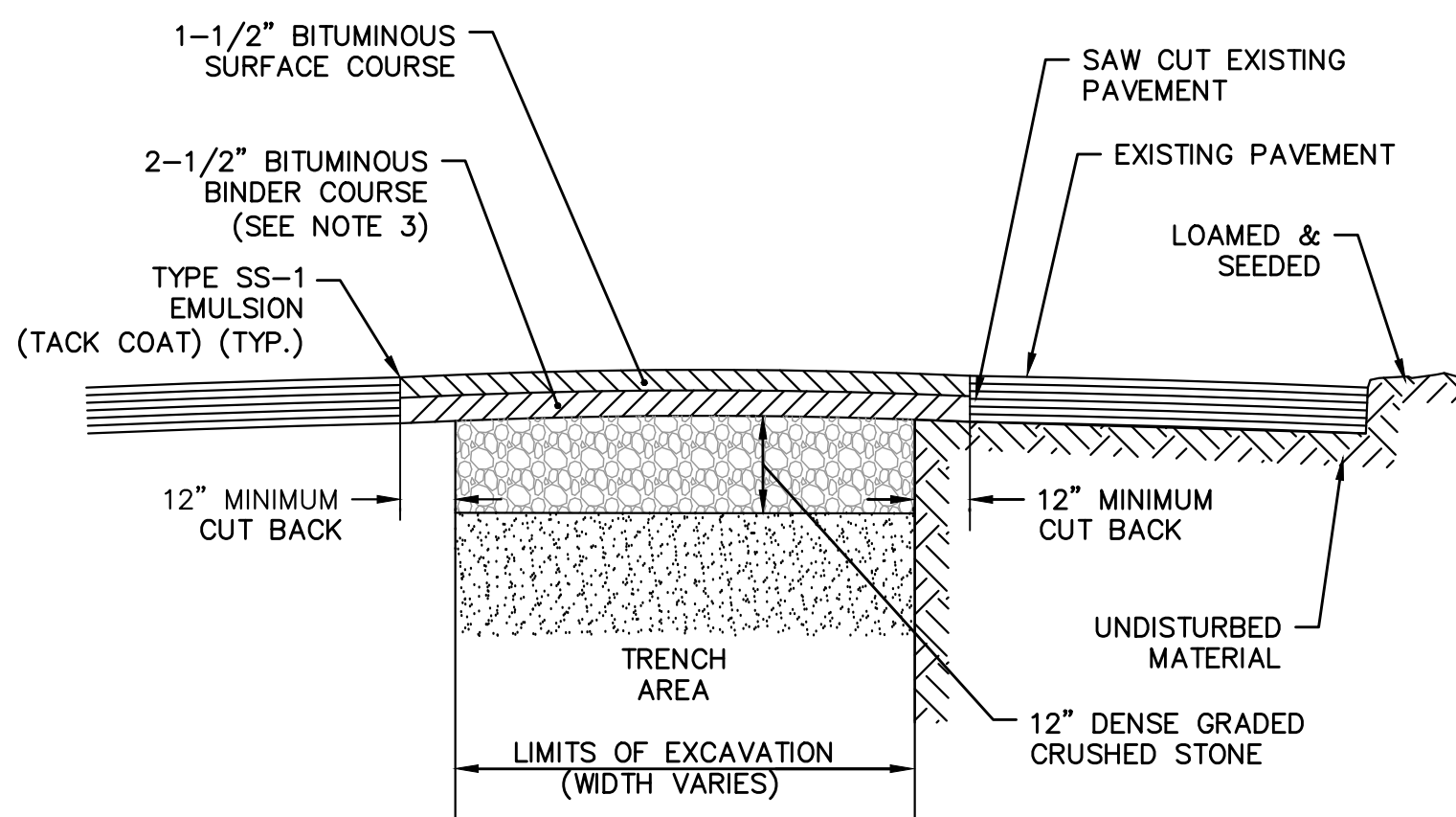


SEWER MANHOLE INSIDE DROP CONNECTION (MH 1402)
NOT TO SCALE



NOTE:
CONTRACTOR TO VARY PAVEMENT THICKNESS TO MAINTAIN A MINIMUM CROSS SECTIONAL SLOPE EQUALING 0.02 FT/FT OR %.

TEMPORARY BITUMINOUS CONCRETE TRENCH WIDTH PAVEMENT
NOT TO SCALE



NOTES:
1. MINIMUM PAVEMENT THICKNESS TO BE 1-1/2 INCH. MAXIMUM PAVEMENT THICKNESS PER COURSE NOT TO EXCEED 3 INCHES.
2. CONTRACTOR TO VARY PAVEMENT THICKNESS TO MAINTAIN A MINIMUM CROSS SECTIONAL SLOPE EQUALING 0.02 FT/FT OR %.
3. CONTRACTOR SHALL MATCH EXISTING PAVEMENT THICKNESS OR PROVIDE A (MIN.) OF 2-1/2\"/>

TRENCH WIDTH PAVEMENT BASE AND SURFACE COURSE
NOT TO SCALE

5/16/2023 3:25 PM J:\23_10914 - WAREHAM SWIFTS BEACH EMERGENCY REPAIRS\AUTOCAD\PLAN SET\DETAILS.DWG

NUMBER	DATE	MADE BY	CHECKED BY	REVISIONS

DRAWN BY:
CM
DESIGNED BY:
RG
CHECKED BY:
RD

REGISTERED PROFESSIONAL
ROBERT A. DRANE
CIVIL
No. 41842
5/24/23



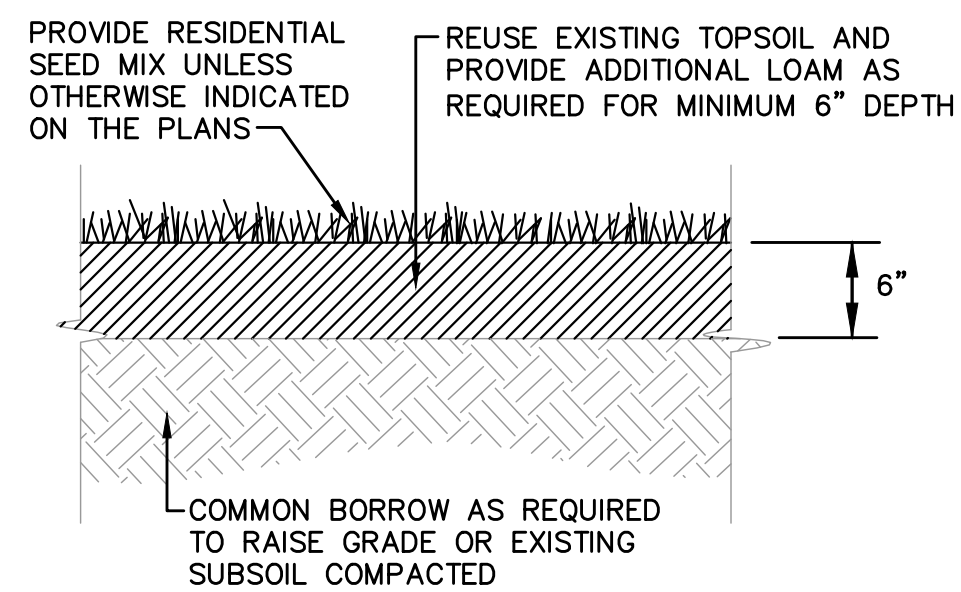
PREPARED BY
SUBCONSULTANT

SCALE
NONE

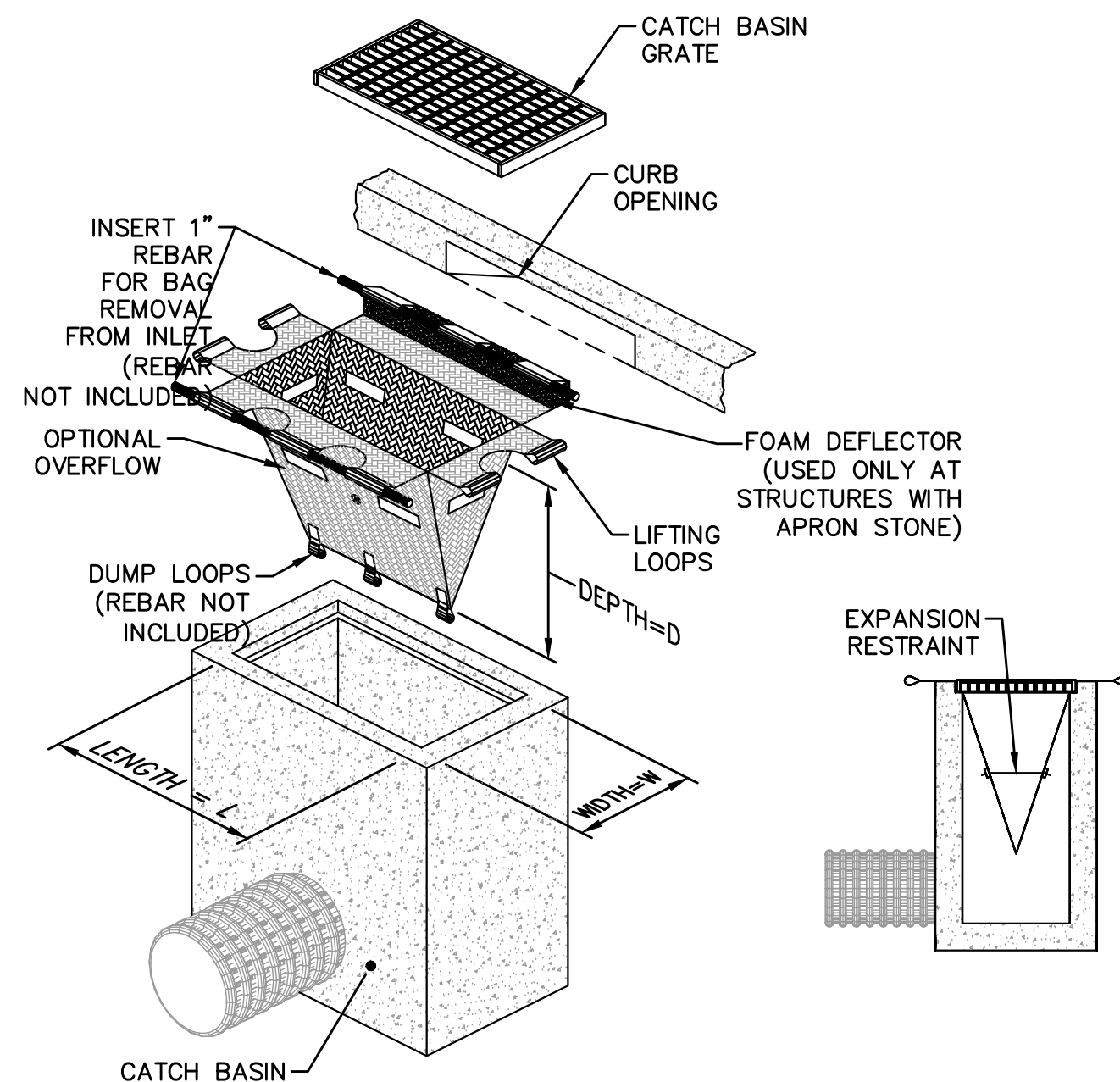
TITLE
**TOWN OF WAREHAM, MASSACHUSETTS
EMERGENCY SEWER REPAIR
CONSTRUCTION DETAILS - 3**

BETA JOB NO. 10914
ISSUE DATE MAY 2023
SHEET NO. CD-3

UNLESS OTHERWISE NOTED OR CHANGED BY REPRODUCTION

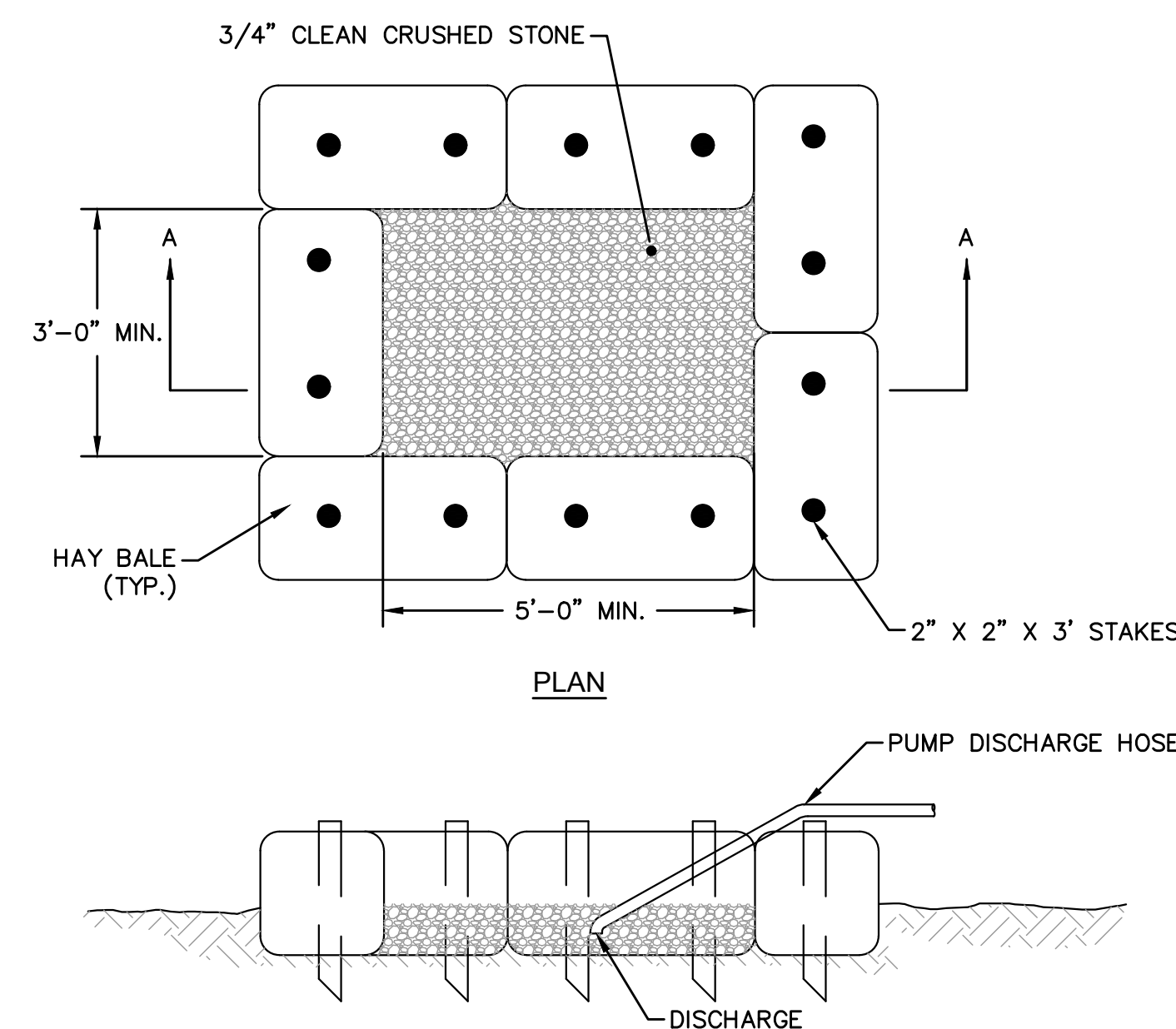


GROUND COVER DETAIL
NOT TO SCALE



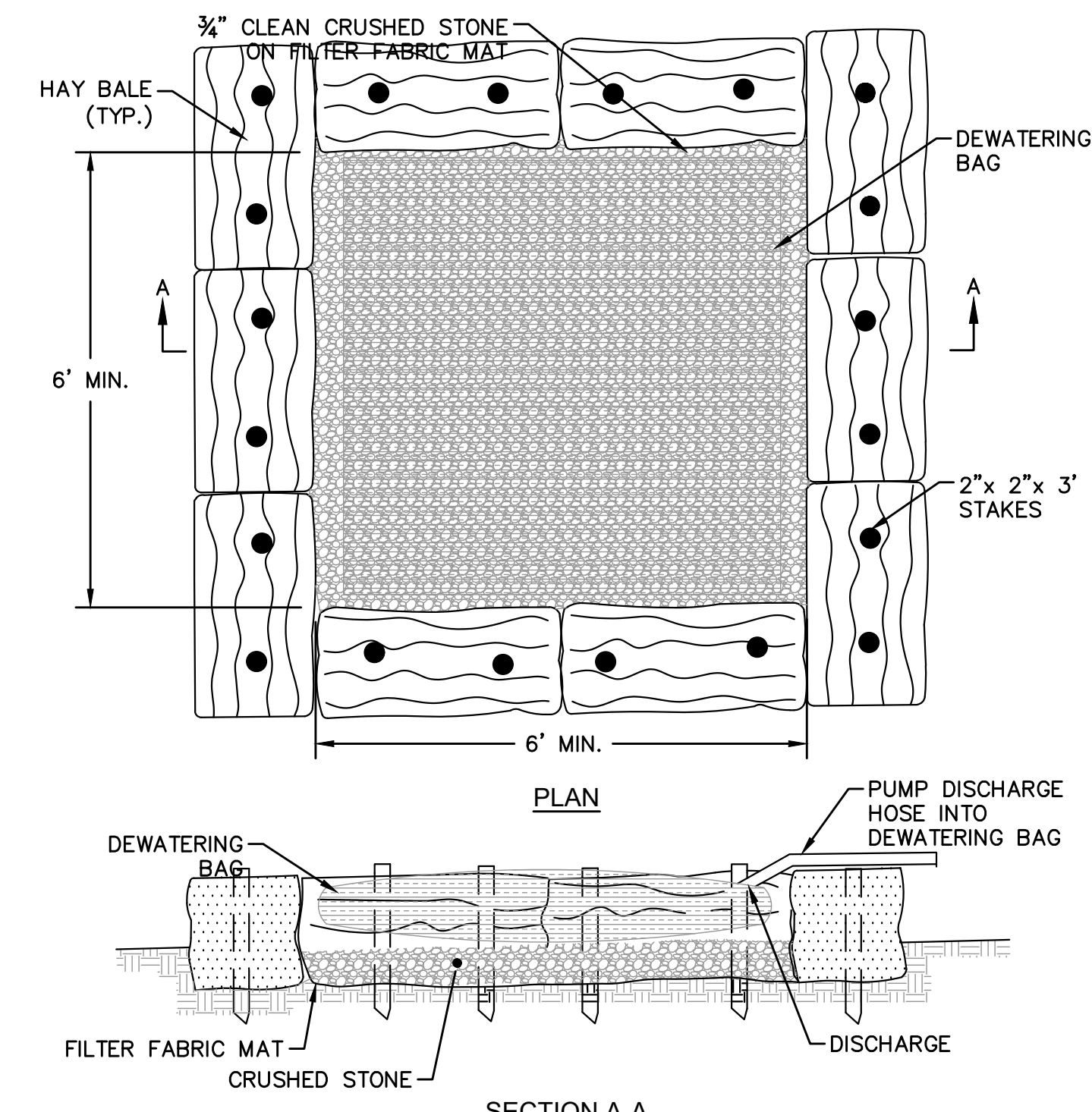
- NOTES:**
1. CONTRACTOR SHALL MAINTAIN ALL SILT SACK SEDIMENT CONTROL DEVICE INSTALLATIONS AND REPLACE WHEN SATURATED WITH SEDIMENT BASED ON MANUFACTURER RECOMMENDATIONS. SILT SACK SHALL BE INSPECTED AFTER EVERY RAIN EVENT BUT NO LONGER THAN EVERY TWO WEEKS.
 2. SILT SACK SHALL BE DOUBLE NEEDLE SEWN POLYPROPYLENE GEOTEXTILE FABRIC AND RATED FOR HIGH FLOW UNLESS OTHERWISE DIRECTED.
 3. CONTRACTOR SHALL PROVIDE CURB OPENING DEFLECTOR AT ALL CATCH BASINS AS NECESSARY.

INLET SEDIMENT CONTROL DEVICE (SILT SACK)
(WITH OPTIONAL CURB DEFLECTOR)
NOT TO SCALE



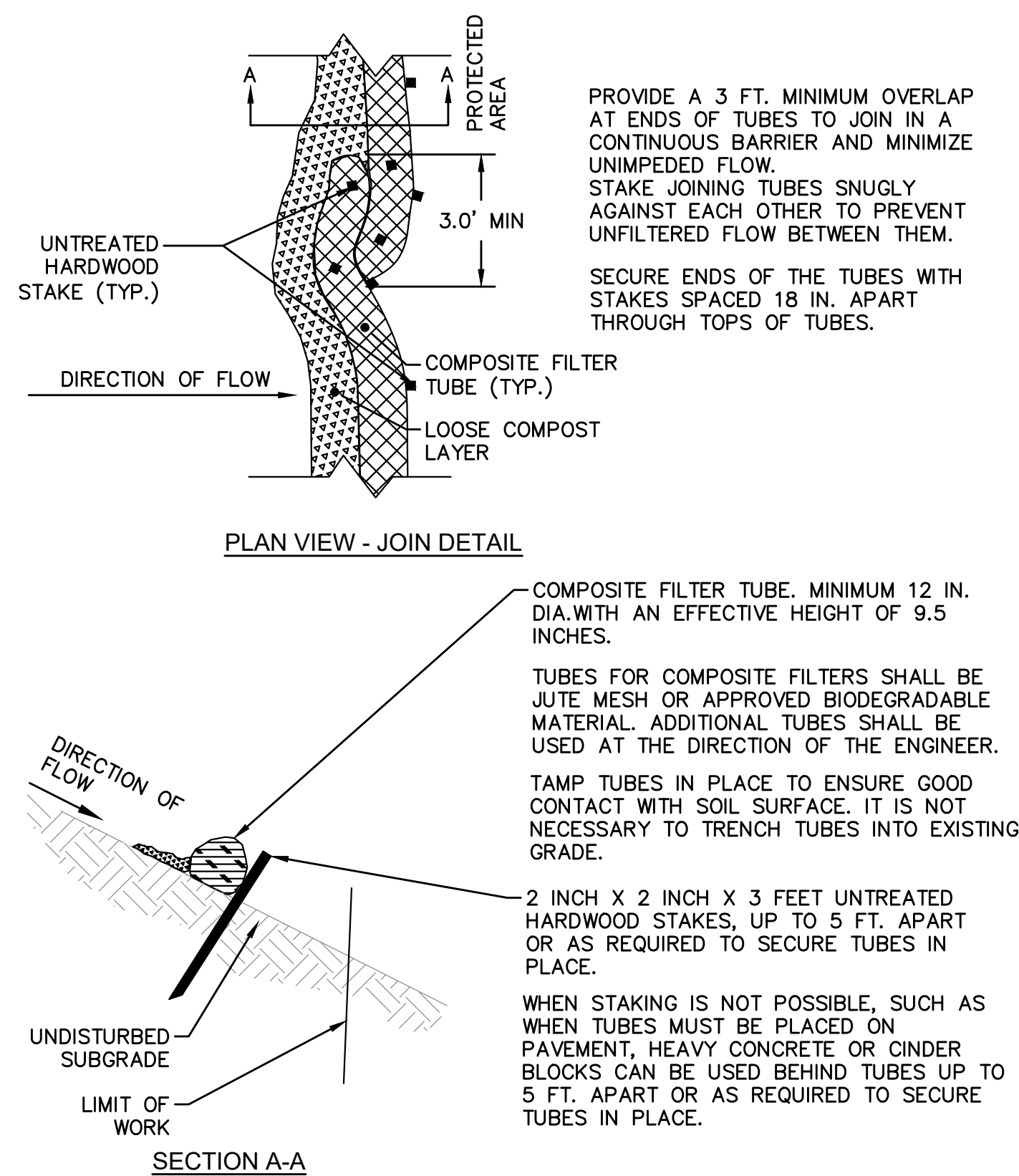
- NOTES:**
1. ALL DEWATERING DISCHARGES SHALL BE THROUGH SEDIMENT CONTROL TRAPS, CONTRACTOR SHALL MAINTAIN AND CLEAN TRAP AS REQUIRED.

SEDIMENT CONTROL TRAP
NOT TO SCALE

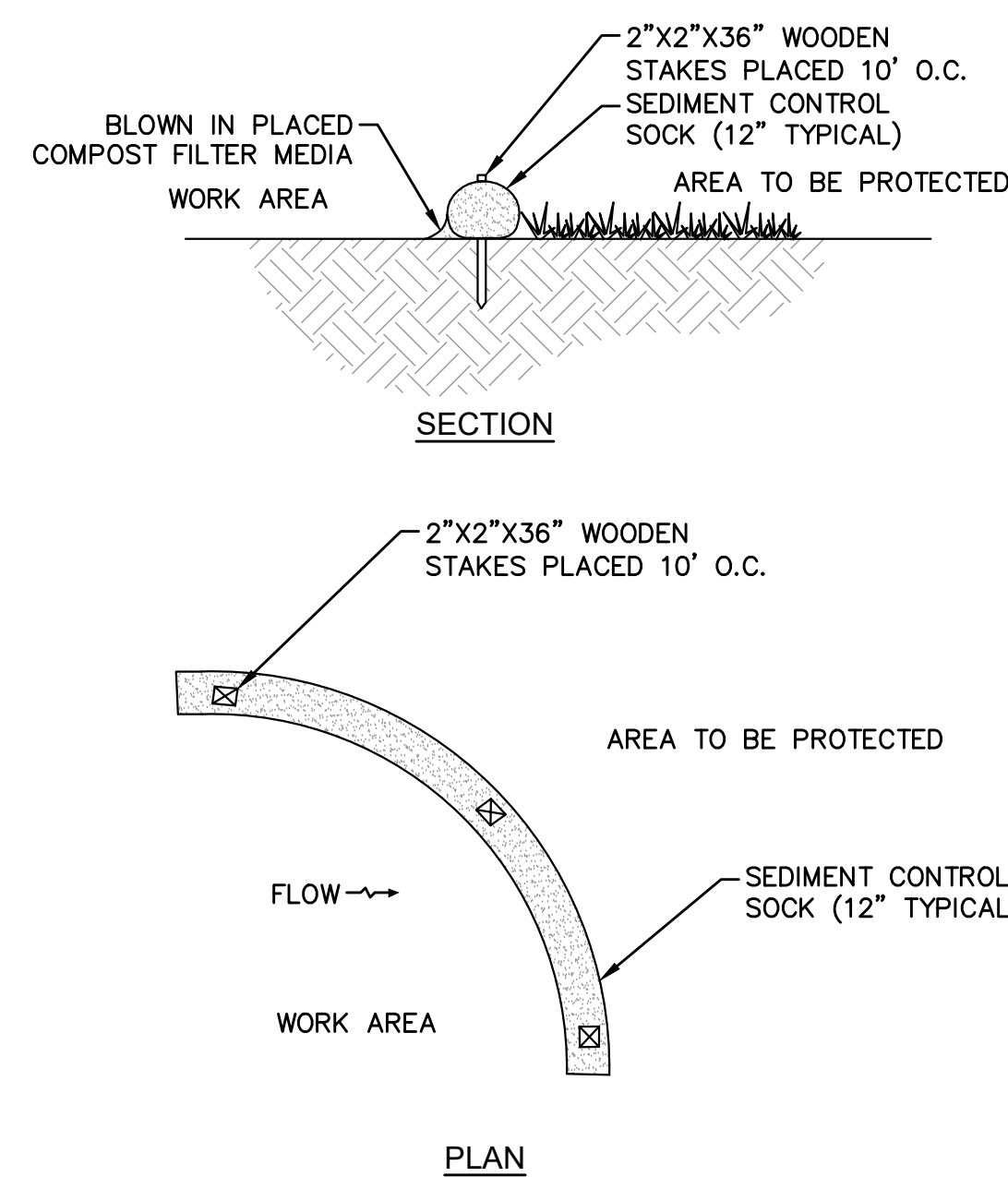


- NOTES:**
1. ALL DEWATERING DISCHARGES SHALL BE THROUGH DEWATERING BAG, CONTRACTOR SHALL MAINTAIN AND CLEAN AS REQUIRED.
 2. CONTRACTOR SHALL SUBMIT DEWATERING PLANS TO THE ENGINEER/OWNER FOR APPROVAL.
 3. SIZING OF DEWATERING BAG SHALL BE BASED ON BUT NOT LIMITED TO THE FOLLOWING:
 - 3a. PUMP FLOW RATE
 - 3b. QUALITY AND TYPE OF SEDIMENT
 - 3c. VOLUME OF MATERIALS NEEDING CONTAINMENT

SEDIMENT CONTROL TRAP WITH DEWATERING BAG
NOT TO SCALE

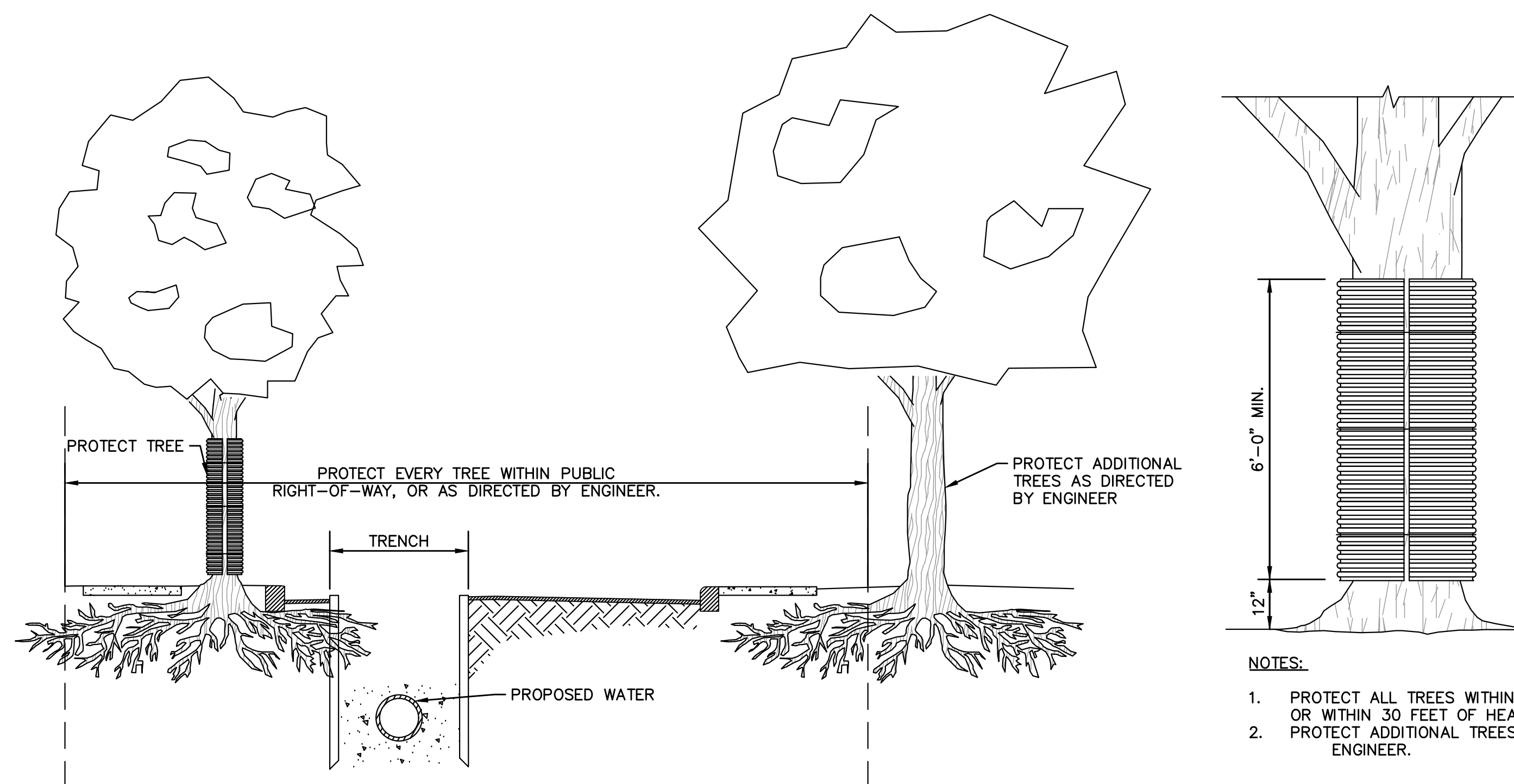


COMPOST FILTER TUBE - FOR EROSION CONTROL
NOT TO SCALE



- NOTES:**
1. SOCKS SHALL BE PLACED IN A ROW WITH ENDS OVERLAPPING THE ADJACENT SOCK.
 2. SOCKS SHALL BE SECURELY ANCHORED IN PLACE BY STAKES DRIVEN THROUGH THE SOCKS.
 3. INSPECTION SHALL BE FREQUENT AND REPAIR OR REPLACEMENT SHALL BE MADE PROMPTLY AS NEEDED.
 4. SOCKS SHALL BE REMOVED WHEN WORK IS COMPLETE AND THE AREA HAS STABILIZED.

SEDIMENT CONTROL "COMPOST SOCK"
NOT TO SCALE



TREE PROTECTION
NOT TO SCALE

5/15/2023 2:33 PM - J123.10914 - WAREHAM SWIFTS BEACH EMERGENCY REPAIRS/AUTOCAD/PLAN SET/DETAILS.DWG

NUMBER	DATE	MADE BY	CHECKED BY	REVISIONS

DRAWN BY:	CM
DESIGNED BY:	RG
CHECKED BY:	RD

REGISTERED PROFESSIONAL

 PREPARED BY

 5/24/23

PREPARED BY

 www.BETA-inc.com

SUBCONSULTANT	SCALE	TITLE
	NONE	TOWN OF WAREHAM, MASSACHUSETTS EMERGENCY SEWER REPAIR CONSTRUCTION DETAILS - 4

UNLESS OTHERWISE NOTED OR CHANGED BY REPRODUCTION

BETA JOB NO.	10914
ISSUE DATE	MAY 2023
SHEET NO.	CD-4