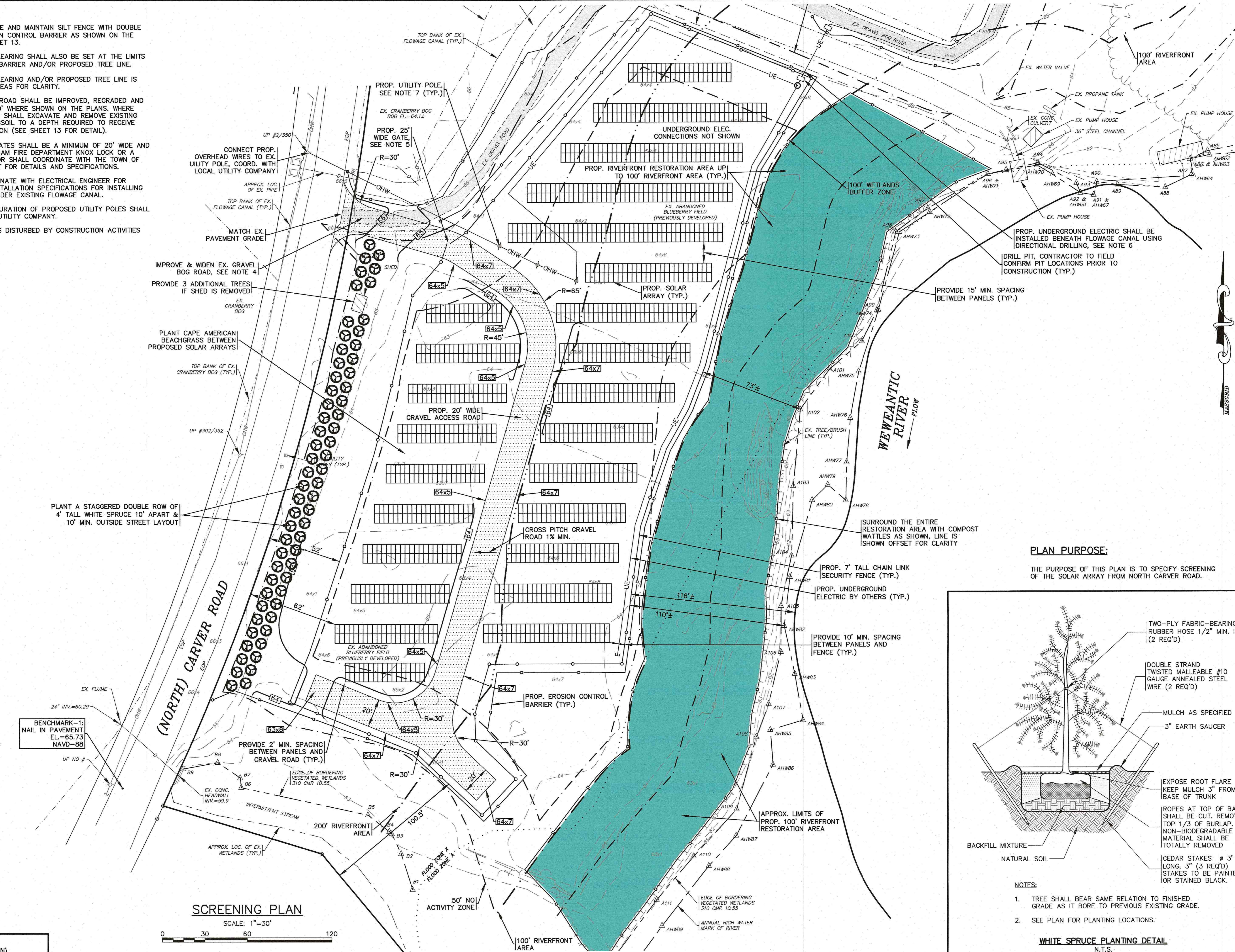


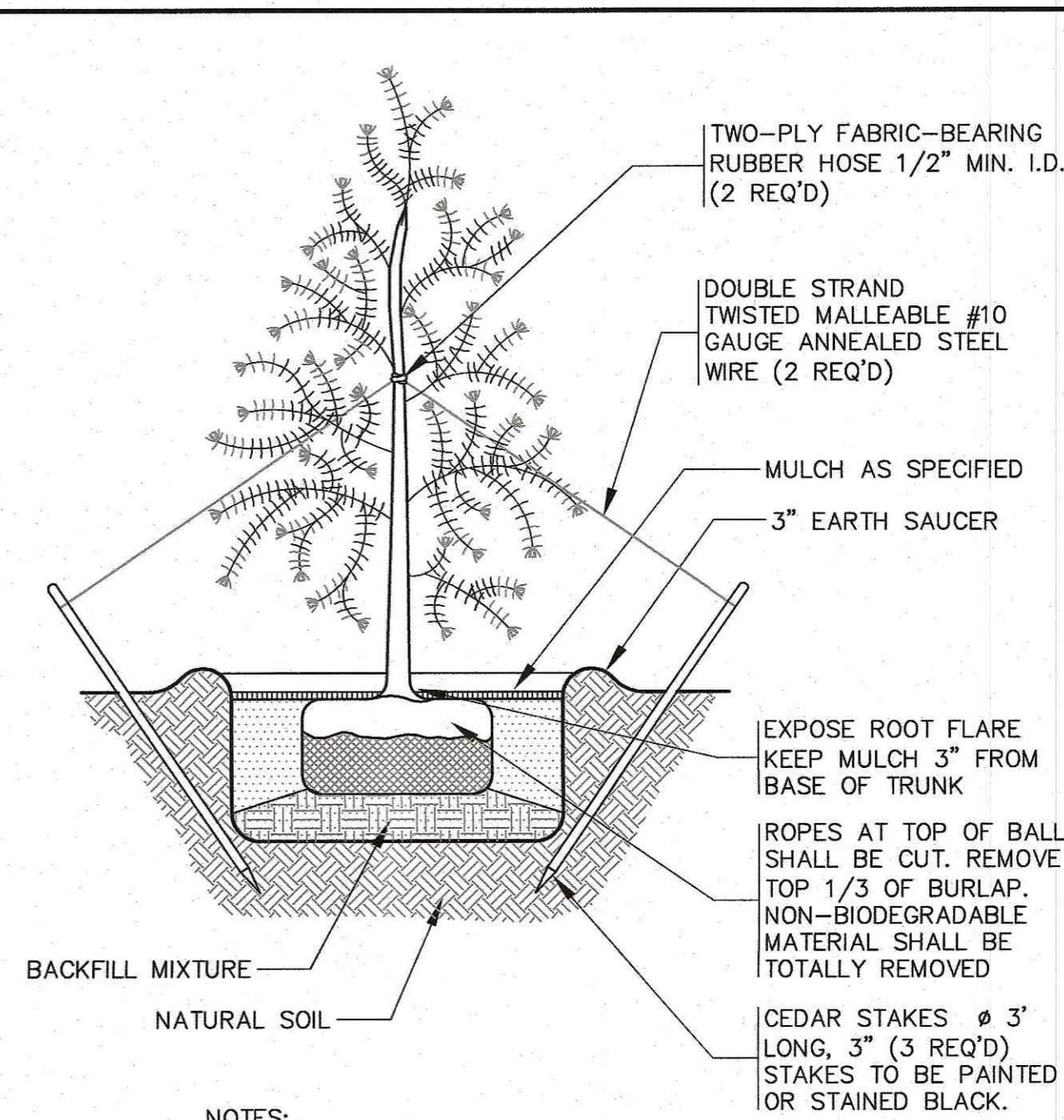
NOTES:

- CONTRACTOR SHALL PROVIDE AND MAINTAIN SILT FENCE WITH DOUBLE STAKED HAY BALES EROSION CONTROL BARRIER AS SHOWN ON THE PLANS. SEE DETAIL ON SHEET 13.
- THE LIMIT OF WORK AND CLEARING SHALL ALSO BE SET AT THE LIMITS OF THE EROSION CONTROL BARRIER AND/OR PROPOSED TREE LINE.
- THE LIMIT OF WORK AND CLEARING AND/OR PROPOSED TREE LINE IS SHOWN OFFSET IN SOME AREAS FOR CLARITY.
- THE EXISTING GRAVEL BOG ROAD SHALL BE IMPROVED, REGRADED AND WIDENED TO A WIDTH OF 20' WHERE SHOWN ON THE PLANS. WHERE REQUIRED THE CONTRACTOR SHALL EXCAVATE AND REMOVE EXISTING GRAVEL, TOP SOIL AND SUBSOIL TO A DEPTH REQUIRED TO RECEIVE GRAVEL ROAD CROSS SECTION (SEE SHEET 13 FOR DETAIL).
- ALL PROPOSED SECURITY GATES SHALL BE A MINIMUM OF 20' WIDE AND BE SECURED WITH A WAREHAM FIRE DEPARTMENT KNOX LOCK OR A KNOX KEY BOX. CONTRACTOR SHALL COORDINATE WITH THE TOWN OF WAREHAM FIRE DEPARTMENT FOR DETAILS AND SPECIFICATIONS.
- CONTRACTOR SHALL COORDINATE WITH ELECTRICAL ENGINEER FOR COMPLETE DETAILS AND INSTALLATION SPECIFICATIONS FOR INSTALLING UNDERGROUND ELECTRIC UNDER EXISTING FLOWAGE CANAL.
- FINAL LOCATIONS & CONFIGURATION OF PROPOSED UTILITY POLES SHALL BE DETERMINED BY LOCAL UTILITY COMPANY.
- LOAM AND SEED ALL AREAS DISTURBED BY CONSTRUCTION ACTIVITIES UNLESS OTHERWISE NOTED.



PLAN PURPOSE:

THE PURPOSE OF THIS PLAN IS TO SPECIFY SCREENING OF THE SOLAR ARRAY FROM NORTH CARVER ROAD.



NOTES:

- TREE SHALL BEAR SAME RELATION TO FINISHED GRADE AS IT BORE TO PREVIOUS EXISTING GRADE.
- SEE PLAN FOR PLANTING LOCATIONS.

WHITE SPRUCE PLANTING DETAIL
N.T.S.

PERMIT SET
(NOT FOR CONSTRUCTION)

H:\GAF DRAWINGS\2020 DRAWINGS\20-9568 (LSE HYDRA, LLC)\9568.dwg; 9568 SITE PLAN_A1-2-REV-2.dwg

DATE: FEB. 22, 2022	APPROVED BY:	<p>G.A.F. ENGINEERING, INC. PROFESSIONAL ENGINEERS & LAND SURVEYORS 286 MAIN STREET - WAREHAM, MA 02571 TEL: (508) 295-6600 FAX: (508) 295-6634 E-MAIL: info@gafengrinc.com</p> <p>SOUTHERN ARRAY SCREENING PLAN</p> <p>WAREHAM, MA</p> <p>PREPARED FOR: LSE HYDRA, LLC 40 TOWER LANE, SUITE 201 AVON, CT</p>		
DRAWN BY: JMP	APPROVED BY:			
CHECKED BY: RJR	APPROVED BY:			
JOB NO.: 20-9568	APPROVED BY:			
SCALE: 1" = 30'	DATE	BY	APP'D	DESCRIPTION