

**SITE PLAN**  
SCALE: 1" = 20'

**MAIN STREET**

**NOTES:**

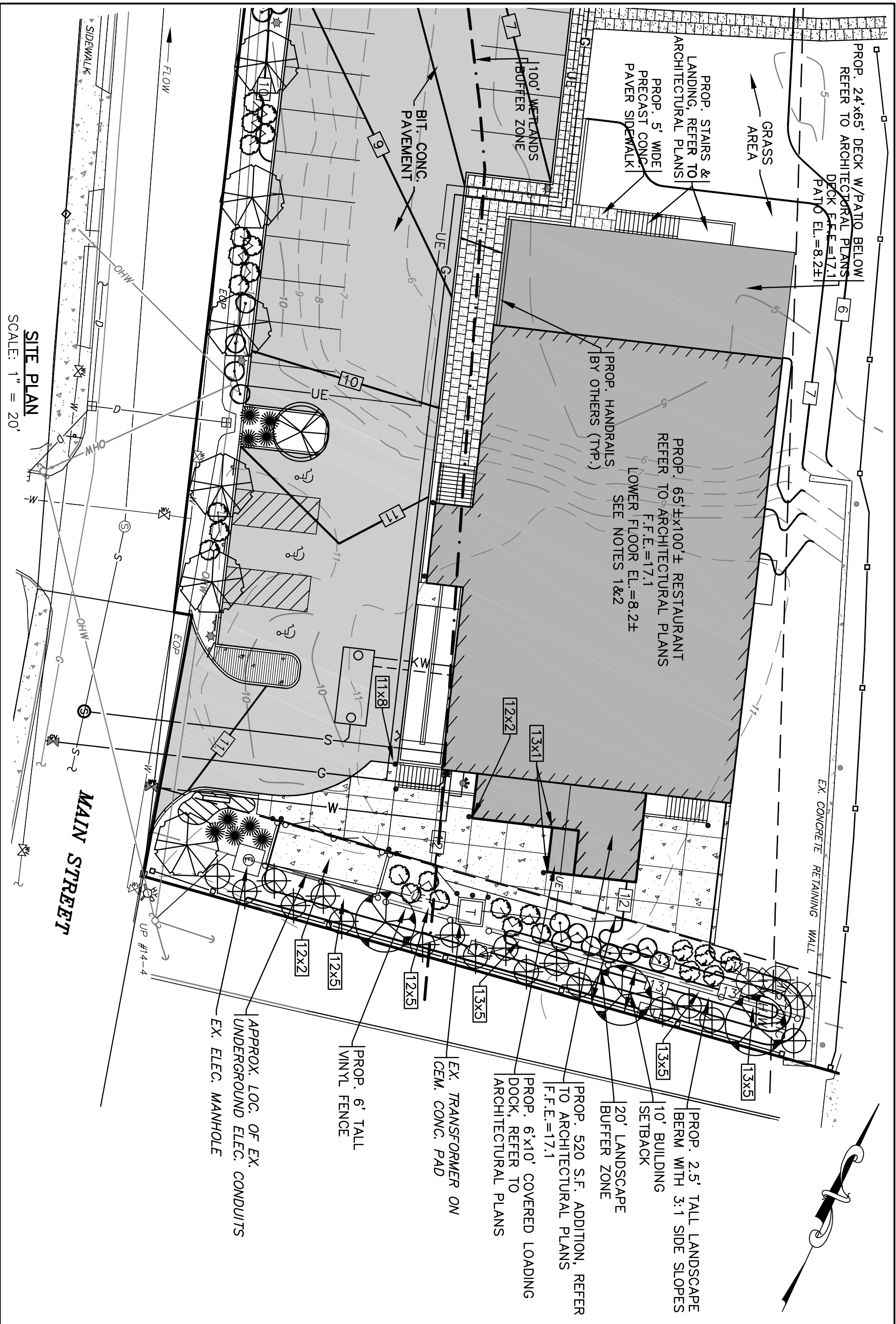
- PROPOSED BUILDING COVERAGE=18.8%
- PROPOSED IMPERVIOUS SURFACE=64.6%
- PROP. UPLIFT SIGN SHALL MEET ALL REQUIREMENTS OF SECTION 11 OF THE TOWN OF WAREHAM ZONING BYLAW SIGN SHALL NOT EXCEED 100 S.F.
- APPROX. LOC. OF EX. UNDERGROUND ELEC. CONDUITS
- EX. ELEC. MANHOLE
- PROP. TRANSFORMER ON CEM. CONC. PAD
- PROP. CEM. CONC. LOADING AREA, SEE CEM. CONC. LOADING AREA PAD DETAIL
- PROP. LANDING & STAIRS, REFER TO ARCHITECTURAL PLANS
- PROP. 10'x25' CEM. CONC. DUMPSTER PAD W/6' TALL VINYL FENCE ENCL., PROVIDE (2) 10' GATES AS SHOWN
- PROP. 6' TALL VINYL FENCE
- PROP. EROSION CONTROL BARRIER & LIMITS OF WORK
- PROP. LANDSCAPE AREA
- 10' BUILDING SETBACK
- 20' LANDSCAPE BUFFER ZONE
- PROP. 520 S.F. ADDITION, REFER TO ARCHITECTURAL PLANS F.F.E.=17.1
- PROP. 6'x10' COVERED LOADING DOCK, REFER TO ARCHITECTURAL PLANS

**SKETCH PLAN SHOWING SITE PLAN MODIFICATIONS**  
59 MAIN STREET WAREHAM, MA  
PREPARED FOR:  
**WARREN QOZB, LLC**  
P.O. BOX 1206 CARVER, MA

**G.A.F. ENGINEERING, INC.**  
PROFESSIONAL ENGINEERS & LAND SURVEYORS  
266 MAIN STREET - WAREHAM, MA 02571  
TEL: (508) 295-6600 FAX: (508) 295-6634  
E-MAIL: info@gafenginc.com  
COPYRIGHT © 2023 G.A.F. ENGINEERING, INC. NO PART OF THIS DOCUMENT MAY BE REPRODUCED, STORED, OR TRANSMITTED BY ANY MEANS, ELECTRONIC AND/OR MECHANICAL PHOTOCOPYING, WHATSOEVER, WITHOUT THE EXPRESS WRITTEN CONSENT OF G.A.F. ENGINEERING, INC. WITH THE EXCEPTION OF ANY REGULATORY AUTHORITY WHICH MAY REPRODUCE IT IN CONJUNCTION WITH THE PERFORMANCE OF OFFICIAL BUSINESS UNDER ITS JURISDICTION. ANY MODIFICATIONS MADE TO THIS DOCUMENT WITHOUT THE EXPRESS WRITTEN CONSENT OF G.A.F. ENGINEERING, INC. SHALL RENDER IT UNUSABLE.

REV.	DATE	BY	APP'D	DESCRIPTION
1	1/19/23	JMP	WFM	ADD. FOOTPRINT/LOADING DOCK

DATE: **JAN. 5, 2023** JOB NO.: **20-9438**  
DRAWN BY: **JMP** SCALE: **1" = 20'**  
CHECKED BY: **WFM**



**SITE PLAN**  
SCALE: 1" = 20'

**MAIN STREET**

**SKETCH PLAN SHOWING  
SITE PLAN MODIFICATIONS**  
59 MAIN STREET WAREHAM, MA  
PREPARED FOR:  
**WARREN QOZB, LLC**  
P.O. BOX 1206 CARVER, MA

**G.A.F. ENGINEERING, INC.**  
PROFESSIONAL ENGINEERS & LAND SURVEYORS  
266 MAIN STREET - WAREHAM, MA 02571  
TEL: (508) 295-6600 FAX: (508) 295-6634  
E-MAIL: info@gafenginc.com  
COPYRIGHT © 2023 G.A.F. ENGINEERING, INC. NO PART OF THIS DOCUMENT MAY BE REPRODUCED, STORED, OR TRANSMITTED BY ANY MEANS, ELECTRONIC AND/OR MECHANICAL PHOTOCOPIING, WHATSOEVER, WITHOUT THE EXPRESS WRITTEN CONSENT OF G.A.F. ENGINEERING, INC. WITH THE EXCEPTION OF ANY REGULATORY AUTHORITY WHICH MAY REPRODUCE IT IN CONJUNCTION WITH THE PERFORMANCE OF OFFICIAL BUSINESS UNDER ITS JURISDICTION. ANY MODIFICATIONS MADE TO THIS DOCUMENT WITHOUT THE EXPRESS WRITTEN CONSENT OF G.A.F. ENGINEERING, INC. SHALL RENDER IT UNUSABLE.

1	1/19/23	JMP	WFM	ADDED THIS SHEET
REV.	DATE	BY	APP'D	DESCRIPTION
DATE: <b>JAN. 19, 2023</b>				JOB NO.: <b>20-9438</b>
DRAWN BY: <b>JMP</b>				SCALE: <b>1" = 20'</b>
CHECKED BY: <b>WFM</b>				